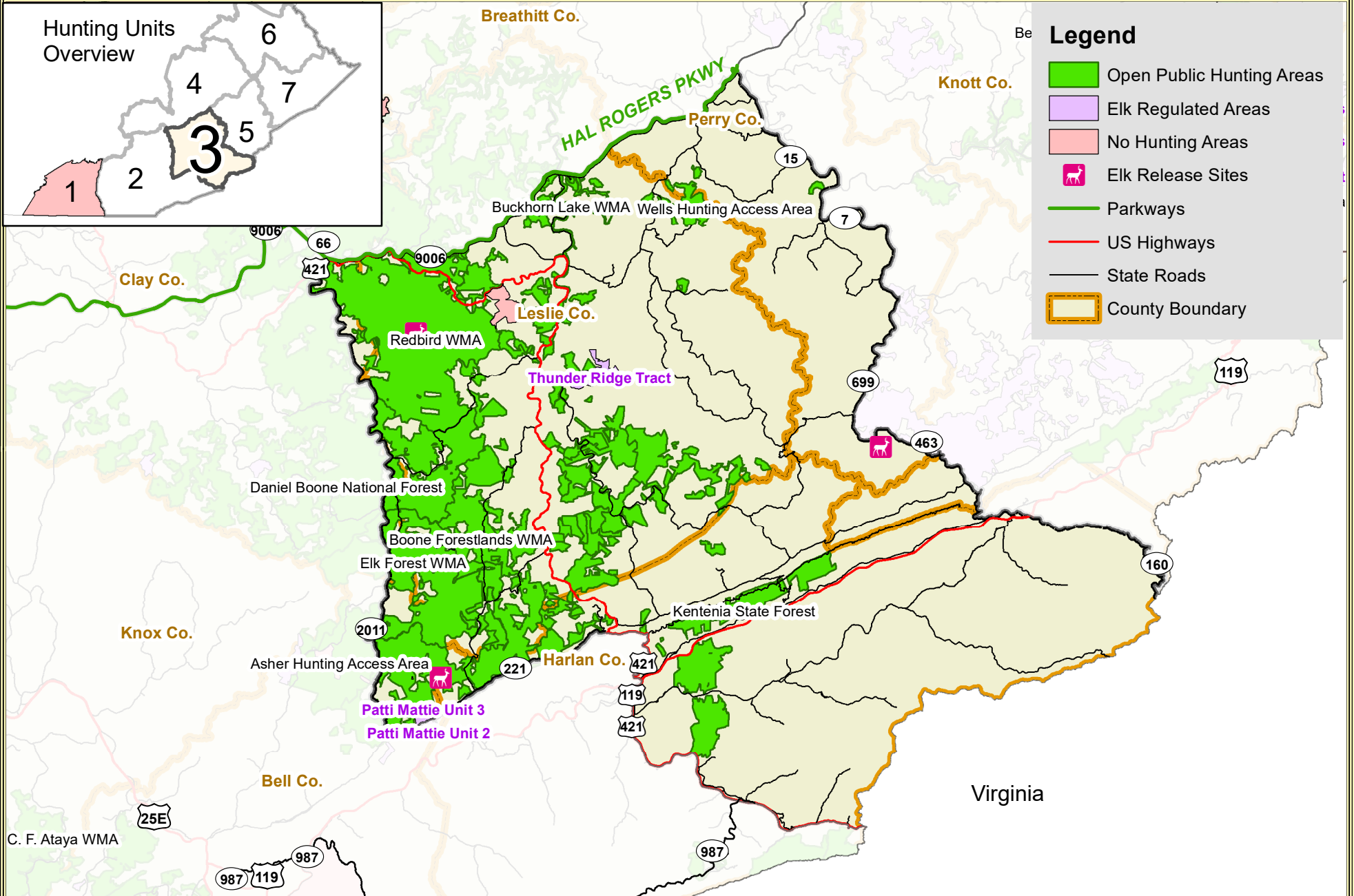
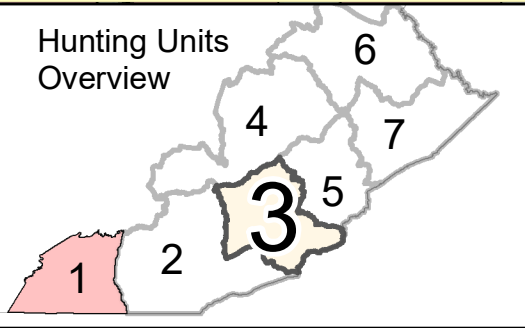


# Elk Hunting Unit 3

The following page describes the boundary roads.

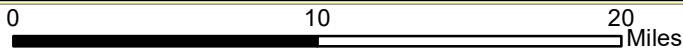


## Hunting Units Overview



## Legend

- Open Public Hunting Areas
- Elk Regulated Areas
- No Hunting Areas
- Elk Release Sites
- Parkways
- US Highways
- State Roads
- County Boundary



1:400,000

### **ELK HUNTING UNIT 3 BOUNDARY DESCRIPTION**

Including portions of Bell, Clay, Harlan, Leslie, Perry, and Letcher counties, the western boundary of unit 3 follows highway 421 from the Kentucky-Virginia border north to the intersection of highway 221; west along highway 221 to its intersection with highway 2011; north along highway 2011 to its intersection with highway 66; north on highway 66 to its intersection with 421 then east for less than a mile to Highway 66 to the intersection with the Hal Rodgers Parkway; east on the Hal Rodgers Parkway/Highway 80 to the intersection of highway 15; south along highway 15 to the intersection of highway 7; south along highway 7 to the intersection of highway 699; south along highway 699 to the intersection of highway 463; south along highway 463 to the intersection of highway 160; south along highway 160 to the Kentucky-Virginia border; south southwest along the Kentucky-Virginia border to highway 421 to complete the unit 3 boundary.

To view a more detailed maps of a specific Public Hunting Area or Regulated Area please visit the following links: [Public Hunting Areas](#) and [Regulated Areas](#)