

# 2016-2017 White-tailed Deer Report

Kentucky Department of Fish and Wildlife Resources



Photo courtesy of Joe Lacefield, KDFWR Private Lands Biologist



# Table of Contents

<b>Introduction</b> .....	<b>2</b>
<b>Population Status</b> .....	<b>3</b>
<b>2016-17 Harvest Results</b> .....	<b>3</b>
Weapon Type Harvest Summary .....	4
Monthly Harvest Results .....	5
Harvest Results by Permit Type .....	6
Boone & Crockett Entries.....	6
<b>Public Land Harvest</b> .....	<b>8</b>
<b>Quota Hunt Results</b> .....	<b>8</b>
Bluegrass Region Highlights .....	9
<b>Damage Issues</b> .....	<b>14</b>
<b>Disease Surveillance</b> .....	<b>15</b>
Hemorrhagic Disease (HD) .....	15
Chronic Wasting Disease (CWD) .....	15
Carcass Importation .....	16
<b>General Information about the 2016-17 Season</b> .....	<b>16</b>
Licenses and Permit Fees .....	16
Season Dates and Bag Limits.....	17
2016-17 Deer Hunting Zones .....	18
<b>Deer Permit Sales</b> .....	<b>19</b>
<b>Changes for the 2017-18 Deer Season</b> .....	<b>20</b>
<b>Contacts</b> .....	<b>23</b>



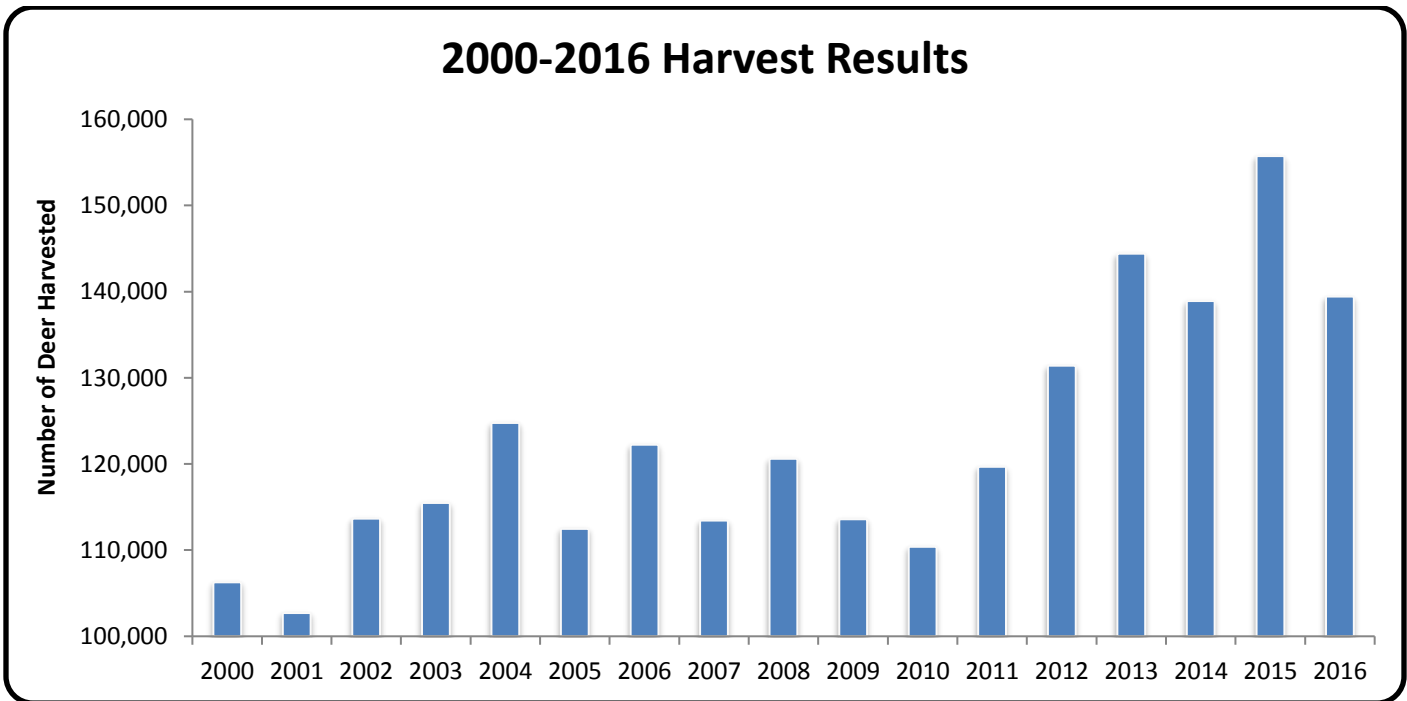
## Population Status

Deer management techniques have varied greatly across the state over the last decade. Parts of the state, such as the Bluegrass and Purchase regions, have seen liberalization to the bag limit in an attempt to lower the deer population. Areas in the Southeast and Green River regions have seen a reduction in bag limits to accommodate for declining deer densities. In 2007, the state experienced the most wide spread Epizootic Hemorrhagic Disease (EHD) outbreak on record. All regions of the state were impacted, with some seemingly affected worse than others. Following the 2007 outbreak, some counties were re-zoned to restrict female harvest to allow the population to rebound. Current county population estimates in the counties that had their zone changed have rebounded and are at population levels equal to or higher than levels prior to the outbreak. With the implementation of zone restrictions, KDFWR has been able to once again liberalize the bag limit in the counties that were impacted by EHD.

The overall herd estimate shows a stable to slightly increasing trend. The current statewide estimate is 858,876 deer statewide at the start of the 2017-18 hunting season, which is a 4% increase from 2016-17. This estimate is generated from harvest and age structure data, which is collected through telecheck and by KDFWR staff.

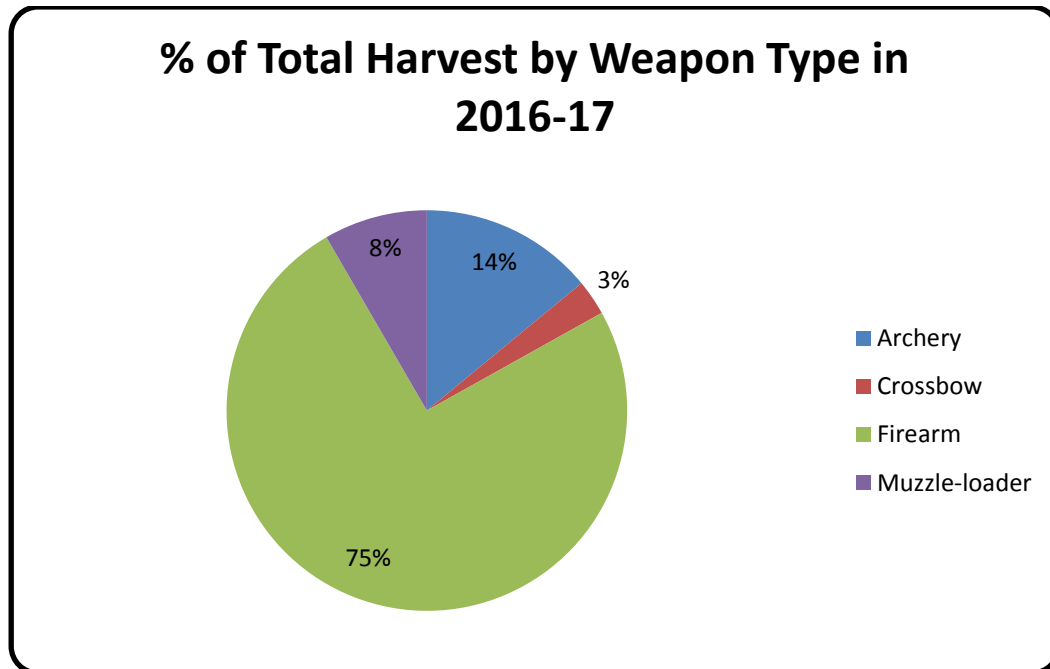
## 2016-2017 Harvest Results

139,429 deer were harvested during the 2016-17 deer season, which is the third highest harvest on record. Only the 2013-14 season (144,409) and the 2015-16 season (155,730) were higher. We observed a 12% decrease from the 2015-16 season (155,730) and a <1% increase from 2014-15 season (138,899). In years with lower acorn production, deer tend to travel more in search of food resulting in more deer sightings and higher harvest. The 2016-17 mast crop production was slightly above average and was an increase when compared to the 2015-16 mast production. The mast production from 2016-17 was contributing factor to the decrease in harvest from 2015-16 to 2016-17. In addition, there were optimal hunting weather conditions during the major hunting timeframes, which also contributed to the harvest.



## Weapon Type Harvest Summary

There were no significant changes in the percentage of the 2016-17 harvest by weapon type compared to last season, with the exception of the muzzleloader harvest (11,660), which decreased by 37.5%. The muzzleloader harvest decrease was most likely a result of several contributing factors, all of which may influence deer movements. These include: increased mast production, the “super moon effect” during the early and late muzzleloader seasons, and above average temperatures during the early muzzleloader season. We observed a 16% decrease in the archery harvest from the 2016-17 (19,567) to 2015-16 season (23,323). Likewise, the crossbow harvest decreased by 12.6% during the 2016-17 season (3,989). Seventy-five percent of the overall harvest occurred during the modern firearm season (104,213).

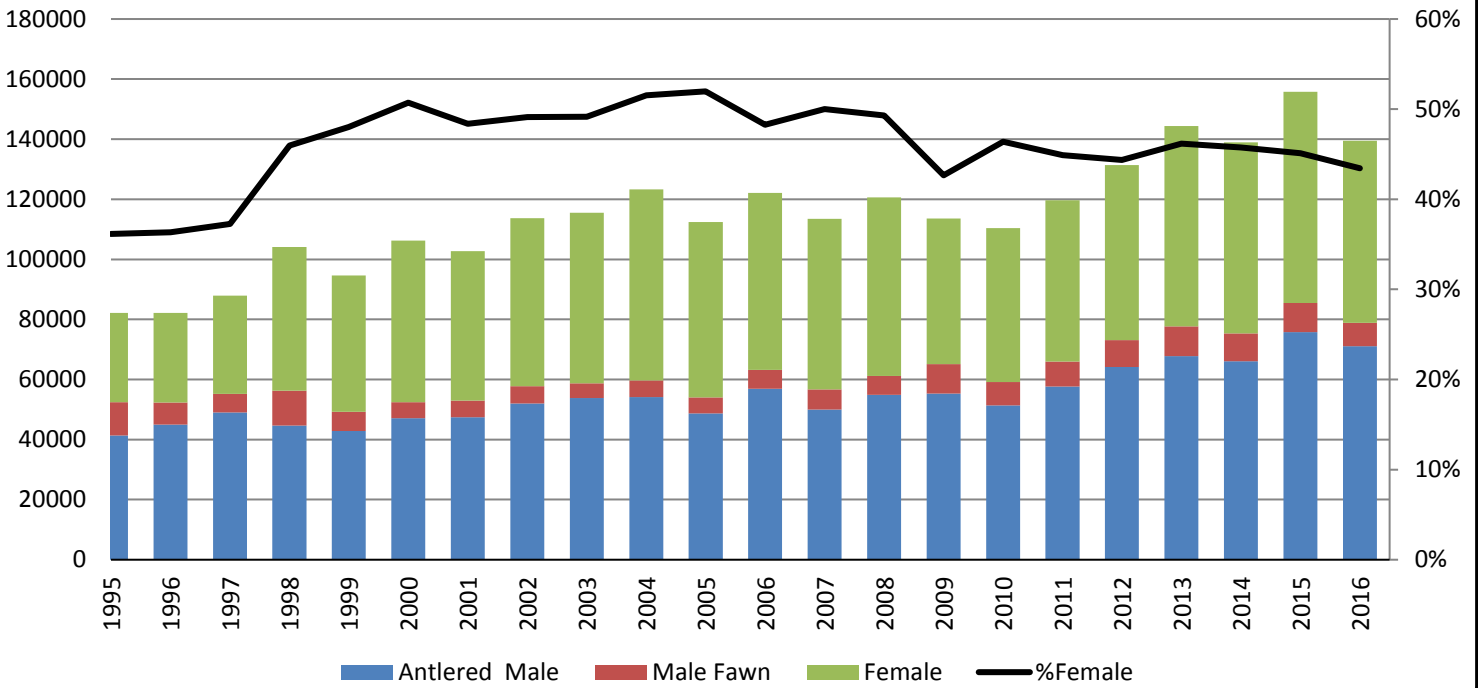


Weapon	Female	Male	Total
Archery	11,212	8,355	19,567
Crossbow	2,423	1,566	3,989
Firearm	39,926	64,287	104,213
Muzzle-loader	6,972	4,688	11,660
<b>Total</b>	<b>60,533</b>	<b>78,896</b>	<b>139,429</b>

Despite a statewide bag limit of four deer, there appears to be a limit on the number of deer that hunters are willing to, or able to harvest, as 76.8% of all hunters only harvest one deer. Of the 104,951 total successful hunters in the 2016-17 season, the average hunter harvested 1.33 deer, which was a slight increase from last season. However, this rate usually does not fluctuate between deer zones and has remained stable over time.

Deer harvest numbers can fluctuate greatly in a county or region due to harvest restrictions by zones. Even though the average hunter only harvests 1.33 deer, the successful hunters harvested approximately the same percentage of bucks and does. When compared to previous hunting seasons, the percentage of does in the harvest has fluctuated minimally over the last 15 years.

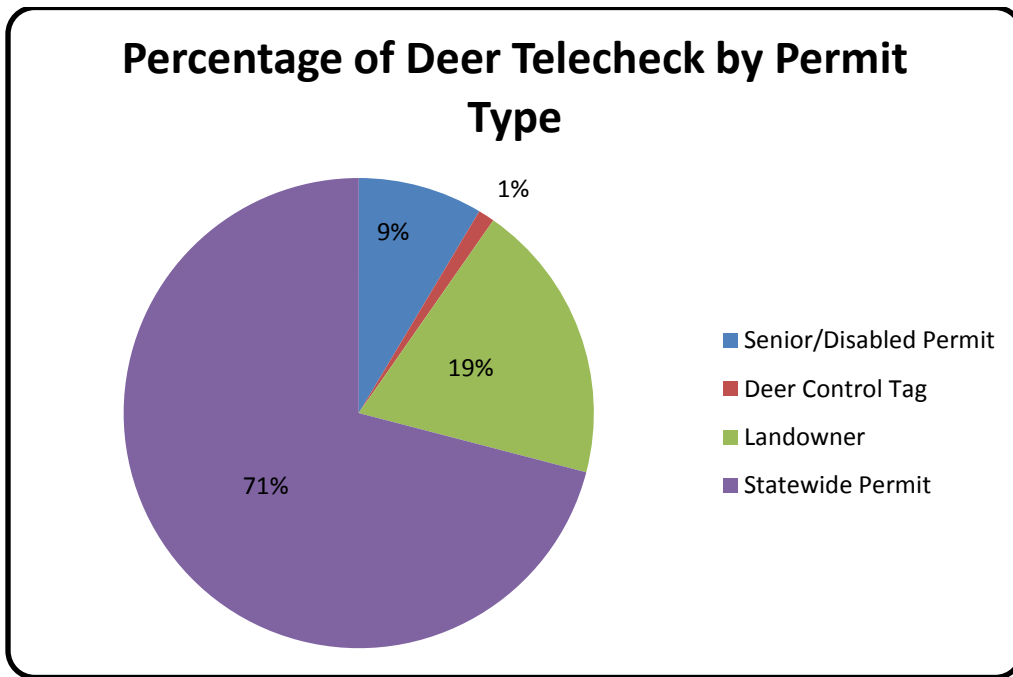
## Kentucky Harvest Breakdown Type



### Monthly Harvest Rates

The 5,009 deer harvested in September is the fifth highest harvest on record for that month. October's harvest of 12,639 deer was the lowest October harvest on record since 1999. Hunters harvested 107,060 deer during November, most of which occurred during the statewide modern firearms season. This ranks as the second best November harvest on record, and is second only to the 2015-2016 deer season. December's harvest was the fifth highest record harvest with 11,839. Cooler conditions in September and optimal weather conditions for the modern gun season in November drove the harvest. January had the second highest harvest on record at 2,895, mostly due to warmer than usual weather conditions.

2016-17 Harvest Results by Permit Type



Boone & Crockett Trophy Deer 2016-17 Season

Typical Score	Hunter	County	Method
181 7/8	Jacob Murphy	Russell	Modern Gun
179 3/4	Christopher Skaggs	Bath	Muzzleloader
175 5/8	Phillip West	Floyd	Muzzleloader
174 1/2	Evan Richardson	Webster	Modern Gun
171 5/8	Joseph C. Russell	Jefferson	Modern Gun
171 1/2	Kenny Fallaway	Ohio	Archery
170 3/4	Danny West	Todd	Modern Gun
170 1/8	Rickey West	Bell	Modern Gun
168	Chris Robinson	Russell	Modern Gun
165 3/4	Bryce Carman	Hardin	Modern Gun
165 5/8	Chris Turner	Spencer	Muzzleloader
165	Ridge Porter	Muhlenberg	Archery
164 7/8	Michael Oliver	Trigg	Modern Gun

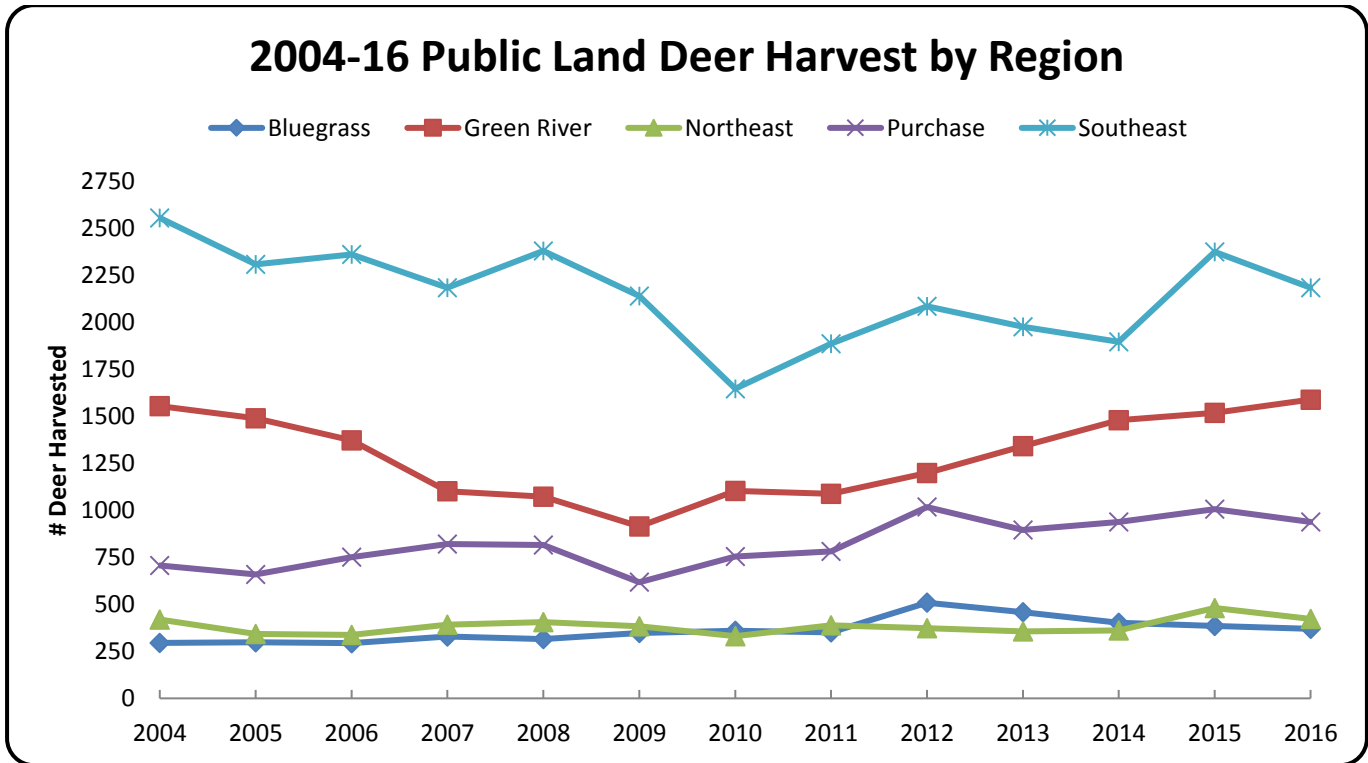
Kentucky Department of Fish and Wildlife Resources  
 #1 Sportsman's Lane Frankfort, KY 40601

164 3/4	Nathaniel Sandlin	Pendleton	Muzzleloader
164 1/2	Brad Fogle	Marion	Muzzleloader
163 1/2	Bobby Clarkson	Lincoln	Modern Gun
163 1/4	Tasha Tucker	Breckinridge	Muzzleloader
163 1/8	Mike Campbell	Scott	Archery
162 1/4	Stephen Anderson	Fayette	Archery
162 1/8	Dylan Brock	Laurel	Crossbow
162 1/8	Terry L. Landrum	Wolfe	Modern Gun
161 3/4	Hurley Combs Jr.	Laurel	Modern Gun
161 5/8	Cody L. Daniels	Knox	Modern Gun
161 5/8	Patrick Meredith	Hardin	Archery
161 1/2	Kevin Keaton	Henderson	Muzzleloader
161 1/4	Dylan Holthaus	Warren	Modern Gun
161 1/8	Roscoe S. Chappell	Hancock	Archery
160 3/8	Terry Isaacs	Jackson	Archery
160 3/8	Joshua D. Prewitt	Rockcastle	Modern Gun
160 1/4	Robert Martin	Henry	Modern Gun
160 1/4	Danny Phillips	Wayne	Modern Gun
<b>Non-Typical Score</b>	<b>Hunter</b>	<b>County</b>	<b>Method</b>
213 3/8	Erik Heller	Campbell	Modern Gun
201 3/4	Buddy Bishop	Casey	Modern Gun
201	Marshall Ridenour	Robertson	Archery
197 1/8	Daniel Lay	McCreary	Modern Gun
196	Patrick Shemwell	Muhlenberg	Archery
194 1/8	Brandon Rue	Woodford	Muzzleloader
193 3/4	Brian Strunk	Pulaski	Archery
190 3/4	Isabela F. Sparks	Daviess	Modern Gun
190 1/4	Hunter Jones	Breckinridge	Archery
187	Scott Bobbitt	Woodford	Archery
186	Warren Blevins	Edmonson	Archery
185 7/8	Isaac Ogle	Estill	Archery



## Public Land Harvest

KDFWR owns, leases, or manages more than 80 Wildlife Management Area’s (WMA) across the state for public use. On some areas, users must purchase a user permit. The rest are open to hunting through quota hunts or statewide regulations. The WMA’s are separated between five wildlife regions and are managed by regional staff. The number of WMA’s per region differs from region to region. The number of WMA’s per region are: Purchase Region (16), Green River Region (14), Bluegrass Region (15), Northeast Region (13), Southeast Region (39).



## Quota Hunt Results

KDFWR offers 30 quota hunts on Kentucky WMA’s along with three quota hunts on military installations (Ft. Knox, Bluegrass Army Depot, and Ft. Campbell). Any resident or nonresident hunter may apply for a deer quota hunt in Kentucky, but only the persons successfully drawn for quota hunts may hunt. The application period for KDFWR deer quota hunts is the month of September. Applicants can apply online at [fw.ky.gov](http://fw.ky.gov) or call 1-877-598-2401. Applicants will be given the option to pick a first and second hunt choice, but may be drawn to participate in only one quota hunt. The non-refundable fee is \$3 per hunter to apply. Each hunter who applies correctly, but is not selected, will receive a preference point that increases the odds of being drawn the next year. Unselected hunters who do not apply the following year will lose all previously credited preference points. Applicants are selected based on individual preference points. Up to five people can apply together with one call. If any one of the group’s Social Security numbers is drawn, the others in the group are automatically drawn, too.

For the 30 KDFWR quota hunts held in the 2016-17 season, 7,607 people applied for 4,427 spots across the state. There are quota hunts for general hunters (i.e., residents or non-residents with statewide license), mobility impaired hunters, archery/crossbow hunters, and youth hunters. Some quota hunts are for antlerless deer, some areas have a 15 inch minimum spread restriction on bucks, and some quota hunts only allow one deer to be taken per hunt. Each of the five wildlife regions across the state have deer quotas.

For the 2016-17 Report, quota hunts in the Bluegrass Region will be highlighted.

## Bluegrass Region Highlights 2016

### Kleber & Rich WMA's – Scott Ferrell, Wildlife Management Area Manager

Kleber WMA and Rich WMA, which are located in Owen and Franklin Counties, offer a combined firearms quota hunt held on the first weekend of November and December. Combined, the WMAs encompass 5,112 acres, with the bulk of the acreage located in Owen County. Typical terrain and habitats include rolling-to-steep hills containing a mixture of early successional and mature oak-hickory hardwoods and cedars, and also warm season grass fields along ridge tops and creek bottoms. 354 people were drawn for the 2016 quota hunts, but only 254 hunters (72%) actually hunted. There is ample deer hunting opportunity on these WMAs; Owen County has an estimated deer density of 75 deer/ mile<sup>2</sup> and Franklin County has an estimated density of 57 deer/ mile<sup>2</sup>. 54 deer were harvested during the 2016 quota hunts, which is slightly down from the 71 deer harvested the previous year. However, there was an abundance of hard mast on the WMAs which often results in a lower harvest. Quota hunters observed/reported 668 deer during the November and December quota hunts: 223 antlered deer, 440 antlerless deer, and 5 deer of unknown sex. Percentage of bucks in the harvest was higher than does, with 37 males taken (69%) and 17 females deer taken (31%). Quota hunters on Kleber WMA harvested 21 males and 7 females, while quota hunters on Rich WMA harvested 16 males and 10 females. Since the elimination of the WMA bonus buck tag, quota hunters have become more selective and KDFWR staff have observed an increase in the quality of bucks and age at harvest. The following table includes data for both the November and December quota hunts.

<b>Total Legal Harvest</b>				<b>Total Deer:</b>	
<b>Adult Bucks:</b>	31	<b>Adult Does:</b>	11	<b>Buck Ratio:</b>	74%
<b>Buck Fawns:</b>	6	<b>Doe Fawns:</b>	6	<b>Fawn Ratio:</b>	22%
<b>Total Bucks:</b>	37	<b>Total Does:</b>	17	<b>Antlerless Ratio:</b>	43%
<b>Known illegal kills or lost cripples during hunt:</b>				6	
<b>Total deer permits issued:</b>	354			<b>Total Hunting Hrs:</b>	3088.5
<b>Total hunters actually hunting:</b>	254			<b>Total Deer Seen:</b>	668
<b>Total Hunter Show Up Ratio:</b>	72%			<b>Deer Seen/Hour:</b>	0.22
<b>Total Hunter Success Ratio:</b>	21%				



**Kentucky River WMA** – Scott Ferrell, Wildlife Management Area Manager

Kentucky River WMA, which is located in Henry and Owen Counties, offered its second firearms quota hunt on the first weekend of November. Kentucky River WMA is approximately 3,643 acres in size. The area is dominated by oak-hickory forested ridges, but there are also ample river bottoms planted in warm season grasses, fallow fields, row crop grains, and also intermittent wetlands. There is ample deer hunting opportunity at Kentucky River WMA. Owen County has an estimated deer density of 75 deer/ mile<sup>2</sup> and Henry County has an estimated density of 52 deer/ mile<sup>2</sup>. 66 hunters were selected for this quota hunt, but only 54 hunters (82%) checked in. Harvest remained relatively stable from 2015, with just three less deer being harvested in 2016. 66 people were drawn with 54 hunters checked in to hunt resulting in an 82% hunter show up ratio. Deer numbers are estimated to be at approximately 75 deer per square mile in Owen County and 52 deer per square mile in Henry County. Kentucky River quota deer hunters observed/reported 259 deer during the hunt: 91 antlered deer and 168 antlerless. 15 males (71%) and 6 females (29%) were harvested. The following table includes data for the quota hunt.

**Total Legal Harvest**

<b>Adult Bucks:</b>	10	<b>Adult Does:</b>	4
<b>Buck Fawns:</b>	<u>5</u>	<b>Doe Fawns:</b>	<u>2</u>
<b>Total Bucks:</b>	15	<b>Total Does:</b>	6

<b>Total Deer:</b>	21
<b>Buck Ratio:</b>	71%
<b>Fawn Ratio:</b>	33%
<b>Antlerless Ratio:</b>	52%

**Known illegal kills or lost cripples during hunt:** 0

<b>Total deer permits issued:</b>	66
<b>Total hunters actually hunting:</b>	54
<b>Total Hunter Show Up Ratio:</b>	82%
<b>Total Hunter Success Ratio:</b>	39%

<b>Total Hunting Hrs:</b>	673.5
<b>Total Deer Seen:</b>	259
<b>Deer Seen/Hour:</b>	0.39



**Taylorsville Lake WMA** – Scott Buser, Public Lands Biologist

During the first full weekend in November, December, and January, the Kentucky Department of Fish and Wildlife Resources offer quota deer hunting opportunities on the 9,418 acre Taylorsville Lake Wildlife Management Area. Like all other deer quota hunts offered by KDFWR on non-military property, the deadline to submit an application for these hunts is the month of September. All three quota hunts offer mobility-impaired hunters access to 650 acres. While all participants may hunt on this area, only mobility-impaired hunters may access the area by motorized vehicle.

All three hunts have 268 regular slots and 7 mobility-impaired slots available. Hunt #1 is an antlerless only hunt and hunts #2-3 are either sex hunts. Taylorsville Lake WMA is currently a Zone 1 area, which means an unlimited number of antlerless deer may be taken. Roughly 75% of the 275 hunters check in for each quota hunt. Although access to the WMA is limited in some areas, all of the property is accessible by water if hunters have access to a boat. There are four available boat ramps conveniently located across the lake. Gated interior roads are open for these hunts to allow additional access.

A change to the 2017-18 season will eliminate the January hunt, leaving November & December hunts intact.

**2016 results**

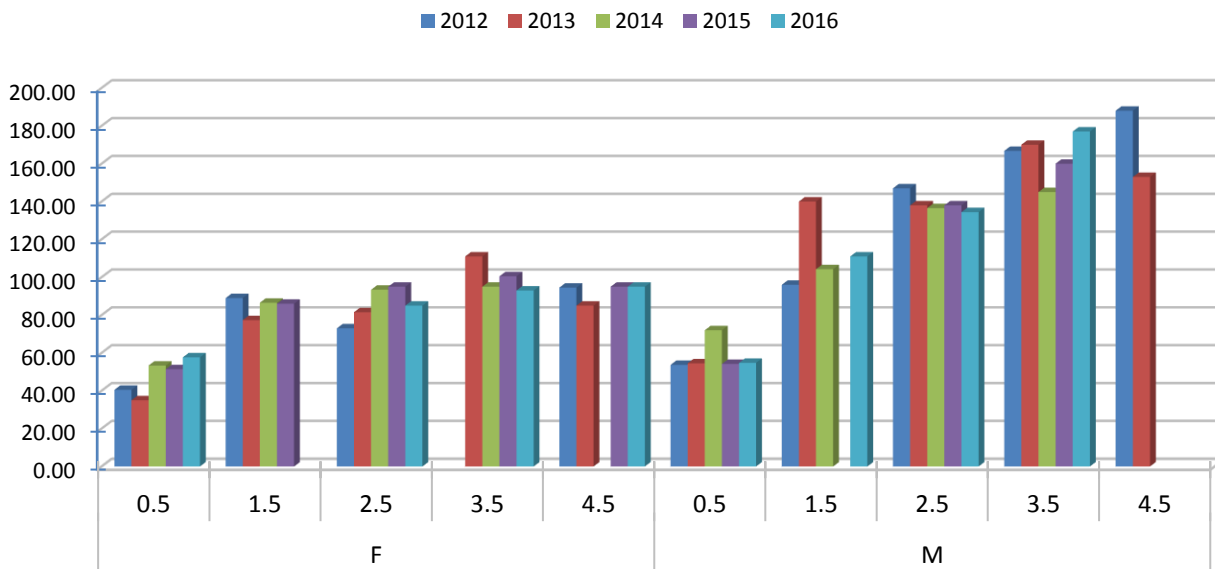
<b>Hunt</b>	<b>#1</b>	<b>#1mi</b>	<b>#2</b>	<b>#2mi</b>	<b>#3</b>	<b>#3mi</b>
<b>Drawn</b>	268	9	606	7	310	2
<b>Check-in</b>	209	1	190	2	161	1

<b>Hunt</b>	<b>participants</b>	<b>hours hunted</b>	<b>deer seen</b>	<b>antlered seen</b>	<b>deer killed</b>
<b>#1 W.M.A.</b>	210	1,315	719	310	69
<b>#2 W.M.A.</b>	190	1,853	367	72	24
<b>#3 W.M.A.</b>	162	1,315	353	43	32

**Veteran's Memorial WMA** – David Frederick, Public Lands Biologist

Veteran's Memorial WMA encompasses 2,497 acres and is located in Scott County. Terrain consists of rolling hills with an elevation range of 860-1,020 feet. The area habitat is 74% forested and 26% open land. Annual Thermal Infrared surveys and a 2012 Herd Health Check indicated that the herd was larger than what the habitat could support. During the first 2 years the quota hunt resulted in 289 total harvested deer. Does made up 61% (177 does) of the harvest while bucks made up 39% (112 bucks). A quota hunt has been administered during the 1<sup>st</sup> weekend of November from 2012 to present. In an effort to lower the deer population, a second antlerless-only quota hunt was established in 2015 and is held during the first weekend in December. The average show up rate for the November quota hunt has been 79% while the December hunt has averaged 57%. Average hunter success rates are 38% for the November quota hunt, and 21% for the December quota hunts.

Average weights by sex and age 2012-2016



**Blue Grass Army Depot** - Tom Edwards, Public Lands Biologist

Blue Grass Army Depot (BGAD) provides approximately 10,000 acres for public deer hunting in Madison County. While the depot’s mission of storing chemical and conventional weapons for the Department of Defense requires very stringent restrictions for public access, it has provided deer hunting opportunity for an average of 405 deer hunters per season over the last 5 seasons. Included in that number are more than 100 youth hunters each season. Commonly there are as many as 10 youth per year who kill their first deer while hunting on BGAD.

Prospective deer hunters must pass background checks once selected for one of the archery or muzzle-loading rifle hunts. Selected hunters are then assigned to BGAD hunt officials and placed in specific individual hunt areas. These restrictions, in conjunction with constant BGAD security patrols, make this facility one of the most controlled deer hunts in Kentucky.

The 4-day long archery deer hunts, which were added to the quota hunt opportunities in the 2012 season, have become very popular with Kentucky deer hunters. Hunters selected for one of these slots were assigned a 100-200 acre tract of land in the perimeter area of the depot where they could bow hunt alone for four days. During that period they could take two deer and two turkeys.

**General BGAD Deer Hunting Rules**

- Minimum legal outside antler spread of 15 inches.
- Hunters are permitted to take 2 deer during the 1-day hunts. (2 antlerless or 1 antlered and 1 antlerless).
- During the October archery hunt, deer hunters may also take a wild turkey.
- Deer and turkey harvested on BGAD are bonus animals and do not apply to a hunter’s statewide bag limit for either species.
- Archery and muzzleloader rifle deer quota hunts are held on Saturdays from daylight to 2pm.

Kentucky Department of Fish and Wildlife Resources  
 #1 Sportsman’s Lane Frankfort, KY 40601

- Hunters are allowed to scout and place deer stands on the Friday before their hunt.
- Outside tract hunters will be allowed to bring a hunting or non-hunting buddy.
- All deer hunters may now apply and be drawn with a hunting buddy.
- Hunters must apply for the deer hunt lottery (and all other species) during the month of July.

**Deer Harvest Results**

While the number of does harvested over the last 5 years has remained relatively constant, the number of legal bucks (those with 15” or greater outside antler spread) has steadily declined. The total number of illegal bucks (less than 15” antler spread) and the number of button bucks brought to the check station has dramatically dropped in the last two years.

Total Harvest Results since 2012				
Year	Legal Antlered Bucks	Button or Illegal Bucks	Does	Total Harvest
<b>2016</b>	35	5	70	110
<b>2015</b>	44	3	72	119
<b>2014</b>	49	19	99	167
<b>2013</b>	59	14	74	147
<b>2012</b>	53	17	74	144
<b>Total</b>	240	58	389	687

**Age at Harvest for Antlered Deer**

The ages of antlered deer (both legal and illegal) harvested each year were grouped into three categories: 1) 1.5 - 2.5-years old, 2) 3.5-years old, and 3) ≥4.5-years old. Percentages in each age group fluctuated widely during the 5-year period, but the underlying factors associated with these fluctuations are unclear. However, these data seem to indicate that there were fewer younger-age-class bucks available for harvest in 2015 which may account for the sharp decline in harvest experienced from 2014 to 2015.

Percent Antlered in the Harvest

Year	% 1.5 or 2.5	% 3.5	% 4.5+
<b>2016</b>	39%	61%	18%
<b>2015</b>	17%	83%	52%
<b>2014</b>	54%	46%	13%
<b>2013</b>	45%	55%	31%
<b>2012</b>	64%	36%	19%
<b>Total</b>	44%	56%	27%

## Damage Issues

An overpopulation of deer can have a negative impact on the environment and humans alike. Overabundant deer populations may result in agricultural and landscape damage, be detrimental to forest health and regeneration, pose safety risks due to deer-vehicle collisions, and also serve as vectors for the transmission of tick-borne illnesses. State, local and private groups all have a stake in helping to manage the state's deer population. The primary tool for deer management in Kentucky is hunting, but hunting within the season framework alone may not be enough to curtail the issues that some stakeholders experience. Deer populations have the ability to outgrow what their habitat can reasonably sustain, or surpass what is known as the environmental carrying capacity. However, a much less understood issue in modern deer management is social carrying capacity, which is essentially the number or density of deer that is socially acceptable. KDFWR staff can offer their assistance once this threshold has been reached (see Contacts map on page 23). The biologist or Conservation Officer will schedule an on-site visit to document the damage and provide technical guidance on potential solutions. Technical guidance can be offered in many ways; however, the best damage mitigation strategy is a dedicated, long-term hunting regiment. In addition to hunting, assistance from KDFWR may come in the form of Deer Control Tags, Destruction Permits, and the use of KRS 150.170.

### Deer Control Tags Use in 2016

Region	DCT's Issued	DCT's Used	% Used
<b>BG</b>	1035	404	39%
<b>GR</b>	1296	416	32%
<b>NE</b>	831	245	29%
<b>PR</b>	732	192	26%
<b>SE</b>	705	259	37%
<b>Total</b>	4599	1516	33%

### Destruction Permit Use from 2016

Region	Destruction Permits Issued	Destruction Permits Used
<b>BG</b>	503	288
<b>GR</b>	6	10
<b>NE</b>	5	0
<b>PR</b>	170	34
<b>SE</b>	4	7
<b>Total</b>	688	339

### Deer Reported to Law Enforcement Killed Under KRS 150.170 during 2016

Region	Total Kill	Antlered	Antlerless
<b>BG</b>	13	3	10
<b>GR</b>	24	0	24
<b>PR</b>	9	0	9
<b>NE</b>	0	0	0
<b>SE</b>	0	0	0
<b>Total</b>	46	3	43

## Disease Surveillance

### Hemorrhagic Disease (HD)

Hemorrhagic disease (HD), which is a vector-borne disease of white-tailed deer, is caused by two related orbiviruses: epizootic hemorrhagic disease virus (EHDV) and bluetongue virus (BTV). HD viruses are considered the most important viral agents affecting deer populations in the United States. The virus is transmitted from animal to animal through the bite of an infected midge which are active in the late summer and early fall. Severe outbreaks are often associated with drought conditions because drought creates an increased amount of breeding habitat for the midges. The midges die off for the year after a hard freeze, eliminating new cases of HD.

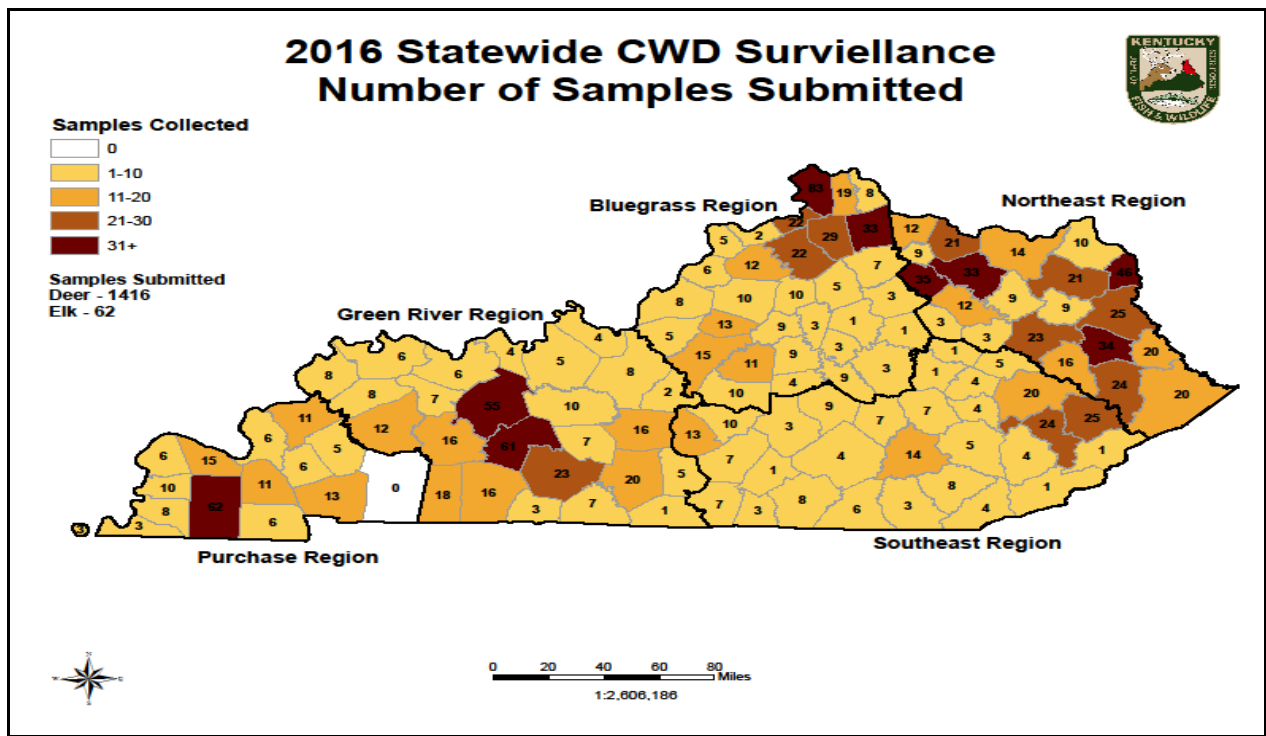
HD is reported in deer from at least a few counties nearly every year in Kentucky, although outbreaks can be considerably large and widespread. The 2007 outbreak of HD in wild deer was the most widespread outbreak reported in the past 30 years. Over 4,000 suspected cases were reported in Kentucky. When possible, KDFWR will test animals that have died of apparent EHD. Although there were reports of deer exhibiting symptoms of EHD, none were clinically diagnosed with the disease during 2016.

### Chronic Wasting Disease (CWD)

CWD is a fatal, neurological disease in white-tailed deer, mule deer, elk and moose. It causes a characteristic spongy degeneration of the brains of infected animals resulting in emaciation, abnormal behavior, loss of bodily functions, and ultimately death. CWD is categorized as a transmissible spongiform encephalopathy (TSE), a group that includes “mad cow” disease in cattle, Creutzfeldt-Jakob disease in humans, and scrapie in sheep and goats. CWD has been detected in 23 states and 2 Canadian provinces. Five states that border Kentucky have CWD present (West Virginia, Virginia, Missouri, Ohio, and Illinois). CWD has not been detected in Kentucky.

To detect CWD should it arrive in Kentucky, KDFWR adopted a CWD monitoring plan in 2002. That plan is a four part monitoring program to test: 1) a random sampling of hunter-harvested deer, 2) target or suspect animals (i.e., animals that appear ill), 3) a random sample of roadkill deer, and 4) all captive deer mortalities. In 2006, KDFWR adopted a contingency plan to deal with CWD if it was ever found in Kentucky. Since 2002, approximately 27,000 deer samples have been tested. 1,416 deer were submitted for CWD testing in 2016-2017, and all samples have tested negative for the disease.





### Carcass Importation Law

Intact deer carcasses from all CWD-positive states, including Illinois, Missouri, Ohio, West Virginia, and Virginia may not be brought into Kentucky. Allowed parts from CWD-positive states and provinces include quarters or other portions of meat with no part of the spinal column or head attached, boned-out meat, antlers, antlers attached to a clean skull plate, a clean skull, clean teeth, hides, and finished taxidermy products.

### General Information about the 2016-17 Season

#### License and Permit Fees

License	Resident	Nonresident
Annual Hunting License	\$20	\$140
Senior/Disabled License	\$5	N/A
Sportsman's License	\$95	N/A
Youth Sportsman's License	\$30	N/A
Statewide Deer Permit	\$35	\$120
Bonus Antlerless Permit	\$15	\$15
Youth Deer Permit	\$10	\$15

**Season Dates and Bag Limits**

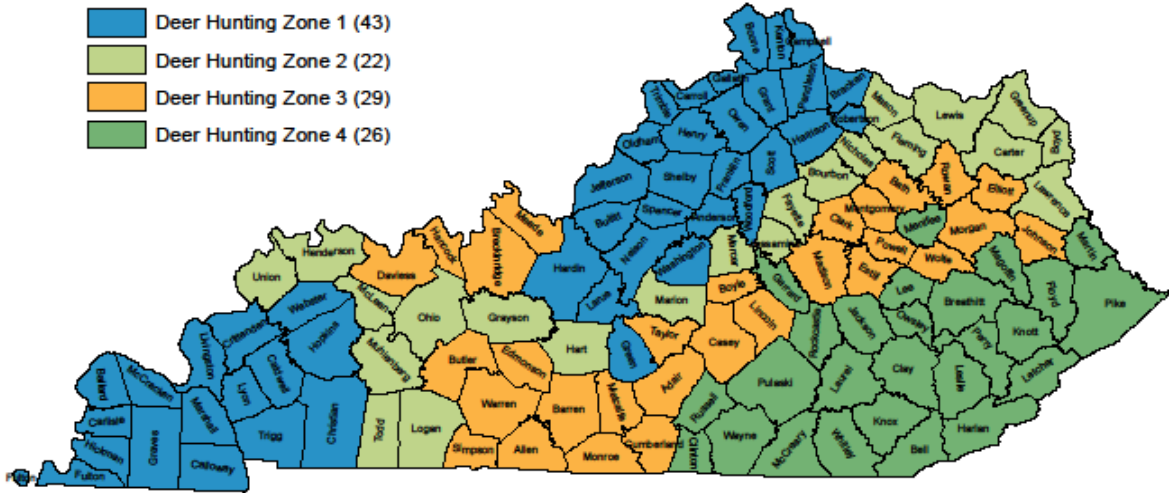
	<b>Statewide</b>	<b>Zone 1</b>	<b>Zone 2</b>	<b>Zone 3</b>	<b>Zone 4</b>
<b>Modern Firearm</b>		Nov 12-27	Nov 12-27	Nov 12-21	Nov 12-21
<b>Archery</b>		Sept 3- Jan 16	Sept 3- Jan 16	Sept 3- Jan 16	Sept 3- Jan 16
<b>Early Crossbow</b>		Oct 1-16	Oct 1-16	Oct 1-16	Oct 1-16
<b>Late Crossbow</b>		Nov 12-Dec 31	Nov 12-Dec 31	Nov 12-Dec 31	Nov 12-Dec 31
<b>Early Muzzleloader</b>		Oct 15-16	Oct 15-16	Oct 15-16	Oct 15-16
<b>Late Muzzleloader</b>		Dec 10-18	Dec 10-18	Dec 10-18	Dec 10-18
<b>Youth-Only Firearms</b>	Oct 8-9				
<b>Free Youth Weekend</b>	Dec 31-Jan 1				
<b>Antlered Bag Limit</b>	1				
<b>Antlerless Bag Limit</b>	Based upon zone	Unlimited	Up to 4	Up to 4, only 2 deer with a firearm	Up to 4. Only 2 deer with a firearm, antlerless deer can only be killed with a firearm during the last 3 days of the late muzzleloader

# Deer Hunting Zones For 2016-17



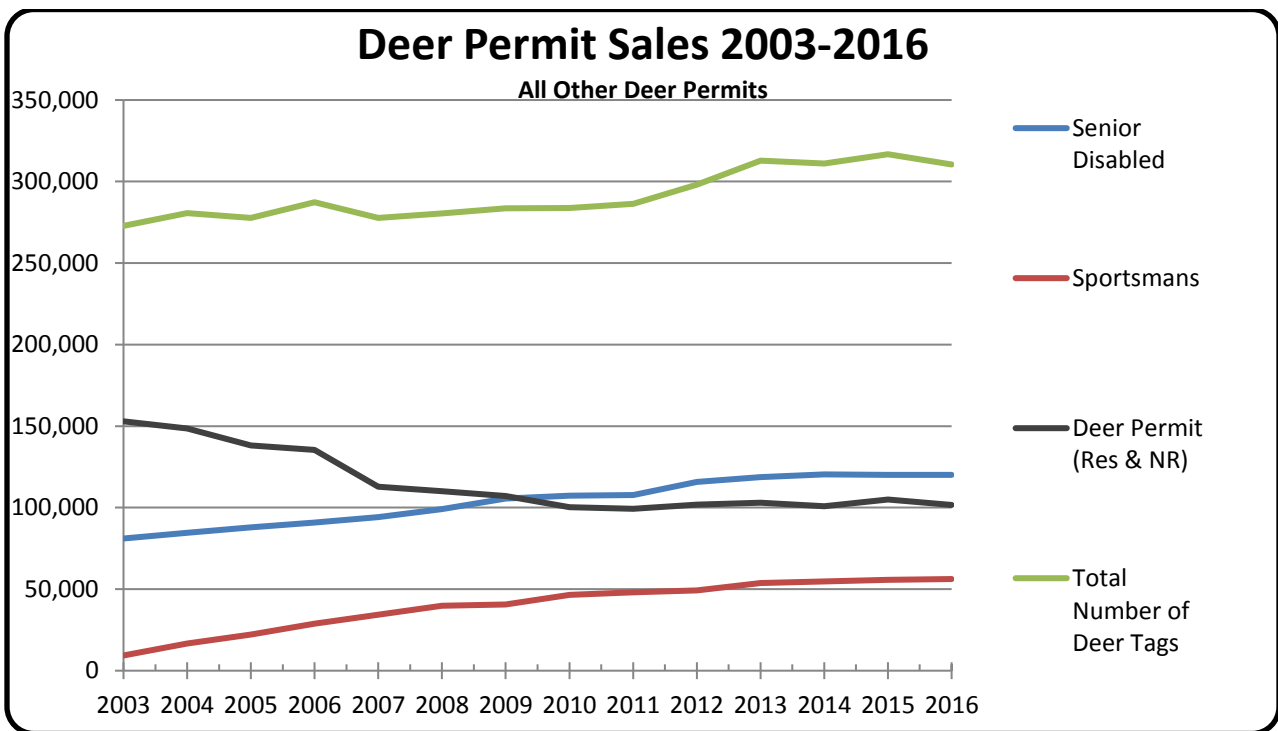
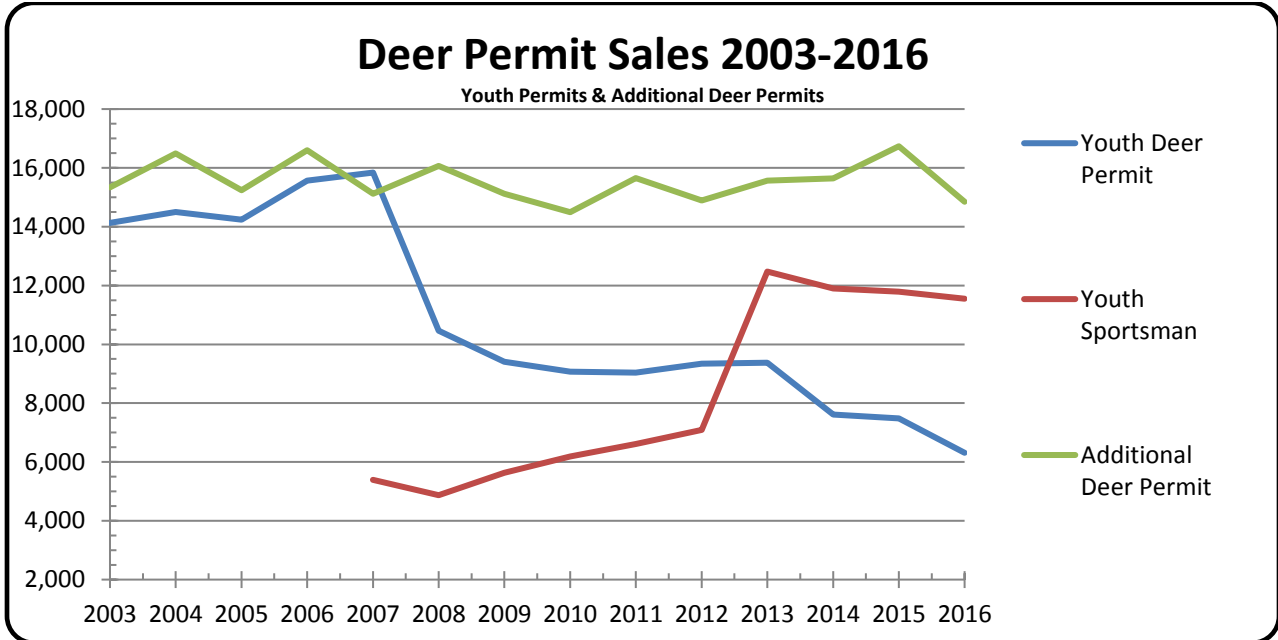
## Deer Zones

- Deer Hunting Zone 1 (43)
- Deer Hunting Zone 2 (22)
- Deer Hunting Zone 3 (29)
- Deer Hunting Zone 4 (26)

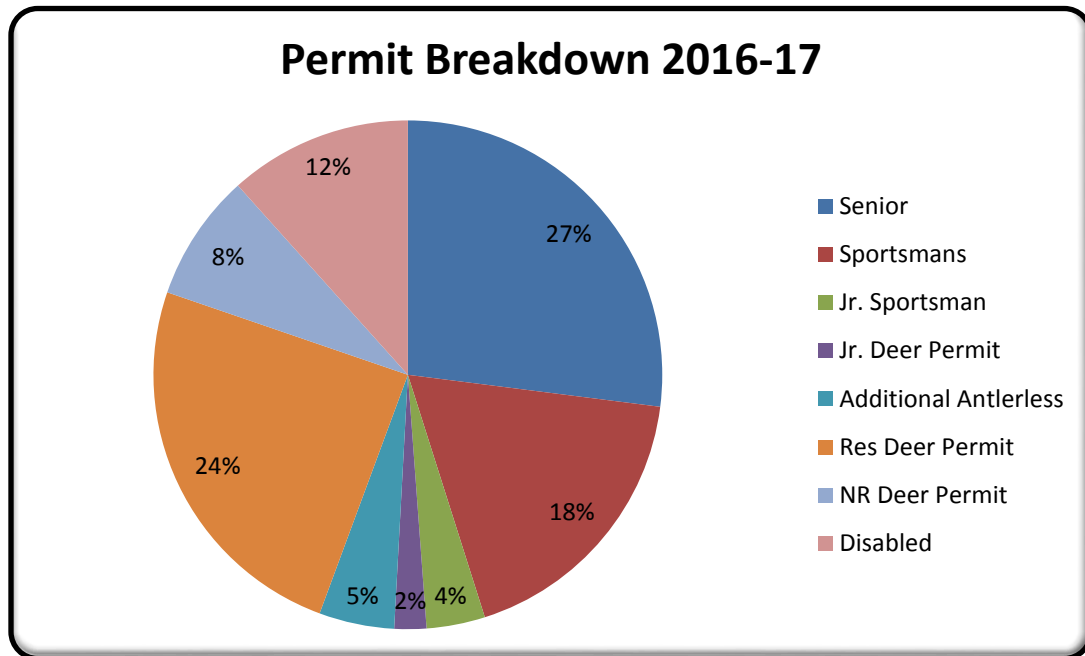


## Deer Permit Sales

In recent years the number of deer permits sold has remained stable. When including the license bundles (Sportsman's, Jr. Sportsman's, Jr. Deer Permit, Resident and Non-Resident Deer Permit, and Bonus Antlerless Permit) in the total deer permit numbers, there was a slight decrease in license sales compared to the 2015-16 season (316,756). However, deer permit sales have been relatively stable over the past three years.



Upon further examination of license sales, the majority of deer permits are purchased by senior/disabled hunters (27%), followed closely by resident deer hunters (24%), and Sportsman License (18%) buyers. Over the last few years there was a steady increase in the number of senior licenses sold and a slow decrease in resident deer permit sales. The overall number of deer hunters is stable to slightly increasing. However, the number of senior licenses is increasing, indicating that a majority of Kentucky deer hunters are reaching the age of 65 (i.e., the age at which you can purchase as Senior License).



### Changes for the 2017-2018 Deer Season

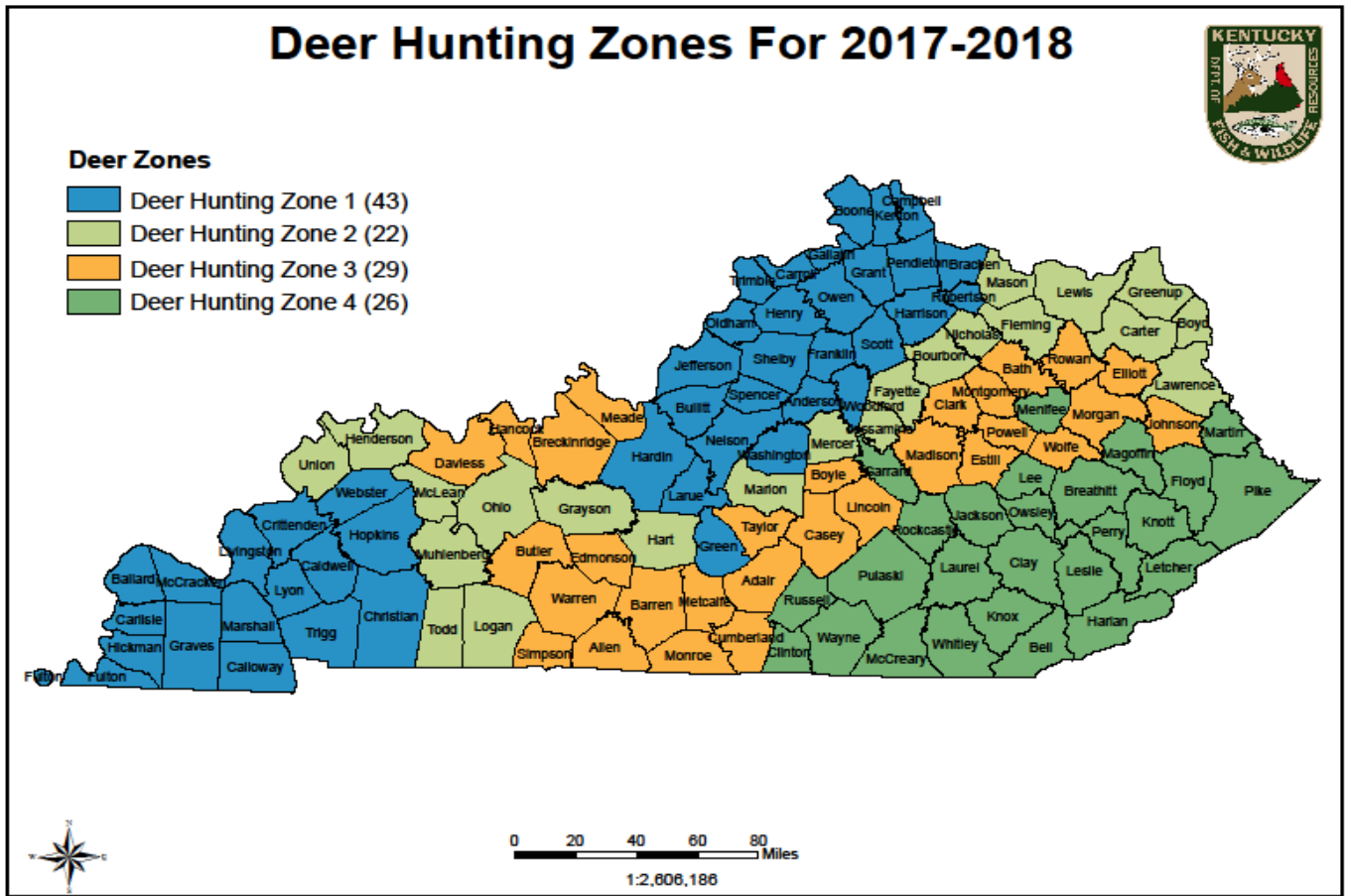
- Hunters may remove the hide or head of a harvested deer prior to telechecking it but must retain proof of sex of the animal. In such cases, it is still necessary to fill out the harvest log immediately after harvest and telecheck the animal before midnight on the day the deer is harvested or recovered.
- Air guns of .35 caliber or larger charged by an external tank, shooting single projectile ammunition designed to expand upon impact are legal modern gun equipment for deer.

### PUBLIC LANDS

- Rolling Fork River WMA in LaRue and Nelson Counties is open under statewide regulations for all species in accordance with the counties in which it is located. Stephens Creek WMA in Gallatin County and Meadow Creek WMA in Wayne County are open to public hunting with some restrictions.
- Whenever gun deer hunting is allowed on a wildlife management area, state park, or the Otter Creek Outdoor Recreation Area, a person who will be hunting from inside a ground blind must first attach a hat or vest made of solid, unbroken hunter orange material to the blind so it is visible from all sides.

- County zone deer bag limits apply to all quota hunts and open WMAs unless otherwise noted.
- The December muzzleloader deer season is open under statewide regulations on Curtis Gates Lloyd WMA, Dewey Lake WMA, Dr. James R. Rich WMA, Fishtrap Lake WMA, Griffith Woods WMA, John A. Kleber WMA, John C. Williams WMA, Kentucky River WMA, Knobs State Forest, Mullins WMA, Paintsville Lake WMA, Ping-Sinking Valley WMA, T.N. Sullivan WMA, Taylorsville Lake WMA, Twin Eagle WMA, Veterans Memorial WMA and Yellowbank WMA.
- The youth gun deer season and free youth weekend are open under statewide regulations on Beaver Creek WMA, Dennis-Gray WMA, Green River Lake WMA, Mill Creek WMA, Mullins WMA, Redbird WMA, T.N. Sullivan WMA and Twin Eagle WMA.
- The 15-inch minimum outside antler spread restriction for deer has been removed on Ballard WMA, Dennis-Gray WMA, Dewey Lake WMA, Green River Lake WMA, Paintsville Lake WMA, Pennyryle State Forest, Tradewater WMA, West Kentucky WMA, Green River Lake State Park and Jenny Wiley State Resort Park.
- Open deer hunts are offered on the following state parks on the following dates. Contact the host state park for complete details, including the number of available slots, equipment restrictions, bag limits and check-in and check-out procedures.
  - Blue Licks Battlefield State Resort Park (859-289-5507): Starting the first Saturday in January for two consecutive days.
  - Carter Caves State Resort Park (606-286-4411): Antlerless deer only, starting the first Monday in December for seven consecutive days.
  - John James Audubon State Park (270-826-2247): Starting the first Friday in December for three consecutive days.
  - My Old Kentucky Home State Park (502-348-3502): Starting the second Thursday in December for four consecutive days.
- An open youth hunt is held at Taylorsville Lake State Park on the second Saturday in October for two consecutive days and is limited to youths ages 15 and younger. Contact the state park at 502-477-8713 for complete details, including the number of available slots, equipment restrictions, bag limits and check-in and check-out procedures.
- On Mill Creek WMA, the quota deer hunt has been eliminated in favor of opening the modern gun deer season for two consecutive days starting the second Saturday in November.
- Seven new quota hunts will be held on four different state parks (Dale Hollow Lake State Resort Park, Greenbo Lake State Resort Park, Kenlake State Resort Park, Kincaid Lake State Park).
- On West Kentucky WMA, the quota deer hunt is scheduled for four consecutive days starting the Saturday before Thanksgiving. A youth mentor shotgun-only quota deer hunt on the “A” tracts of the WMA is scheduled for four consecutive days starting the Saturday before Thanksgiving.
- On Taylorsville Lake WMA, the January quota deer hunts have been eliminated. Drawn hunters may harvest either-sex deer in the remaining quota deer hunts. Preference points no longer will be awarded for female deer harvested in the November quota hunts.

- Participants in the Lake Barkley State Resort Park and Greenbo Lake State Resort Park quota deer hunts must check in and check out at the unmanned check station at the park headquarters.



\*Date changes only reflect the calendar shift from 2016 to 2017.

## Contacts

Approximately 95% of Kentucky is privately owned. To successfully manage our wildlife resources, the KDFWR works cooperatively with Kentucky’s private landowners. One of the essential ingredients in conserving Kentucky’s wildlife resources is habitat improvement. Wildlife biologists are available to work with interested individuals or groups on properties that they own or have management rights on.

Refer to the map below to contact your local wildlife biologist for assistance with wildlife management on your property.

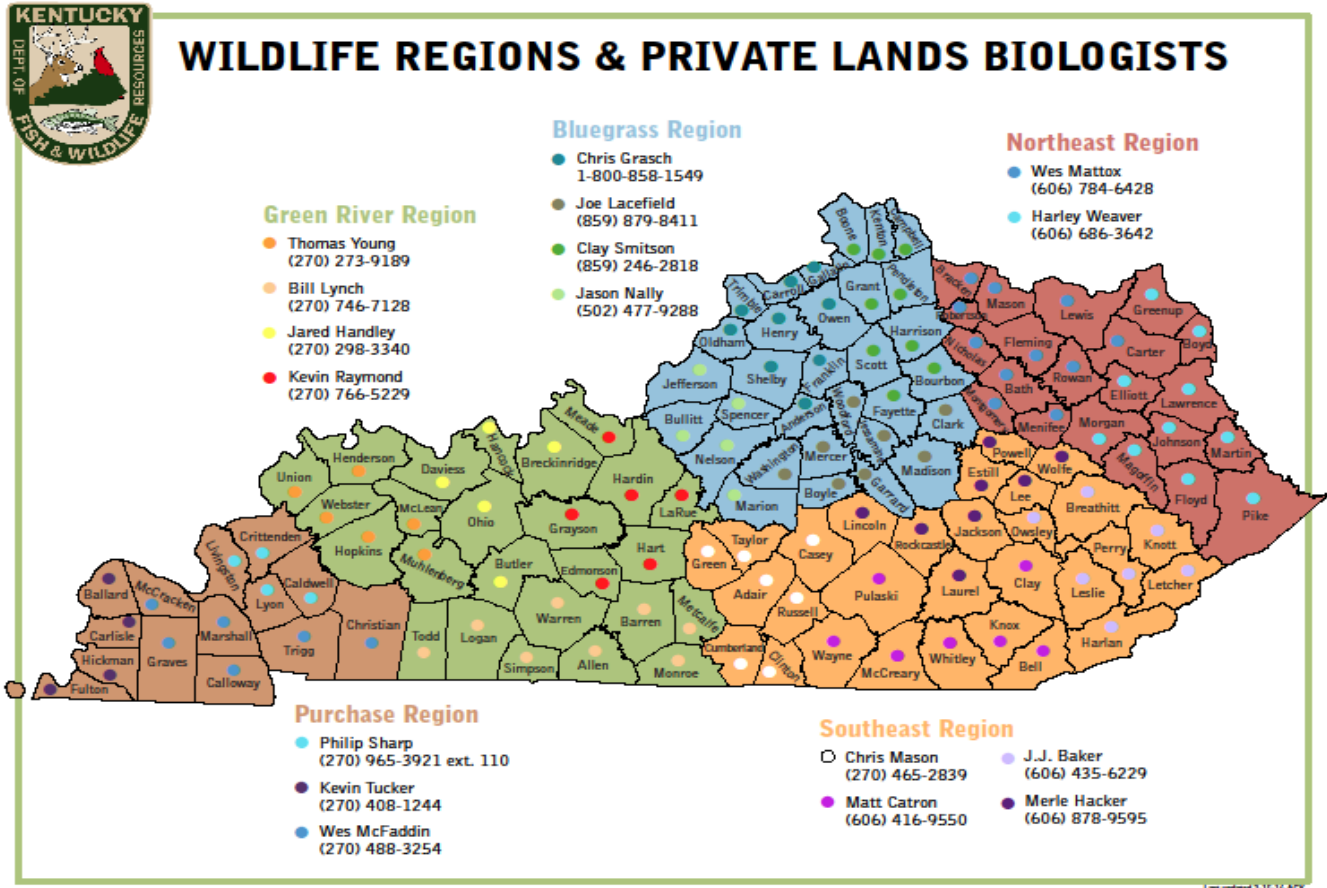






Photo courtesy of Joe Lacefield, KDFWR Private Lands Biologist



The Department of Fish and Wildlife Resources is funded through the sale of hunting and fishing licenses. It receives no general fund tax dollars.

Kentucky Department of Fish and Wildlife Resources  
#1 Sportsman's Lane Frankfort, KY 40601