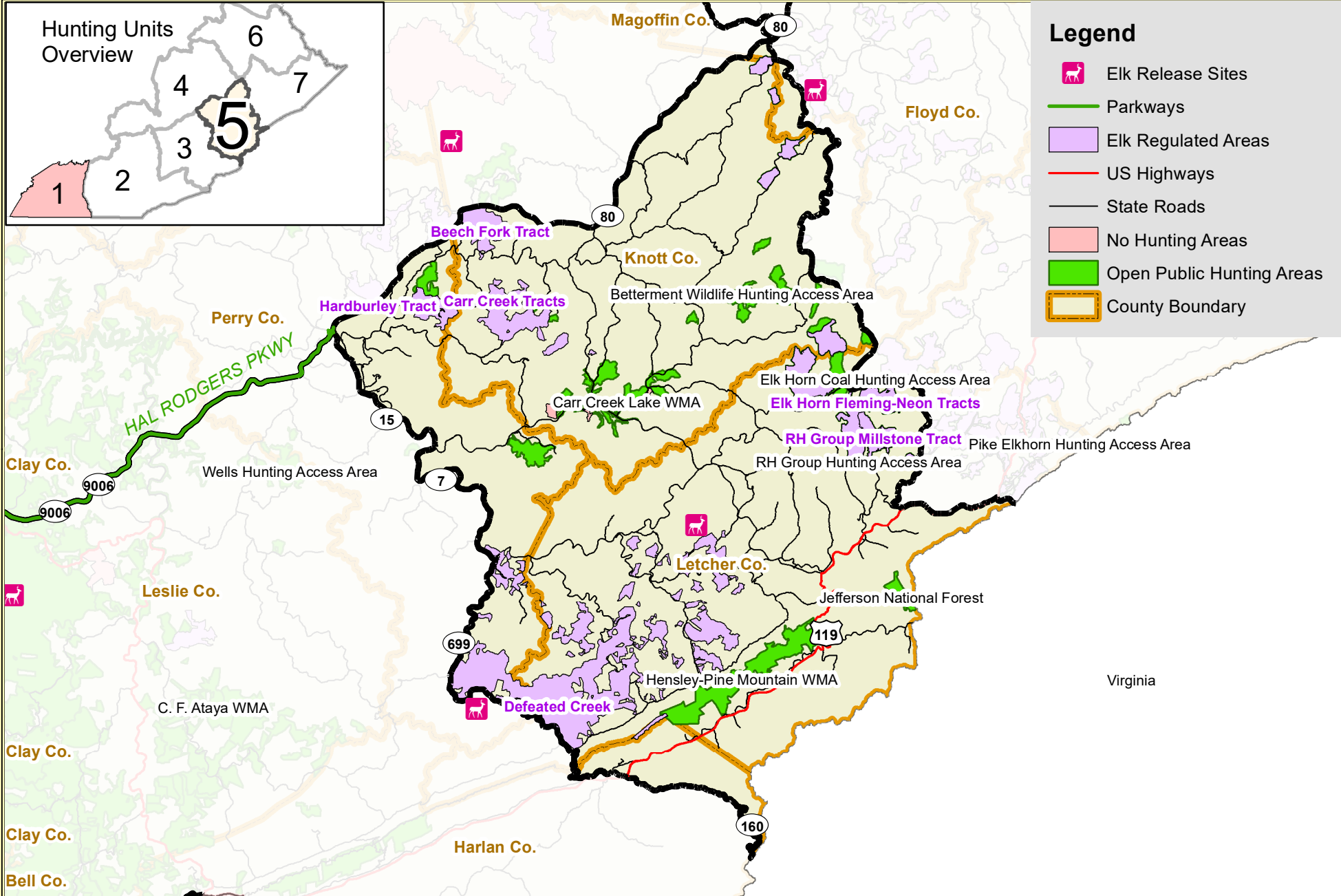
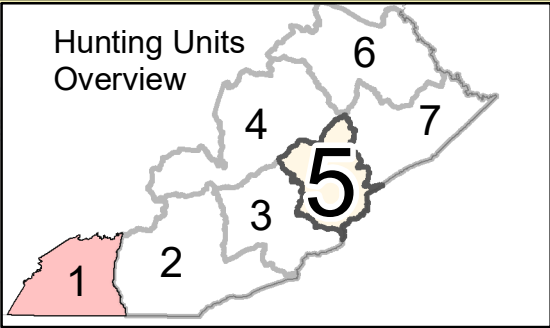


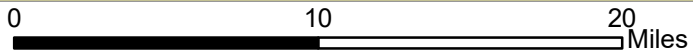
Elk Hunting Unit 5

The following page describes the boundary roads.



Legend

- Elk Release Sites
- Parkways
- Elk Regulated Areas
- US Highways
- State Roads
- No Hunting Areas
- Open Public Hunting Areas
- County Boundary



1:400,000

ELK HUNTING UNIT 5 BOUNDARY DESCRIPTION

Including portions of Harlan, Letcher, Perry, Floyd, and Knott counties, the western boundary of unit 5 follows highway 160 north from the Kentucky-Virginia border to the intersection of highway 463; north along highway 463 to the intersection of highway 699; north along highway 699 to the intersection of highway 7; north along highway 7 to the intersection of highway 15; north along highway 15 to the intersection of highway 80; east on highway 80 to the intersection of highway 7; south along highway 7 to the intersection of highway 317; south along highway 317 to the intersection of highway 805; south along highway 805 to the intersection of highway of 119; northeast on highway 119 to the intersection of highway 23; south on highway 23 to the Kentucky-Virginia border; south southwest along the Kentucky-Virginia border to highway 160 to complete the unit 5 boundary.

To view a more detailed maps of a specific Public Hunting Area or Regulated Area please visit the following links: [Public Hunting Areas](#) and [Regulated Areas](#)