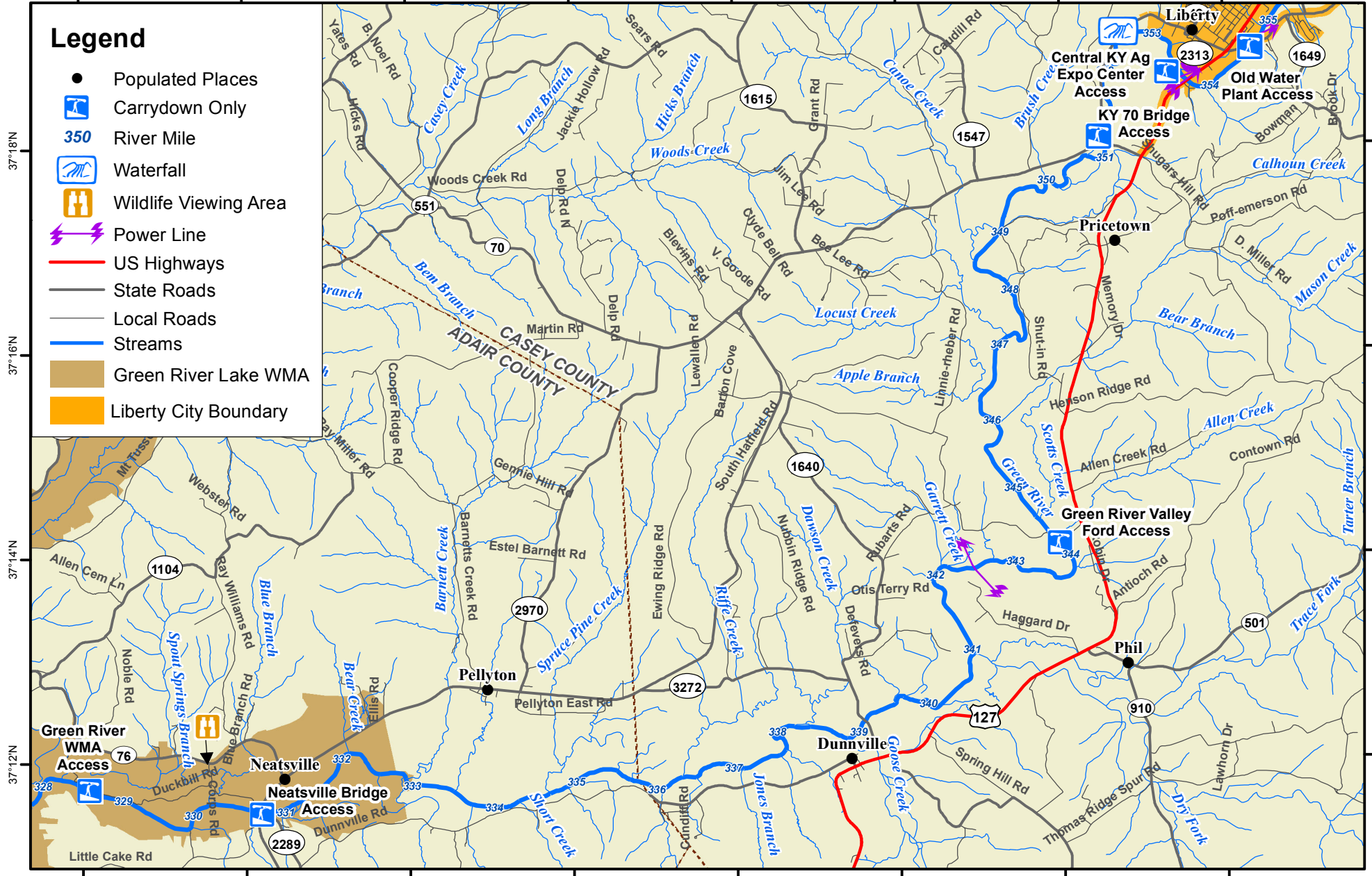


Blue Water Trails: Green River Above the Lake

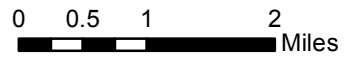
85°10'W 85°8'W 85°6'W 85°4'W 85°2'W 85°0'W 84°58'W 84°56'W

Legend

- Populated Places
- Carrydown Only
- 350 River Mile
- Waterfall
- Wildlife Viewing Area
- Power Line
- US Highways
- State Roads
- Local Roads
- Streams
- Green River Lake WMA
- Liberty City Boundary



Ramp to Ramp Distances	
Old Water Plant Access to Central KY Ag Expo Ctr. Access	= 1.25m
Central KY Ag Expo Ctr. Access to KY 70 Bridge Access	= 2.4m
KY 70 Bridge Access to Green River Valley Ford Access	= 7.25m
Green River Valley Ford Access to Neatsville Bridge Access	= 13.3m
Neatsville Bridge Access to Green River WMA Access	= 2.2m



Map prepared by Kentucky Department of Fish & Wildlife Resources
 Publication Date: July 3rd, 2014



NOTICE TO BOATERS:

Public access to the Green River is at the following locations: Old Water Plant Access, Central KY Ag Expo Center Access, KY 70 Bridge Access, Green River Valley Ford Access, Neatsville Bridge Access, and Green River WMA Access.