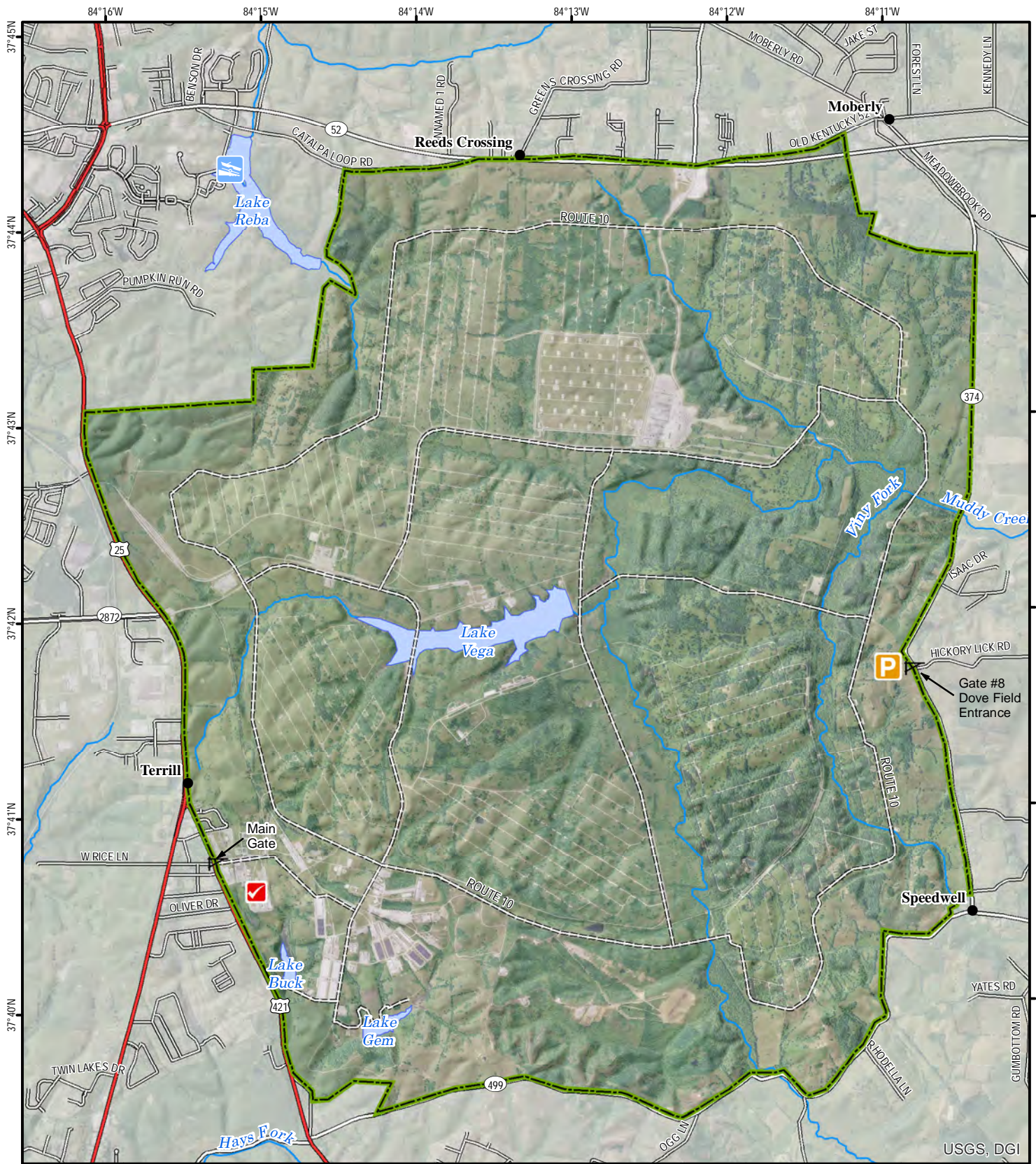


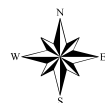


Blue Grass Army Depot



A map legend and additional information are provided on PDF pages that accompany this map.

Publication Date: 11/10/2016
Imagery from Farm Service Agency 2016



0 0.25 0.5 0.75 1 Mile

Map Scale 1:50,000



Note to Map Users

Map prepared by Kentucky Department of Fish & Wildlife Resources (KDFWR). Although KDFWR strives for accuracy, data used to create this map are from a variety of sources and dates; as such, KDFWR makes no representations regarding the accuracy or fitness for use of the information furnished herein.

Blue Grass Army Depot Information

Public Hunting Area Location



Regional Locator



Directions & Description:

Blue Grass Army Depot is located 4.5 miles south of Richmond on US 421. The landscape is rolling terrain with open fields and some woodlands along streams and other low areas.

NOTE: This is an active military reservation. Access is strictly controlled and rigidly enforced; special hunting regulations apply. The dove hunt is by lottery drawing only. Two lakes are available for fishing.

To obtain access to this facility for hunting or fishing a National Crime Information Center background check is required.

For more information, contact Blue Grass Army Depot, Attn: Natural Resource Specialist, Building S-14, 431 Battlefield Memorial Hwy, Richmond, KY 40475. This property is owned by the U.S. Army.

Online Resources

Public Hunting Area users must abide by the Kentucky hunting, trapping, and fishing regulations. It is incumbent on persons using Public Hunting Areas to become familiar with these regulations. Kentucky Department of Fish & Wildlife Resources provides these regulations on our Web site at fw.ky.gov or by calling 1-800-858-1549.

WMA Overview

Location & Size: Madison County, 14,517 acres

Contact: Nathan White at 859-779-6651 between hours of 6:30am and 5:00pm Monday-Thursday or via email at Nathan.matthew.white@us.army.mil

Elevation: minimum 850 feet, maximum 1040 feet.

Entrance GPS coordinates: Latitude N 37.69498, Longitude W -84.18103

Area Habitat: mostly open land: open land 53%, forest 46%, wetland 0%, open water 1%.

Wildlife Management Area Map Notes & Legend

NOTE TO MAP USERS:

For most WMA maps the landscape is depicted using a combination of elevation contours, hillshading and a green tint indicating woodland areas that is derived from satellite imagery. On WMAs that are relatively small or have a history of surface mining aerial photography is used.

WMA Map Legend

	WMA Office		WMA Boundary		Populated Place
	Information Kiosk		Aerial photograph		Kentucky Boundary
	Check station		Other Public Hunting Areas		Interstate Highway
	Mobility-impaired Hunting Blind		Area Off Limits		Kentucky Parkway
	Trailhead		No Hunting		U.S. Highway
	Horseback Trailhead		Seasonally Restricted Access		State Highway
	Parking Lot		Mobility Impaired Hunting Area		Local Road
	Picnic Area		Primitive Hunting Only		Forest Service Road
	Restrooms		Foot Traffic Only		Active Railroad
	Wildlife Viewing Site		Open Water		Abandoned Railroad
	Interpretive Site		Wetland		Federal Recreation Trail
	Retriever Training Site		Woodland		WMA Road
	Gate				WMA Foot Trail
	Campground				WMA Horse Trail
	Cemetery				Gas Pipeline
	Corps of Engineers Office				Powerline
	Waterfowl Blind				Rivers and Streams
	Shooting Range				Dam
	Established Bank Access				Trout Waters
	Fishing Pier				Elevation Contour
	Carrydown Launch				
	Small Boat Ramp				
	Large Boat Ramp				
	State Park Office				