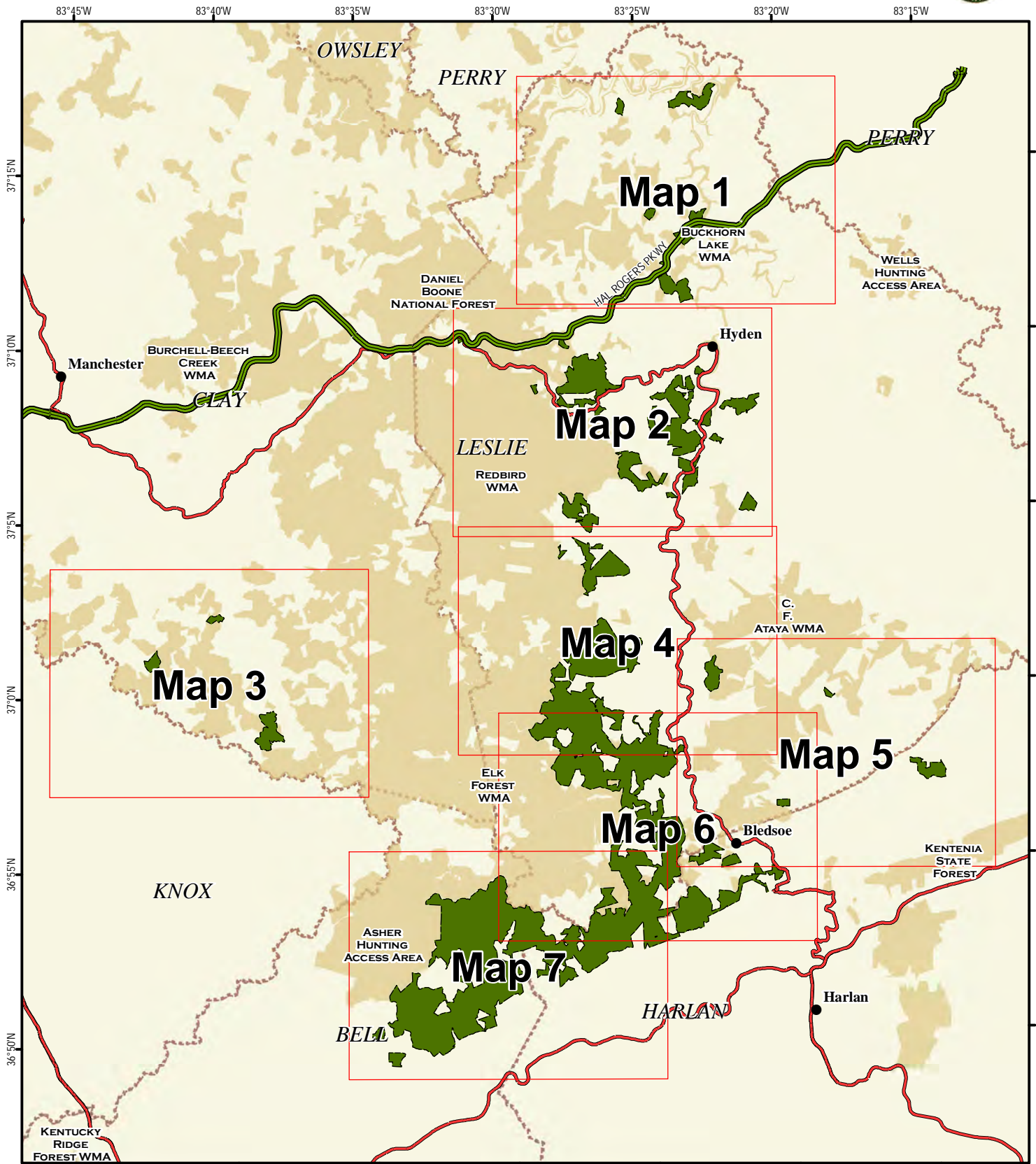


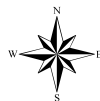
Boone Forestlands Wildlife Management Area Index Map

Elk Forest WMA appears on this map



A map legend and additional information are provided on PDF pages that accompany this map.

Publication Date: 4/6/2020



0 1 2 3 4 5 Mile

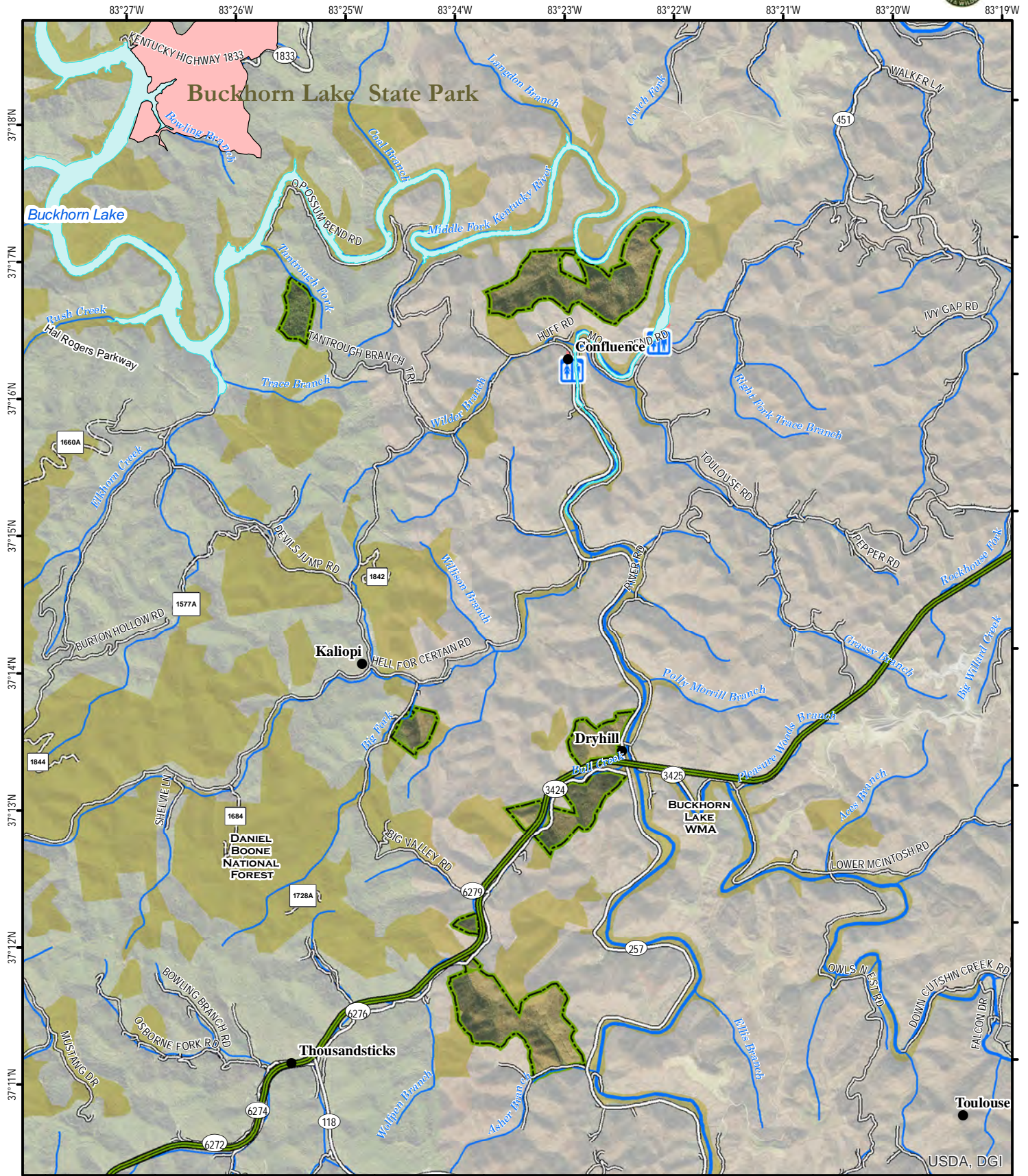
Scale 1:280,000



Note to Map Users

Map prepared by Kentucky Department of Fish & Wildlife Resources (KDFWR). Although KDFWR strives for accuracy, data used to create this map are from a variety of sources and dates; as such, KDFWR makes no representations regarding the accuracy or fitness for use of the information furnished herein.

Boone Forestlands Wildlife Management Area Map 1



A map legend and additional information are provided on PDF pages that accompany this map.

Publication Date: 9/24/2019
Imagery from Farm Service Agency 2018



See Map 2

Note to Map Users

Map prepared by Kentucky Department of Fish & Wildlife Resources (KDFWR). Although KDFWR strives for accuracy, data used to create this map are from a variety of sources and dates; as such, KDFWR makes no representations regarding the accuracy or fitness for use of the information furnished herein.



1:70,000



This map shows the location of Begley ATV Park, highlighted in red, within the West Virginia state park system. The park is situated in the central-eastern part of the state, near the town of Hyden. Key geographical features include the Daniel Boone National Forest to the north and west, and the Redbird Wildlife Management Area to the southwest. Major roads shown include Hal Rogers Parkway (US-406) and US-406. The map also depicts several creeks and rivers, such as the Bobs Fork, Hyden River, and the Big Middle Fork. Other towns and locations marked include Bobs Fork, Hyden, Wendover, Stinnett, and Hoskinson. The map includes a coordinate grid with latitude and longitude markings.

0 0.5 1 1.5 2 Mile

UNBRIDLED
KY
ADVENTURE



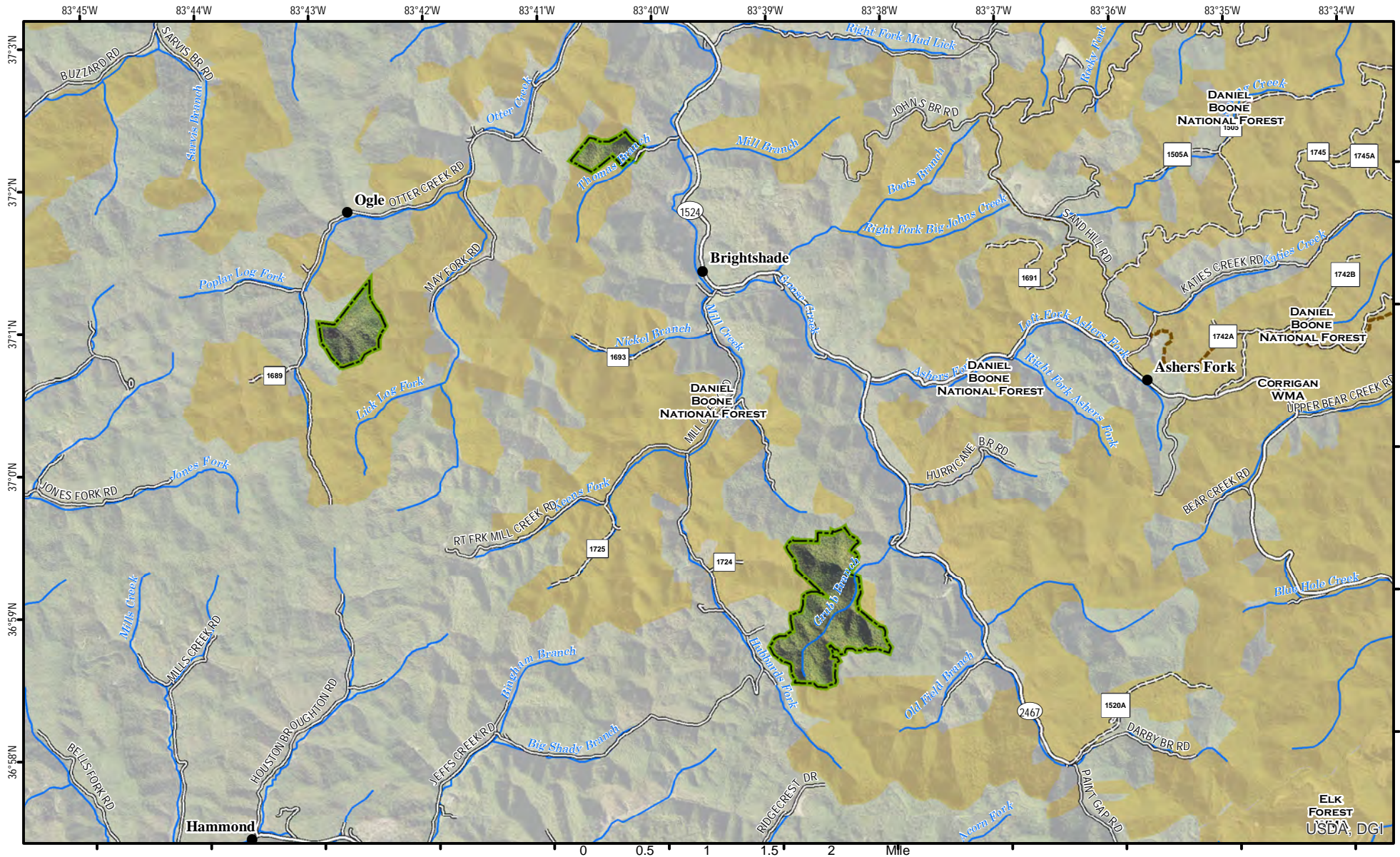
Note to Map Users

Map prepared by Kentucky Department of Fish & Wildlife Resources (KDFWR). Although KDFWR strives for accuracy, data used to create this map are from a variety of sources and dates; as such, KDFWR makes no representations regarding the accuracy or fitness for use of the information furnished herein.

Boone Forestlands Wildlife Management Area Map 3



Elk Forest WMA appears on this map



See adjoining Map 4

A map legend and additional information are provided on PDF pages that accompany this map.

Publication Date: 9/24/2019
Imagery from Farm Service Agency 2018



Scale 1:70,000



Note to Map Users

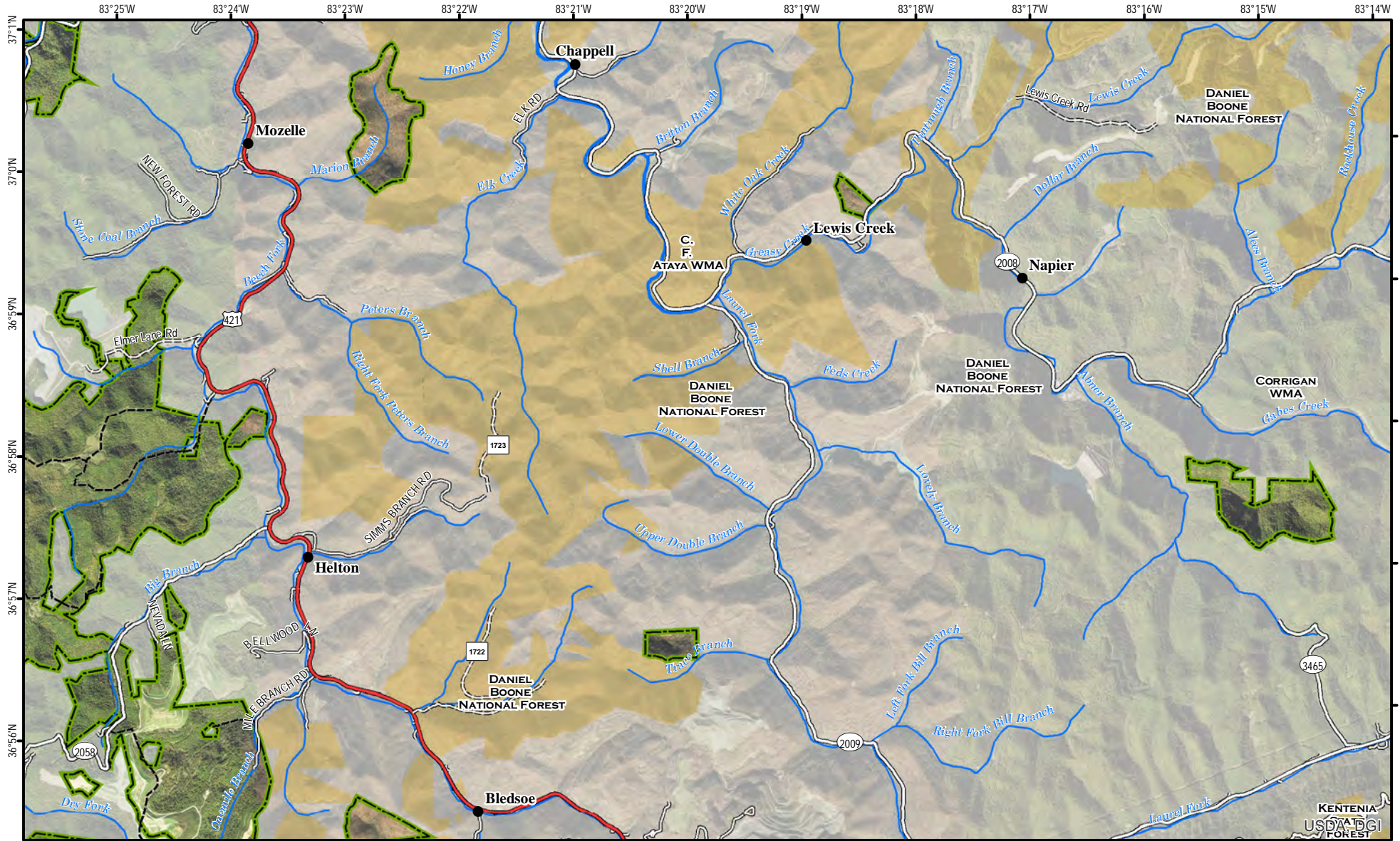
Map prepared by Kentucky Department of Fish & Wildlife Resources (KDFWR). Although KDFWR strives for accuracy, data used to create this map are from a variety of sources and dates; as such, KDFWR makes no representations regarding the accuracy or fitness for use of the information furnished herein.

Boone Forestlands Wildlife Management Area Map 5



Elk Forest WMA appears on this map

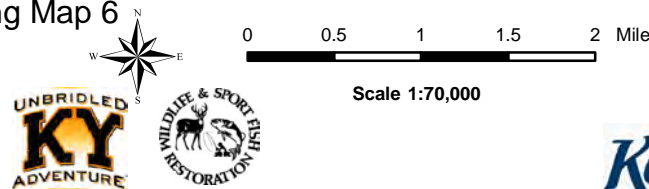
See adjoining maps 4 & 6



See adjoining Map 6

A map legend and additional information are provided on PDF pages that accompany this map.

Publication Date: 4/6/2020
Imagery from Farm Service Agency 2018



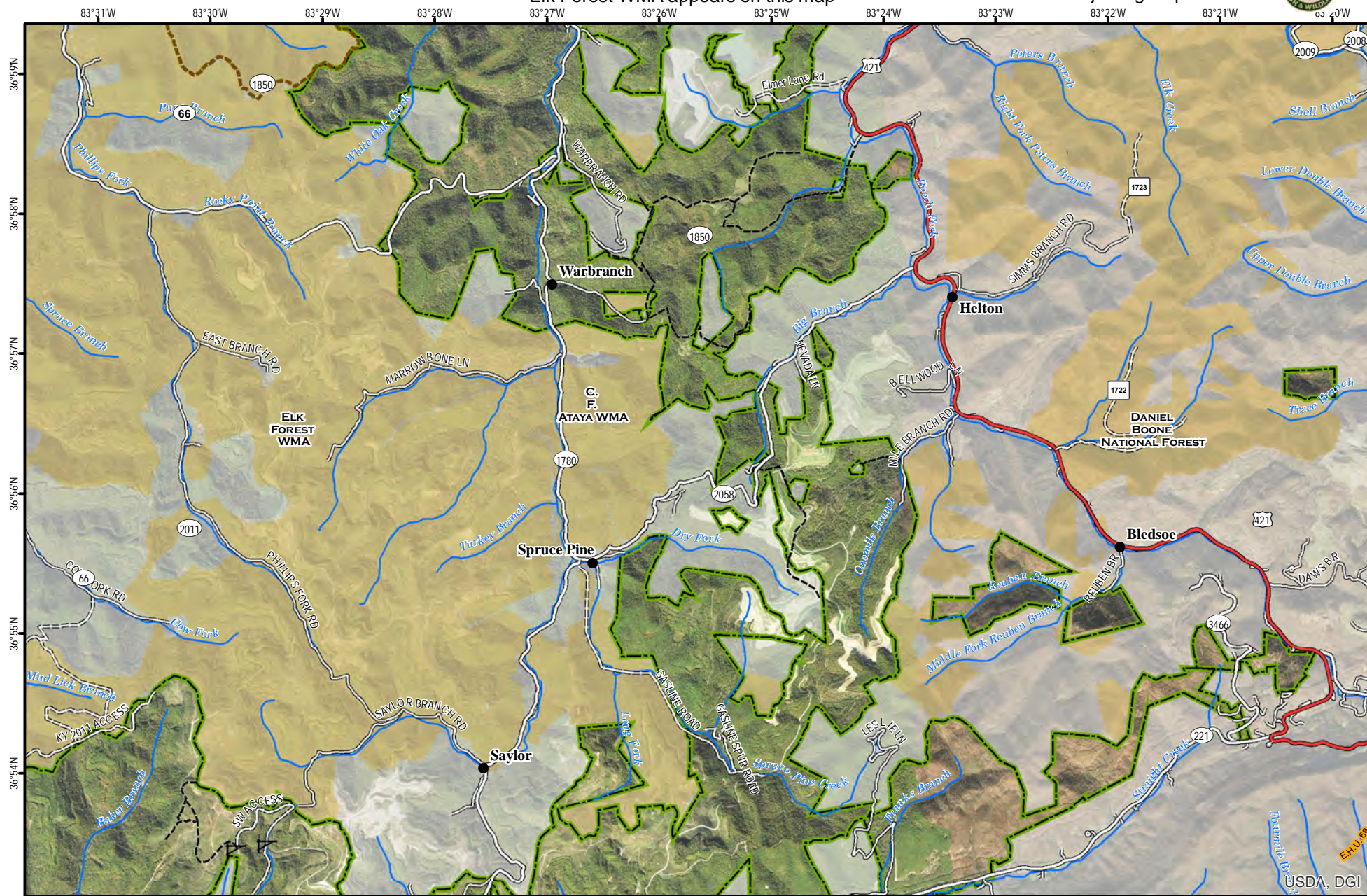
Note to Map Users

Map prepared by Kentucky Department of Fish & Wildlife Resources (KDFWR). Although KDFWR strives for accuracy, data used to create this map are from a variety of sources and dates; as such, KDFWR makes no representations regarding the accuracy or fitness for use of the information furnished herein.

Boone Forestlands Wildlife Management Area Map 6

Elk Forest WMA appears on this map

See adjoining Map 4



See adjoining Map 5

See adjoining Map 7

A map legend and additional information are provided on PDF pages that accompany this map.

Publication Date: 4/6/2020
Imagery from Farm Service Agency 2018



0 0.5 1 1.5 2 Mile
Scale

1:70,000



Note to Map Users
Map prepared by Kentucky Department of Fish & Wildlife Resources (KDFWR). Although KDFWR strives for accuracy, data used to create this map are from a variety of sources and dates; as such, KDFWR makes no representations regarding the accuracy or fitness for use of the information furnished herein.

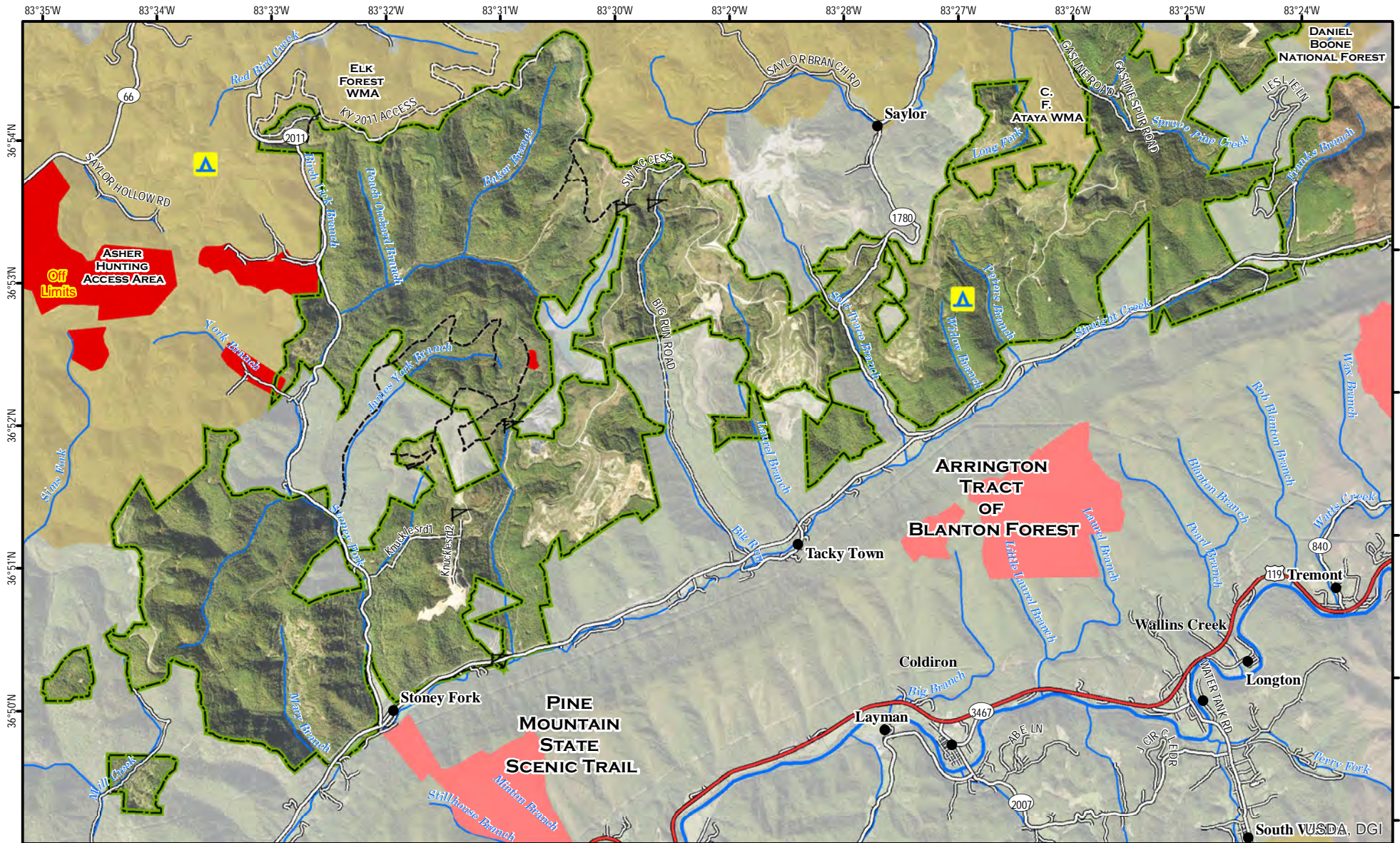
USDA, DGI

Boone Forestlands Wildlife Management Area Map 7



Elk Forest WMA appears on this map

See adjoining Map 6



A map legend and additional information are provided on PDF pages that accompany this map.

Publication Date: 9/25/2019
Imagery from Farm Service Agency 2018



0 0.5 1 1.5 2 Mile

Scale 1:70,000

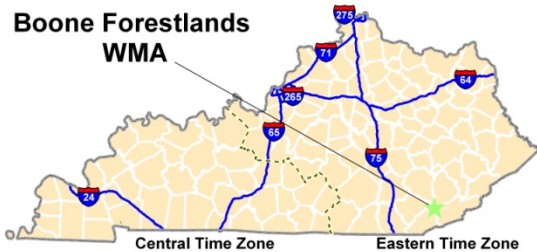


Note to Map Users

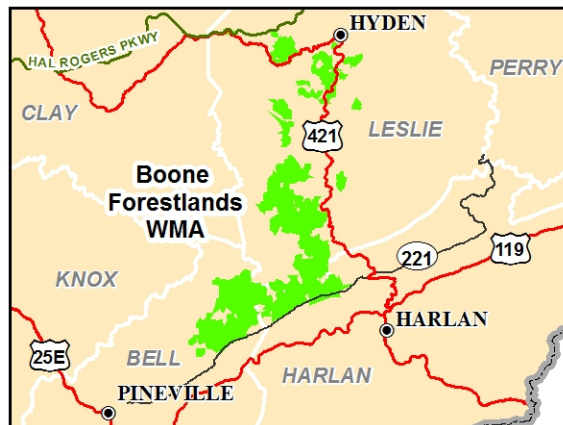
Map prepared by Kentucky Department of Fish & Wildlife Resources (KDFWR). Although KDFWR strives for accuracy, data used to create this map are from a variety of sources and dates; as such, KDFWR makes no representations regarding the accuracy or fitness for use of the information furnished herein.

Boone Forestlands WMA Information

Public Hunting Area Location



Regional Locator



Directions & Description:

Boone Forestlands WMA consists of many tracts in 4 different counties. The tracts are bounded in general to the north by the Hal Rogers PKWY and on the south by KY 221 along the base of Pine Mountain, to the west by KY 66, and US 421 to the east. The largest blocks by county are in southern Leslie, eastern Bell, and northern Harlan. Several additional tracts are located southwest of Hyden in Leslie County.

Boone Forestlands WMA is the result of a cooperative agreement between the owner, Boone Forestlands, LLC and the Kentucky Department of Fish and Wildlife Resources. The area consists of reclaimed surface mined and forested land located in several disjointed tracts. Public should be aware that active surface mine sites, deep mines and the coal washing facility are Off-limits. The majority of this property is found within Elk Hunting Unit 3, but smaller sections are located in units 2 and 4. Please refer to the elk portion of our website.

Online Resources

Public Hunting Area users must abide by the Kentucky hunting, trapping, and fishing regulations. It is incumbent on persons using Public Hunting Areas to become familiar with these regulations. Kentucky Department of Fish & Wildlife Resources provides these regulations on our Web site at fw.ky.gov or by calling 1-800-858-1549.

WMA Overview

Location & Size: Bell, Clay, Harlan & Leslie counties, 31,668 acres.

Contact: Wes Hodges, (606) 654-2533

Elevation: minimum 1113 feet, maximum 2582 feet.

Entrance GPS coordinates: Latitude N 36.88175, Longitude W -83.4971


Area Habitat: mostly forest: open land 21%, forest 79%, wetland 0%, open water 0%

Wildlife Management Area Map Notes & Legend

NOTE TO MAP USERS:

For most WMA maps the landscape is depicted using a combination of elevation contours, hillshading and a green tint indicating woodland areas that is derived from satellite imagery. On WMAs that are relatively small or have a history of surface mining aerial photography is used.

WMA Map Legend

	WMA Office		WMA Boundary		Populated Place
	Information Kiosk		Aerial photograph		Kentucky Boundary
	Check station		Other Public Hunting Areas		Interstate Highway
	Mobility-impaired Hunting Blind		Area Off Limits		Kentucky Parkway
	Trailhead		No Hunting		U.S. Highway
	Horseback Trailhead		Seasonally Restricted Access		State Highway
	Parking Lot		Mobility Impaired Hunting Area		Local Road
	Picnic Area		Primitive Hunting Only		Forest Service Road
	Restrooms		Foot Traffic Only		Active Railroad
	Wildlife Viewing Site		Open Water		Abandoned Railroad
	Interpretive Site		Wetland		Federal Recreation Trail
	Retriever Training Site		Woodland		WMA Road
	Gate				WMA Foot Trail
	Campground				WMA Horse Trail
	Cemetery				Gas Pipeline
	Corps of Engineers Office				Powerline
	Waterfowl Blind				Rivers and Streams
	Shooting Range				Dam
	Established Bank Access				Trout Waters
	Fishing Pier				Elevation Contour
	Carrydown Launch				
	Small Boat Ramp				
	Large Boat Ramp				
	State Park Office				