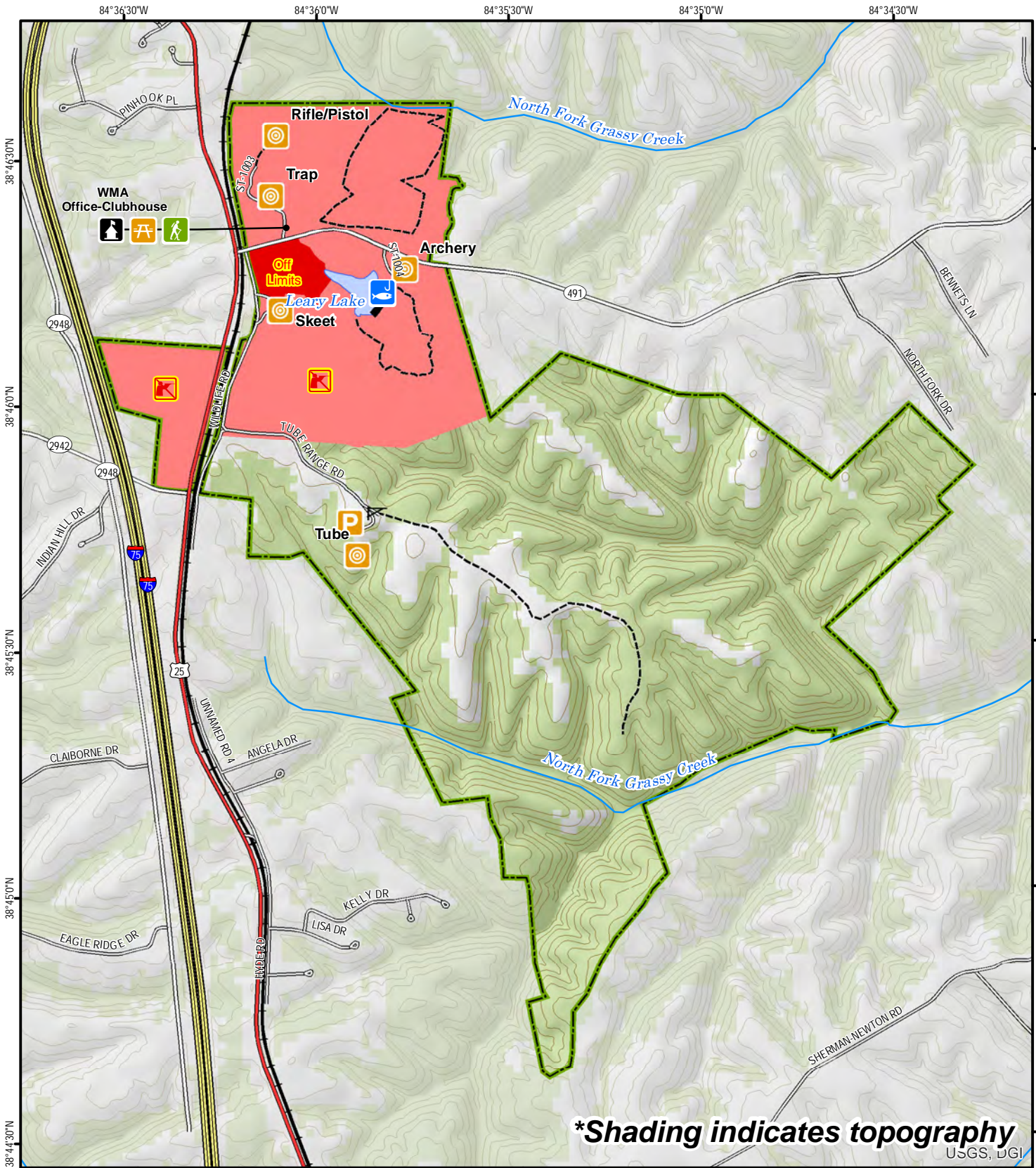


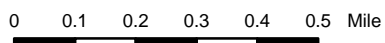
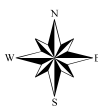
Curtis Gates Lloyd Wildlife Management Area



***Shading indicates topography**
USGS, UGI

A map legend and additional information are provided on PDF pages that accompany this map.

Publication Date: 11/22/2016
Land Classification from National Land Cover Database 2011



Map Scale 1:20,000
Contour interval: 20 feet



Note to Map Users

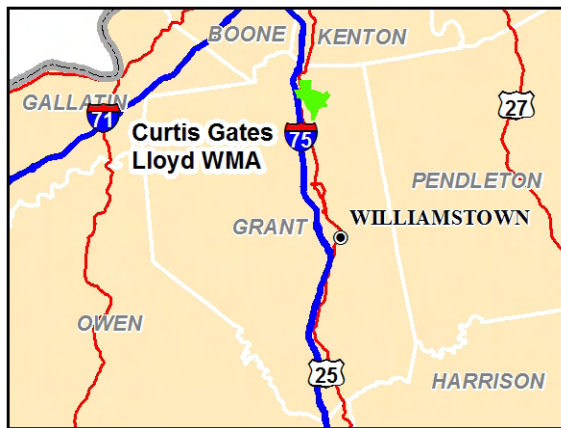
Map prepared by Kentucky Department of Fish & Wildlife Resources (KDFWR). Although KDFWR strives for accuracy, data used to create this map are from a variety of sources and dates; as such, KDFWR makes no representations regarding the accuracy or fitness for use of the information furnished herein.

Curtis Gates Lloyd WMA Information

Public Hunting Area Location



Regional Locator



Directions & Description:

One-half mile southeast of Crittenden; from I-75 take Crittenden exit, follow US 25 south to left turn across railroad tracks to area. Level to rolling terrain with some steep hills, fields, woods. Nature trail through old hardwoods, one of state's oldest forest stands.

Public shooting range (for single projectile firearms only; no shotshells or pistols allowed) located off Wildlife Road open Monday-Saturday 9:00 AM-sunset & Sundays noon-sunset. Public Archery range open during daylight hours. Trap, Skeet and Rifle/Pistol Range open to the public only during scheduled times. Please check online calendar or call Area office for closures, events, and more info.

Universal access to small fishing lake. Adm. Bldg. may be used by clubs. Please call only 8 a.m. to 4:30 p.m. Mon-Fri., Eastern. Fishing lakes, campgrounds nearby.

Owned by Kentucky Department of Fish and Wildlife Resources.

Online Resources

Public Hunting Area users must abide by the Kentucky hunting, trapping, and fishing regulations. It is incumbent on persons using Public Hunting Areas to become familiar with these regulations. Kentucky Department of Fish & Wildlife Resources provides these regulations on our Web site at fw.ky.gov or by calling 1-800-858-1549.

WMA Overview

Location & Size: Grant County, 1,105 acres.

Contact: (859) 428-2262

Elevation: minimum 720 feet, maximum 943 feet.

Entrance GPS coordinates: Latitude N 38.77309,
Longitude W -84.6013




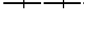

Area Habitat: mostly forest: open land 17%, forest 83%, wetland 0%, open water 0%

Wildlife Management Area Map Notes & Legend

NOTE TO MAP USERS:

For most WMA maps the landscape is depicted using a combination of elevation contours, hillshading and a green tint indicating woodland areas that is derived from satellite imagery. On WMAs that are relatively small or have a history of surface mining aerial photography is used.

WMA Map Legend

	WMA Office		WMA Boundary		Populated Place
	Information Kiosk		Aerial photograph		Kentucky Boundary
	Check station		Other Public Hunting Areas		Interstate Highway
	Mobility-impaired Hunting Blind		Area Off Limits		Kentucky Parkway
	Trailhead		No Hunting		U.S. Highway
	Horseback Trailhead		Seasonally Restricted Access		State Highway
	Parking Lot		Mobility Impaired Hunting Area		Local Road
	Picnic Area		Primitive Hunting Only		Forest Service Road
	Restrooms		Foot Traffic Only		Active Railroad
	Wildlife Viewing Site		Open Water		Abandoned Railroad
	Interpretive Site		Wetland		Federal Recreation Trail
	Retriever Training Site		Woodland		WMA Road
	Gate				WMA Foot Trail
	Campground				WMA Horse Trail
	Cemetery				Gas Pipeline
	Corps of Engineers Office				Powerline
	Waterfowl Blind				Rivers and Streams
	Shooting Range				Dam
	Established Bank Access				Trout Waters
	Fishing Pier				Elevation Contour
	Carrydown Launch				
	Small Boat Ramp				
	Large Boat Ramp				
	State Park Office				