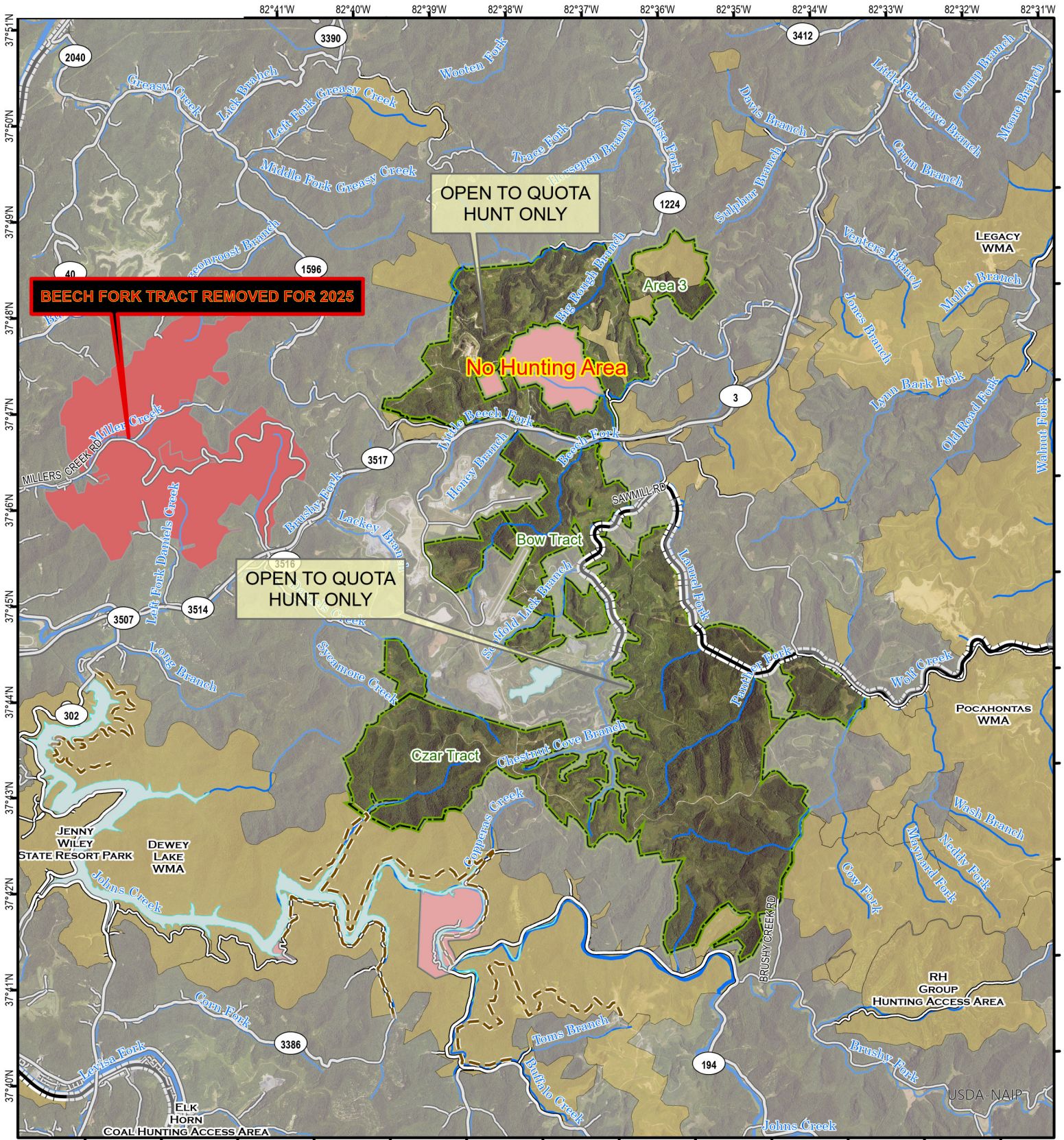
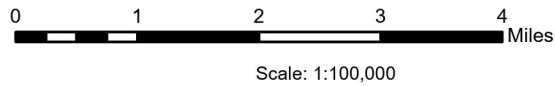


# Czar Hunting Access Area



A map legend and additional information are provided on PDF pages that accompany this map.  
 Publication Date: 4/10/2025  
 Imagery from Farm Service Agency 2022



### Note to Map Users

Map prepared by Kentucky Department of Fish & Wildlife Resources (KDFWR). Although KDFWR strives for accuracy, data used to create this map are from a variety of sources and dates; as such, KDFWR makes no representations regarding the accuracy or fitness for use of the information furnished herein.



# Czar Hunting Access Area Information

## Public Hunting Area Location



## Regional Locator



## Hunting Access Area Overview

**Location & Size:** Johnson, Martin, Floyd Counties, 15,090 acres.

**Contact:** Nathan Gregory (606) 780-0854

**Elevation:** minimum 680 feet, maximum 1520 feet.

**Entrance GPS coordinates:** Latitude N 37.75870, Longitude W -82.68898

**Area Habitat:** Open land 38%, forest 62%, wetland 0%, water < 1%

## Directions & Description:

From US 23 in Prestonsburg, travel 4.5 miles north, and turn right (east) onto HWY 3. Travel 6.6 miles to the Beech Tract. Millers Creek Road bisects this tract.

Habitat consists primarily of reclaimed surface-mined and forested land. Foot travel only off of area mine roads or behind locked gates. All users of the area must attend a training session. Off-limit areas are indicated on the map.

Please note that each tract has special restrictions. See below for tract specific restrictions:

**Bow Tract** Open for archery elk hunting only to persons who possess the appropriate elk hunting permit. Closed to all other hunting.

## Czar Tract and Area 3 Tract

- Portions are open during elk quota hunts to person who possess the appropriate elk hunting permit.
- Quota hunt for rabbit and spring turkey. Applicants must contact Mintha Jenkins via email ([Mintha@czarky.net](mailto:Mintha@czarky.net)) to apply for the quota hunts. - Closed to all other hunting.

Owned by Beech Fork Processing, Inc. This property is managed as a Regulated Area for elk hunting and is located in Elk Hunting Unit 6. Drawn elk hunters may apply to hunt this property during the Elk Hunting Unit and Regulated Area drawing. Please refer to the elk portion of our website. No ATV's, camping, horseback riding, or rock climbing is allowed on the area. The use of a hunting guide to

assist hunters during their hunt is not permitted on this property.

## Online Resources







Public Hunting Area users must abide by the Kentucky hunting, trapping, and fishing regulations. It is incumbent on persons using Public Hunting Areas to become familiar with these regulations. Kentucky Department of Fish & Wildlife Resources provides these regulations on our Web site at [fw.ky.gov](http://fw.ky.gov) or by calling 1-800-858-1549.

# Wildlife Management Area Map Notes & Legend

## NOTE TO MAP USERS:

For most WMA maps the landscape is depicted using a combination of elevation contours, hillshading and a green tint indicating woodland areas that is derived from satellite imagery. On WMAs that are relatively small or have a history of surface mining aerial photography is used.

## WMA Map Legend

	WMA Office		WMA Boundary		Populated Place
	Information Kiosk		Aerial photograph		Kentucky Boundary
	Check station		Other Public Hunting Areas		Interstate Highway
	Mobility-impaired Hunting Blind		Area Off Limits		Kentucky Parkway
	Trailhead		No Hunting		U.S. Highway
	Horseback Trailhead		Seasonally Restricted Access		State Highway
	Parking Lot		Mobility Impaired Hunting Area		Local Road
	Picnic Area		Primitive Hunting Only		Forest Service Road
	Restrooms		Foot Traffic Only		Active Railroad
	Wildlife Viewing Site		Open Water		Abandoned Railroad
	Interpretive Site		Wetland		Federal Recreation Trail
	Retriever Training Site		Woodland		WMA Road
	Gate				WMA Foot Trail
	Campground				WMA Horse Trail
	Cemetery				Gas Pipeline
	Corps of Engineers Office				Powerline
	Waterfowl Blind				Rivers and Streams
	Shooting Range				Dam
	Established Bank Access				Trout Waters
	Fishing Pier				Elevation Contour
	Carrydown Launch				
	Small Boat Ramp				
	Large Boat Ramp				
	State Park Office				