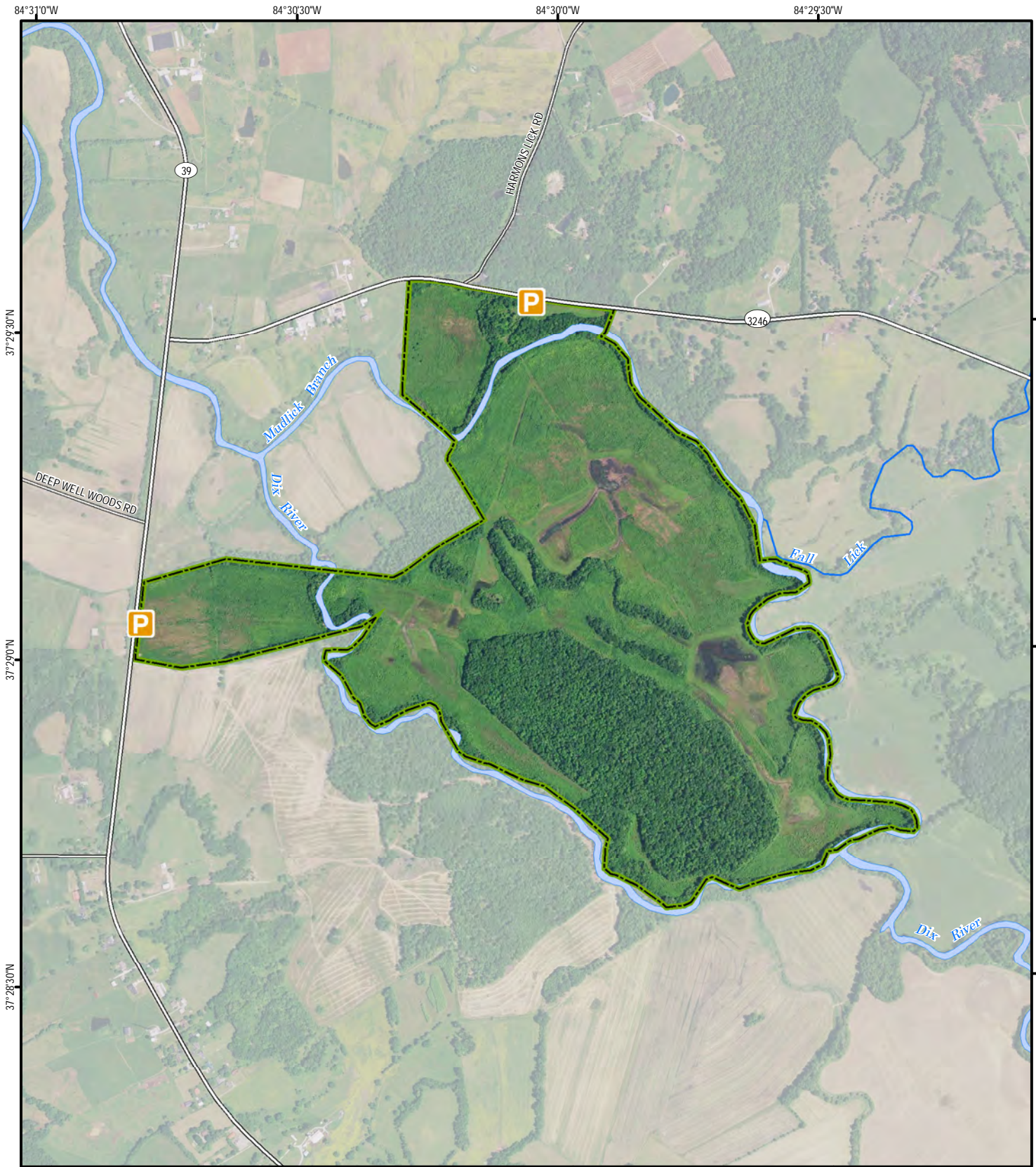
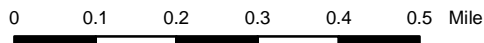
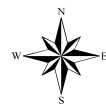


# Dix River Wildlife Management Area



A map legend and additional information are provided on PDF pages that accompany this map.

Publication Date: 11/10/2016  
Imagery from Farm Service Agency 2016



Map Scale 1:15,000



### Note to Map Users

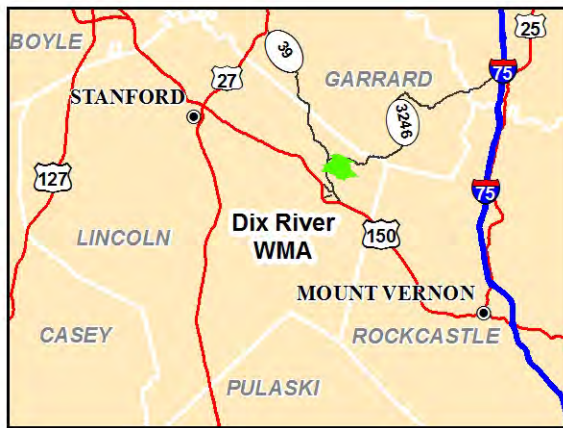
Map prepared by Kentucky Department of Fish & Wildlife Resources (KDFWR). Although KDFWR strives for accuracy, data used to create this map are from a variety of sources and dates; as such, KDFWR makes no representations regarding the accuracy or fitness for use of the information furnished herein.

# Dix River WMA Information

## Public Hunting Area Location



## Regional Locator



## Directions & Description:

From Stanford travel approximately 10 miles east on US 150; turn left on KY 39 and travel 1.75 miles to WMA on right; or turn right on KY 3246 (Falls Lick RD) and travel 2/3 mile to parking area on the right.

Directions from Mount Vernon – travel approximately 14 miles west on KY150; right on KY 39 for travel 1.75 miles to WMA on right; or turn right on KY 3246 (Falls Lick RD) and travel 2/3 mile to parking area on the right.

Dix River WMA is located in east central Lincoln County and consists of the 400 acres. The topography consists of flat bottomlands and the majority of the property is bounded by Dix River and Mud Lick Creek. Approximately 120 acres are forested and 280 acres are in an open condition. Elevations range from 850 to 880 feet above sea level. Good to moderate populations of squirrel, rabbits and songbirds exist on the area.

The area is open under statewide regulations for small game, turkey, and deer seasons with the exception of modern gun deer season. See the Fall Hunting and Trapping Guide for additional information concerning hunting seasons.

Owned by the Kentucky Department of Fish and Wildlife.

## Online Resources

Public Hunting Area users must abide by the Kentucky hunting, trapping, and fishing regulations. It is incumbent on persons using Public Hunting Areas to become familiar with these regulations. Kentucky Department of Fish & Wildlife Resources provides these regulations on our Web site at [fw.ky.gov](http://fw.ky.gov) or by calling 1-800-858-1549.

## WMA Overview

**Location & Size:** Lincoln County, 401 acres.

**Contact:** (270) 465-5039

**Elevation:** minimum 844 feet, maximum 880 feet.

**Entrance GPS coordinates:** Latitude N 37.49226, Longitude W -84.501

**Area Habitat:** mostly open land: open land 77%, forest 23%, wetland 0%, open water 0%.

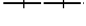


# Wildlife Management Area Map Notes & Legend

## NOTE TO MAP USERS:

For most WMA maps the landscape is depicted using a combination of elevation contours, hillshading and a green tint indicating woodland areas that is derived from satellite imagery. On WMAs that are relatively small or have a history of surface mining aerial photography is used.

## WMA Map Legend

	WMA Office		WMA Boundary		Populated Place
	Information Kiosk		Aerial photograph		Kentucky Boundary
	Check station		Other Public Hunting Areas		Interstate Highway
	Mobility-impaired Hunting Blind		Area Off Limits		Kentucky Parkway
	Trailhead		No Hunting		U.S. Highway
	Horseback Trailhead		Seasonally Restricted Access		State Highway
	Parking Lot		Mobility Impaired Hunting Area		Local Road
	Picnic Area		Primitive Hunting Only		Forest Service Road
	Restrooms		Foot Traffic Only		Active Railroad
	Wildlife Viewing Site		Open Water		Abandoned Railroad
	Interpretive Site		Wetland		Federal Recreation Trail
	Retriever Training Site		Woodland		WMA Road
	Gate				WMA Foot Trail
	Campground				WMA Horse Trail
	Cemetery				Gas Pipeline
	Corps of Engineers Office				Powerline
	Waterfowl Blind				Rivers and Streams
	Shooting Range				Dam
	Established Bank Access				Trout Waters
	Fishing Pier				Elevation Contour
	Carrydown Launch				
	Small Boat Ramp				
	Large Boat Ramp				
	State Park Office				