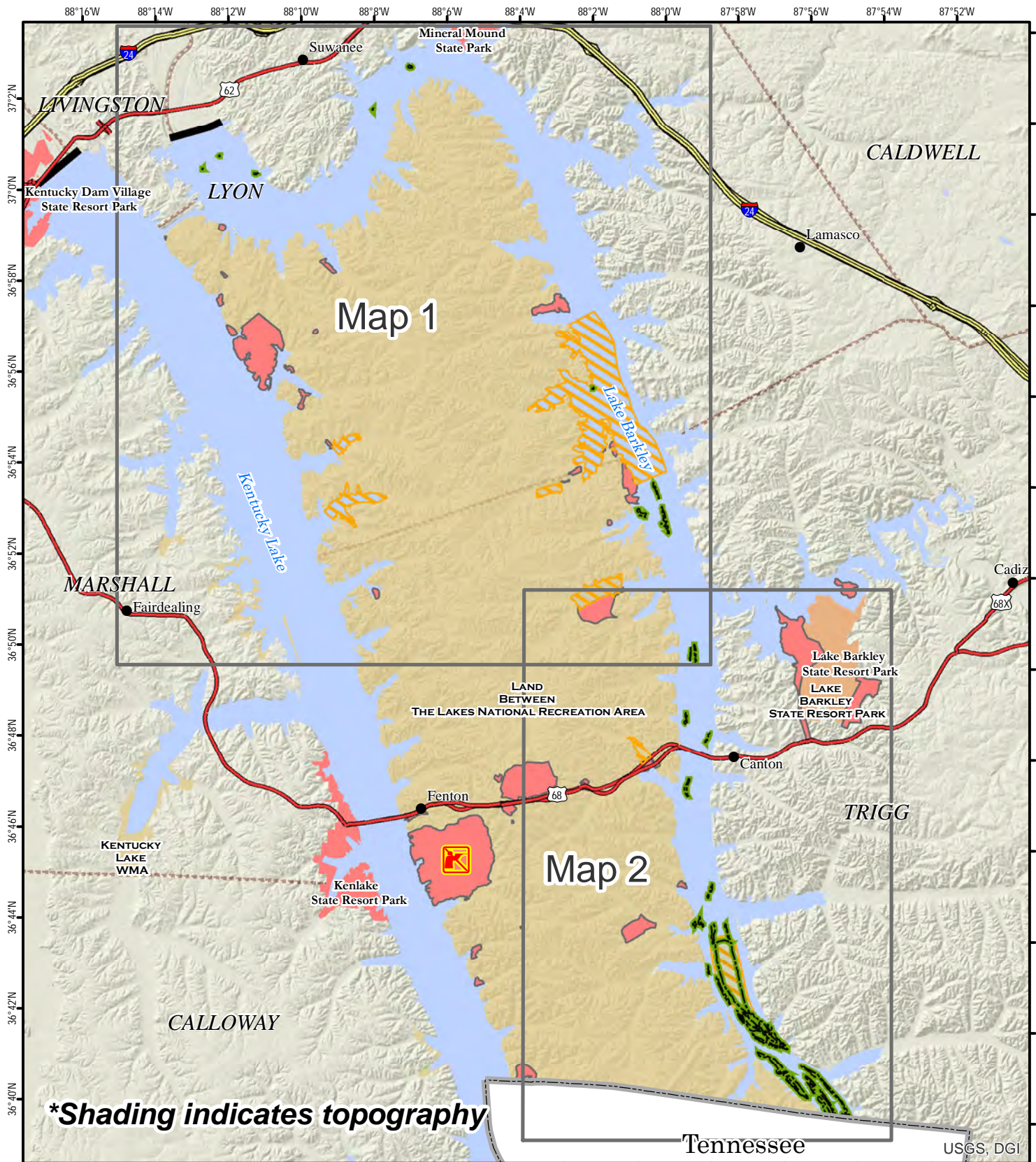


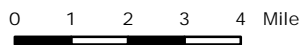


# Lake Barkley Wildlife Management Area Index Map



A map legend and additional information are provided on PDF pages that accompany this map.

Publication Date: 11/16/2016

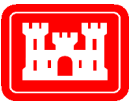


Scale 1:215,000

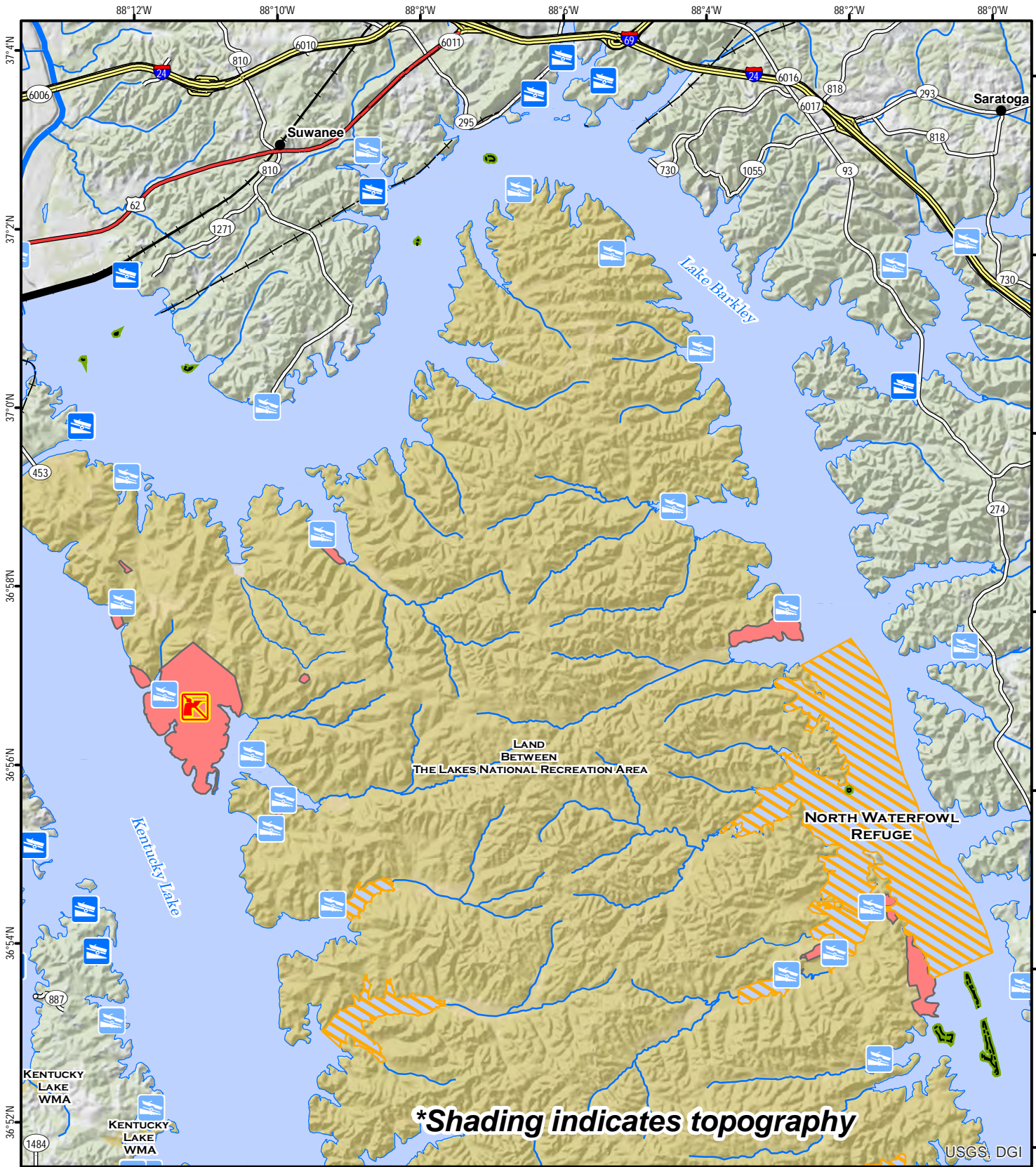
### Note to Map Users

Map prepared by Kentucky Department of Fish & Wildlife Resources (KDFWR). Although KDFWR strives for accuracy, data used to create this map are from a variety of sources and dates; as such, KDFWR makes no representations regarding the accuracy or fitness for use of the information furnished herein.



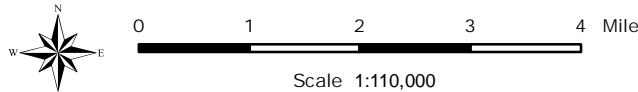


# Lake Barkley Wildlife Management Area Map 1



A map legend and additional information are provided on PDF pages that accompany this map.

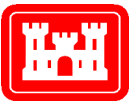
Publication Date: 11/16/2016  
Land Classification from National Land Cover Database 2011



See Map 2

Note to Map Users

Map prepared by Kentucky Department of Fish & Wildlife Resources (KDFWR). Although KDFWR strives for accuracy, data used to create this map are from a variety of sources and dates; as such, KDFWR makes no representations regarding the accuracy or fitness for use of the information furnished herein.

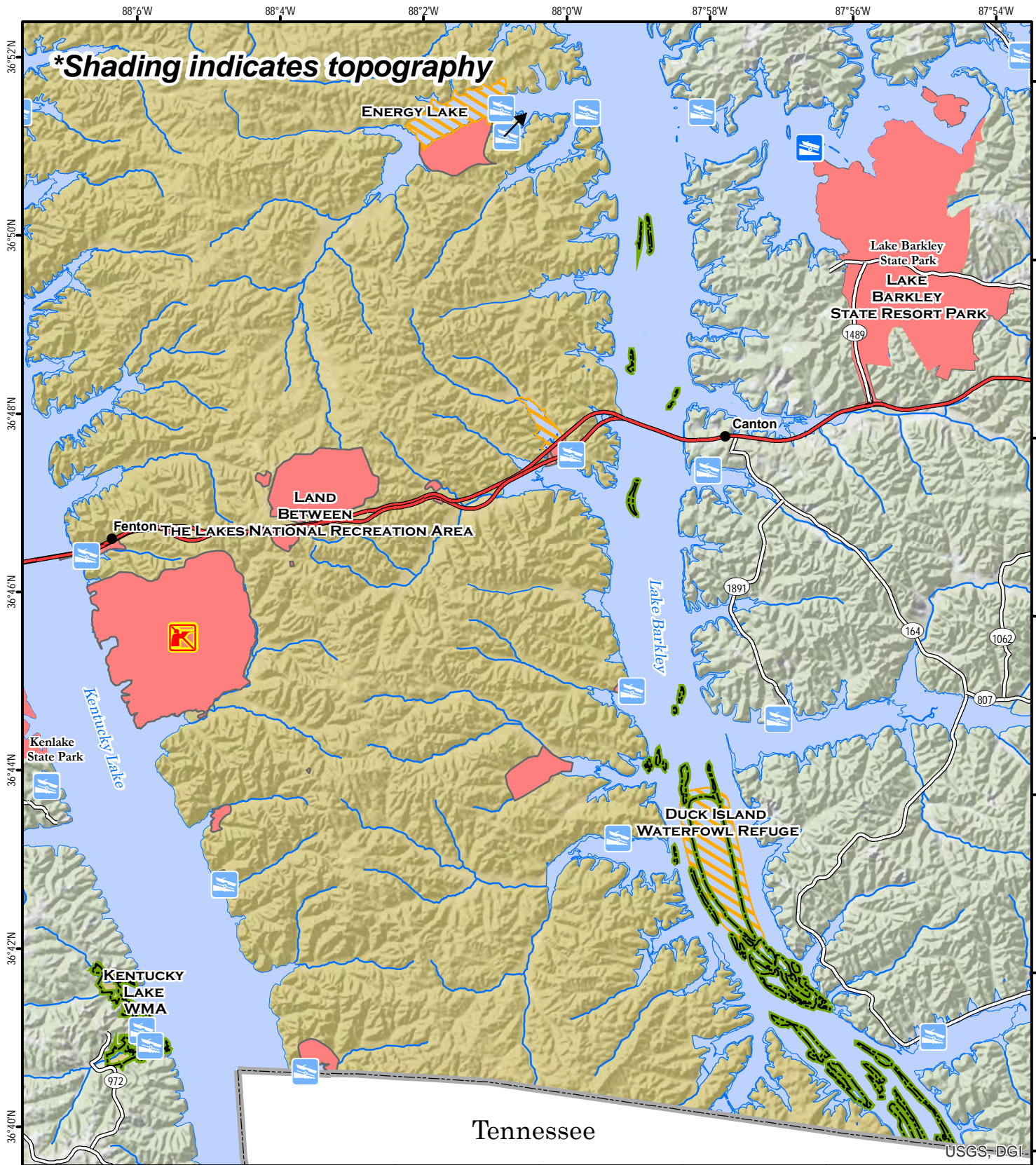


# Lake Barkley Wildlife Management Area

## Map 2



See Map 1



A map legend and additional information are provided on PDF pages that accompany this map.

Publication Date: 11/16/2016  
Land Classification from National Land Cover Database 2011



Scale 1:110,000

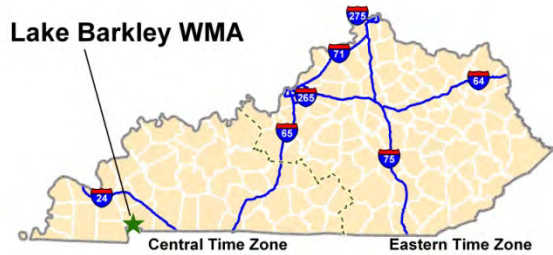


### Note to Map Users

Map prepared by Kentucky Department of Fish & Wildlife Resources (KDFWR). Although KDFWR strives for accuracy, data used to create this map are from a variety of sources and dates; as such, KDFWR makes no representations regarding the accuracy or fitness for use of the information furnished herein.

# Lake Barkley WMA Information

## Public Hunting Area Location



## Regional Locator



## WMA Overview

**Location & Size:** Trigg & Lyon counties. WMA is 907 acres, Lake Barkley is 39,496 acres.

**Contact:** (270) 753-6913

**Elevation:** minimum 358 feet, maximum 383 feet.

**Entrance GPS coordinates:** Latitude N 36.68742, Longitude W -87.90902

**Area Habitat:** mostly Open Water: open land 10%, forest 8%, wetland 27%, open water 55%

## Directions & Description:

WMA consist primarily of islands in Lake Barkley with Duck Island maintained as waterfowl refuge. Fishing, boating and other water-related sports.

The North Refuge is closed Nov. 1 – March 15 and Duck Island Refuge is closed Oct. 15 - March 15.

Lake Barkley WMA is owned by the U.S. Army Corps of Engineers.

## Online Resources

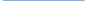
Public Hunting Area users must abide by the Kentucky hunting, trapping, and fishing regulations. It is incumbent on persons using Public Hunting Areas to become familiar with these regulations. Kentucky Department of Fish & Wildlife Resources provides these regulations on our Web site at [fw.ky.gov](http://fw.ky.gov) or by calling 1-800-858-1549.

# Wildlife Management Area Map Notes & Legend

## NOTE TO MAP USERS:

For most WMA maps the landscape is depicted using a combination of elevation contours, hillshading and a green tint indicating woodland areas that is derived from satellite imagery. On WMAs that are relatively small or have a history of surface mining aerial photography is used.

## WMA Map Legend

	WMA Office		WMA Boundary		Populated Place
	Information Kiosk		Aerial photograph		Kentucky Boundary
	Check station		Other Public Hunting Areas		Interstate Highway
	Mobility-impaired Hunting Blind		Area Off Limits		Kentucky Parkway
	Trailhead		No Hunting		U.S. Highway
	Horseback Trailhead		Seasonally Restricted Access		State Highway
	Parking Lot		Mobility Impaired Hunting Area		Local Road
	Picnic Area		Primitive Hunting Only		Forest Service Road
	Restrooms		Foot Traffic Only		Active Railroad
	Wildlife Viewing Site		Open Water		Abandoned Railroad
	Interpretive Site		Wetland		Federal Recreation Trail
	Retriever Training Site		Woodland		WMA Road
	Gate				WMA Foot Trail
	Campground				WMA Horse Trail
	Cemetery				Gas Pipeline
	Corps of Engineers Office				Powerline
	Waterfowl Blind				Rivers and Streams
	Shooting Range				Dam
	Established Bank Access				Trout Waters
	Fishing Pier				Elevation Contour
	Carrydown Launch				
	Small Boat Ramp				
	Large Boat Ramp				
	State Park Office				