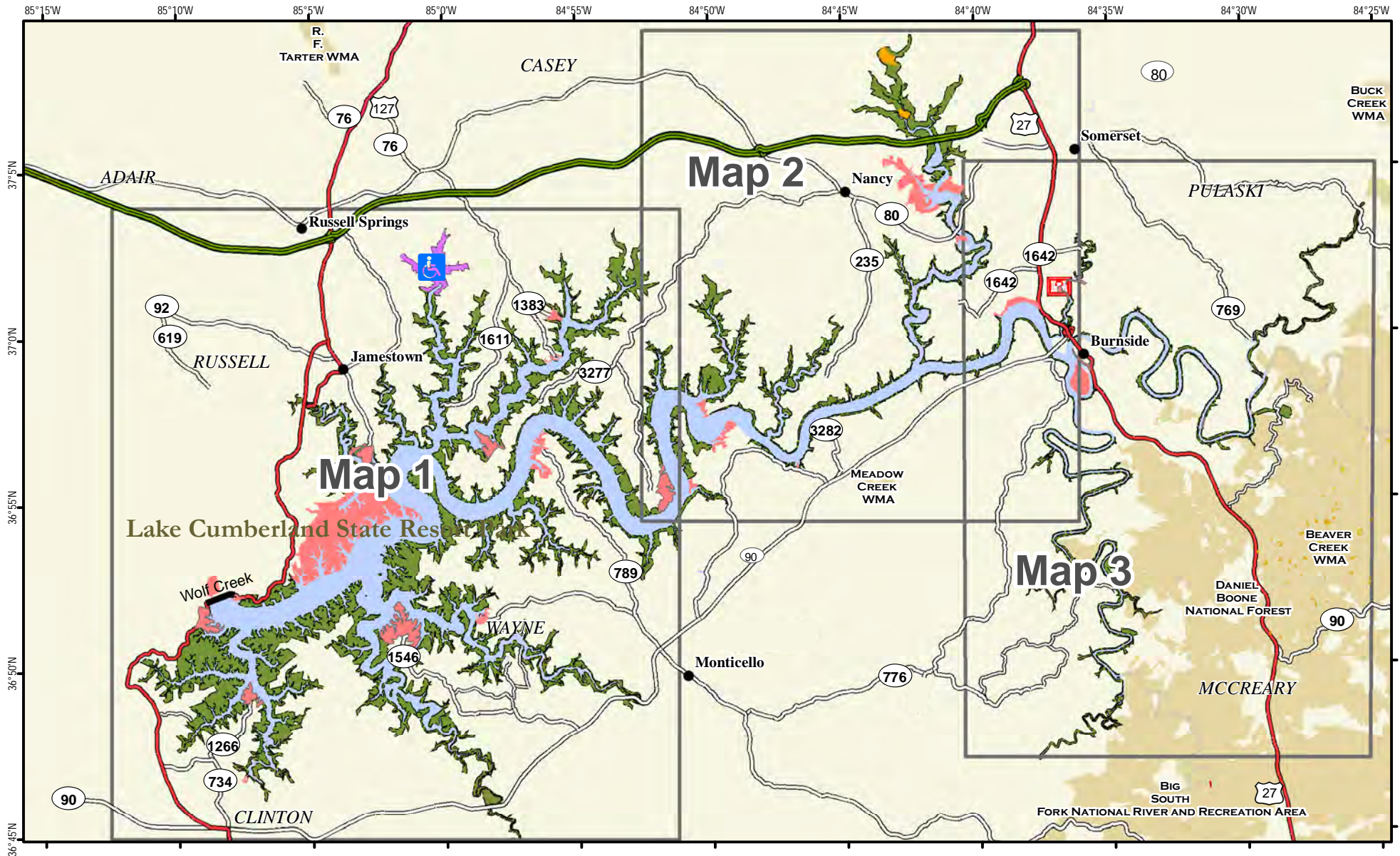


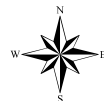


Lake Cumberland Wildlife Management Area Index Map



A map legend and additional information are provided on PDF pages that accompany this map.

Publication Date: 1/12/2018



0 1 2 3 4 5 Mile

Scale 1:300,000

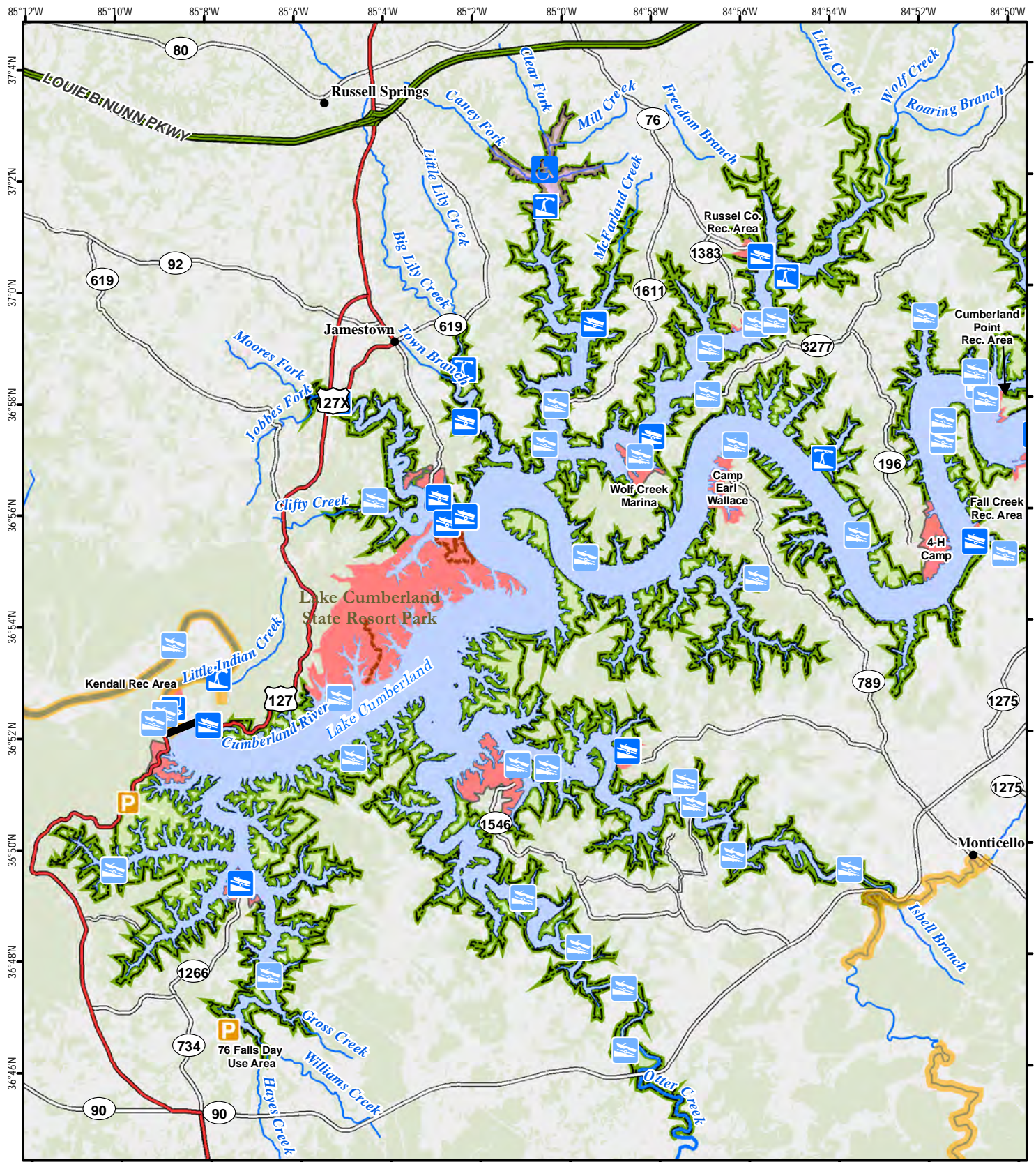


Note to Map Users

Map prepared by Kentucky Department of Fish & Wildlife Resources (KDFWR). Although KDFWR strives for accuracy, data used to create this map are from a variety of sources and dates; as such, KDFWR makes no representations regarding the accuracy or fitness for use of the information furnished herein.



Lake Cumberland Wildlife Management Area Map 1



See Map 2

A map legend and additional information are provided on PDF pages that accompany this map.

Publication Date: 1/12/2018
Land Classification from National Land Cover Database 2011



0 1 2 3 Mile
Scale 1:175,000



Note to Map Users

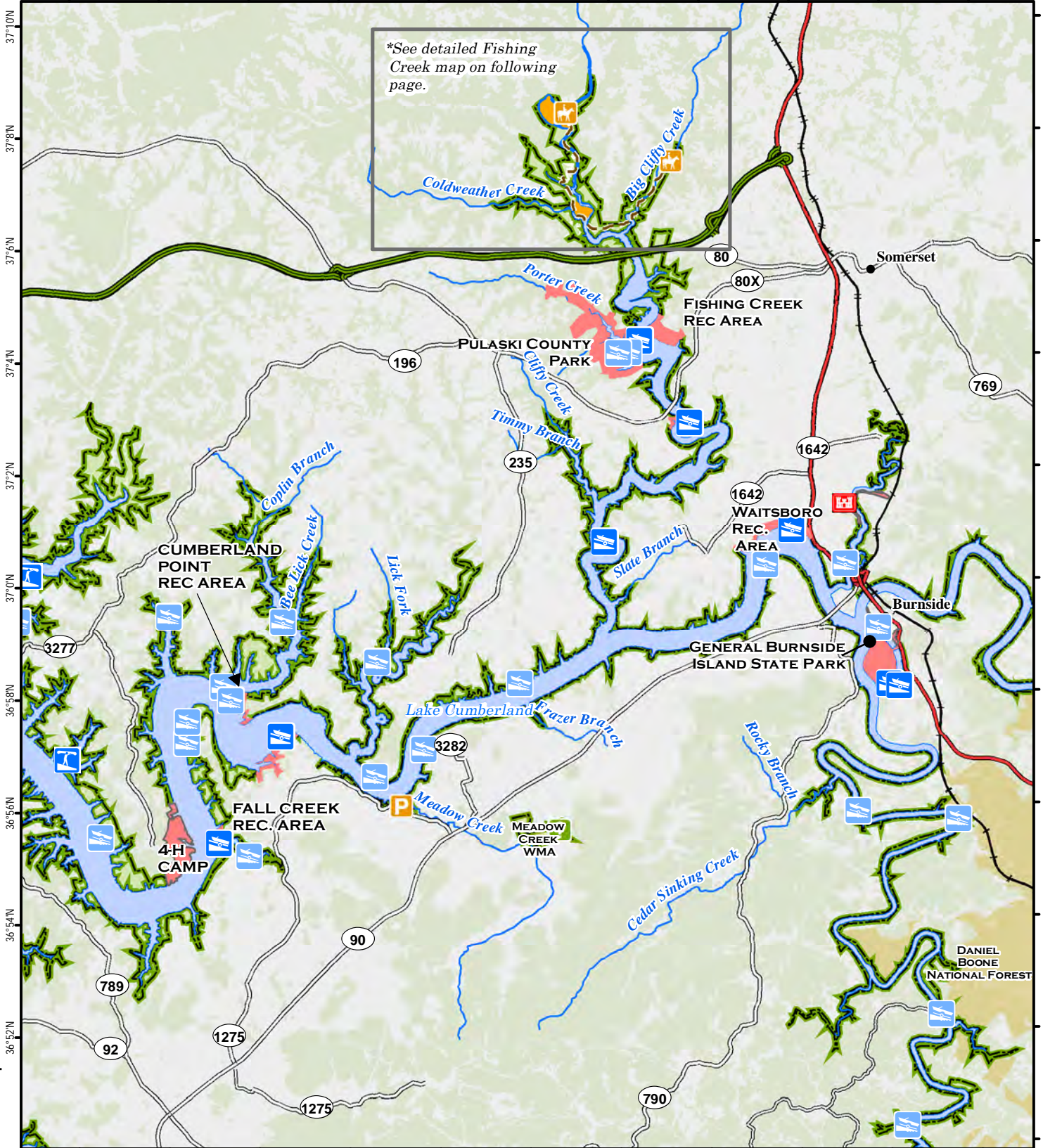
Map prepared by Kentucky Department of Fish & Wildlife Resources (KDFWR). Although KDFWR strives for accuracy, data used to create this map are from a variety of sources and dates; as such, KDFWR makes no representations regarding the accuracy or fitness for use of the information furnished herein.



Lake Cumberland Wildlife Management Area Map 2



84°54'W 84°52'W 84°50'W 84°48'W 84°46'W 84°44'W 84°42'W 84°40'W 84°38'W 84°36'W 84°34'W



See Map 1

See Map 3

A map legend and additional information are provided on PDF pages that accompany this map.

Publication Date: 1/12/2018
Land Classification from National Land Cover Database 2011



0 1 2 3 Mile

Scale 1:175,000

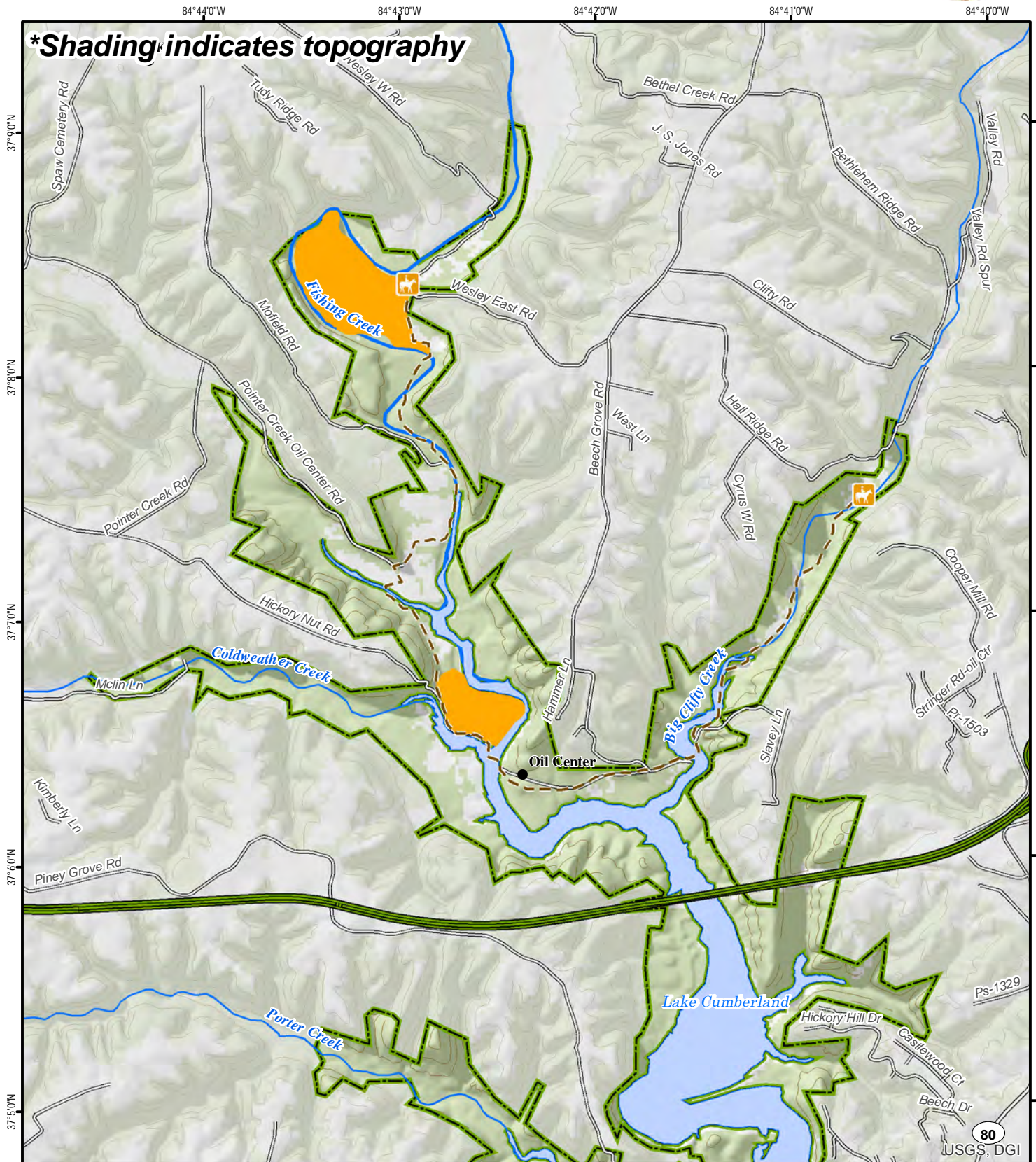


Note to Map Users

Map prepared by Kentucky Department of Fish & Wildlife Resources (KDFWR). Although KDFWR strives for accuracy, data used to create this map are from a variety of sources and dates; as such, KDFWR makes no representations regarding the accuracy or fitness for use of the information furnished herein.



Fishing Creek Area Lake Cumberland Wildlife Management Area



A map legend and additional information are provided on PDF pages that accompany this map.

Publication Date: 1/12/2018
Land Classification from National
Land Cover Database 2011



Scale 1:40,000

Contours: 100 ft

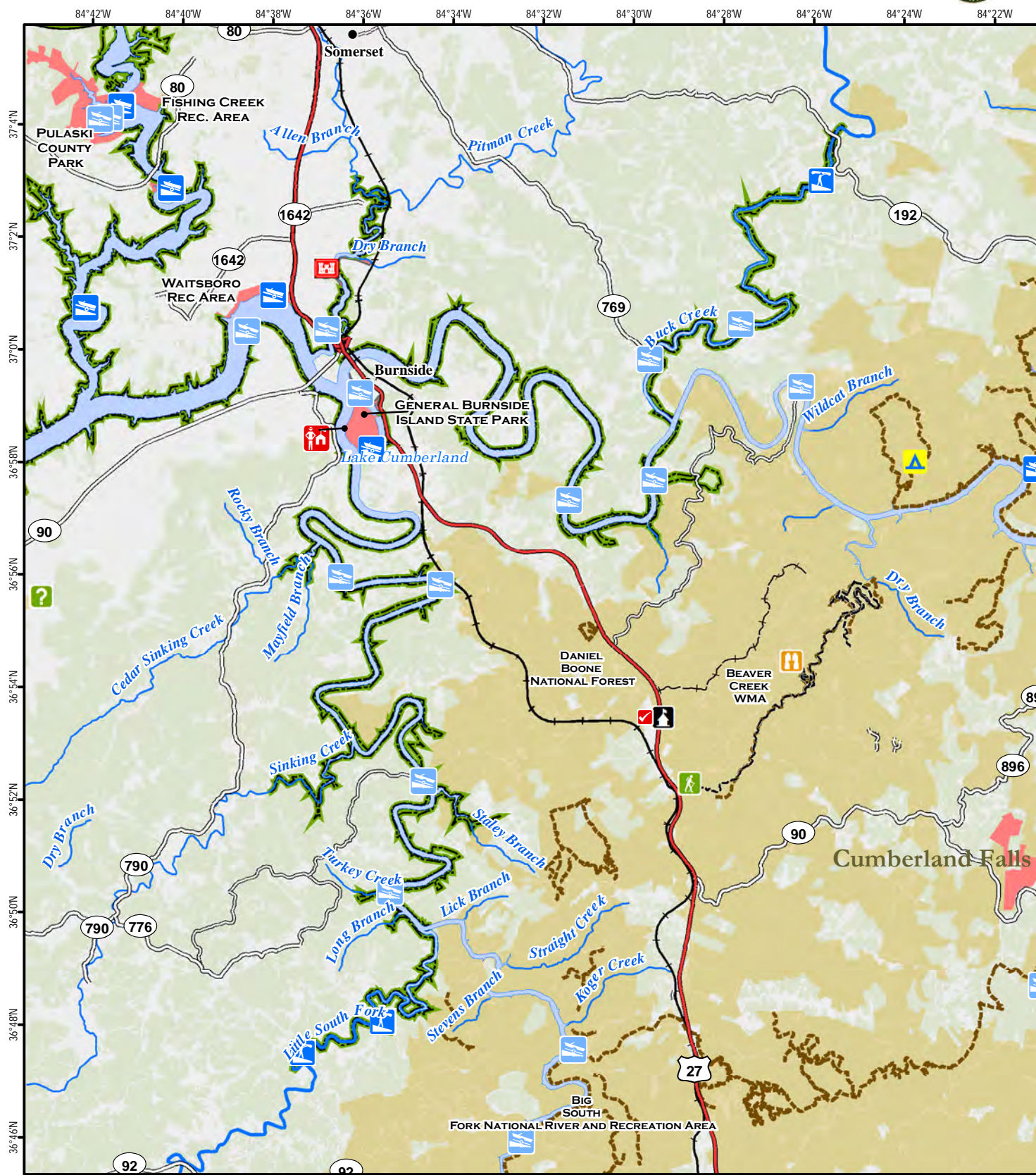


Note to Map Users

Map prepared by Kentucky Department of Fish & Wildlife Resources (KDFWR). Although KDFWR strives for accuracy, data used to create this map are from a variety of sources and dates; as such, KDFWR makes no representations regarding the accuracy or fitness for use of the information furnished herein.



Lake Cumberland Wildlife Management Area Map 3



A map legend and additional information are provided on PDF pages that accompany this map.

Publication Date: 1/12/2018
Land Classification from National Land Cover Database 2011



0 1 2 3 Mile
Scale 1:175,000

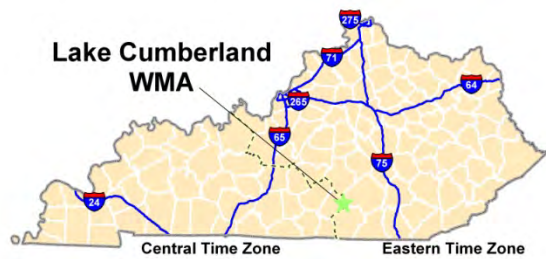
Note to Map Users

Map prepared by Kentucky Department of Fish & Wildlife Resources (KDFWR). Although KDFWR strives for accuracy, data used to create this map are from a variety of sources and dates; as such, KDFWR makes no representations regarding the accuracy or fitness for use of the information furnished herein.

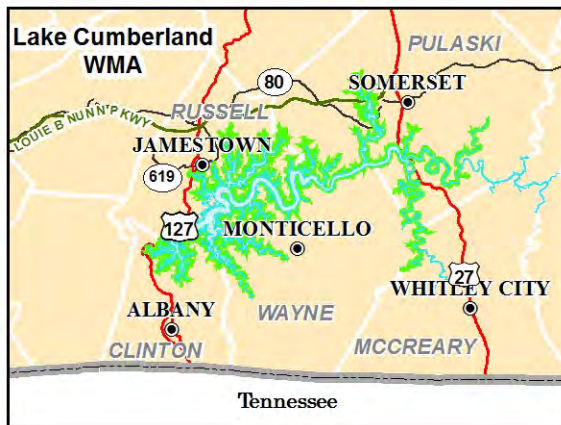


Lake Cumberland WMA Information

Public Hunting Area Location



Regional Locator



WMA Overview

Location & Size: Clinton, McCreary, Pulaski, Russell, Wayne counties. WMA is 38,769 acres, Lake Cumberland is 47,625 acres.

Contact: (606) 376-8083; COE office (606) 679-6337

Elevation: minimum 630 feet, maximum 1218 feet.

Entrance GPS coordinates: Latitude N 36.86047, Longitude W -85.07927

Area Habitat: mostly forest: open land 13%, forest 79%, wetland 0%, open water 8%.

Directions & Description:

WMA consists of shoreline surrounding Lake Cumberland. Fishing in Poynter, Clifty, and Coldwater creeks, 10 miles west of Somerset on KY 80, then 7 miles on Piney Grove RD. Caney Fork Creek, 8 miles northeast of Jamestown on KY 619. Many other access points, roads and trails around lake.

Gently sloping creek bottoms to steep ridges, hardwood forests, old farmlands, wildlife plantings. Fishing and hiking. Opportunities for hunting, fishing, boating, and birding on the lake.

Mobility impaired access to permit holders in designated area. For camping, check with owner. Camping facilities and horseback riding trails available at Lake Cumberland State Resort Park. Lake Cumberland State Resort Park and General Burnside State Park are nearby.

Owned by U. S. Army Corps of Engineers.

Online Resources

Public Hunting Area users must abide by the Kentucky hunting, trapping, and fishing regulations. It is incumbent on persons using Public Hunting Areas to become familiar with these regulations. Kentucky Department of Fish & Wildlife Resources provides these regulations on our Web site at fw.ky.gov or by calling 1-800-858-1549.

Wildlife Management Area Map Notes & Legend

NOTE TO MAP USERS:

For most WMA maps the landscape is depicted using a combination of elevation contours, hillshading and a green tint indicating woodland areas that is derived from satellite imagery. On WMAs that are relatively small or have a history of surface mining aerial photography is used.

WMA Map Legend

	WMA Office		WMA Boundary		Populated Place
	Information Kiosk		Aerial photograph		Kentucky Boundary
	Check station		Other Public Hunting Areas		Interstate Highway
	Mobility-impaired Hunting Blind		Area Off Limits		Kentucky Parkway
	Trailhead		No Hunting		U.S. Highway
	Horseback Trailhead		Seasonally Restricted Access		State Highway
	Parking Lot		Mobility Impaired Hunting Area		Local Road
	Picnic Area		Primitive Hunting Only		Forest Service Road
	Restrooms		Foot Traffic Only		Active Railroad
	Wildlife Viewing Site		Open Water		Abandoned Railroad
	Interpretive Site		Wetland		Federal Recreation Trail
	Retriever Training Site		Woodland		WMA Road
	Gate				WMA Foot Trail
	Campground				WMA Horse Trail
	Cemetery				Gas Pipeline
	Corps of Engineers Office				Powerline
	Waterfowl Blind				Rivers and Streams
	Shooting Range				Dam
	Established Bank Access				Trout Waters
	Fishing Pier				Elevation Contour
	Carrydown Launch				
	Small Boat Ramp				
	Large Boat Ramp				
	State Park Office				