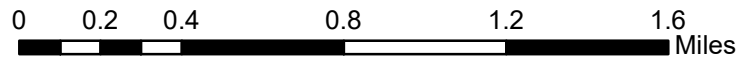
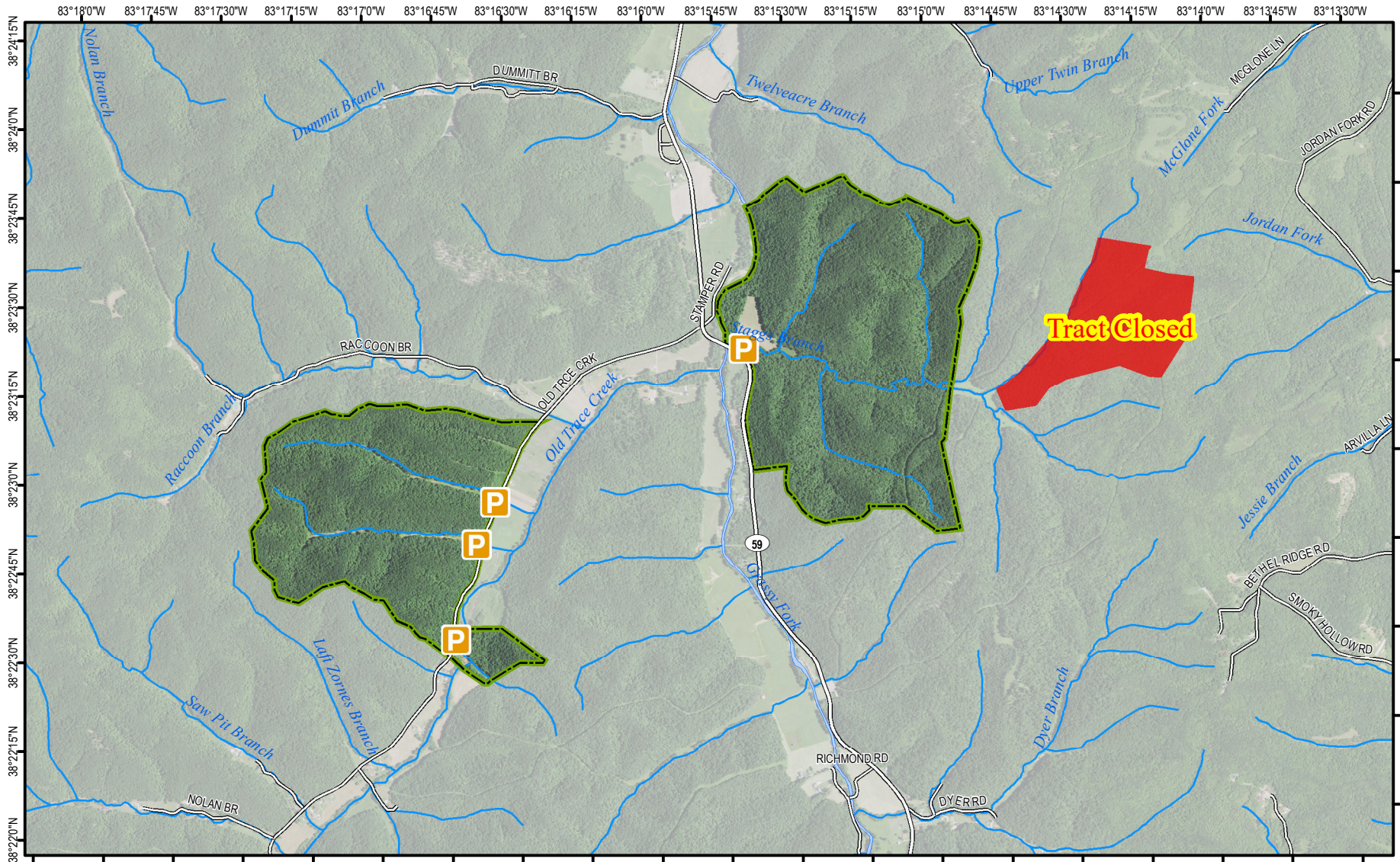
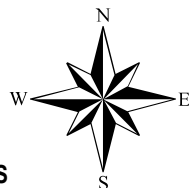


# Old Trace Creek Wildlife Management Area



A map legend and additional information are provided on PDF pages that accompany this map.

Map Scale 1:30,000

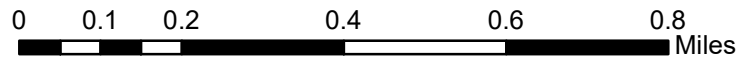
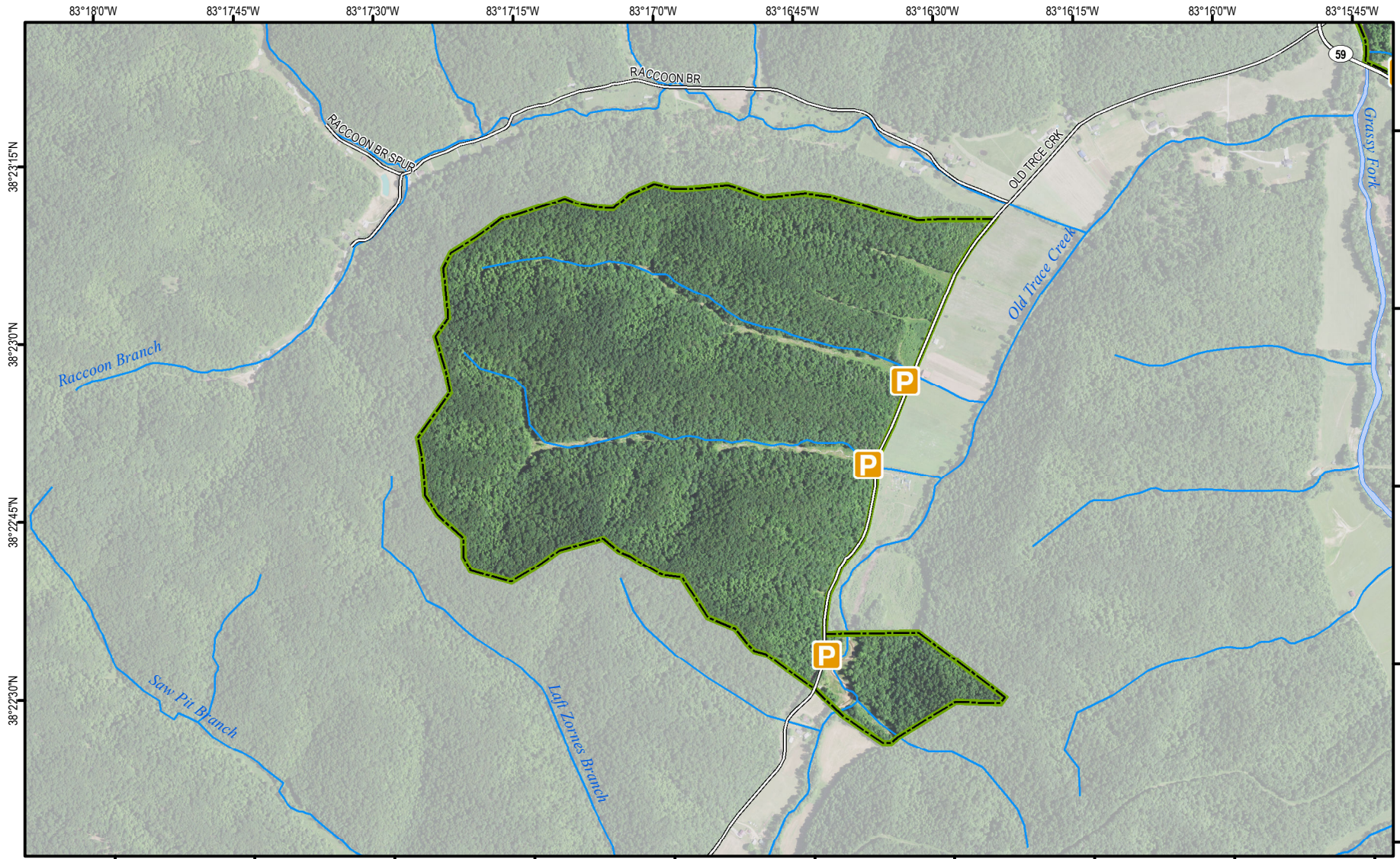


Date: 3/22/2022  
Service Layers Courtesy of DGI, USDA, and USGS

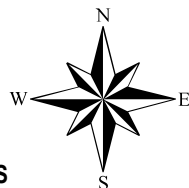
### Note to Map Users

Map prepared by Kentucky Department of Fish & Wildlife Resources (KDFWR). Although KDFWR strives for accuracy, data used to create this map are from a variety of sources and dates; as such, KDFWR makes no representations regarding the accuracy or fitness for use of the information furnished herein.

# Old Trace Creek Wildlife Management Area



Map Scale 1:15,000



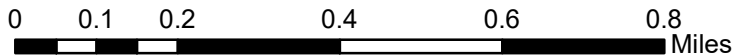
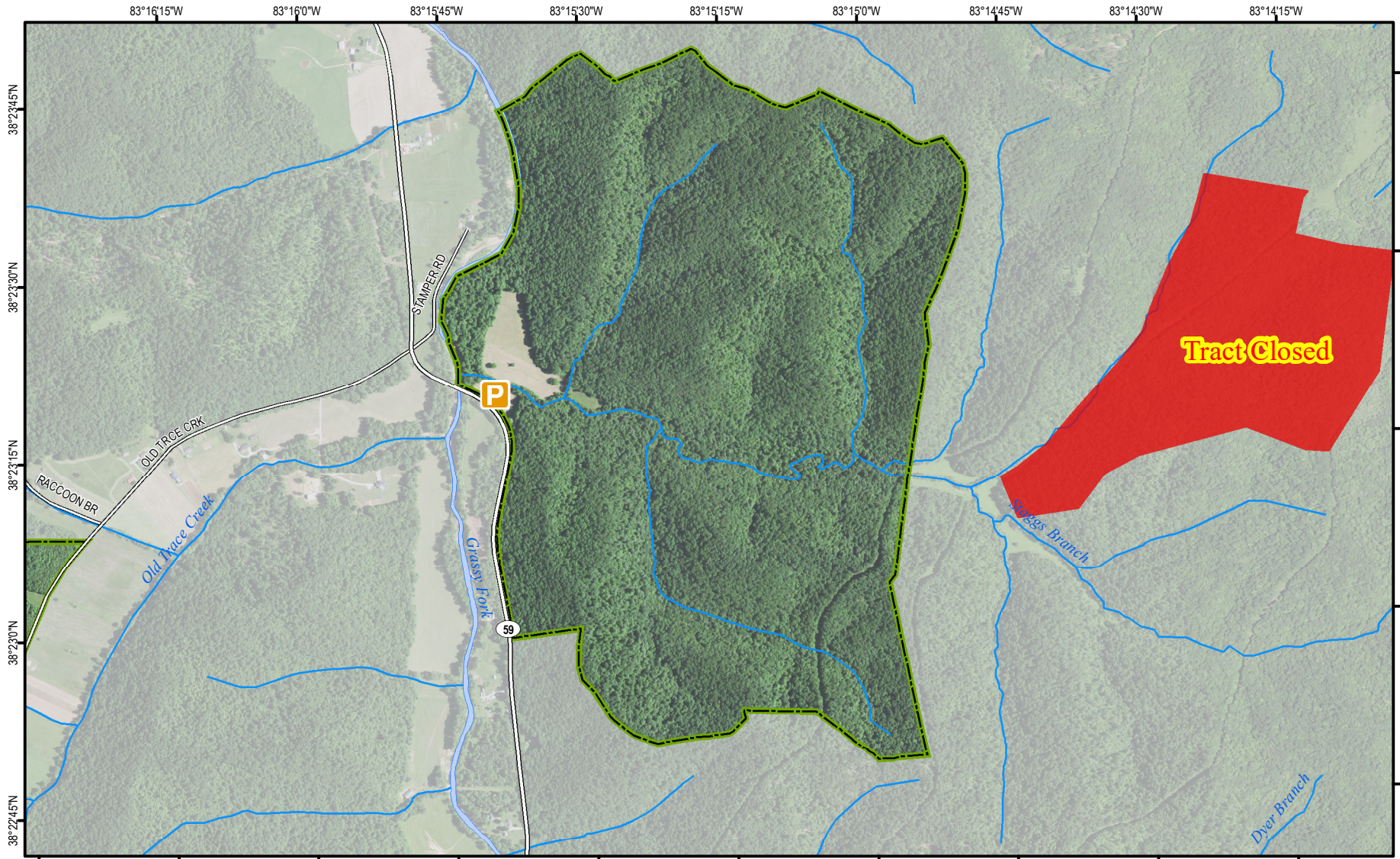
A map legend and additional information are provided on PDF pages that accompany this map.

Date: 3/22/2022  
Service Layers Courtesy of DGI, USDA, and USGS

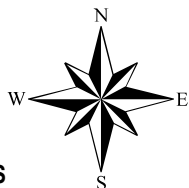
### Note to Map Users

Map prepared by Kentucky Department of Fish & Wildlife Resources (KDFWR). Although KDFWR strives for accuracy, data used to create this map are from a variety of sources and dates; as such, KDFWR makes no representations regarding the accuracy or fitness for use of the information furnished herein.

# Old Trace Creek Wildlife Management Area



Map Scale 1:15,000



A map legend and additional information are provided on PDF pages that accompany this map.

Date: 3/22/2022  
Service Layers Courtesy of DGI, USDA, and USGS

### Note to Map Users

Map prepared by Kentucky Department of Fish & Wildlife Resources (KDFWR). Although KDFWR strives for accuracy, data used to create this map are from a variety of sources and dates; as such, KDFWR makes no representations regarding the accuracy or fitness for use of the information furnished herein.

# Old Trace Creek WMA Information

## Public Hunting Area Location



## Regional Locator



## WMA Overview

**Location & Size:** Lewis County, 769 acres.

**Contact:** (606)-780-0854

**Elevation:** minimum 780 feet, maximum 1140 feet.

**Entrance GPS coordinates:** Latitude N 38.38007,  
Longitude W -83.27716

**Area Habitat:** mostly forest: open land 3%, forest 97%, wetland 0%, open water 0%.

## Directions & Description:

Located in Lewis County, Old Trace Creek Wildlife Management Area was purchased with Kentucky Wetland and Stream Mitigation (FILO) Fund for stream restoration. The property is about 97% forested with the remaining open land being creek drainages and a couple of small fields.

Old Trace Creek has moderate to steep terrain with several forested ridges and benches. There is abundant opportunity for game species as most of the tract is upland oak forest. Old Trace Creek is under statewide regulations for hunting season and bag limits. The easternmost tract is being used for management purposes only; it is currently closed to public use.

To access the property, take exit 156 off I-64. Turn left, then take another left almost immediately onto KY 59. Travel approximately 6 miles; the parking area for the first tract is on the right. For the second tract, continue on KY 59, then turn left onto Old Trace Creek Road (Old Trace Hill Road) and go 1 mile. The property is on the right.

Old Trace Creek WMA is owned by Ky. Dept. Fish and Wildlife Resources.

## Online Resources

Public Hunting Area users must abide by the Kentucky hunting, trapping, and fishing regulations. It is incumbent on persons using Public Hunting Areas to become familiar with these regulations. Kentucky Department of Fish & Wildlife Resources provides these regulations on our Web site at [fw.ky.gov](http://fw.ky.gov) or by calling 1-800-858-1549..

# Wildlife Management Area Map Notes & Legend

## NOTE TO MAP USERS:

For most WMA maps the landscape is depicted using a combination of elevation contours, hillshading and a green tint indicating woodland areas that is derived from satellite imagery. On WMAs that are relatively small or have a history of surface mining aerial photography is used.

## WMA Map Legend

	WMA Office		WMA Boundary		Populated Place
	Information Kiosk		Aerial photograph		Kentucky Boundary
	Check station		Other Public Hunting Areas		Interstate Highway
	Mobility-impaired Hunting Blind		Area Off Limits		Kentucky Parkway
	Trailhead		No Hunting		U.S. Highway
	Horseback Trailhead		Seasonally Restricted Access		State Highway
	Parking Lot		Mobility Impaired Hunting Area		Local Road
	Picnic Area		Primitive Hunting Only		Forest Service Road
	Restrooms		Foot Traffic Only		Active Railroad
	Wildlife Viewing Site		Open Water		Abandoned Railroad
	Interpretive Site		Wetland		Federal Recreation Trail
	Retriever Training Site		Woodland		WMA Road
	Gate				WMA Foot Trail
	Campground				WMA Horse Trail
	Cemetery				Gas Pipeline
	Corps of Engineers Office				Powerline
	Waterfowl Blind				Rivers and Streams
	Shooting Range				Dam
	Established Bank Access				Trout Waters
	Fishing Pier				Elevation Contour
	Carrydown Launch				
	Small Boat Ramp				
	Large Boat Ramp				
	State Park Office				