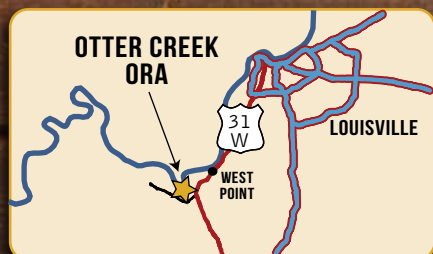




	Otter Creek Boundary
	No Hunting Area
	CSX Railroad Land
	Fort Knox
	Private Land
	Roads
	Fishing Trail
	Active Railroad
	Trout Waters
	Bank Access
	Carrydown Only
	Office
	Pavillion
	Picnic Area
	Campground
	Shooting Range
	Restrooms
	Entrance Gate

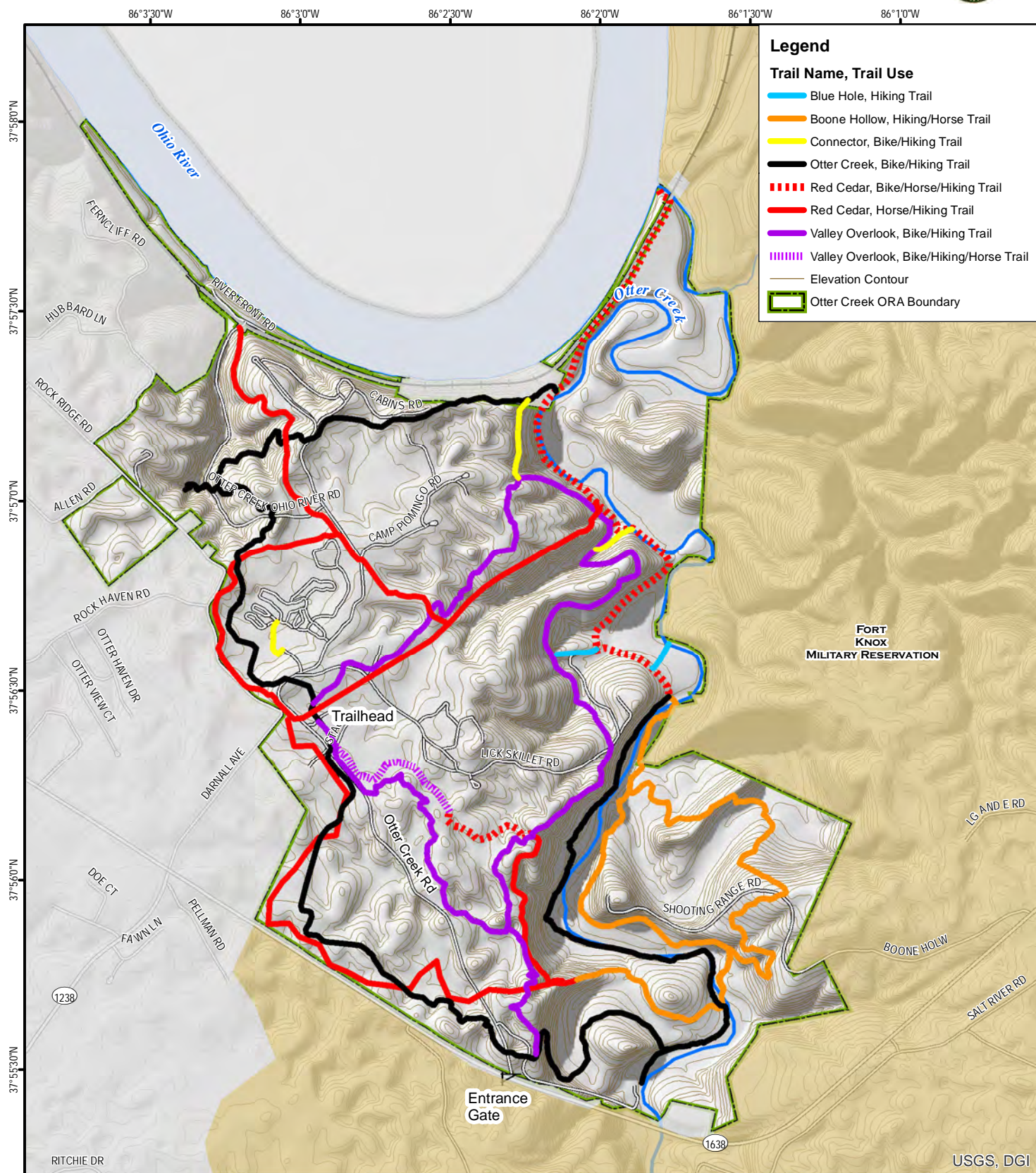
Trail maps available online at fw.ky.gov

Welcome To
OTTER CREEK
 OUTDOOR RECREATION AREA
 DEPARTMENT OF FISH AND WILDLIFE



Note to Map Users: Map prepared by Kentucky Department of Fish & Wildlife Resources (KDFWR). Although KDFWR strives for accuracy, data used to create this map are from a variety of sources and dates; as such, KDFWR makes no representations regarding the accuracy or fitness for use of the information furnished herein.

Otter Creek Outdoor Recreation Area - Trails



Publication Date: 8/24/2015



0 0.25 0.5 0.75 1 Mile

Scale 1:26,000

Contour interval: 10 feet



Note to Map Users

Map prepared by Kentucky Department of Fish & Wildlife Resources (KDFWR). Although KDFWR strives for accuracy, data used to create this map are from a variety of sources and dates; as such, KDFWR makes no representations regarding the accuracy or fitness for use of the information furnished herein.

Otter Creek Outdoor Recreation Area Information

Public Hunting Area Location

Otter Creek Outdoor Recreation Area



Regional Locator



WMA Overview

Location & Size: Meade County, 2,222 acres.

Contact: (502) 942-9171 office, Trail & Fishing Hotline (502) 942-5052

Elevation: minimum 390 feet, maximum 690 feet.

Entrance GPS coordinates: Latitude N 37.9247, Longitude W -86.0381

Area Habitat: mostly forest: open land 8.91%, forest 81.46%, wetland 9.09%, open water 0.45%.

Directions & Description:

The area is 6.2 miles from the intersection of KY 448 and KY 1638, in Brandenburg, and 2.7 miles from the junction of KY 1638 and the Dixie HWY (U.S. 31 W). Terrain is steep to rolling with bluffs overlooking the Ohio River and Otter Creek. Fishing access includes 5 miles of Otter Creek and 2.4 miles of the Ohio River. Multi-use trails are present. Refer to trail map for designated uses.

A \$3 per person daily access fee will be charged for entry to the area. Available activities currently include picnicking, hiking, bird watching, disc golf, wildlife watching and geocaching. A person may buy a \$30 annual permit for these activities. Children under 12 may access the area for free. Primitive and RV camping reservations can be made at [Otter Creek Campground- Firefly Reservations](#). A \$7 additional daily fee is required for high impact activities: horseback riding, mountain biking, archery range and shooting range. The rifle range (for single projectile firearms only; no shotshells or pistols allowed), and pistol range (for pistols only; no shotguns or rifles allowed) are open Tuesday-Saturday 9 am-sunset & Sundays noon-sunset (Closed Monday's for routine maintenance). A person may buy a \$70 annual permit for high impact activities.

Call the Trail and Fishing Status hotline, or Area office for closures or events.

Anglers and hunters must pay the daily access fee, and must possess a valid fishing or hunting license and appropriate permits. Otter Creek offers excellent stream fishing for smallmouth bass and rainbow trout. Anglers must possess a trout stamp to keep rainbow trout.

Hunters may pursue squirrels, rabbits, furbearers, turkeys and deer. Squirrel and furbearer hunting is open under statewide regulations.

Deer hunting with archery and crossbow equipment is open under statewide regulations. Otter Creek Outdoor Recreation Area will be closed to all other activities during the firearms quota deer hunts. Motorized, off-road vehicles are not allowed on the area.

Online Resources

Public Hunting Area users must abide by the Kentucky hunting, trapping, and fishing regulations. It is incumbent on persons using Public Hunting Areas to become familiar with these regulations. Kentucky Department of Fish & Wildlife Resources provides these regulations on our Web site at fw.ky.gov or by calling 1-800-858-1549.