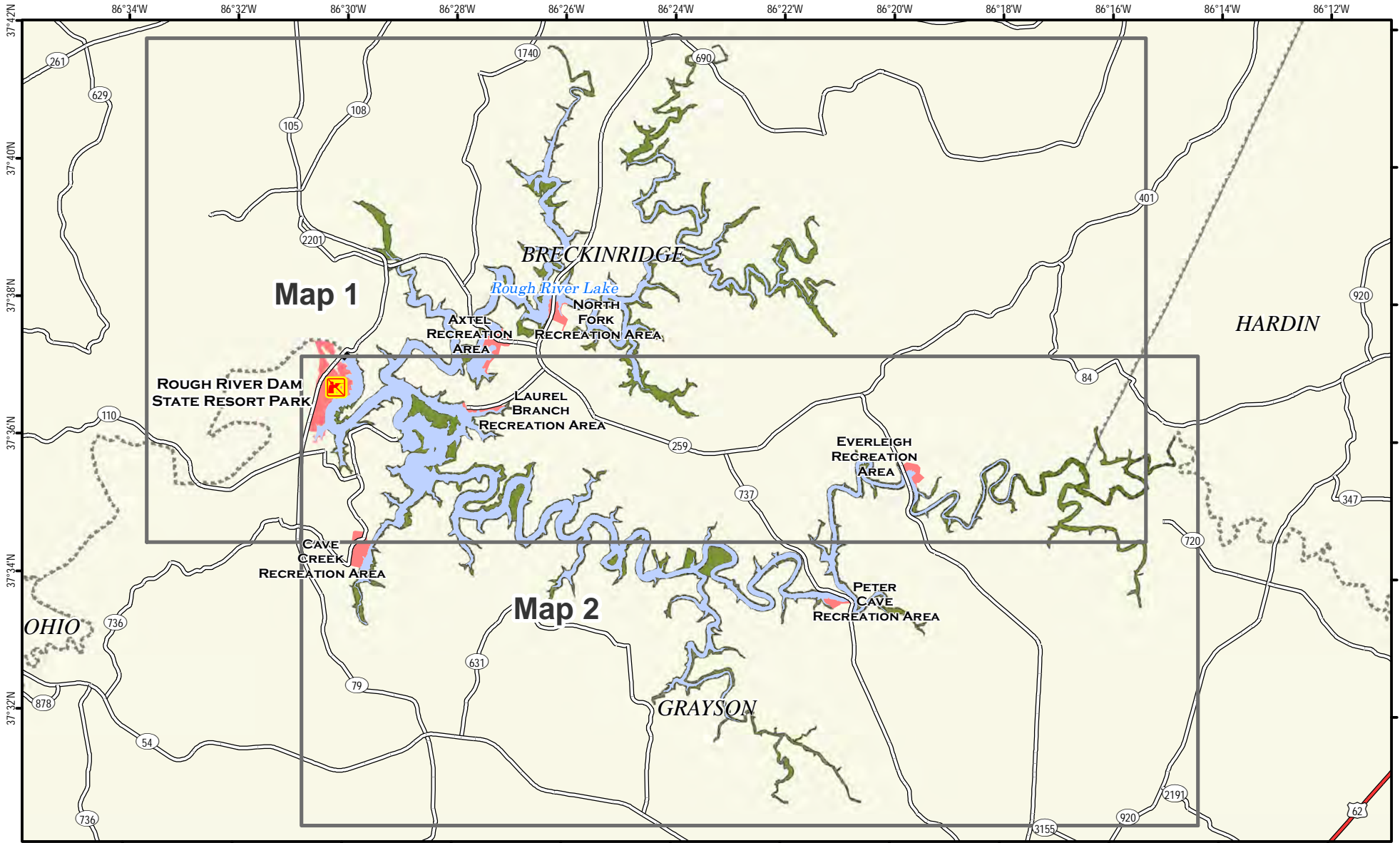
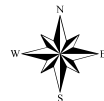




Rough River Lake Wildlife Management Area Index Map



A map legend and additional information are provided on PDF pages that accompany this map.



0 0.5 1 1.5 2 2.5 3 Mile



Scale 1:145,000

Publication Date: 3/22/2017

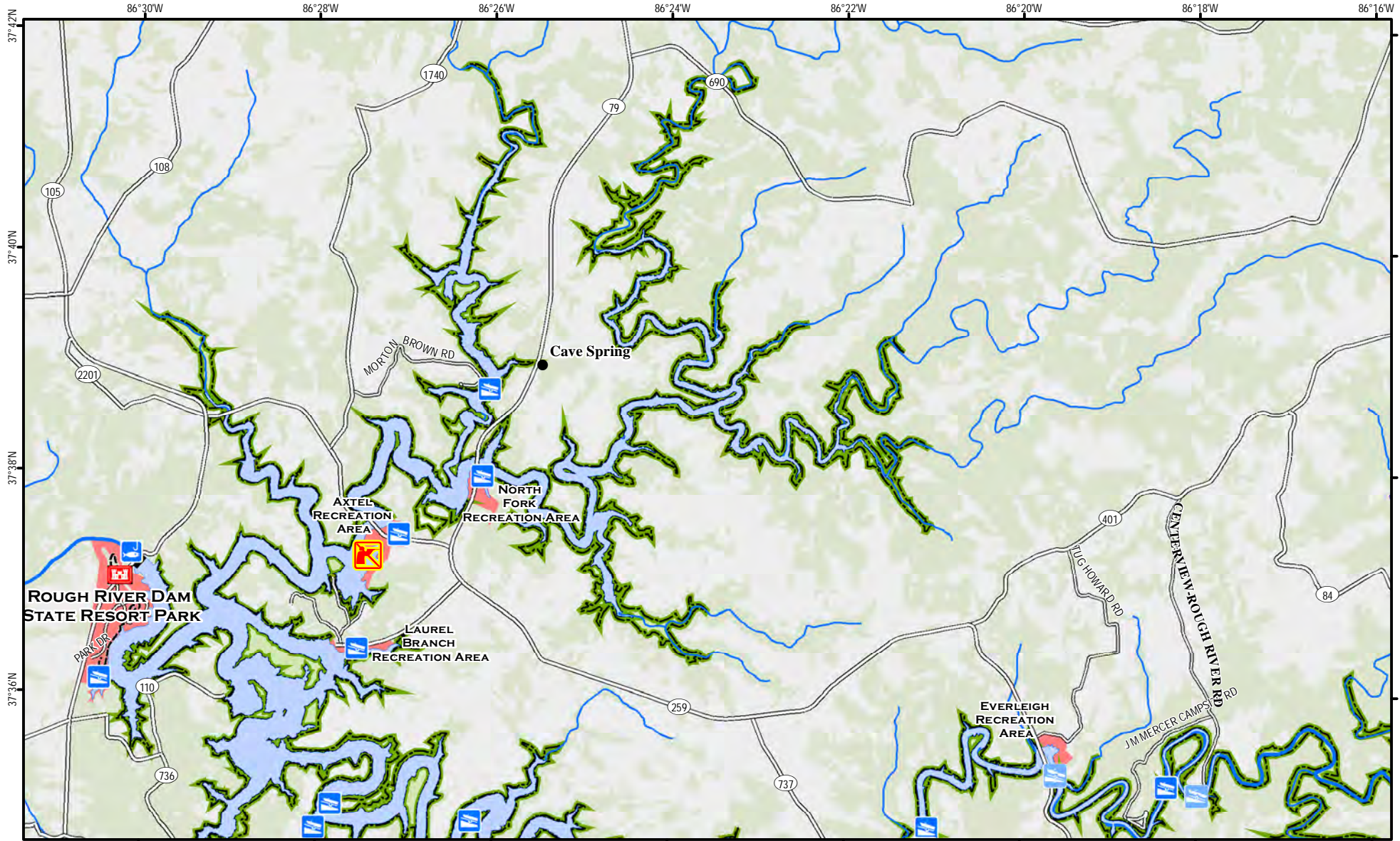


Note to Map Users

Map prepared by Kentucky Department of Fish & Wildlife Resources (KDFWR). Although KDFWR strives for accuracy, data used to create this map are from a variety of sources and dates; as such, KDFWR makes no representations regarding the accuracy or fitness for use of the information furnished herein.

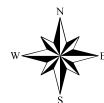


Rough River Lake Wildlife Management Area Map 1



A map legend and additional information are provided on PDF pages that accompany this map.

Publication Date: 3/22/2017
 Land Classification from National Land Cover Database 2011



0 0.5 1 1.5 2 2.5 3 Mile

Scale 1:90,000

See adjoining Map 2

Note to Map Users

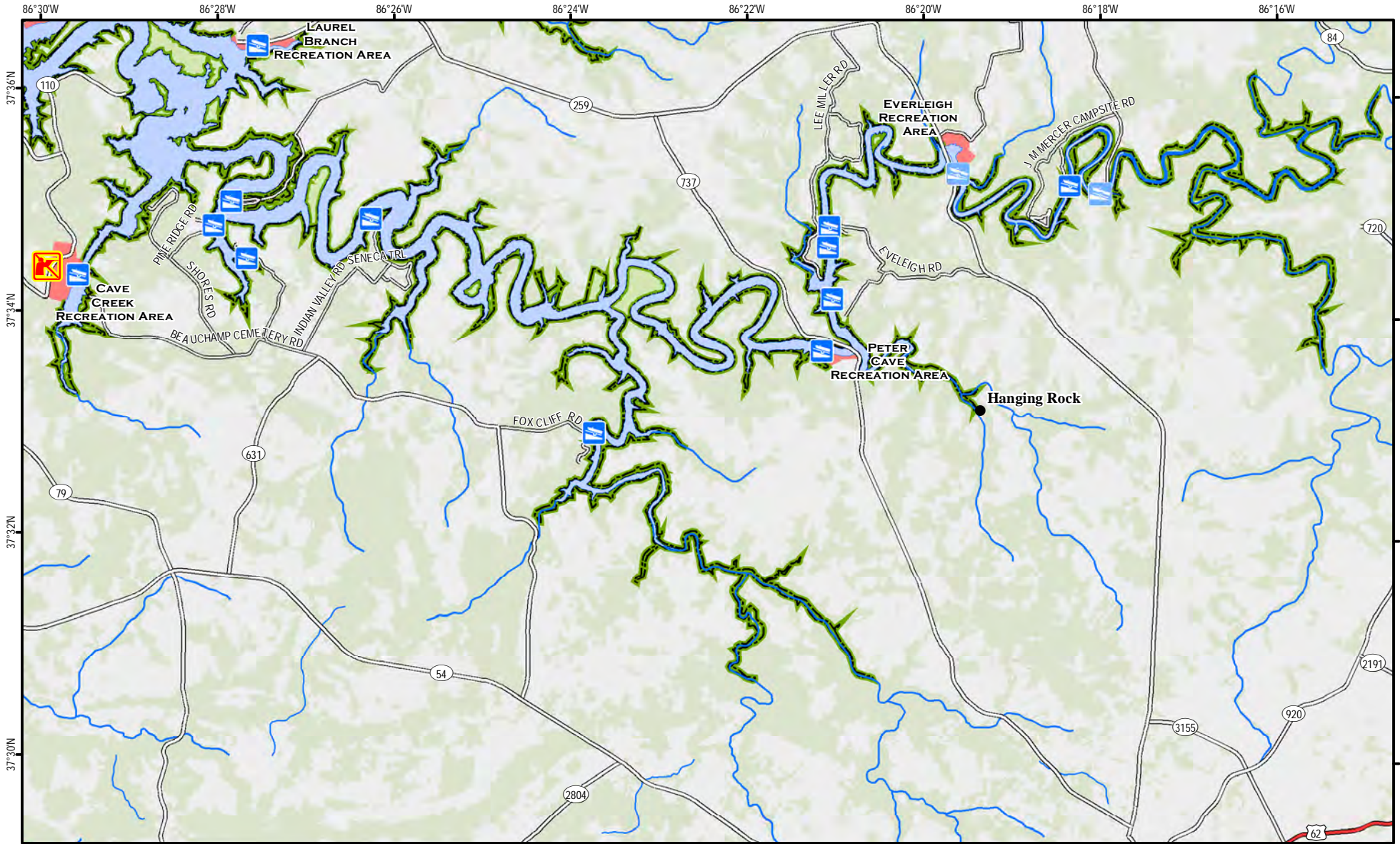
Map prepared by Kentucky Department of Fish & Wildlife Resources (KDFWR). Although KDFWR strives for accuracy, data used to create this map are from a variety of sources and dates; as such, KDFWR makes no representations regarding the accuracy or fitness for use of the information furnished herein.





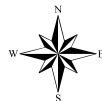
See adjoining
Map 1

Rough River Lake Wildlife Management Area Map 2



A map legend and additional information are provided on PDF pages that accompany this map.

Publication Date: 3/22/2017
Land Classification from National
Land Cover Database 2011



0 0.5 1 1.5 2 2.5 3 Mile

Scale 1:90,000



Note to Map Users

Map prepared by Kentucky Department of Fish & Wildlife Resources (KDFWR). Although KDFWR strives for accuracy, data used to create this map are from a variety of sources and dates; as such, KDFWR makes no representations regarding the accuracy or fitness for use of the information furnished herein.

Rough River Lake WMA Information

Public Hunting Area Location



Regional Locator



WMA Overview

Location & Size: Breckinridge, Grayson & Hardin counties. WMA is 4,180 acres, Rough River Lake is 4,856 acres.

Contact: (270) 646-5167; COE office (270) 257-2061

Elevation: minimum 424 feet, maximum 633 feet.

Entrance GPS coordinates: Latitude N 37.63605, Longitude W -86.43623

Area Habitat: mostly forest: open land 3%, forest 85%, wetland 0%, open water 12%

Directions & Description:

WMA consists of shoreline surrounding Rough River Lake. Access from Caneyville take KY 631; from Owensboro take US 60 west to Harned and KY 79; from Leitchfield, KY 259; from Big Clifty, KY 720; also access by boat. Rough terrain and high banks limit access to established areas. Wooded, with a few cleared fields. Hunters use care: areas surrounding public lands are heavily developed.

Laurel Branch Campground open year-round; no camping on the management area. Camping, swimming, overnight accommodations at Rough River Dam State Resort Park, (270) 257-2311; fishing and boating in lake.

Owned by U.S. Army Corps of Engineers.

Online Resources







Public Hunting Area users must abide by the Kentucky hunting, trapping, and fishing regulations. It is incumbent on persons using Public Hunting Areas to become familiar with these regulations. Kentucky Department of Fish & Wildlife Resources provides these regulations on our Web site at fw.ky.gov or by calling 1-800-858-1549.

Wildlife Management Area Map Notes & Legend

NOTE TO MAP USERS:

For most WMA maps the landscape is depicted using a combination of elevation contours, hillshading and a green tint indicating woodland areas that is derived from satellite imagery. On WMAs that are relatively small or have a history of surface mining aerial photography is used.

WMA Map Legend

	WMA Office		WMA Boundary		Populated Place
	Information Kiosk		Aerial photograph		Kentucky Boundary
	Check station		Other Public Hunting Areas		Interstate Highway
	Mobility-impaired Hunting Blind		Area Off Limits		Kentucky Parkway
	Trailhead		No Hunting		U.S. Highway
	Horseback Trailhead		Seasonally Restricted Access		State Highway
	Parking Lot		Mobility Impaired Hunting Area		Local Road
	Picnic Area		Primitive Hunting Only		Forest Service Road
	Restrooms		Foot Traffic Only		Active Railroad
	Wildlife Viewing Site		Open Water		Abandoned Railroad
	Interpretive Site		Wetland		Federal Recreation Trail
	Retriever Training Site		Woodland		WMA Road
	Gate				WMA Foot Trail
	Campground				WMA Horse Trail
	Cemetery				Gas Pipeline
	Corps of Engineers Office				Powerline
	Waterfowl Blind				Rivers and Streams
	Shooting Range				Dam
	Established Bank Access				Trout Waters
	Fishing Pier				Elevation Contour
	Carrydown Launch				
	Small Boat Ramp				
	Large Boat Ramp				
	State Park Office				