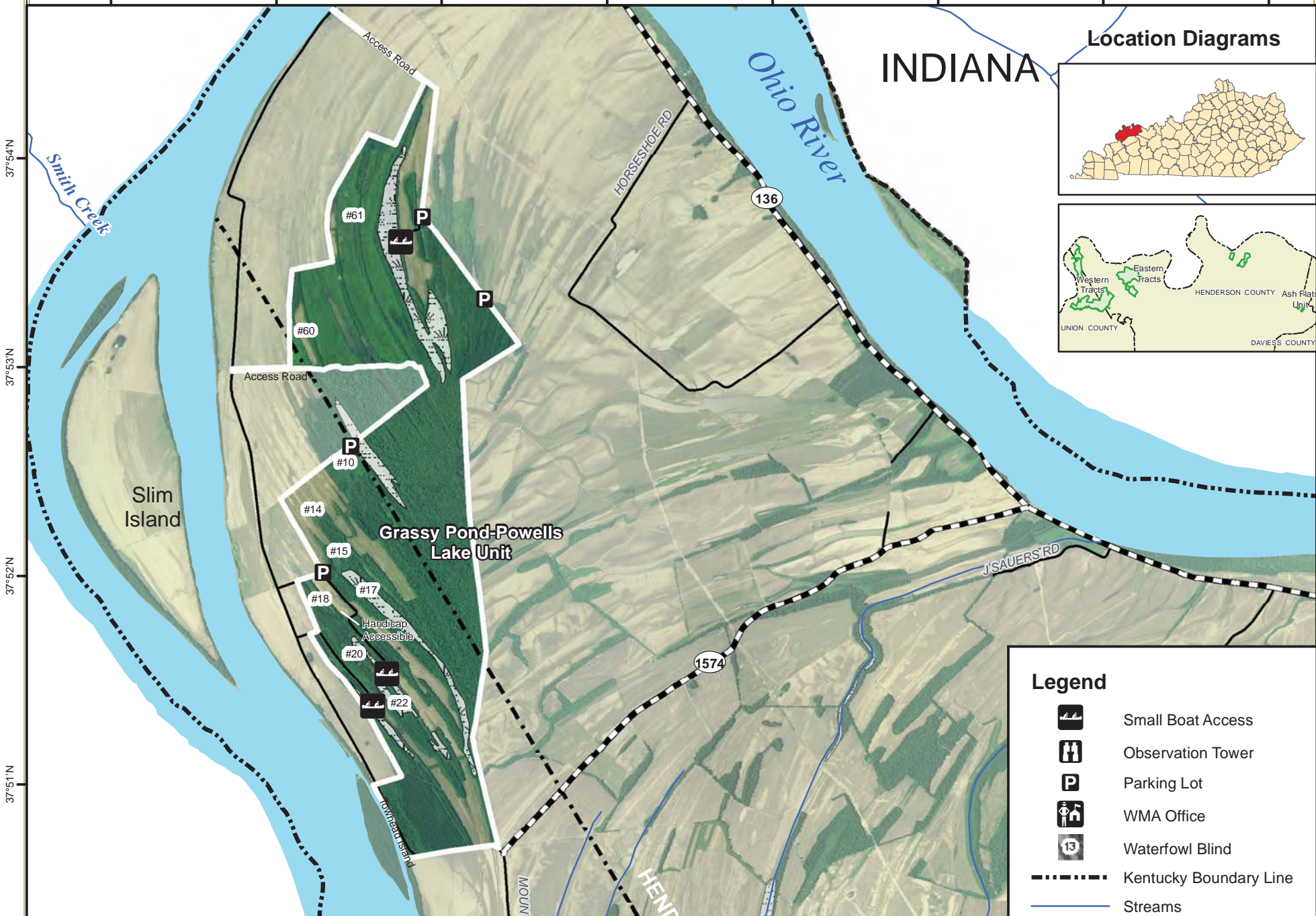




Sloughs WMA

Western Tracts



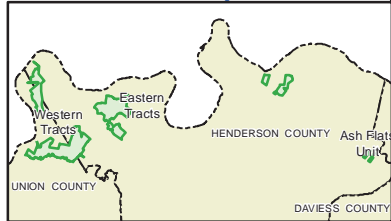
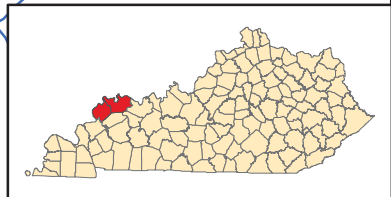
37°54'N

37°53'N

37°52'N

37°51'N

Location Diagrams



Legend

- Small Boat Access
- Observation Tower
- Parking Lot
- WMA Office
- Waterfowl Blind
- Kentucky Boundary Line
- Streams

See Adjoining Sloughs WMA Eastern Tracts Map

Hovey Lake Fish and Wildlife Area

INDIANA

Ohio River

Highland Creek

UNIONTOWN






Highland Creek Unit

Jenny Hole Unit

SMITH MILLS RD

BURBANK RD

RANCH RD

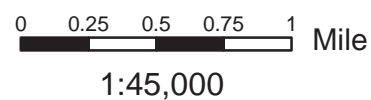
-  State Roads
-  Local Roads
-  County Boundary Lines
-  Access Road
-  Wetland

37°50'N
37°49'N
37°48'N
37°47'N

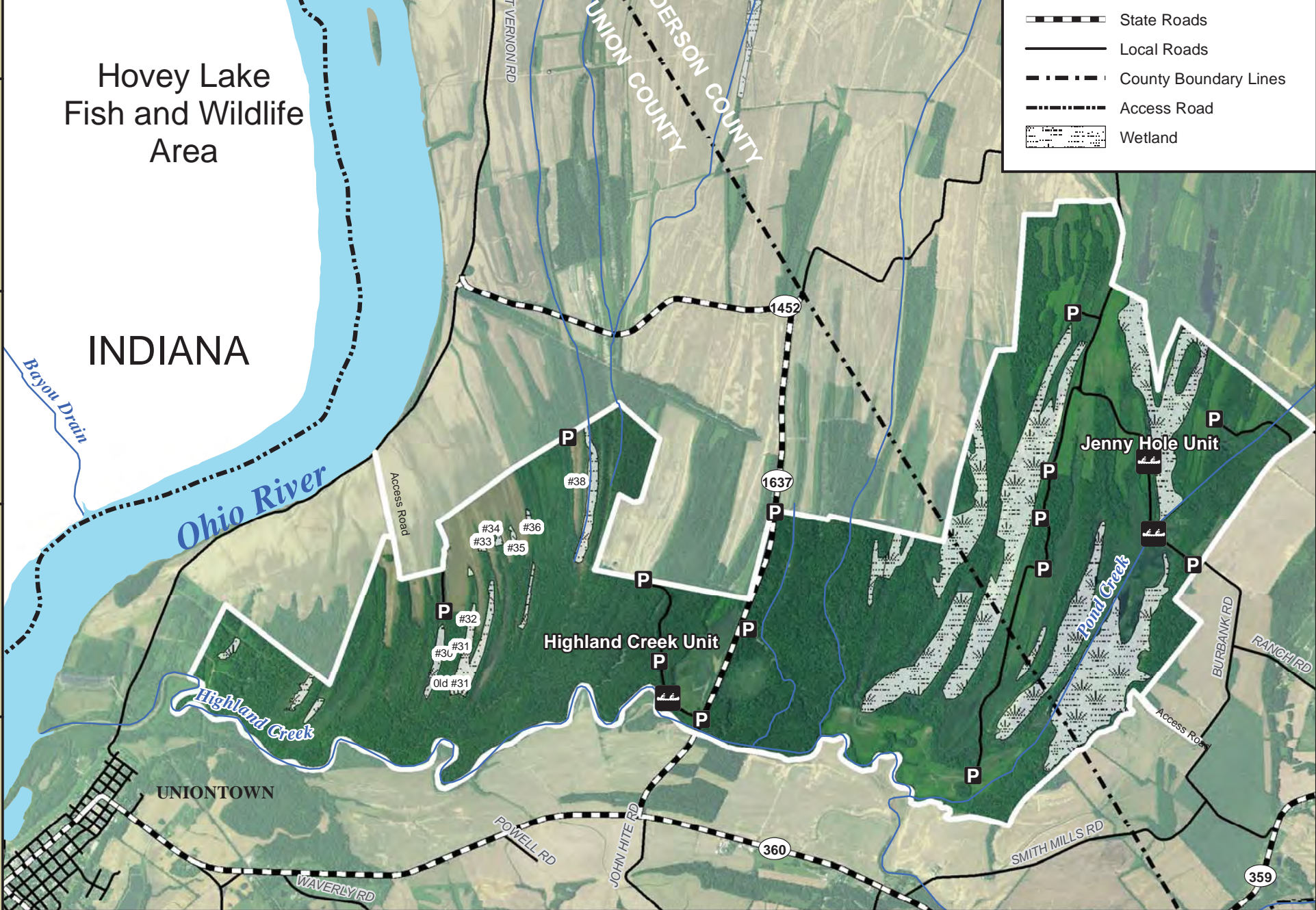
87°56'W 87°55'W 87°54'W 87°53'W 87°52'W 87°51'W 87°50'W 87°49'W



"Limitation of Liability: KY Dept. of Fish & Wildlife Resources does not know of any inaccuracies or defects in the information in this work and make "NO REPRESENTATIONS REGARDING THE FITNESS FOR USE OF THE INFORMATION OR DATA, FURNISHED HEREIN." Copyright."



Publication Date: 12/1/2016
Imagery from Farm Service Agency 2016





Sloughs WMA

Eastern Tracts



Sloughs WMA, (270) 827-2673, consists of 6 units in Henderson and Union counties. All except Sauerheber are open under statewide regulations for all hunting and trapping seasons. Alternating ridges and sloughs, moist soil management units, woodlands, brush, and open crop fields are found here. Kentucky's largest great blue heron rookery is on the area and up to 20,000 Canada geese and 10,000 ducks winter annually.

- 1) Sauerheber Unit: Located 6.5 miles northwest of Geneva on KY 268. REFER TO CURRENT HUNTING AND TRAPPING GUIDE FOR SPECIAL REGULATIONS THAT APPLY TO THIS UNIT.
- 2) Jenny Hole and 3) Highland Creek units are divided by a gravel road. Located 2.5 miles west of Smith Mills and 1.5 miles north of Uniontown on KY 136.
- 4) Ash Flats Unit: Located 3 miles northeast of Hebbardsville on Mason Landing Road.
- 5) Grassy Pond-Powells Lake Unit: Located 6 miles north of Uniontown and 12 miles west of Smith Mills on KY 136.
- 6) Cape Hills Unit: Located 1 mile north of Smith Mills. West access off Hwy. 136 on Martin-Martin Road near Smith Mills; East access off Mill Street, Smith Mills.

INDIANA

Diamond Island

Ohio River

Deep Slough

WEST FRANKLIN RD

STRAIGHT LINE RD

GREEN RD MCDONALD LANDING RD

TRAM RD

Duncan II Tract

Crenshaw Tract

Sauerheber Unit

Sauerheber Tower

Handicap Accessible

136

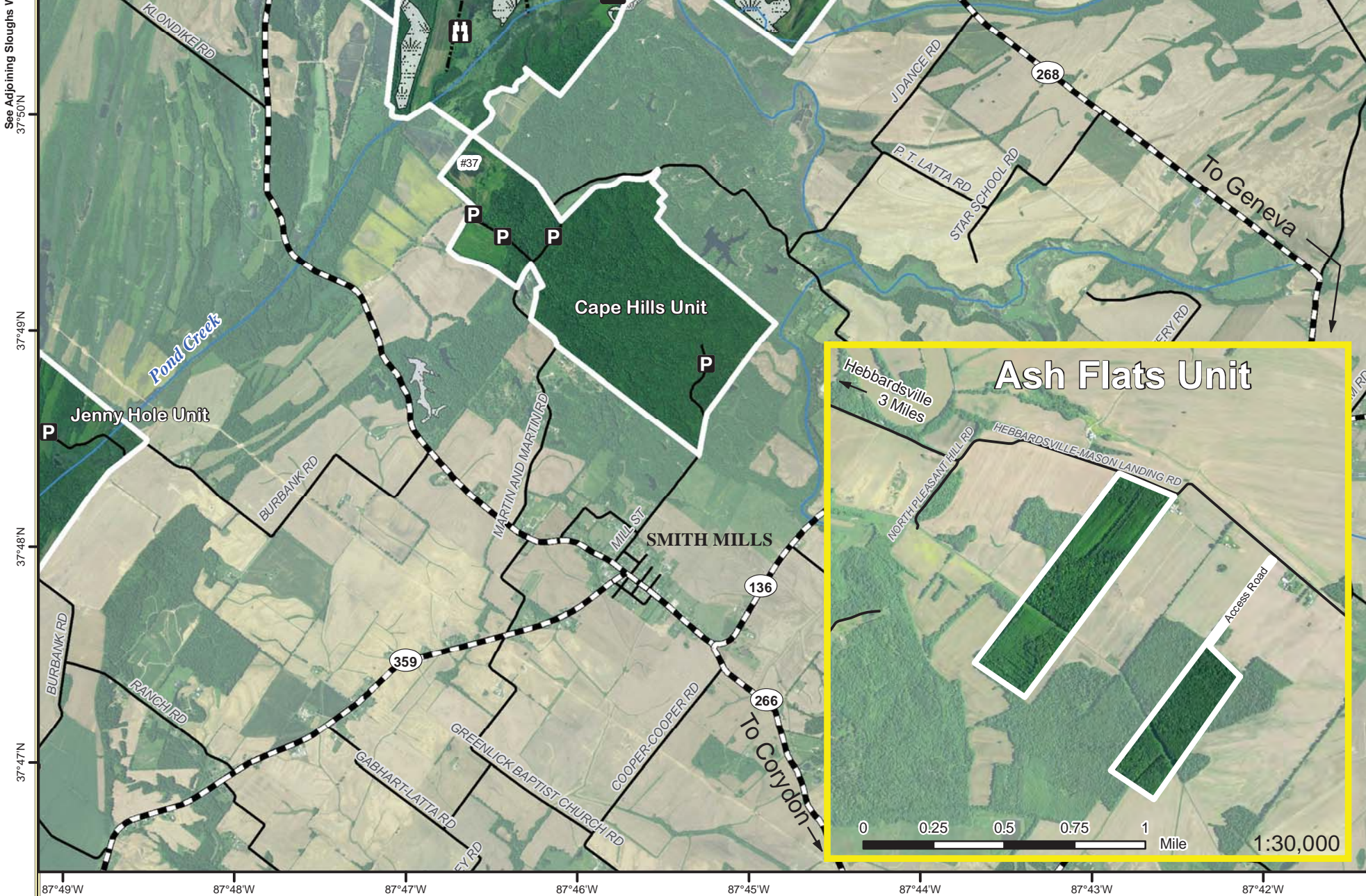
WMA Western Tracts Map
37°51'N

37°54'N

37°53'N

37°52'N

37°51'N



"Limitation of Liability: KY Dept. of Fish & Wildlife Resources does not know of any inaccuracies or defects in the information in this work and make "NO REPRESENTATIONS REGARDING THE FITNESS FOR USE OF THE INFORMATION OR DATA, FURNISHED HEREIN." Copyright."



1:45,000



Publication Date: 12/1/2016
Imagery from Farm Service Agency 2016

Sloughs WMA Information

Public Hunting Area Location



Regional Locator



WMA Overview

Location & Size: Henderson & Union counties, 11,111 acres.

Contact: (270) 827-2673

Elevation: minimum 338 feet, maximum 487 feet

Entrance GPS coordinates: Latitude N 37.86088, Longitude W -87.7793

Area Habitat: mostly wetland: open land 28%, forest 27%, wetland 44%, open water 1%.

Directions & Description:

WMA located approximately 10 miles west of Henderson, KY, consists of 6 units. All except Sauerheber Unit are open under statewide regulations for all hunting and trapping seasons. Alternating ridges and sloughs, moist soil management units, woodlands, brush, and open crop fields are found here. Kentucky's largest great blue heron rookery is on the area and up to 20,000 geese and 10,000 ducks winter annually. Waterfowl blind 18 is handicap accessible.

Sauerheber Unit: 6.5 miles northwest of Geneva on KY 268. Refer to current Hunting and Trapping Guide for special regulations that apply to this unit.

Jenny Hole and Highland Creek units are divided by gravel road, 2.5 miles west of Smith Mills and 1.5 miles north of Uniontown on KY 136.

Ash Flats Unit: Located 3 miles northeast of Hebbardsville on Mason Landing RD.

Grassy Pond-Powells Lake Unit: Located 6 miles north of Uniontown and 12 miles west of Smith Mills on KY 136.

Cape Hills Unit: Located 1 mile north of Smith Mills. West access off KY 136 on Martin-Martin RD near Smith Mills; East access off Mill Street, Smith Mills.

Owned by US Army Corps of Engineers and Kentucky Department of Fish and Wildlife Resources.

Online Resources

Public Hunting Area users must abide by the Kentucky hunting, trapping, and fishing regulations. It is incumbent on persons using Public Hunting Areas to become familiar with these regulations. Kentucky Department of Fish & Wildlife Resources provides these regulations on our Web site at fw.ky.gov or by calling 1-800-858-1549.