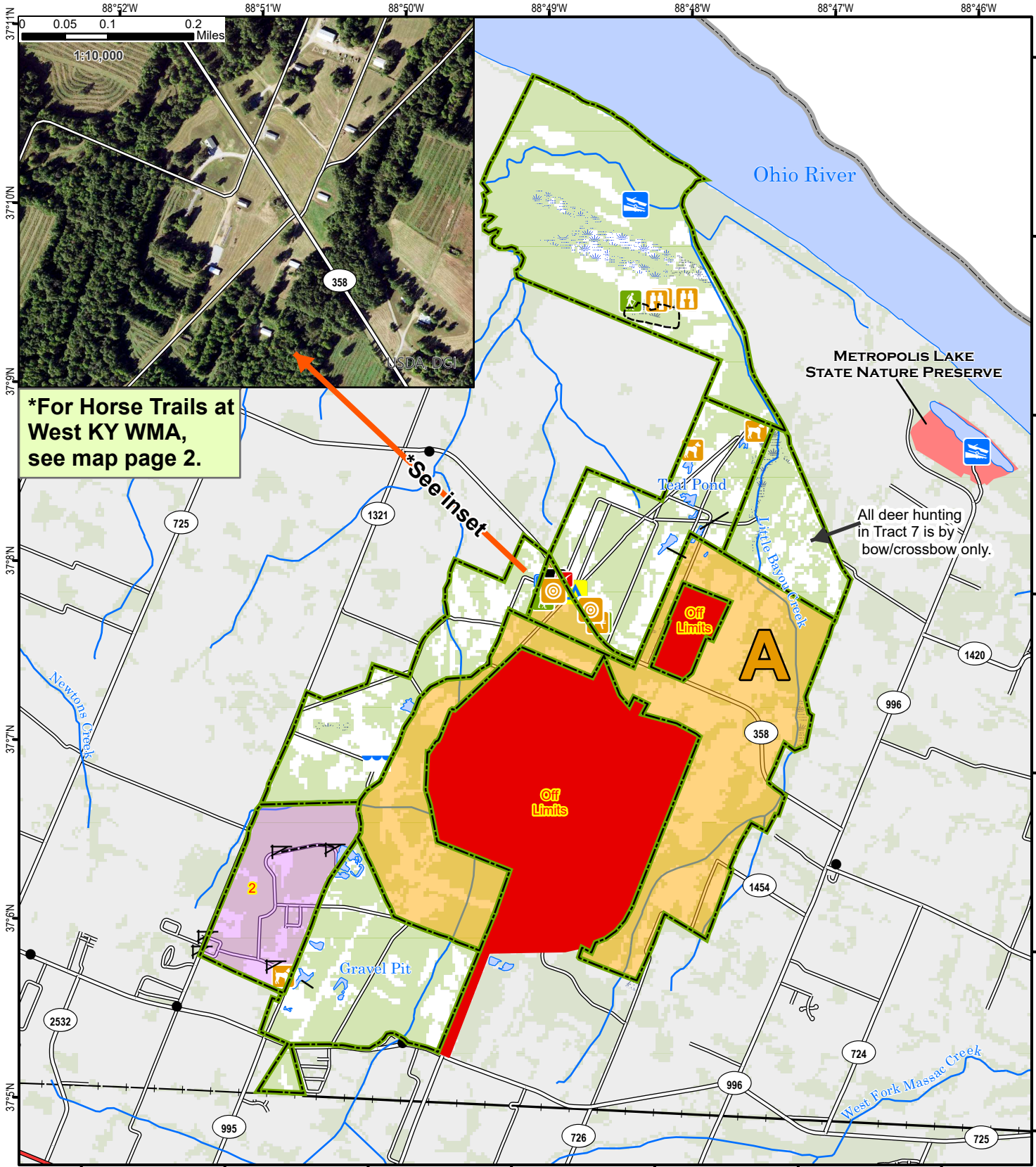


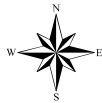


West Kentucky Wildlife Management Area



A map legend and additional information are provided on PDF pages that accompany this map.

Publication Date: 03/04/2025
 Land Classification from National Land Cover Database 2011
 Imagery from Farm Service Agency 2018



0 0.25 0.5 0.75 1 Mile

Scale 1:55,000

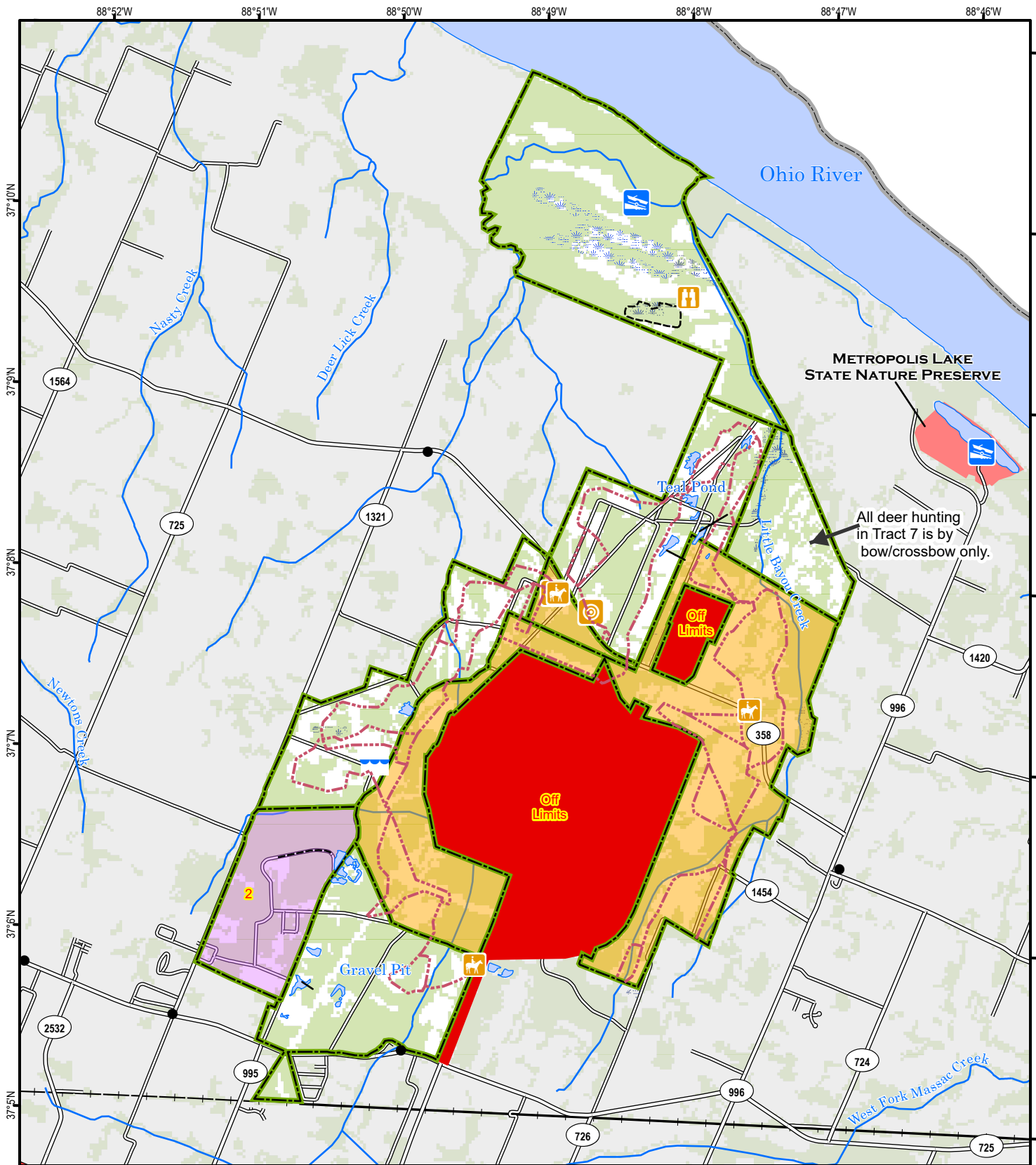


Note to Map Users

Map prepared by Kentucky Department of Fish & Wildlife Resources (KDFWR). Although KDFWR strives for accuracy, data used to create this map are from a variety of sources and dates; as such, KDFWR makes no representations regarding the accuracy or fitness for use of the information furnished herein.

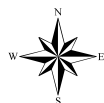


West Kentucky Wildlife Management Area



A map legend and additional information are provided on PDF pages that accompany this map.

Publication Date: 03/04/2025
 Land Classification from National Land Cover Database 2011
 Imagery from Farm Service Agency 2018



0 0.25 0.5 0.75 1 Mile

Scale 1:54,242



Note to Map Users

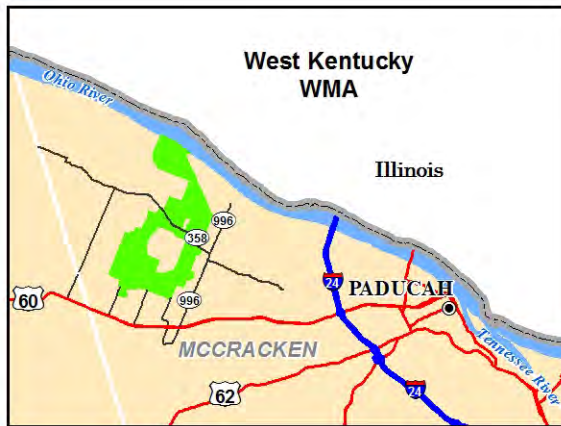
Map prepared by Kentucky Department of Fish & Wildlife Resources (KDFWR). Although KDFWR strives for accuracy, data used to create this map are from a variety of sources and dates; as such, KDFWR makes no representations regarding the accuracy or fitness for use of the information furnished herein.

West Kentucky WMA Information

Public Hunting Area Location



Regional Locator



WMA Overview

Location & Size: McCracken County, 5,738 acres.

Contact: (270) 488-3233

Elevation: minimum 297 feet, maximum 451 feet.

Entrance GPS coordinates: Latitude N 37.13324,
Longitude W -88.81393

Area Habitat: mostly forest: open land 34%, forest 47%, wetland 18%, open water 1%.

Directions & Description:

Seven miles from I-24, exit 4, in Paducah, on US 60 in Future City. Turn north on KY 996 for 3.6 miles. Turn west on KY 358 for 2.6 miles to office.

Old fields, woodlots, grasslands, crop fields and food plots. Twelve fishing ponds with access for small boats; picnicking, hiking; kennels and stalls for use during field trials. Horseback riding on designated trails only. National caliber horseback bird dog field trials, retriever field trials, and retriever test hunts are hosted September - May on the WMA. Chief Paduke Skeet Range (Phone (270) 488-3248, web site www.chiefpaduke.com) on KY 358 one-half mile east of office. Archery range (mobility-impaired accessible) with 10-50 yard targets open daily during daylight hours, wildlife viewing areas (Tupelo Swamp), the fishing pier at "Disabled Access Pond" is handicap assessable. Primitive camping is allowed on the WMA, but ONLY at the designated camping site.

For hunting there is mobility impaired access in designated areas to permit holders (Tract 3). Hunttable populations of deer, turkey, dove, squirrel, rabbits and quail exist on the area. Special regulations apply for deer, turkey and small game hunting. All vehicular traffic is prohibited on Tract 6 Feb. 1 - April 16.

Trails were put in with the assistance of a National Recreational Trails Fund grant and the Russ Chittenden Woodlands Fund provided funds for materials, signs, tree seedlings, and a large amount of volunteer labor.

Owned/leased by Kentucky Department of Fish and Wildlife Resources.

Online Resources


Public Hunting Area users must abide by the Kentucky hunting, trapping, and fishing regulations. It is incumbent on persons using Public Hunting Areas to become familiar with these regulations. Kentucky Department of Fish & Wildlife Resources provides these regulations on our Web site at fw.ky.gov or by calling 1-800-858-1549.

Wildlife Management Area Map Notes & Legend

NOTE TO MAP USERS:

For most WMA maps the landscape is depicted using a combination of elevation contours, hillshading and a green tint indicating woodland areas that is derived from satellite imagery. On WMAs that are relatively small or have a history of surface mining aerial photography is used.

WMA Map Legend

	WMA Office		Any Boat		Trout Waters
	Cleaning Area		Bank Access		Elevation Contour
	Oil Well		Carrydown Only		
	Water Well		Fishing Pier		
	Sign In/Out		Small Boat Only		75
	Access Point		Shooting Range		60
	Facility		State Park Office		169
	Exit Ramp		WMA Boundary		Named Road
	Pavilion		Aerial imagery		4596
	Point of Interest		Other Public Hunting Areas		
	Shooting Range		Area Off Limits		
	Waterfowl Blind		No Hunting		
	Wagon Tunnel		Seasonally Restricted Access		
	Observation Tower		Mobility Impaired Hunting Area		
	Campground		Primitive Hunting Only		
	Information Kiosk		Open Water		
	Check station		Wetland		
	Mobility-impaired Hunting Site		Woodland		
	Trailhead		Populated Place		
	Horseback Trailhead		Kentucky Boundary		
	Parking Lot		Interstate Highway		
	Picnic Area		Kentucky Parkway		
	Restrooms		U.S. Highway		
	Wildlife Viewing Site		State Highway		
	Interpretive Site		Local Road		
	Retriever Training Site		Forest Service Road		
	Upland Game Blind		Active Railroad		
	Gate		Abandoned Railroad		
	Cemetery		Federal Recreation Trail		
	Corps of Engineers Office		WMA Road		
	Water Hole		WMA Foot Trail		
	Rare Plant		WMA Horse Trail		
			Gas Pipeline		
			Powerline		
			Rivers and Streams		
			Dam		