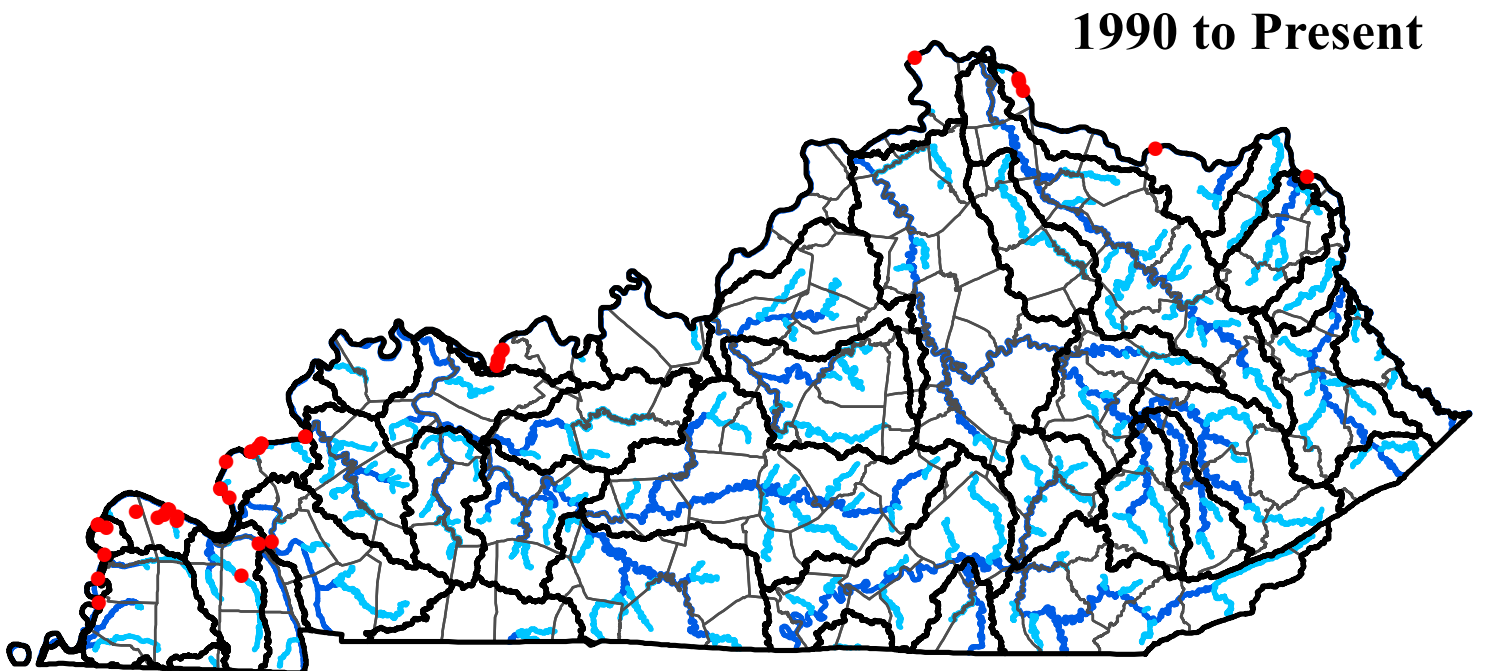
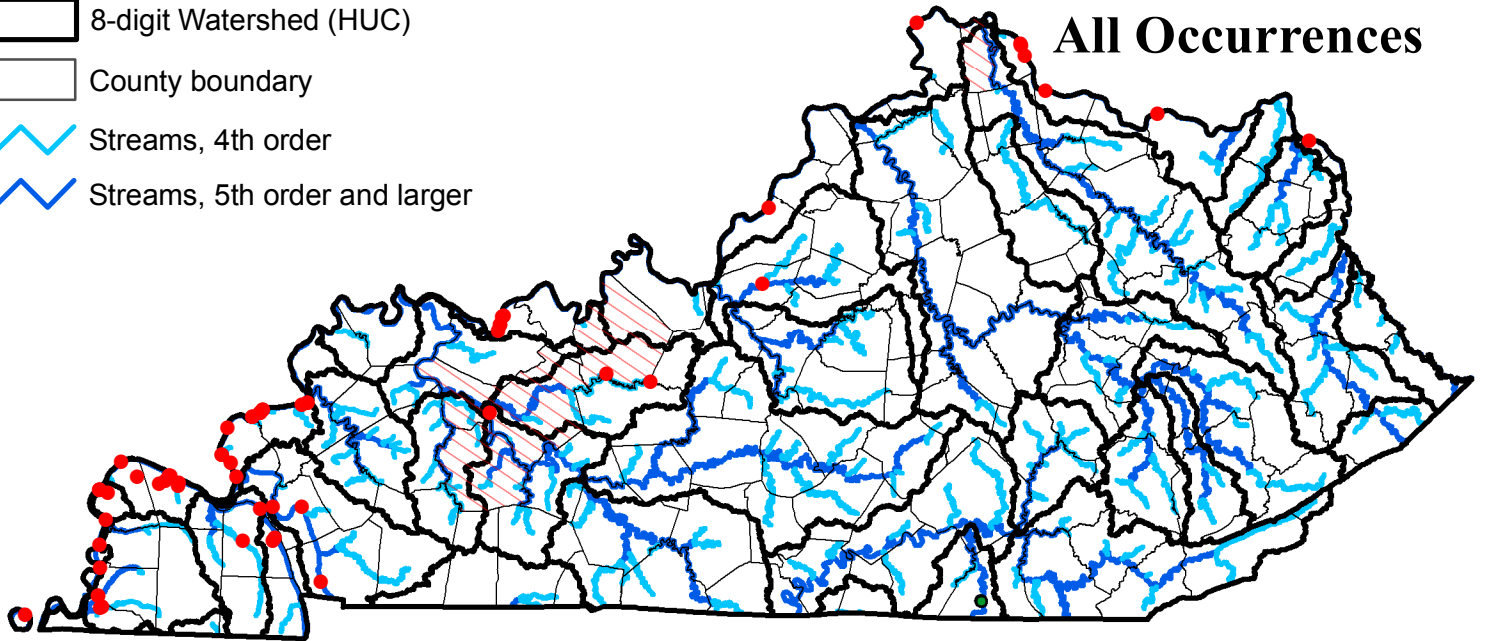


# Black Buffalo

## *Ictiobus niger*

(Data current as of July 15, 2010)

- Point occurrences
- ▨ Quad occurrences
- ▨ County occurrences
- ▭ 8-digit Watershed (HUC)
- ▭ County boundary
- Streams, 4th order
- Streams, 5th order and larger

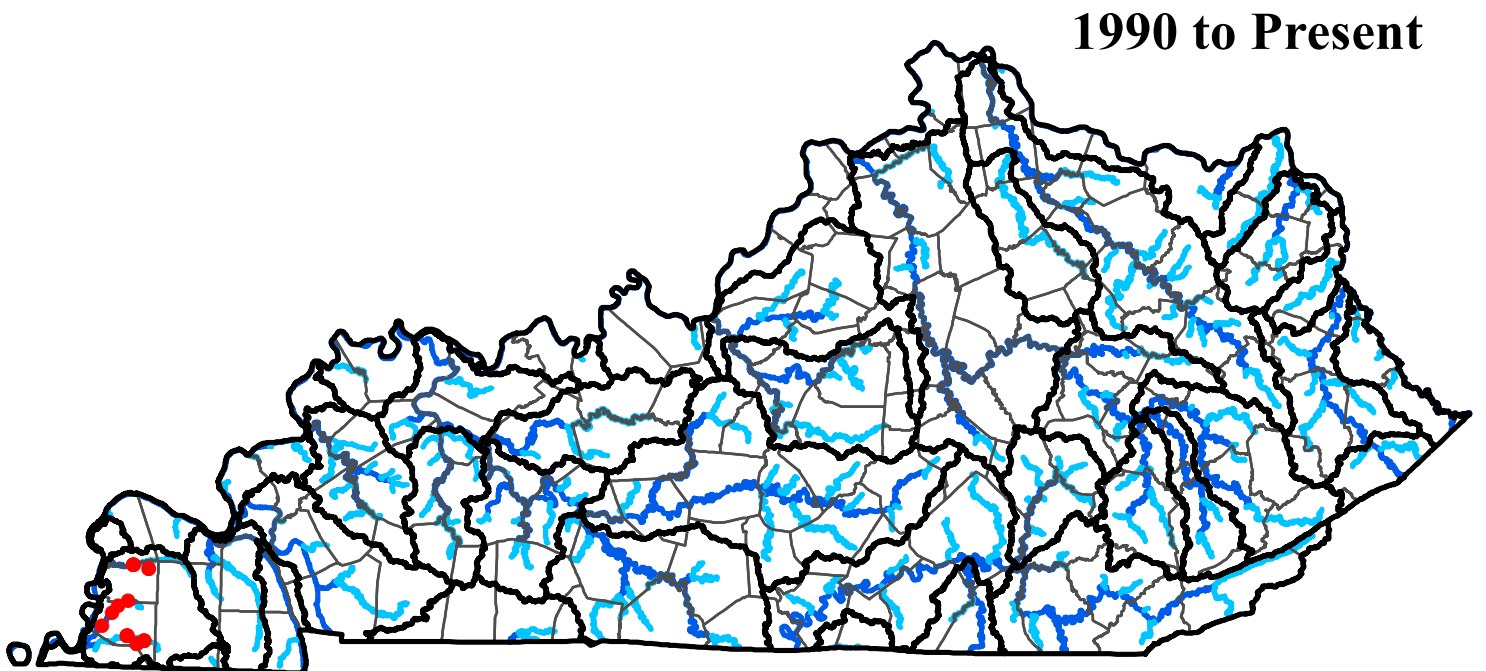
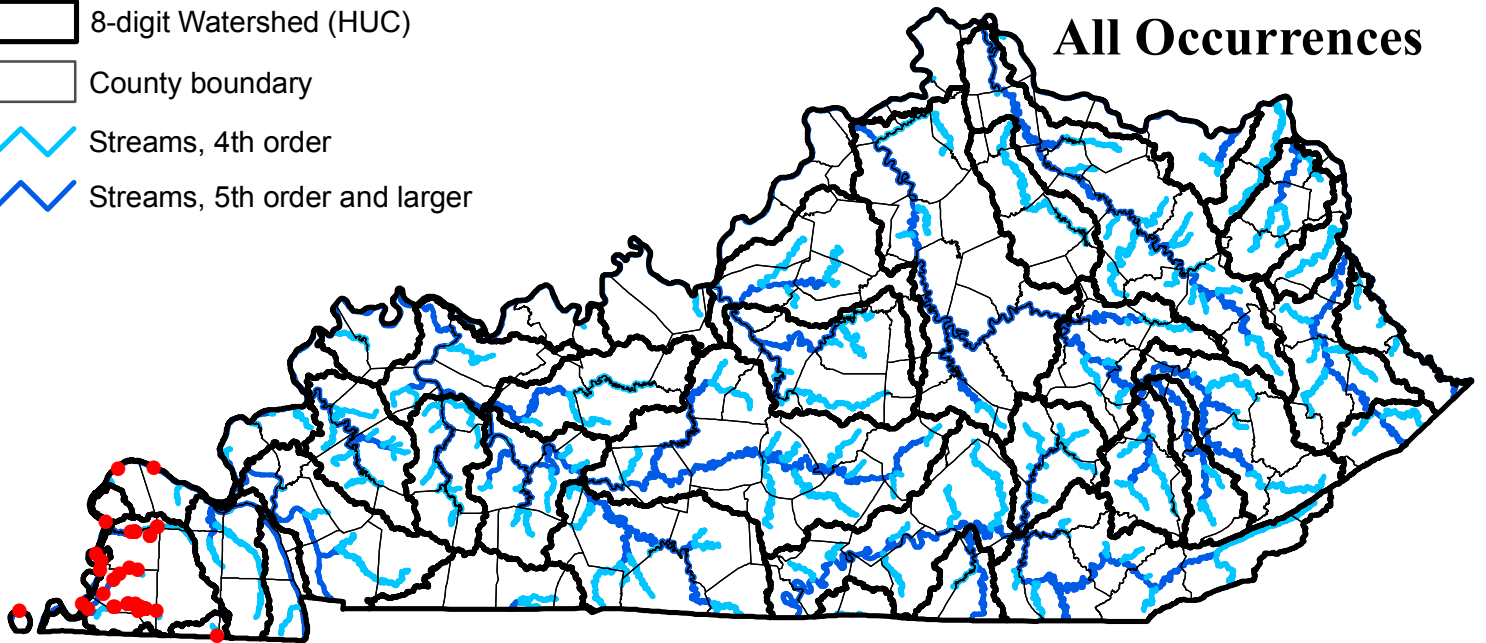


# Blacktail Shiner

## *Cyprinella venusta*

(Data current as of July 15, 2010)

- Point occurrences
- ▒ Quad occurrences
- ▨ County occurrences
- ▭ 8-digit Watershed (HUC)
- ▭ County boundary
- Streams, 4th order
- Streams, 5th order and larger

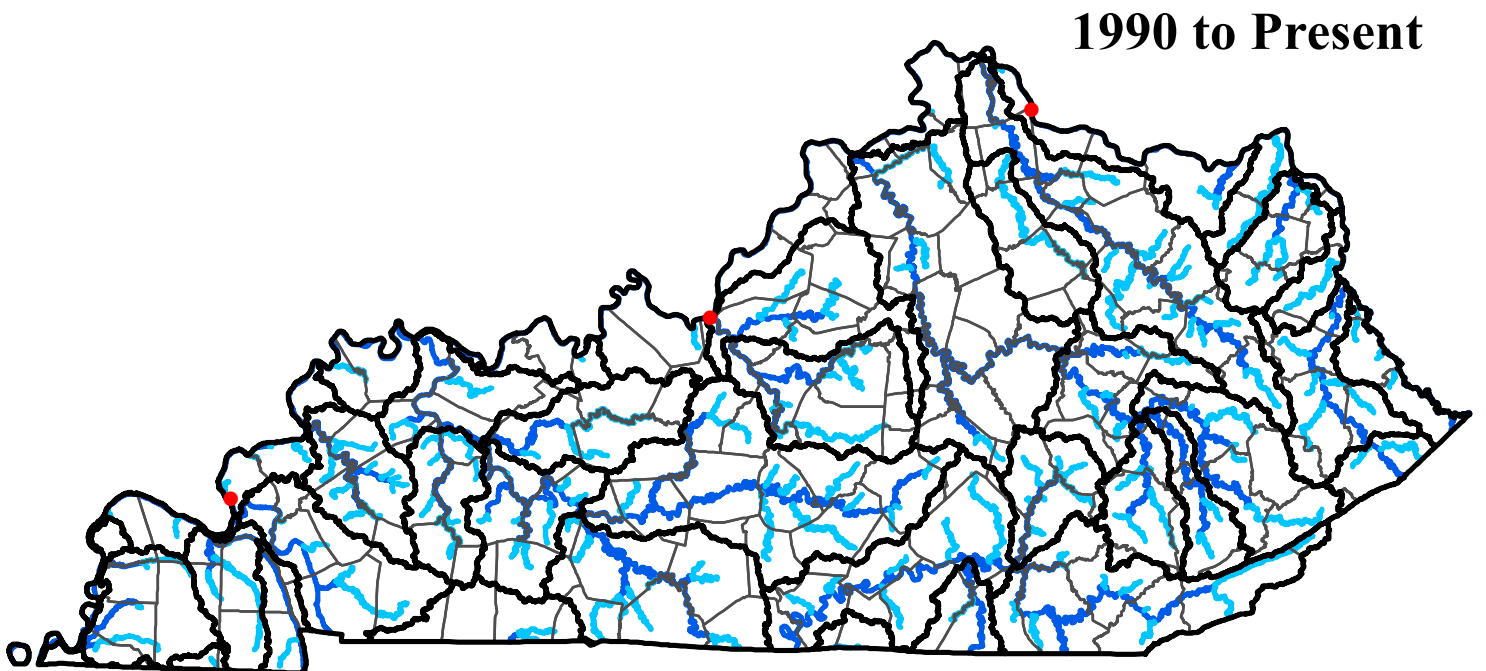
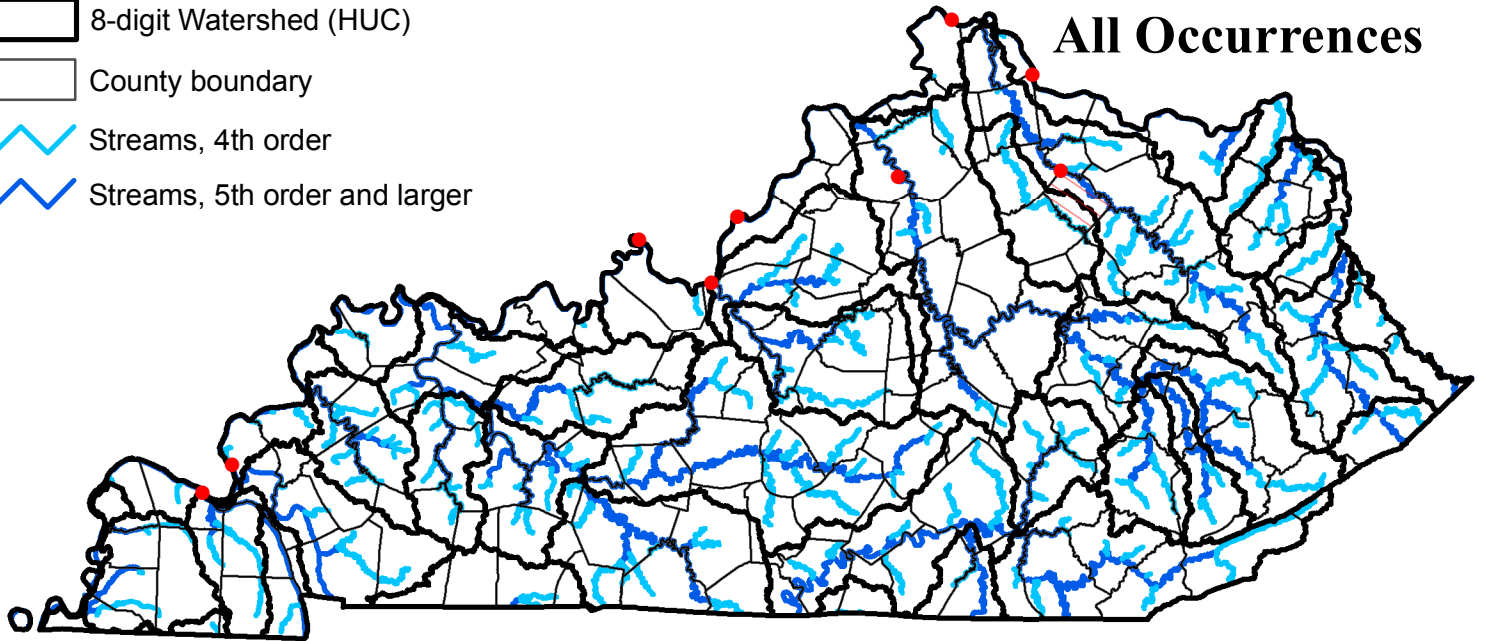


# Burbot

## *Lota lota*

(Data current as of July 15, 2010)

- Point occurrences
- ▨ Quad occurrences
- ▨ County occurrences
- ▭ 8-digit Watershed (HUC)
- ▭ County boundary
- Streams, 4th order
- Streams, 5th order and larger

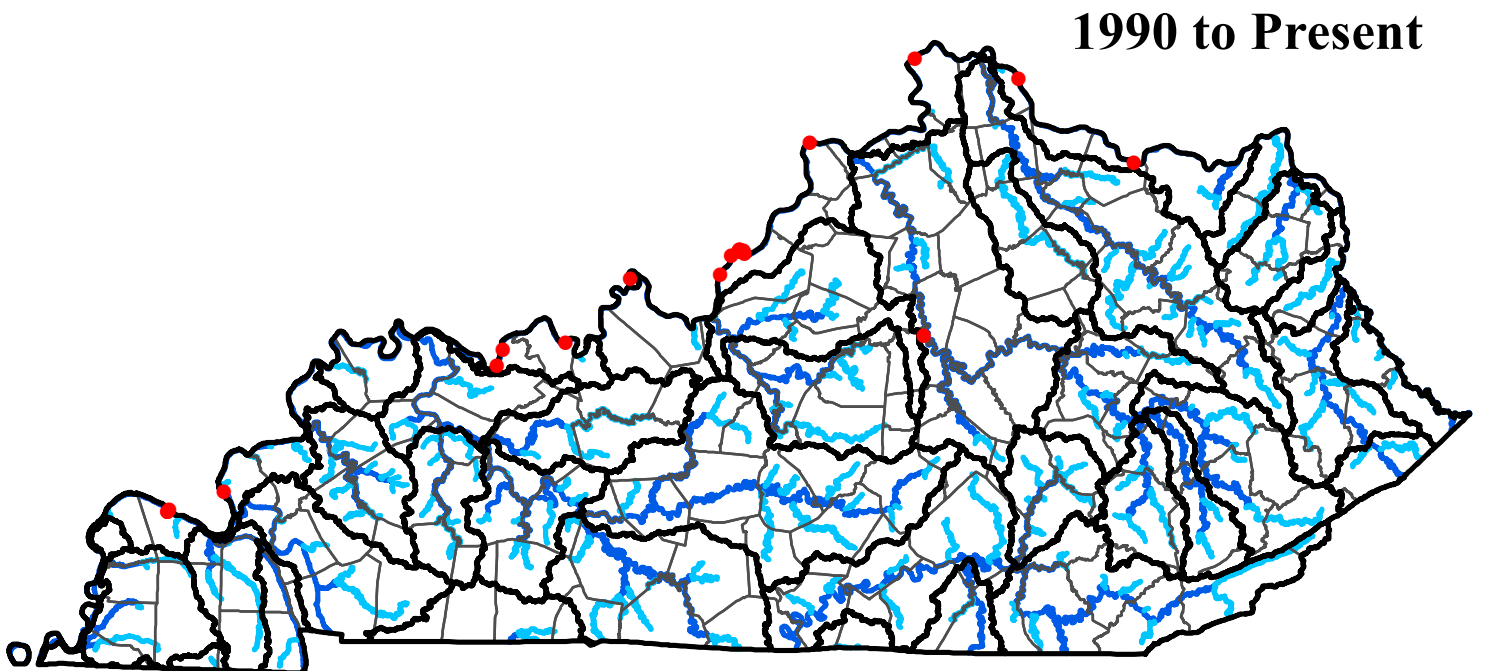
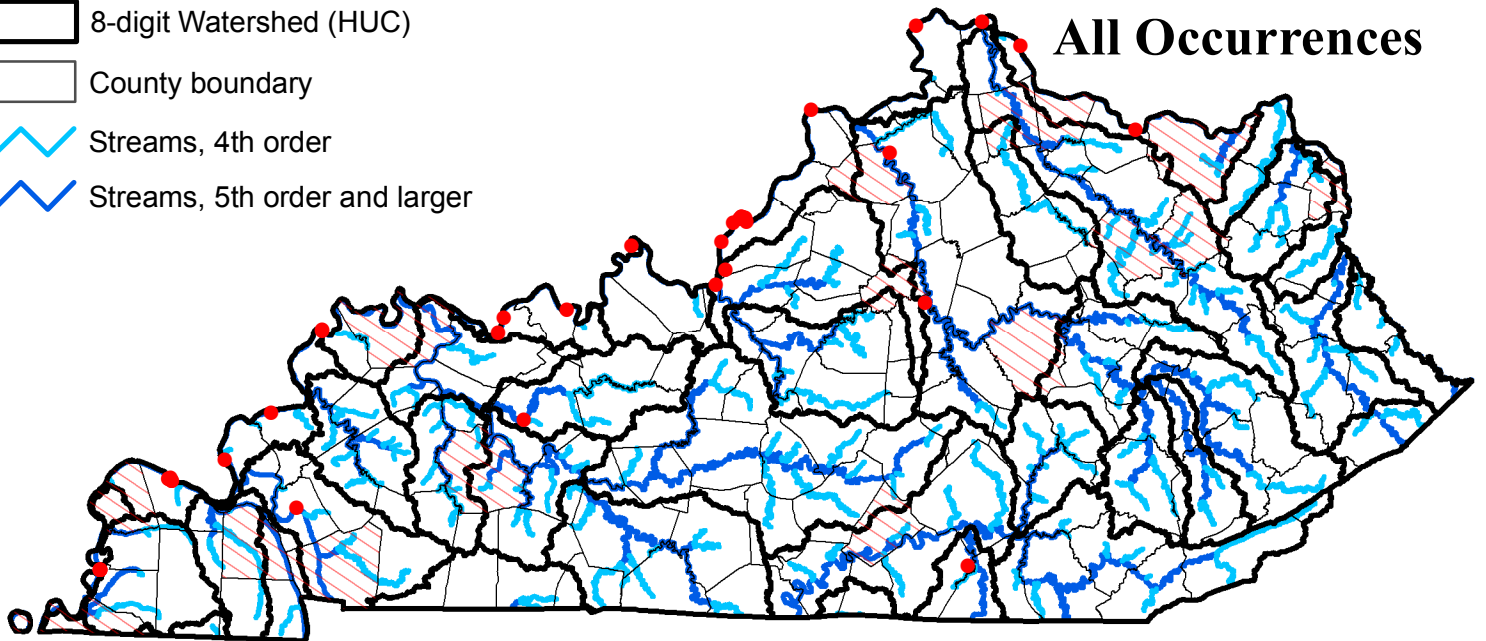


# Paddlefish

## *Polyodon spathula*

(Data current as of July 15, 2010)

- Point occurrences
- ▨ Quad occurrences
- ▨ County occurrences
- ▭ 8-digit Watershed (HUC)
- ▭ County boundary
- Streams, 4th order
- Streams, 5th order and larger

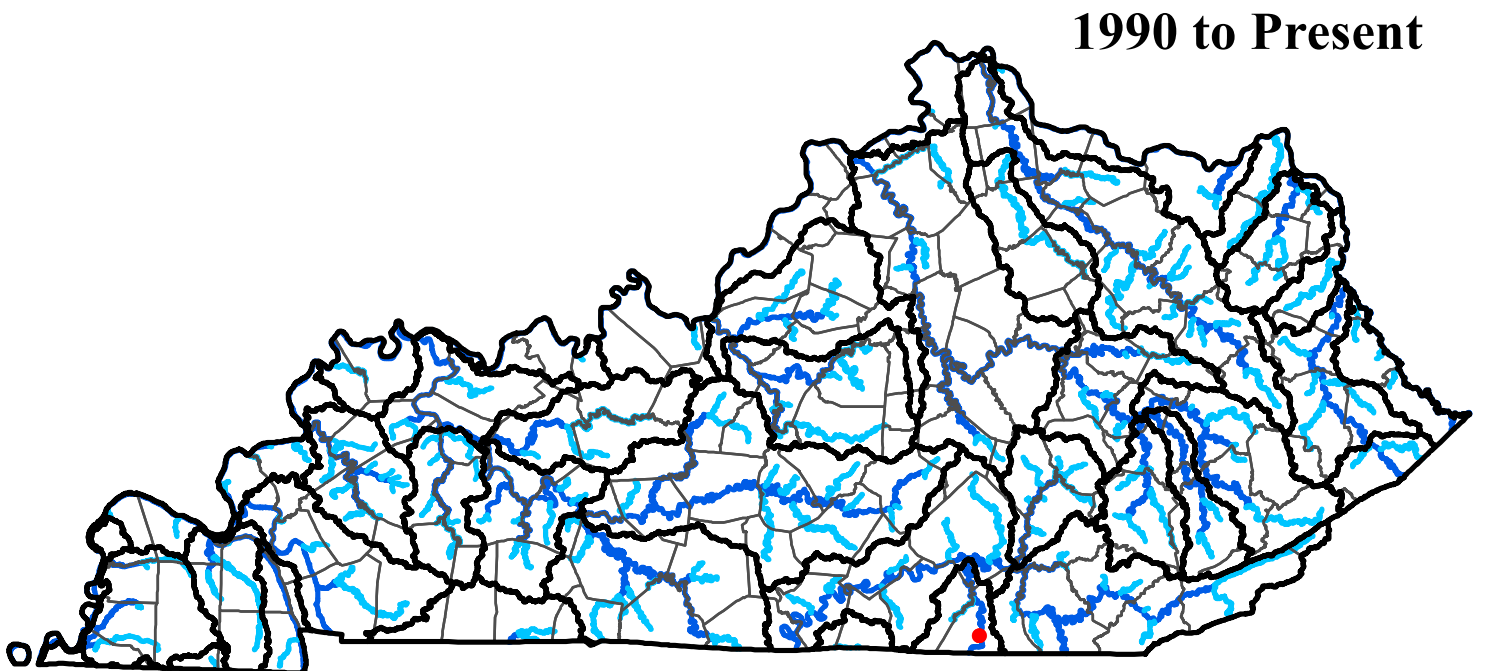
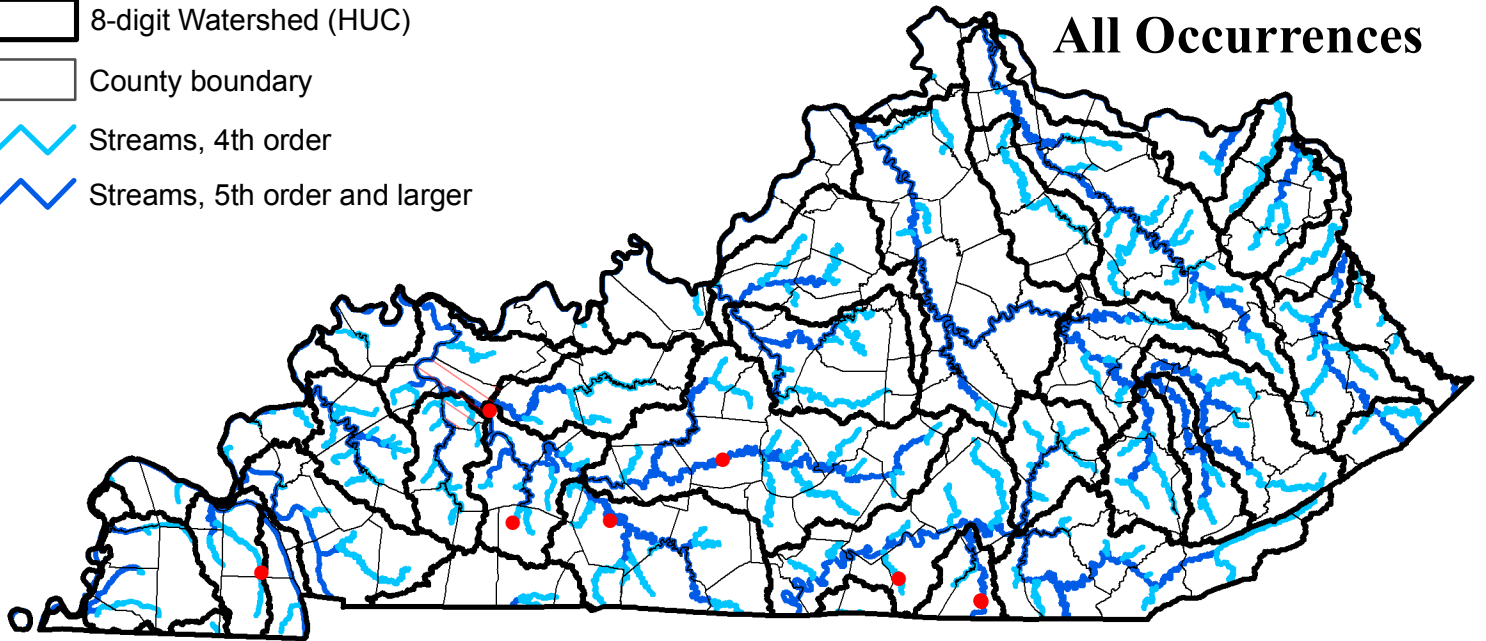


# Pallid Shiner

## *Hybopsis amnis*

(Data current as of July 15, 2010)

- Point occurrences
- ▨ Quad occurrences
- ▨ County occurrences
- ▭ 8-digit Watershed (HUC)
- ▭ County boundary
- Streams, 4th order
- Streams, 5th order and larger

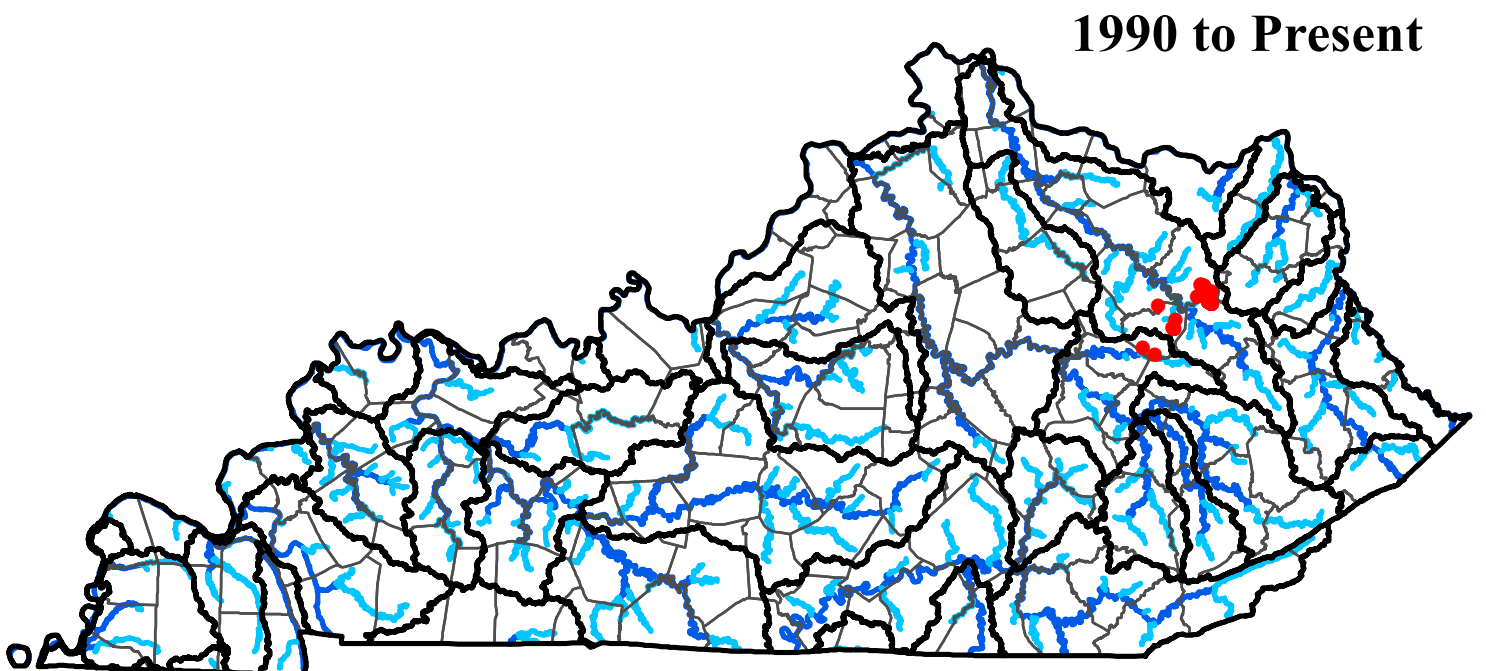
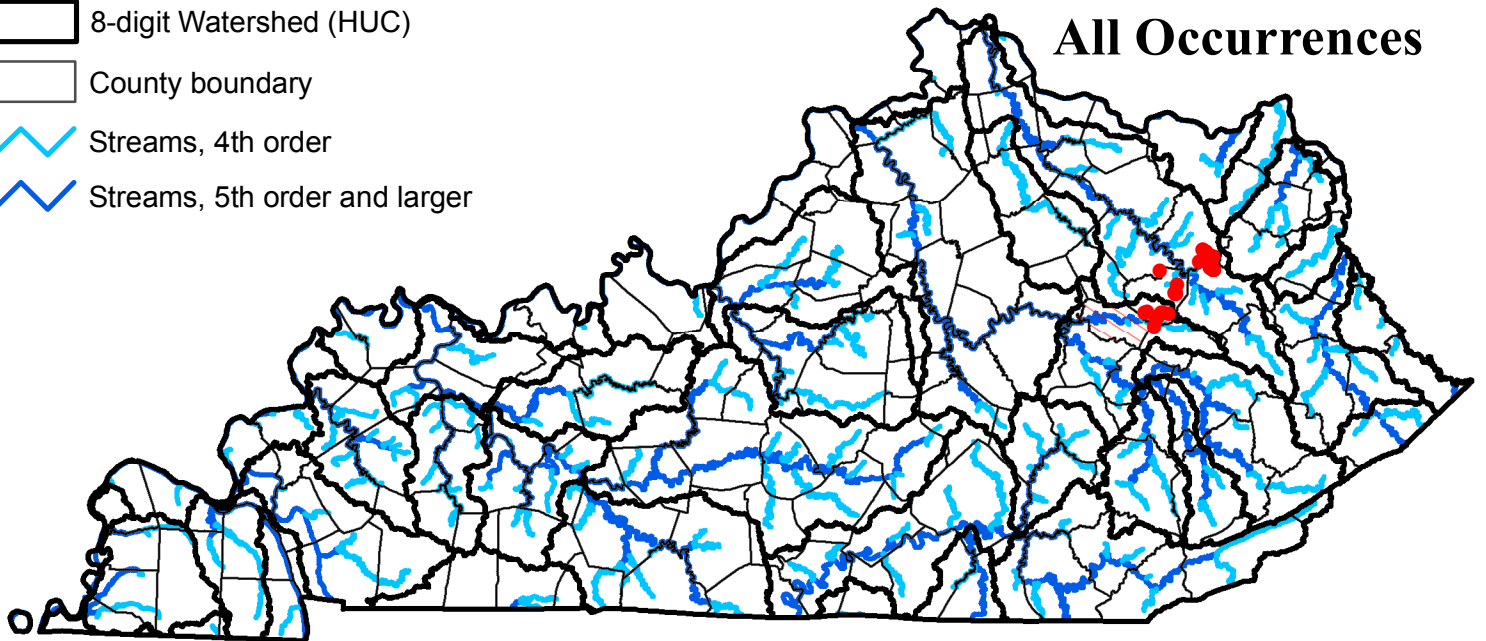


# Redside Dace

## *Clinostomus elongatus*

(Data current as of July 15, 2010)

- Point occurrences
- ▨ Quad occurrences
- ▨ County occurrences
- ▭ 8-digit Watershed (HUC)
- ▭ County boundary
- Streams, 4th order
- Streams, 5th order and larger

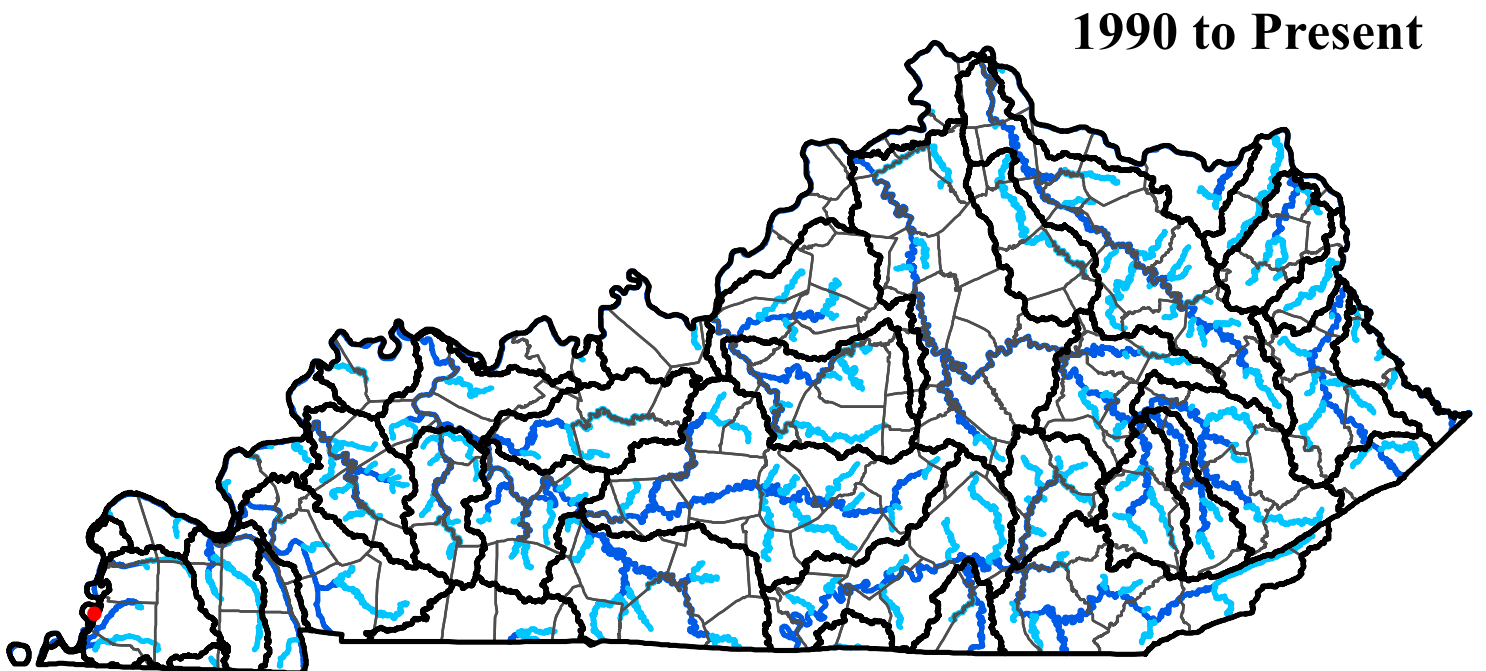
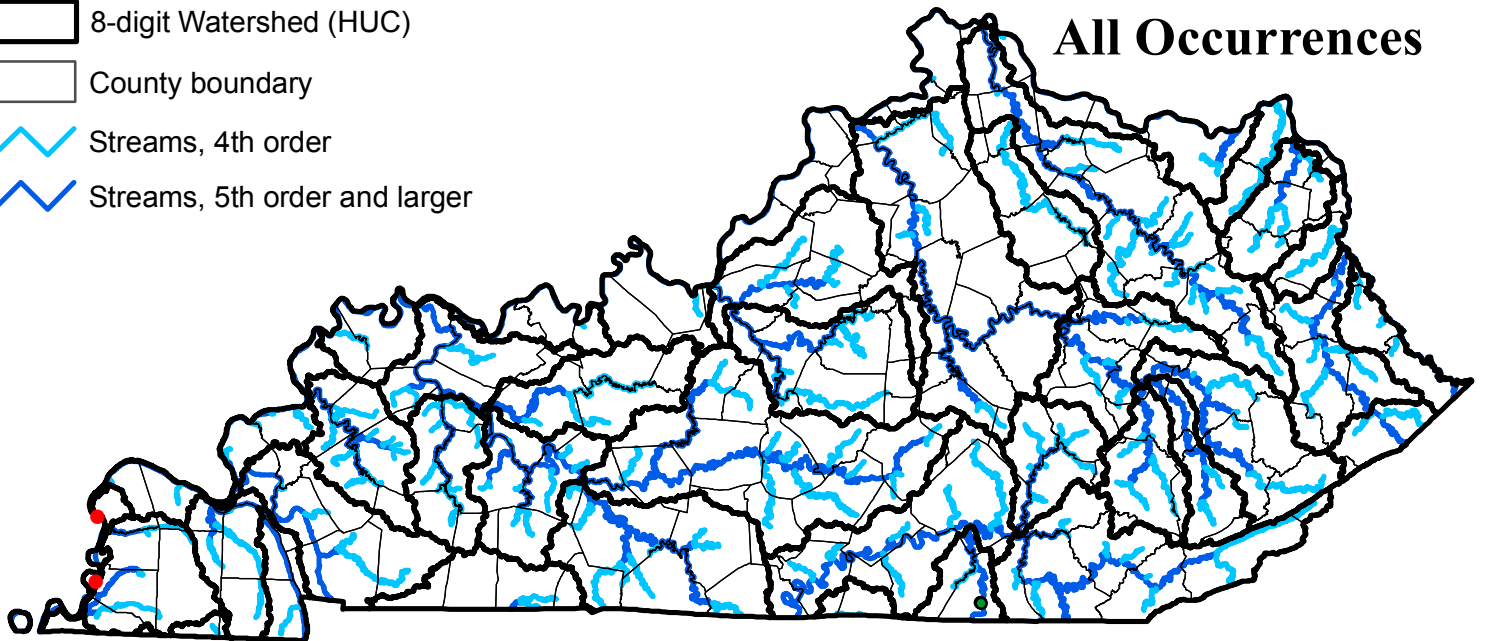


# Sicklefin Chub

## *Macrhybopsis meeki*

(Data current as of July 15, 2010)

- Point occurrences
- ▨ Quad occurrences
- ▨ County occurrences
- ▭ 8-digit Watershed (HUC)
- ▭ County boundary
- ▬ Streams, 4th order
- ▬ Streams, 5th order and larger

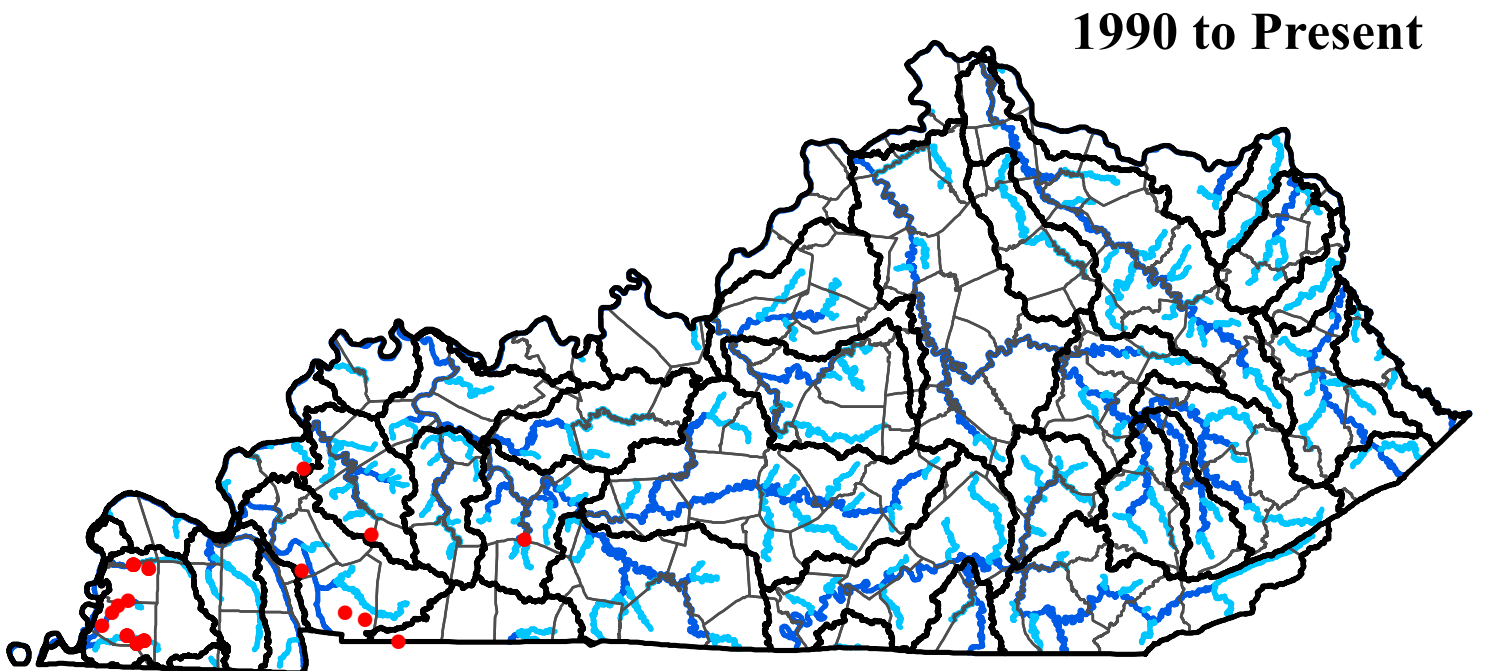
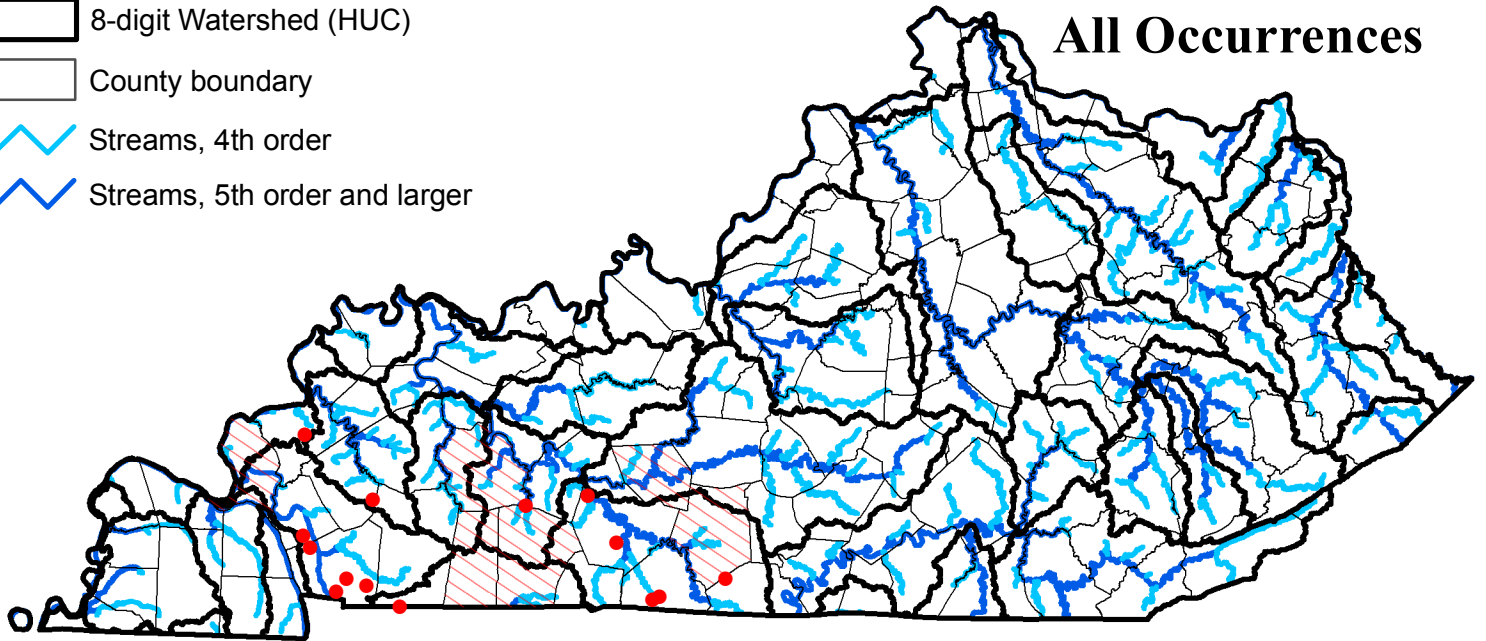


# Spring Cavefish

## *Forbesichthys agassizii*

(Data current as of July 15, 2010)

- Point occurrences
- ▨ Quad occurrences
- ▨ County occurrences
- ▭ 8-digit Watershed (HUC)
- ▭ County boundary
- ▬ Streams, 4th order
- ▬ Streams, 5th order and larger





# Sturgeon Chub

## *Ictiobus niger*

(Data current as of July 15, 2010)

- Point occurrences
- ▨ Quad occurrences
- ▨ County occurrences
- ▭ 8-digit Watershed (HUC)
- ▭ County boundary
- ▬ Streams, 4th order
- ▬ Streams, 5th order and larger

