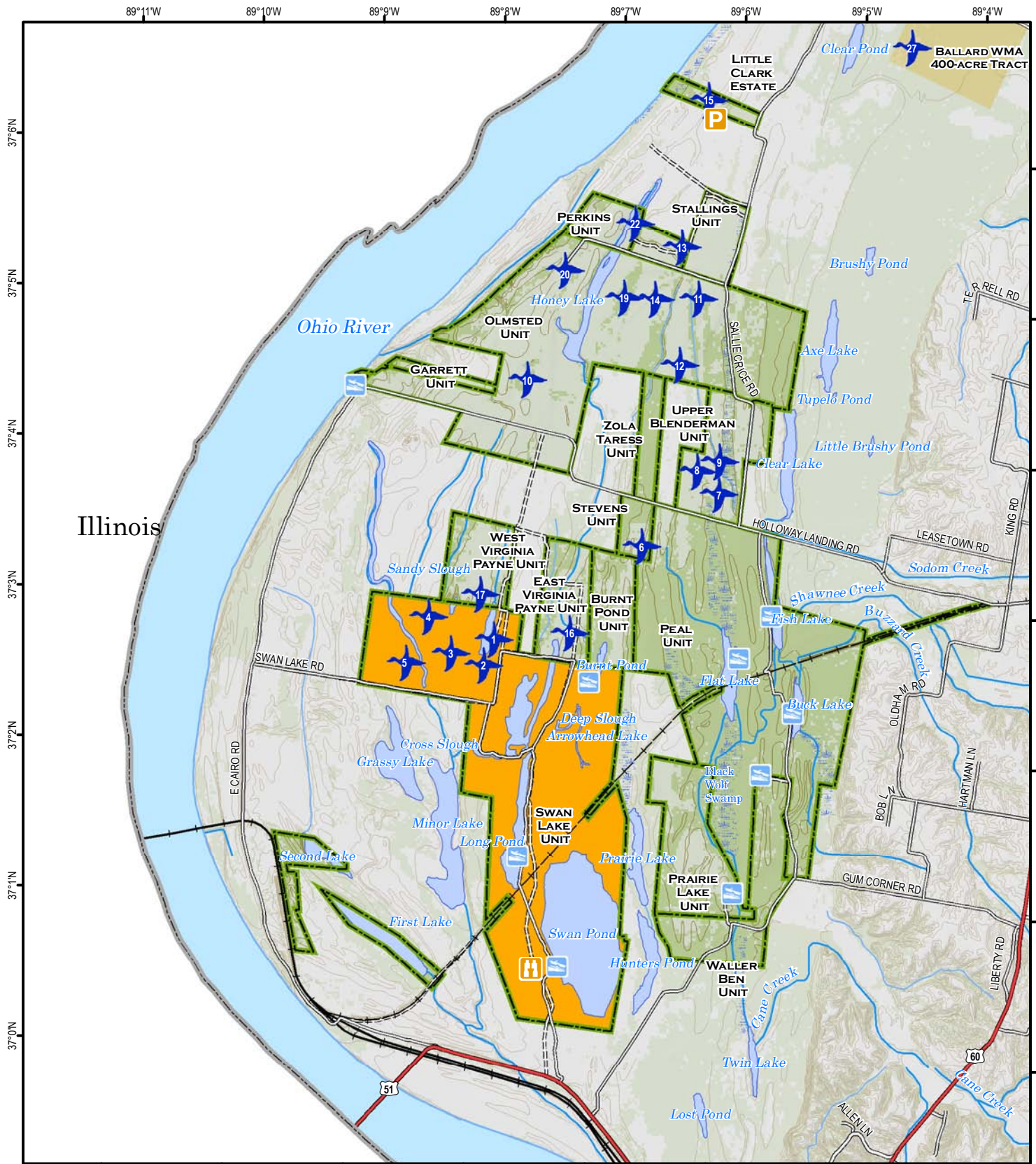
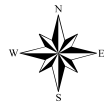


Boatwright Wildlife Management Area



A map legend and additional information are provided on PDF pages that accompany this map.



0 0.5 1 1.5 2 Mile

Map Scale 1:65,000

Contour interval: 10 feet

Note to Map Users

Map prepared by Kentucky Department of Fish & Wildlife Resources (KDFWR). Although KDFWR strives for accuracy, data used to create this map are from a variety of sources and dates; as such, KDFWR makes no representations regarding the accuracy or fitness for use of the information furnished herein.

Publication Date: 6/17/2011



Boatwright WMA Information

Public Hunting Area Location



Regional Locator



WMA Overview

Location & Size: Ballard County, 8,383 acres

Contact (270) 224-2244

Elevation minimum 295 feet, maximum 361 feet.

Area Habitat mostly wetland: open land 34%, forest 17%, wetland 39%, open water 10%.

Directions & Description:

- Peal Unit (1,724 acres): 4 miles west of Barlow on Mounds City Landing Road. River bottomland with marshlands and cypress swamps; 2 roads, access to 3 oxbow lakes. Special regulations for waterfowl hunting.
- Upper Blenderman Unit (204 acres): same address as Peal. Special regulations for waterfowl hunting.
- Zola Taress Unit (100 acres): same address as Peal. Open under statewide regulations.
- Stevens Unit (73 acres): same address as Peal. Special regulations for waterfowl hunting.
- Swan Lake Unit (2,200 acres): 6 miles northwest of Wickliffe on US 51/60. Primarily bottomland and flood plain area of the Ohio River, with several lakes and some interior gravel roads. Wintering ring-billed and herring gulls, double-crested cormorants, waterfowl, bald eagles. Special regulations for hunting, advance application for waterfowl hunting. Except for designated observation area, Swan Lake Unit closed Oct. 15-March 15 as waterfowl refuge. Public hunting closed when floodwaters prevent safe entry to blinds by wheeled vehicles. Fishing and boating available. Open under statewide regulations.
- Olmsted Unit (2,096 acres): 4 miles west of Barlow on Salle Crice Road. Special regulations for waterfowl hunting.
- Other units include the Stalling Unit (148 acres) and the Perkins Unit (160 acres).

For more online information about this public hunting area [click here](#).

Online Resources

Public Hunting Area users must abide by the Kentucky hunting, trapping, and fishing regulations. It is incumbent on persons using Public Hunting Areas to become familiar with these regulations. Kentucky Department of Fish & Wildlife Resources provides these regulations on our Web site at fw.ky.gov or by calling 1-800-858-1549. If you are viewing this as a PDF, clicking on the links below will direct your browser to our regulations and maps.

Guides and Publications

- Spring Turkey and Squirrel Guide
- Waterfowl Guide
- Fishing and Boating Guide
- Spring Turkey and Squirrel Guide
- Hunting Guide for Dove, Wood Duck, Teal, Woodcock, Snipe, and Crow
- Kentucky Hunting and Trapping Guide
- ADA Accessible Hunting Sites
- A Guide to Wildlife Management Areas in Kentucky

Maps and Geographic Information

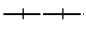
- [Game Zone – Seasons Maps](#)
- [Wildlife Management Areas/Public Hunting Areas](#)
- [Other KDFWR Maps](#)
- [A Guide to Public Hunting Areas in Kentucky](#)
- [Google Maps – Statewide Public Hunting Area Locations](#)
- [Google Earth Files for Public Hunting Areas, boating and fishing access locations](#)
- [GPS Files for Public Hunting Areas, boating and fishing access locations](#)
- [Interactive Hunting and Fishing Areas Mapper](#)

Wildlife Management Area Map Notes & Legend

NOTE TO MAP USERS:

For most WMA maps the landscape is depicted using a combination of elevation contours, hillshading and a green tint indicating woodland areas that is derived from satellite imagery. On WMAs that are relatively small or have a history of surface mining aerial photography is used.

WMA Map Legend

	WMA Office		WMA Boundary		Populated Place
	Information Kiosk		Aerial photograph		Kentucky Boundary
	Check station		Other Public Hunting Areas		Interstate Highway
	Mobility-impaired Hunting Blind		Elk Hunting Units		Kentucky Parkway
	Trailhead		Area Off Limits		U.S. Highway
	Horseback Trailhead		No Hunting		State Highway
	Parking Lot		Seasonally Restricted Access *		Local Road
	Picnic Area		Mobility Impaired Hunting Area		Forest Service Road
	Restrooms		Primitive Hunting Only		Active Railroad
	Wildlife Viewing Site		Foot Traffic Only		Abandoned Railroad
	Interpretive Site		Open Water		Federal Recreation Trail
	Retriever Training Site		Wetland		State Park Trail
	Gate		Woodland		WMA Road
	Campground				WMA Foot Trail
	Cemetery				WMA Horse Trail
	Corps of Engineers Office				Gas Pipeline
	Waterfowl Blind				Powerline
	Shooting Range				Rivers and Streams
	Established Bank Access				Dam
	Fishing Pier				Trout Waters
	Carrydown Launch				Elevation Contour
	Small Boat Ramp				
	Large Boat Ramp				
	State Park Office				