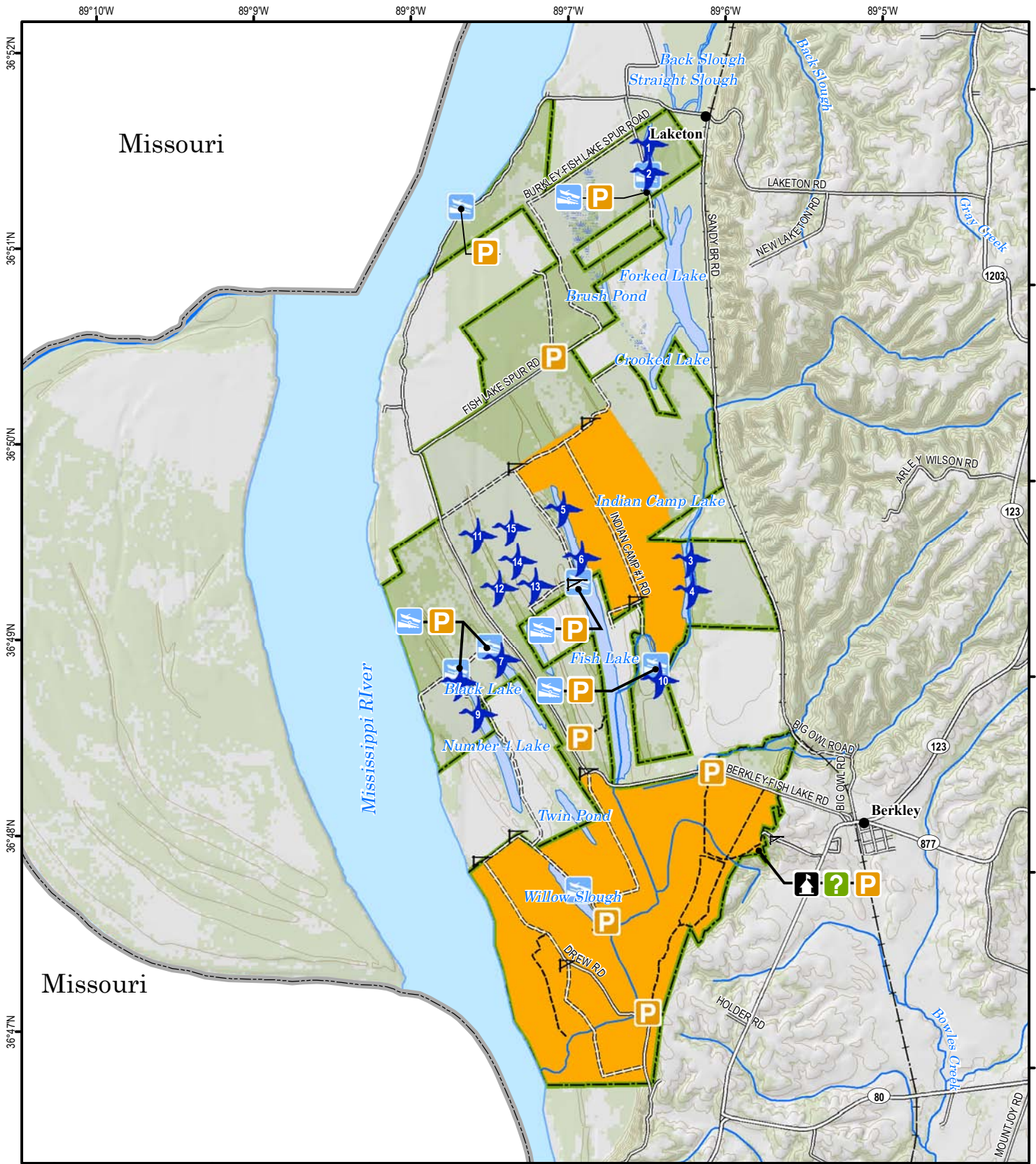
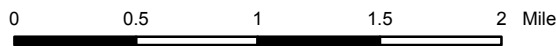
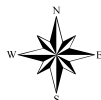


# Doug Travis Wildlife Management Area



A map legend and additional information are provided on PDF pages that accompany this map.

Publication Date: 6/22/2011



Scale 1:50,000

Contour interval: 20 feet



## Note to Map Users

Map prepared by Kentucky Department of Fish & Wildlife Resources (KDFWR). Although KDFWR strives for accuracy, data used to create this map are from a variety of sources and dates; as such, KDFWR makes no representations regarding the accuracy or fitness for use of the information furnished herein.

# Doug Travis WMA Information

## Public Hunting Area Location



## Regional Locator



## WMA Overview

**Location & Size:** Carlisle & Hickman counties, 4,141 acres

**Contact** (270) 488-3233

**Elevation** minimum 280 feet, maximum 456 feet.

**Area Habitat** mostly forest: open land 28%, forest 37%, wetland 19%, open water 17%.

**Directions & Description:** South of Wickliffe along Mississippi River. From Paducah, take Hwy. 62 (west) to Bardwell, then pick up Hwy. 123 to its intersection with Hwy. 877 at Berkley. Continue south on Hwy. 123 to the WMA office driveway on the right less than ½ mile from the intersection. From Wickliffe, take Hwy. 51(south) to Bardwell and pick up Hwy. 123 to Berkley.

Bottomland hardwood forest, cypress sloughs, moist-soil units and cropland. Several oxbow lakes for fishing from bank or small boats. Great blue heron rookery. Populations of deer, turkey, squirrel, furbearers and waterfowl exist on the area. Open to statewide hunting regulations, except special regulations apply for waterfowl hunting on portions of the area..

Portions of the area are closed to all access Nov. 1-March 15. Owned by Ky. Dept. Fish and Wildlife Resources.

For more online information about this public hunting area [click here](#).

## Online Resources

Public Hunting Area users must abide by the Kentucky hunting, trapping, and fishing regulations. It is incumbent on persons using Public Hunting Areas to become familiar with these regulations. Kentucky Department of Fish & Wildlife Resources provides these regulations on our Web site at [fw.ky.gov](http://fw.ky.gov) or by calling 1-800-858-1549. If you are viewing this as a PDF, clicking on the links below will direct your browser to our regulations and maps.

## Guides and Publications

- Spring Turkey and Squirrel Guide
- Waterfowl Guide
- Fishing and Boating Guide
- Spring Turkey and Squirrel Guide
- Hunting Guide for Dove, Wood Duck, Teal, Woodcock, Snipe, and Crow
- Kentucky Hunting and Trapping Guide
- ADA Accessible Hunting Sites
- A Guide to Wildlife Management Areas in Kentucky

## Maps and Geographic Information



- [Game Zone – Seasons Maps](#)
- [Wildlife Management Areas/Public Hunting Areas](#)
- [Other KDFWR Maps](#)
- [A Guide to Public Hunting Areas in Kentucky](#)
- [Google Maps – Statewide Public Hunting Area Locations](#)
- [Google Earth Files for Public Hunting Areas, boating and fishing access locations](#)
- [GPS Files for Public Hunting Areas, boating and fishing access locations](#)
- [Interactive Hunting and Fishing Areas Mapper](#)

# Wildlife Management Area Map Notes & Legend

## NOTE TO MAP USERS:

For most WMA maps the landscape is depicted using a combination of elevation contours, hillshading and a green tint indicating woodland areas that is derived from satellite imagery. On WMAs that are relatively small or have a history of surface mining aerial photography is used.

## WMA Map Legend

	WMA Office		WMA Boundary		Populated Place
	Information Kiosk		Aerial photograph		Kentucky Boundary
	Check station		Other Public Hunting Areas		Interstate Highway
	Mobility-impaired Hunting Blind		Elk Hunting Units		Kentucky Parkway
	Trailhead		Area Off Limits		U.S. Highway
	Horseback Trailhead		No Hunting		State Highway
	Parking Lot		Seasonally Restricted Access *		Local Road
	Picnic Area		Mobility Impaired Hunting Area		Forest Service Road
	Restrooms		Primitive Hunting Only		Active Railroad
	Wildlife Viewing Site		Foot Traffic Only		Abandoned Railroad
	Interpretive Site		Open Water		Federal Recreation Trail
	Retriever Training Site		Wetland		State Park Trail
	Gate		Woodland		WMA Road
	Campground				WMA Foot Trail
	Cemetery				WMA Horse Trail
	Corps of Engineers Office				Gas Pipeline
	Waterfowl Blind				Powerline
	Shooting Range				Rivers and Streams
	Established Bank Access				Dam
	Fishing Pier				Trout Waters
	Carrydown Launch				Elevation Contour
	Small Boat Ramp				
	Large Boat Ramp				
	State Park Office				