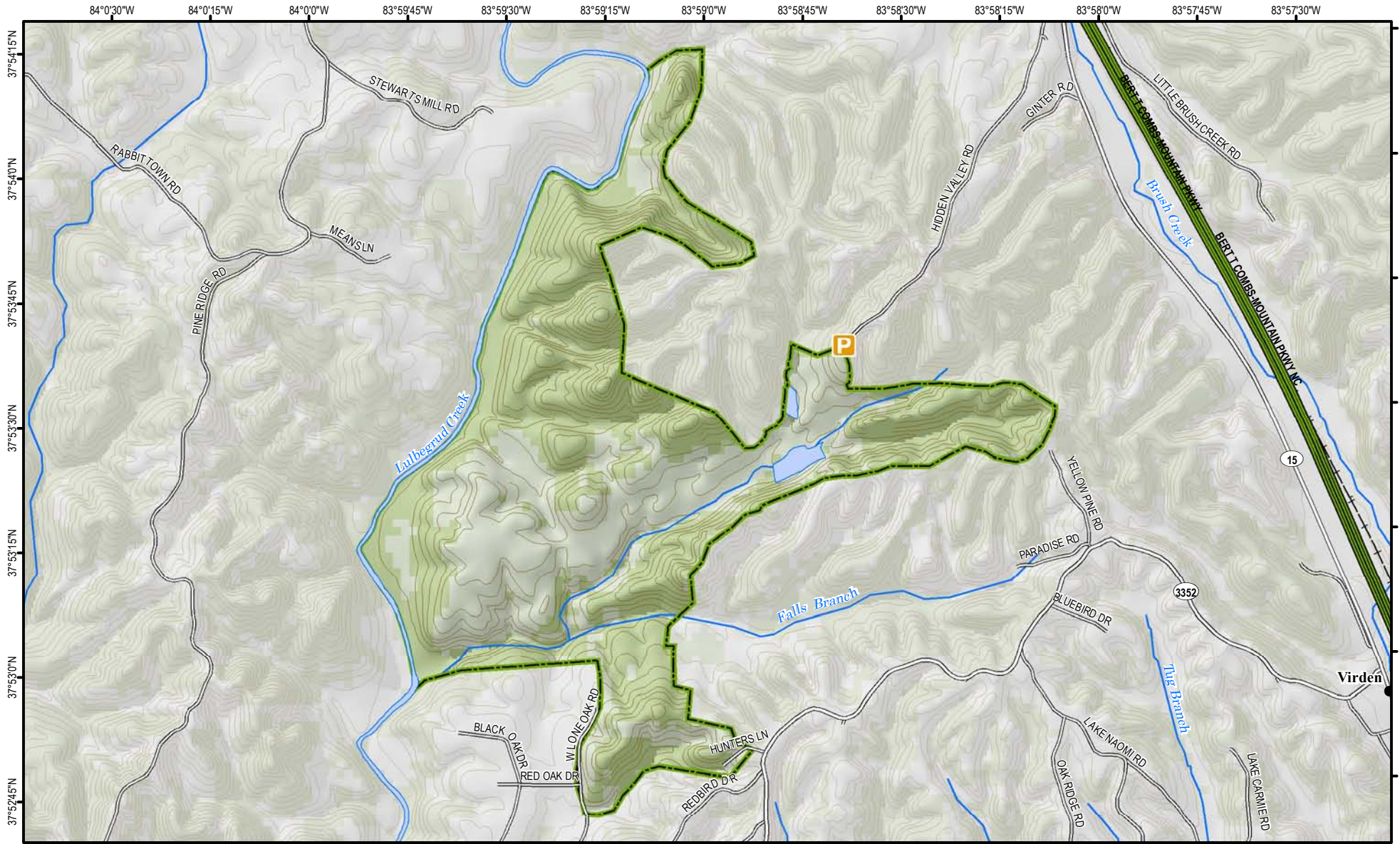
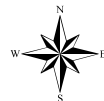


Hidden Valley Training Area



A map legend and additional information are provided on PDF pages that accompany this map.

Publication Date: 6/14/2011



0 0.1 0.2 0.3 0.4 0.5 Mile

Scale 1:20,000

Contour interval: 20 feet



Note to Map Users

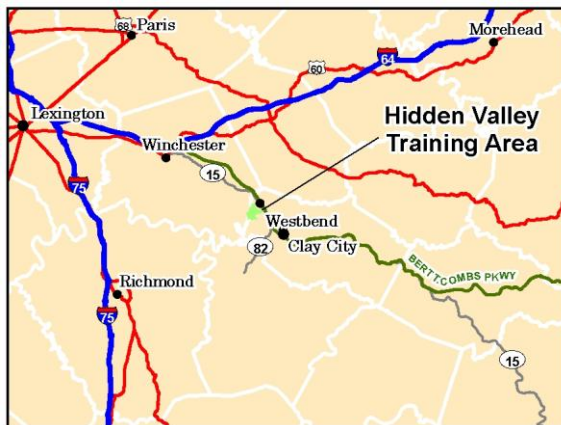
Map prepared by Kentucky Department of Fish & Wildlife Resources (KDFWR). Although KDFWR strives for accuracy, data used to create this map are from a variety of sources and dates; as such, KDFWR makes no representations regarding the accuracy or fitness for use of the information furnished herein.

Hidden Valley Training Area Information

Public Hunting Area Location



Regional Locator



WMA Overview

Location & Size: Powell County, 551 acres

Contact 1-800-858-1549

Elevation minimum 620 feet, maximum 880 feet.

Area Habitat mostly forest: open land 36%, forest 60%, wetland 3%, open water 1%.

Directions & Description: The area is located west of Stanton, KY, near Westbend on Hidden Valley Road. Directions from Clay City: From the intersection of Hwy 82 travel North on Hwy 15 3.1

miles. Turn Left on Hidden Valley Road and travel 1.0 mile to the area.

This 542 acre hunting area lies in Northeastern Powell County. The area is mostly forested but also encompasses approximately 150 acres of open land and the terrain ranges from gently sloping to moderately steep hillsides.

No ATV's, camping, or horseback riding is allowed on the area. Public hunting is provided by an agreement between the Kentucky National Guard and the Kentucky Department of Fish and Wildlife Resources. 606-878-9595 Owned by Kentucky National Guard. The area is occasionally utilized by the Kentucky National Guard for training purposes and visitors should make adjustments to their schedule as necessary.

Please refer to the current Hunting and Trapping Guide for open dates.

For more online information about this public hunting area [click here](#).

Online Resources

Public Hunting Area users must abide by the Kentucky hunting, trapping, and fishing regulations. It is incumbent on persons using Public Hunting Areas to become familiar with these regulations. Kentucky Department of Fish & Wildlife Resources provides these regulations on our Web site at fw.ky.gov or by calling 1-800-858-1549. If you are viewing this as a PDF, clicking on the links below will direct your browser to our regulations and maps.

Guides and Publications

- Hunting and Trapping
- Spring Turkey and Squirrel
- Waterfowl
- Dove, Wood Duck, Teal, Woodcock, Snipe, and Crow
- ADA Accessible Hunting Sites
- A Guide to Wildlife Management Areas in Kentucky
- Fishing and Boating Guide

Maps and Geographic Information

- [Game Zone – Seasons Maps](#)
- [Wildlife Management Areas/Public Hunting Areas](#)
- [Other KDFWR Maps](#)
- [A Guide to Public Hunting Areas in Kentucky](#)
- [Google Maps – Statewide Public Hunting Area Locations](#)
- [Google Earth Files for Public Hunting Areas, boating and fishing access locations](#)
- [GPS Files for Public Hunting Areas, boating and fishing access locations](#)
- [Interactive Hunting and Fishing Areas Mapper](#)

Wildlife Management Area Map Notes & Legend

NOTE TO MAP USERS:

For most WMA maps the landscape is depicted using a combination of elevation contours, hillshading and a green tint indicating woodland areas that is derived from satellite imagery. On WMAs that are relatively small or have a history of surface mining aerial photography is used.

WMA Map Legend

	WMA Office		WMA Boundary		Populated Place
	Information Kiosk		Aerial photograph		Kentucky Boundary
	Check station		Other Public Hunting Areas		Interstate Highway
	Mobility-impaired Hunting Blind		Elk Hunting Units		Kentucky Parkway
	Trailhead		Area Off Limits		U.S. Highway
	Horseback Trailhead		No Hunting		State Highway
	Parking Lot		Seasonally Restricted Access *		Local Road
	Picnic Area		Mobility Impaired Hunting Area		Forest Service Road
	Restrooms		Primitive Hunting Only		Active Railroad
	Wildlife Viewing Site		Foot Traffic Only		Abandoned Railroad
	Interpretive Site		Open Water		Federal Recreation Trail
	Retriever Training Site		Wetland		State Park Trail
	Gate		Woodland		WMA Road
	Campground				WMA Foot Trail
	Cemetery				WMA Horse Trail
	Corps of Engineers Office				Gas Pipeline
	Waterfowl Blind				Powerline
	Shooting Range				Rivers and Streams
	Established Bank Access				Dam
	Fishing Pier				Trout Waters
	Carrydown Launch				Elevation Contour
	Small Boat Ramp				
	Large Boat Ramp				
	State Park Office				