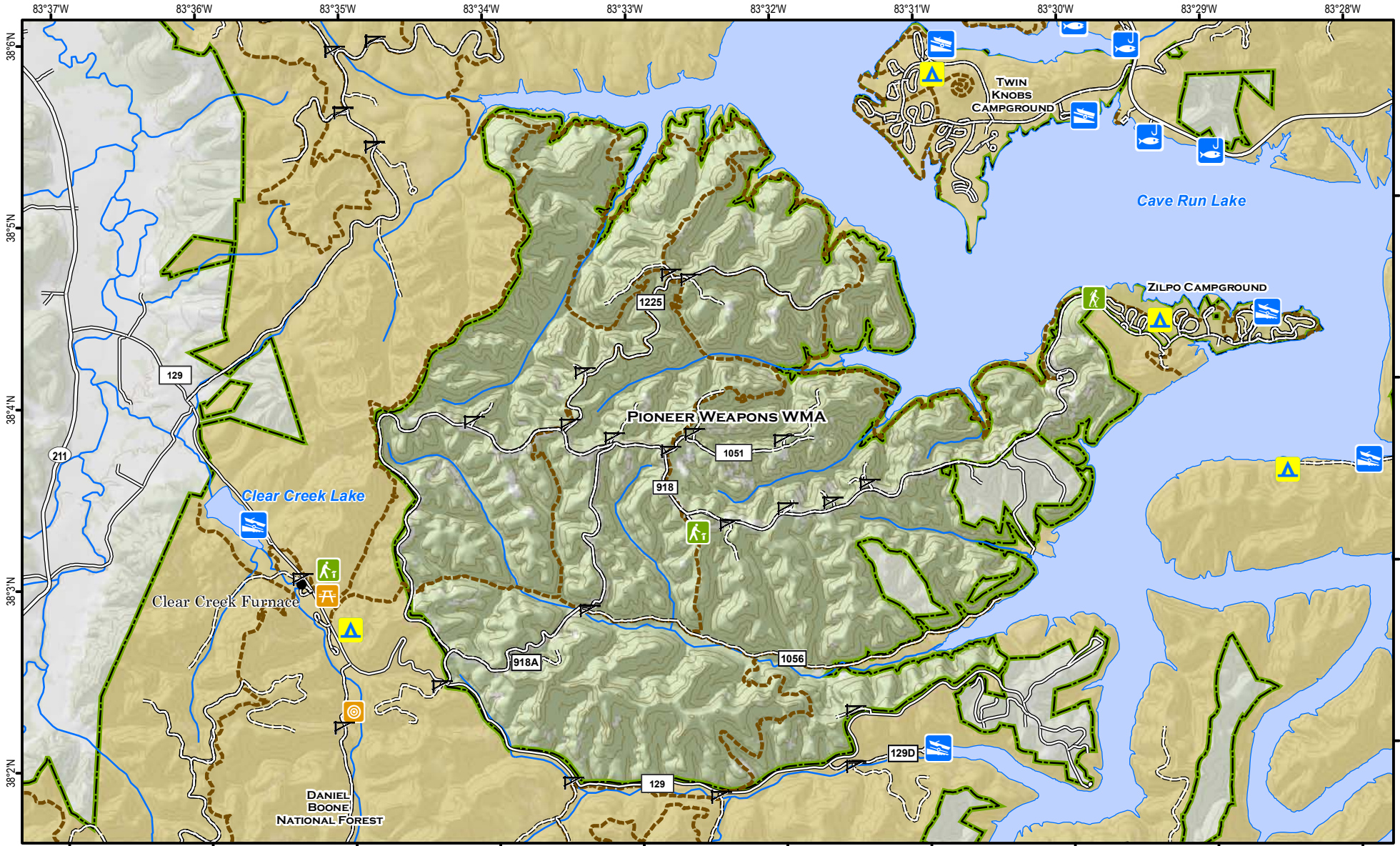


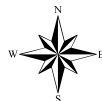


Pioneer Weapons Wildlife Management Area



A map legend and additional information are provided on PDF pages that accompany this map.

Publication Date: 2/02/2011



0 0.25 0.5 0.75 1 Mile



Scale 1:55,000

Contour interval: 100 feet



Note to Map Users

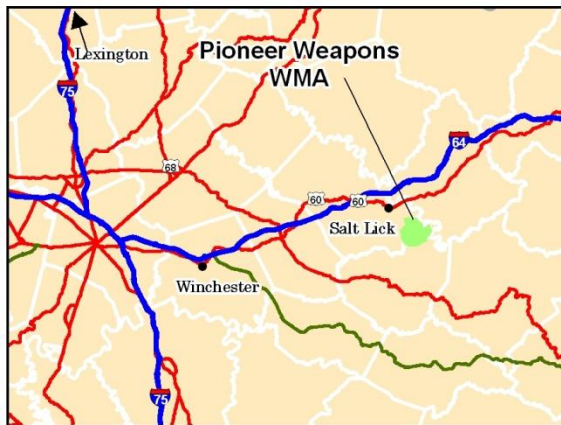
Map prepared by Kentucky Department of Fish & Wildlife Resources (KDFWR). Although KDFWR strives for accuracy, data used to create this map are from a variety of sources and dates; as such, KDFWR makes no representations regarding the accuracy or fitness for use of the information furnished herein.

Pioneer Weapons WMA Information

Public Hunting Area Location



Regional Locator



WMA Overview

Location & Size: Bath & Menifee counties, 7,731 acres.

Contact: Cumberland Ranger District (606) 784-6428; Daniel Boone National Forest, Supervisor's Office (606) 745-3100

Elevation minimum 744 feet, maximum 1315 feet.

Area Habitat mostly forest: open land 5%, forest 98%, wetland 0%, open water 0%.

Directions & Description: Take Hwy. 211 south of Salt Lick to Clear Creek Road (FR 129) and follow to arrive at area. Road access within the WMA is provided by the Zilpo Scenic Byway (FR 918) north of FR 129, Buck Creek Road (FR 918A) that loops around to meet Zilpo Scenic Byway and Leatherwood Road (FR 129). Some gated side roads may be opened for seasonal hunts.

The WMA is surrounded by the Daniel Boone National Forest and Cave Run Lake. It is almost completely forested with scattered openings. Terrain is rough with some gently sloping areas on ridge tops and creek valleys. Hiking trails are available.

The U.S. Forest Service managed Zilpo Campground is adjacent to the WMA and provides access to Cave Run Lake. The Cumberland Ranger District Visitor Center is located north of the WMA near Cave Run Lake Dam on KY 801.

Hunting limited to longbow, crossbow and muzzle-loading firearms only. This is one of the few areas in the nation where crossbow hunting is permitted. For hunting information contact Ky. Dept. Fish and Wildlife Resources; additional information available from U.S. Forest Service, 1700 Bypass Road, Winchester, KY 40391. Owned by U.S. Forest Service.

For more online information about this public hunting area [click here](#).

Online Resources

Public Hunting Area users must abide by the Kentucky hunting, trapping, and fishing regulations. It is incumbent on persons using Public Hunting Areas to become familiar with these regulations. Kentucky Department of Fish & Wildlife Resources provides these regulations on our Web site at fw.ky.gov or by calling 1-800-858-1549. If you are viewing this as a PDF, clicking on the links below will direct your browser to our regulations and maps.

Guides and Publications

- Spring Turkey and Squirrel Guide
- Waterfowl Guide
- Fishing and Boating Guide
- Spring Turkey and Squirrel Guide
- Hunting Guide for Dove, Wood Duck, Teal, Woodcock, Snipe, and Crow
- Kentucky Hunting and Trapping Guide
- ADA Accessible Hunting Sites
- A Guide to Wildlife Management Areas in Kentucky

Maps and Geographic Information

- [Game Zone – Seasons Maps](#)
- [Wildlife Management Areas/Public Hunting Areas](#)
- [Other KDFWR Maps](#)
- [A Guide to Public Hunting Areas in Kentucky](#)
- [Google Maps – Statewide Public Hunting Area Locations](#)
- [Google Earth Files for Public Hunting Areas, boating and fishing access locations](#)
- [GPS Files for Public Hunting Areas, boating and fishing access locations](#)
- [Interactive Hunting and Fishing Areas Mapper](#)

Wildlife Management Area Map Notes & Legend

NOTE TO MAP USERS:

The landscape is depicted on most WMA maps using elevation contours, hillshading and a green tint indicating woodland areas. On WMAs that are leased from coal companies, our existing elevation contours, hillshading, and woodland data are no longer valid. On these WMAs the landscape is depicted using aerial photography from 2008.

WMA Map Legend

	WMA Office		WMA Boundary		Populated Place	
	Information Kiosk		Coal-Lease WMA (aerial photo)		Kentucky Boundary	
	Check station		Other Public Hunting Areas		Interstate Highway	
	Mobility-impaired Hunting Blind		Elk Hunting Units		Kentucky Parkway	
	Trailhead		Area Off Limits		U.S. Highway	
	Horseback Trailhead		No Hunting		State Highway	
	Parking Lot		Seasonally Restricted Access *		Local Road	
	Picnic Area		Mobility Impaired Hunting Area		Forest Service Road	
	Restrooms		Primitive Hunting Only		Active Railroad	
	Wildlife Viewing Site		Foot Traffic Only		Abandoned Railroad	
	Interpretive Site		Open Water		Federal Recreation Trail	
	Retriever Training Site		Wetland		State Park Trail	
	Gate		Woodland		WMA Road	
	Campground	* A list of guides is provided on the accompanying WMA Information page.				WMA Foot Trail
	Cemetery					WMA Horse Trail
	Corps of Engineers Office		Gas Pipeline			
	Waterfowl Blind		Powerline			
	Shooting Range		Rivers and Streams			
	Established Bank Access		Dam			
	Fishing Pier		Trout Waters			
	Carrydown Launch		Elevation Contour			
	Small Boat Ramp					
	Large Boat Ramp					
	State Park Office					