



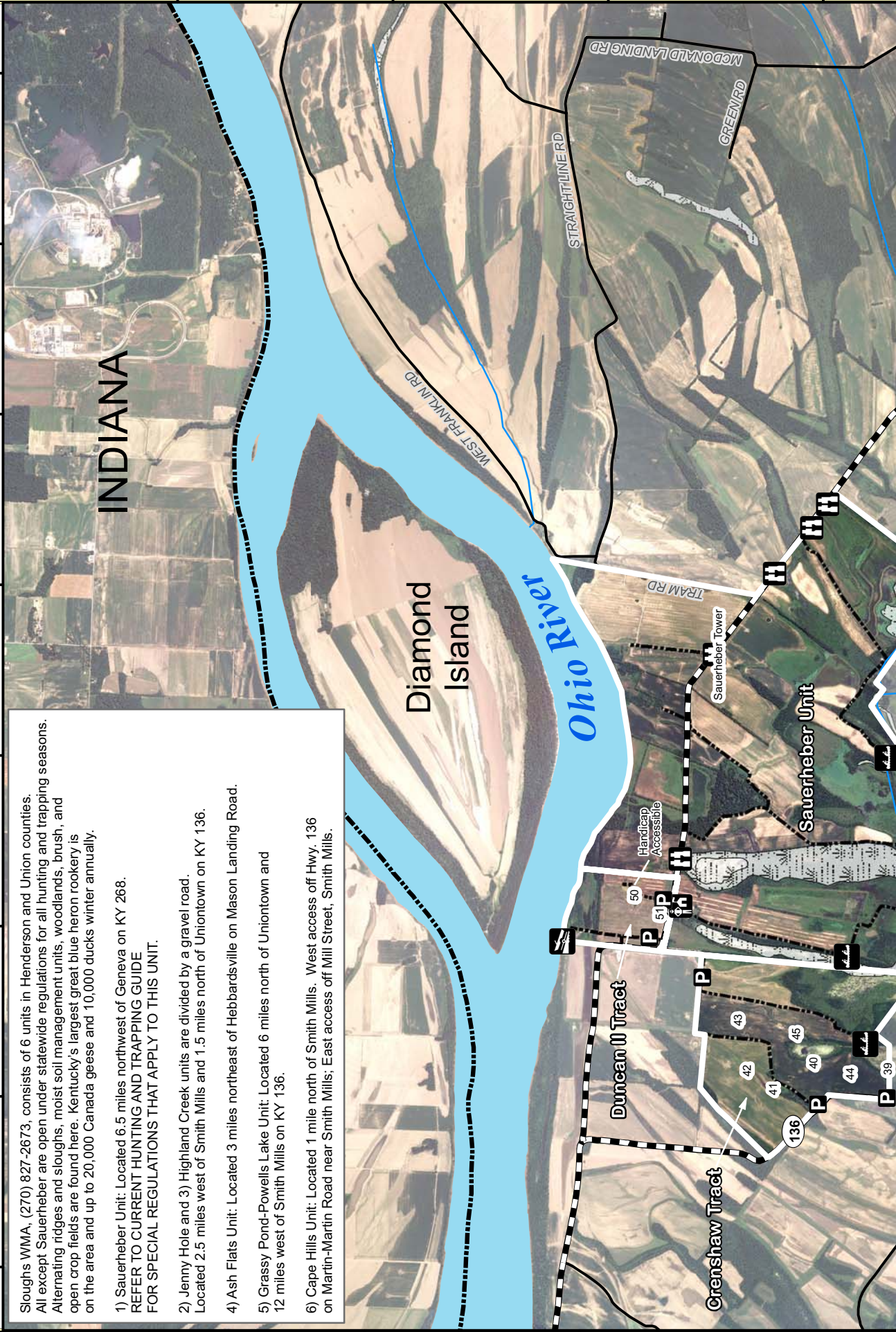
Acres 10,994
 Max Elev ft 487
 Min Elev ft 338

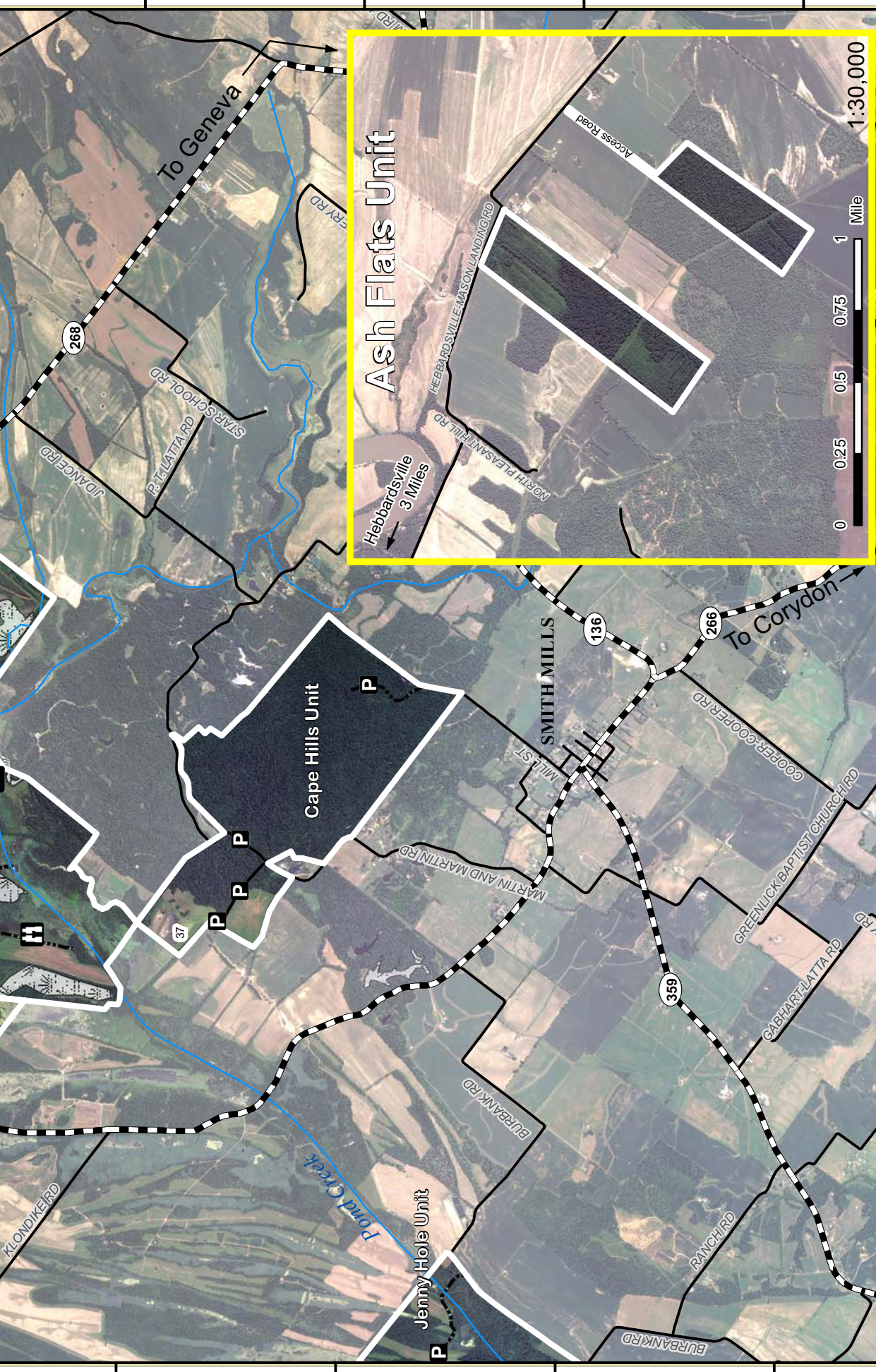
Sloughs WMA

Eastern Tracts

Sloughs WMA, (270) 827-2673, consists of 6 units in Henderson and Union counties. All except Sauerheber are open under statewide regulations for all hunting and trapping seasons. Alternating ridges and sloughs, moist soil management units, woodlands, brush, and open crop fields are found here. Kentucky's largest great blue heron rookery is on the area and up to 20,000 Canada geese and 10,000 ducks winter annually.

- 1) Sauerheber Unit: Located 6.5 miles northwest of Geneva on KY 268. REFER TO CURRENT HUNTING AND TRAPPING GUIDE FOR SPECIAL REGULATIONS THAT APPLY TO THIS UNIT.
- 2) Jenny Hole and 3) Highland Creek units are divided by a gravel road. Located 2.5 miles west of Smith Mills and 1.5 miles north of Uniontown on KY 136.
- 4) Ash Flats Unit: Located 3 miles northeast of Hebbardsville on Mason Landing Road.
- 5) Grassy Pond-Powells Lake Unit: Located 6 miles north of Uniontown and 12 miles west of Smith Mills on KY 136.
- 6) Cape Hills Unit: Located 1 mile north of Smith Mills. West access off Hwy. 136 on Martin-Martin Road near Smith Mills; East access off Mill Street, Smith Mills.





37°59'N
37°49'N
37°48'N
37°47'N

87°49'W
87°48'W
87°47'W
87°46'W
87°45'W
87°44'W
87°43'W
87°42'W

See Adjoining Sloughs V

Scale: 1:30,000

Scale: 1:45,000

Publication Date: 9/26/2011

Kentucky
UNBROKEN SPIRIT

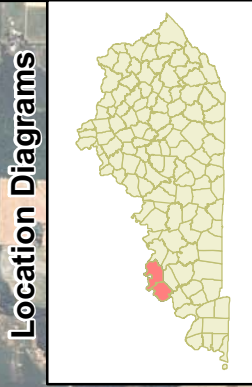
Disclaimer: "Limitation of Liability: KY Dept. of Fish & Wildlife Resources does not warrant the accuracy or completeness of the information in this work and makes NO REPRESENTATIONS REGARDING THE FITNESS FOR USE OF THE INFORMATION OR DATA FURNISHED HEREIN." Copyright.



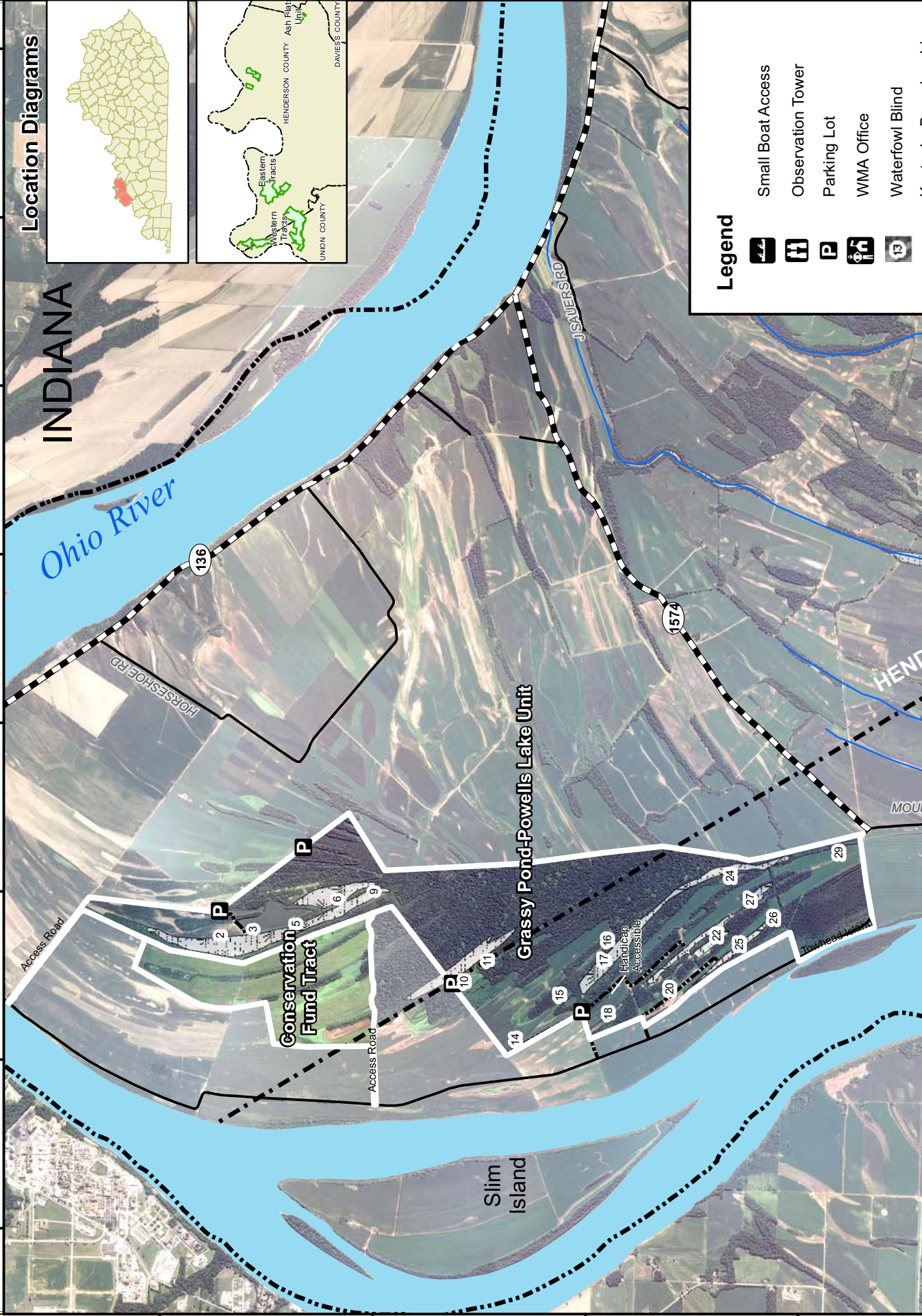
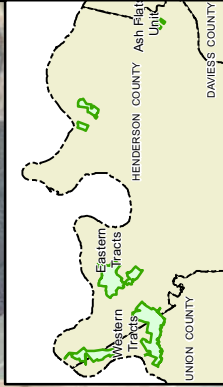
Sloughs WMA

Western Tracts

Acres 10,994
Max Elev ft 487
Min Elev ft 338



Location Diagrams



Legend

- Small Boat Access
- Observation Tower
- Parking Lot
- WMA Office
- Waterfowl Blind

37°54'N

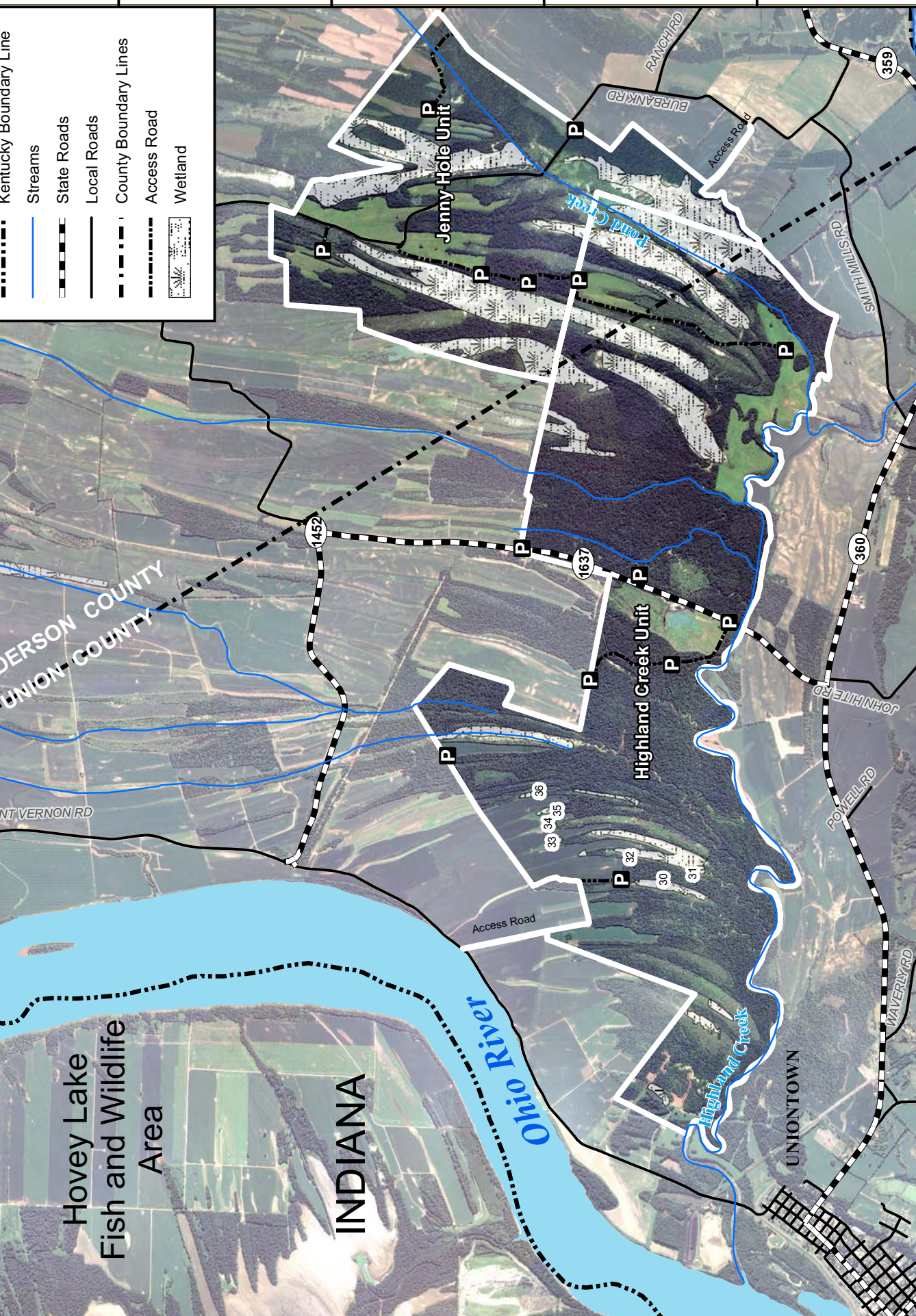
37°53'N

37°52'N

37°51'N

Legend

- Kentucky Boundary Line
- Streams
- State Roads
- Local Roads
- County Boundary Lines
- Access Road
- Wetland



**Hovey Lake
Fish and Wildlife
Area**

INDIANA

Ohio River

Jenny-Hofe Unit

Highland Creek Unit

UNIONTOWN



Publication Date:
9/28/2011

Mile



1:45,000

Limitation of Liability: KY Dept. of Fish & Wildlife Resources does not know of any inaccuracies or defects in the information in this work and make NO REPRESENTATIONS REGARDING THE FITNESS FOR USE OF THE INFORMATION OR DATA FURNISHED HEREIN. Copyright.



37°50'N 37°49'N 37°48'N 37°47'N 87°56'W 87°55'W 87°54'W 87°53'W 87°52'W 87°51'W 87°50'W 87°49'W