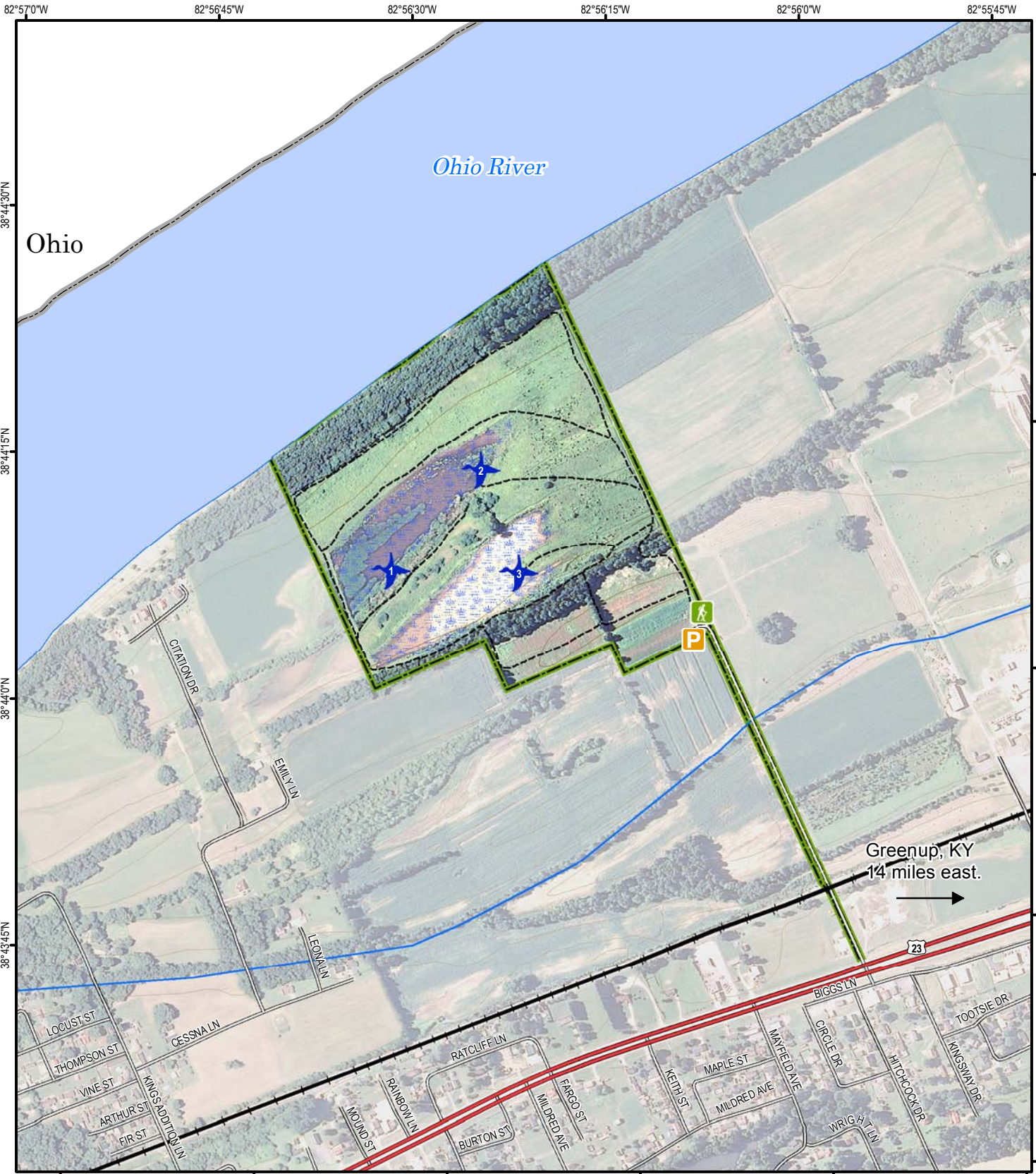
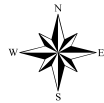


South Shore Wildlife Management Area



A map legend and additional information are provided on PDF pages that accompany this map.

Publication Date: 06/16/2011



Note to Map Users

Map prepared by Kentucky Department of Fish & Wildlife Resources (KDFWR). Although KDFWR strives for accuracy, data used to create this map are from a variety of sources and dates; as such, KDFWR makes no representations regarding the accuracy or fitness for use of the information furnished herein.

South Shore WMA Information

Public Hunting Area Location



Regional Locator



WMA Overview

Location & Size: Greenup County, 98 acres

Contact (606) 474-8535.

Elevation minimum 480 feet, maximum 550 feet.

Area Habitat mostly open land: open land 61%, forest 18%, wetland 21%, open water 0%.

Directions & Description: Located north of US 23, on the eastern edge of the City of South Shore. Consists entirely of Ohio River bottomland. Twenty-two acres of seasonal wetland with the remainder being grassland and brushy tree rows. Open only to quota waterfowl hunting Nov. 15 - Jan. 15, annually. Open to hunting according to statewide regulations during other times of the year with the exceptions that: (1) Center fire rifles or handguns may not be used for hunting at any time, and (2) Steel or other non-toxic shot is required for all dove hunting. Good opportunities for bird-watching and wildlife photography outside of the quota hunt period.

Two shallow wetlands on South Shore WMA attract a wide variety of waterfowl fall through spring. For a complete list of all bird and other species on the WMA, go to [Species List](#).

Three waterfowl blinds are available for wildlife viewing and photography beginning Feb. 1. Blinds will continue to be available for hunting only from autumn through the end of January. Blinds remain open until the wetlands dry out, usually from late May to late June. Access to the blinds from the parking area near the WMA entrance by foot travel only. Blinds are a one-quarter to a one-half mile walk from the parking area. Depending on the water levels, appropriate clothing such as rubber boots or chest-high waders are recommended. Each blind can accommodate most camera equipment and up to four people, benches are provided for seating. Owned by the Kentucky Department of Fish and Wildlife Resources

For more online information about this public hunting area [click here](#).

Online Resources

Public Hunting Area users must abide by the Kentucky hunting, trapping, and fishing regulations. It is incumbent on persons using Public Hunting Areas to become familiar with these regulations. Kentucky Department of Fish & Wildlife Resources provides these regulations on our Web site at fw.ky.gov or by calling 1-800-858-1549. If you are viewing this as a PDF, clicking on the links below will direct your browser to our regulations and maps.

Guides and Publications

- Spring Turkey and Squirrel Guide
- Waterfowl Guide
- Fishing and Boating Guide
- Spring Turkey and Squirrel Guide
- Hunting Guide for Dove, Wood Duck, Teal, Woodcock, Snipe, and Crow
- Kentucky Hunting and Trapping Guide
- ADA Accessible Hunting Sites
- A Guide to Wildlife Management Areas in Kentucky

Maps and Geographic Information

- [Game Zone – Seasons Maps](#)
- [Wildlife Management Areas/Public Hunting Areas](#)
- [Other KDFWR Maps](#)
- [A Guide to Public Hunting Areas in Kentucky](#)
- [Google Maps – Statewide Public Hunting Area Locations](#)
- [Google Earth Files for Public Hunting Areas, boating and fishing access locations](#)
- [GPS Files for Public Hunting Areas, boating and fishing access locations](#)
- [Interactive Hunting and Fishing Areas Mapper](#)

Wildlife Management Area Map Notes & Legend

NOTE TO MAP USERS:

For most WMA maps the landscape is depicted using a combination of elevation contours, hillshading and a green tint indicating woodland areas that is derived from satellite imagery. On WMAs that are relatively small or have a history of surface mining aerial photography is used.

WMA Map Legend

	WMA Office		WMA Boundary		Populated Place
	Information Kiosk		Aerial photograph		Kentucky Boundary
	Check station		Other Public Hunting Areas		Interstate Highway
	Mobility-impaired Hunting Blind		Elk Hunting Units		Kentucky Parkway
	Trailhead		Area Off Limits		U.S. Highway
	Horseback Trailhead		No Hunting		State Highway
	Parking Lot		Seasonally Restricted Access *		Local Road
	Picnic Area		Mobility Impaired Hunting Area		Forest Service Road
	Restrooms		Primitive Hunting Only		Active Railroad
	Wildlife Viewing Site		Foot Traffic Only		Abandoned Railroad
	Interpretive Site		Open Water		Federal Recreation Trail
	Retriever Training Site		Wetland		State Park Trail
	Gate		Woodland		WMA Road
	Campground				WMA Foot Trail
	Cemetery				WMA Horse Trail
	Corps of Engineers Office				Gas Pipeline
	Waterfowl Blind				Powerline
	Shooting Range				Rivers and Streams
	Established Bank Access				Dam
	Fishing Pier				Trout Waters
	Carrydown Launch				Elevation Contour
	Small Boat Ramp				
	Large Boat Ramp				
	State Park Office				