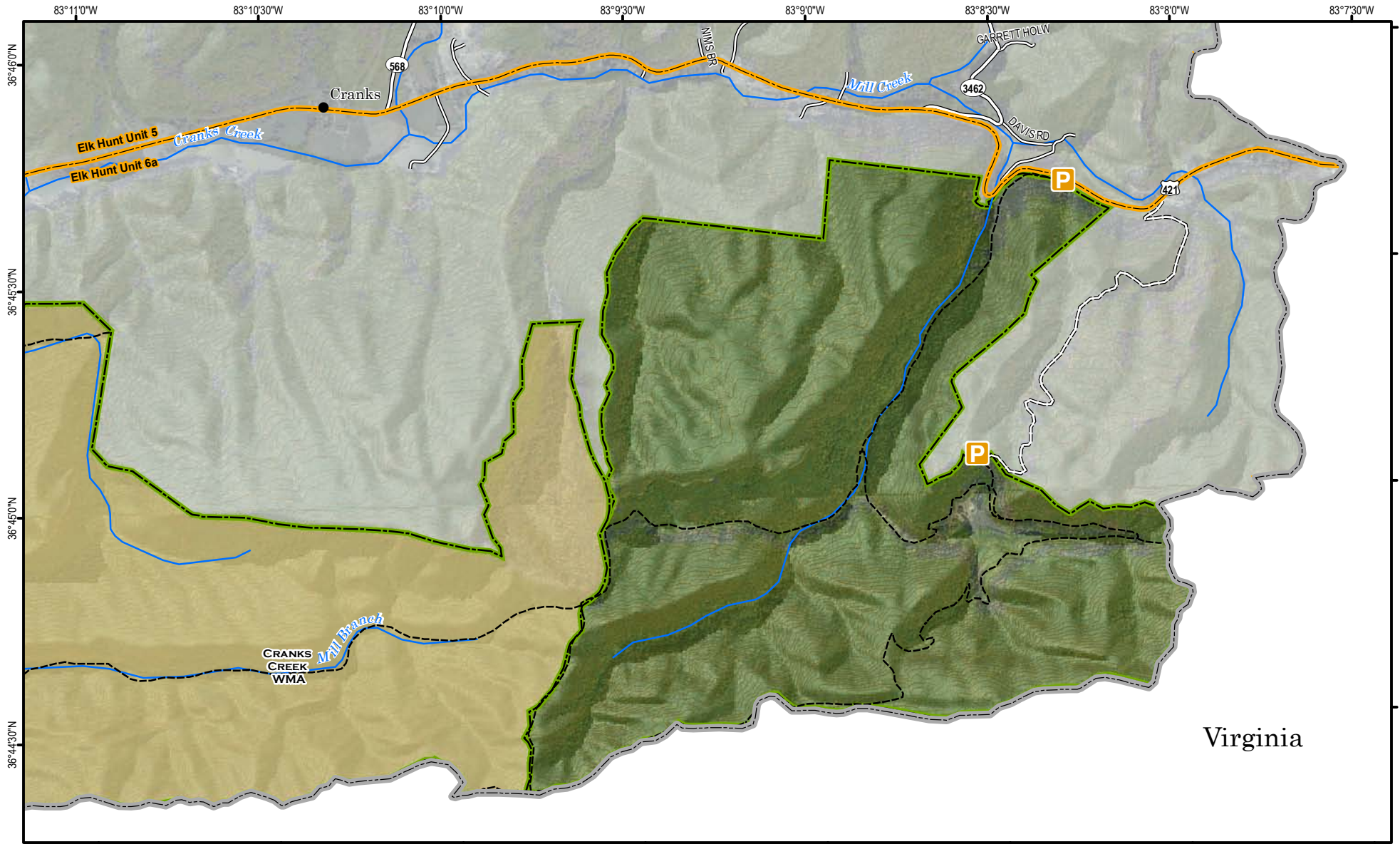




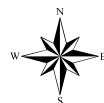
Stone Mountain Wildlife Management Area & State Natural Area



Virginia

A map legend and additional information are provided on PDF pages that accompany this map.

Publication Date: 02/08/2011



0 0.25 0.5 0.75 1 Mile

Scale 1:22,000

Contour interval: 20 feet



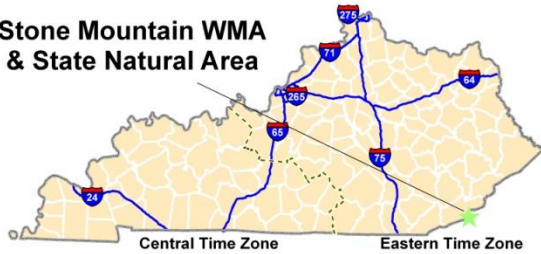
Note to Map Users

Map prepared by Kentucky Department of Fish & Wildlife Resources (KDFWR). Although KDFWR strives for accuracy, data used to create this map are from a variety of sources and dates; as such, KDFWR makes no representations regarding the accuracy or fitness for use of the information furnished herein.

Stone Mountain WMA & State Natural Area Information

Public Hunting Area Location

Stone Mountain WMA & State Natural Area



Regional Locator



WMA Overview

Location & Size: Harlan County, 1,017 acres

Contact (606) 337-9317

Elevation minimum 1683 feet, maximum 2933 feet.

Area Habitat mostly forest: open land 6%, forest 94%, wetland 0%, open water 0%.

Directions & Description: From Harlan travel approximately 13 miles southeast on Hwy 421 to the property on the right. There are 2 access points. The first access is directly off Hwy 421; approximately halfway up the mountain there is a sharp curve, just past this curve is a parking area on the right. Access to the parking area should be made when coming down the hill or exiting the parking area should only be made up the hill due to a blind spot on Hwy 421 and the angle of the drive. The second access is a dirt road at the top of the hill that turns to the right. Follow this road 1.2 miles to the property; a minimum of a 2-wheel drive truck is recommended for ground clearance.

Steep, mountainous terrain, is entirely forested with the exception of a dry man-made lakebed. Good to moderate populations of squirrel, rabbits, deer, turkey and songbirds exist on the area.

The area is open under statewide regulations for small game, turkey, and deer seasons. Purchased with Kentucky Heritage Land Conservation funds and is jointly owned and managed by the Kentucky Department of Fish & Wildlife Resources and the Kentucky State Nature Preserves Commission.

For more online information about this public hunting area [click here](#).

Online Resources

Public Hunting Area users must abide by the Kentucky hunting, trapping, and fishing regulations. It is incumbent on persons using Public Hunting Areas to become familiar with these regulations. Kentucky Department of Fish & Wildlife Resources provides these regulations on our Web site at fw.ky.gov or by calling 1-800-858-1549. If you are viewing this as a PDF, clicking on the links below will direct your browser to our regulations and maps.

Guides and Publications

- Spring Turkey and Squirrel Guide
- Waterfowl Guide
- Fishing and Boating Guide
- Spring Turkey and Squirrel Guide
- Hunting Guide for Dove, Wood Duck, Teal, Woodcock, Snipe, and Crow
- Kentucky Hunting and Trapping Guide
- ADA Accessible Hunting Sites
- A Guide to Wildlife Management Areas in Kentucky

Maps and Geographic Information




- [Game Zone – Seasons Maps](#)
- [Wildlife Management Areas/Public Hunting Areas](#)
- [Other KDFWR Maps](#)
- [A Guide to Public Hunting Areas in Kentucky](#)
- [Google Maps – Statewide Public Hunting Area Locations](#)
- [Google Earth Files for Public Hunting Areas, boating and fishing access locations](#)
- [GPS Files for Public Hunting Areas, boating and fishing access locations](#)
- [Interactive Hunting and Fishing Areas Mapper](#)

Wildlife Management Area Map Notes & Legend

NOTE TO MAP USERS:

For most WMA maps the landscape is depicted using a combination of elevation contours, hillshading and a green tint indicating woodland areas that is derived from satellite imagery. On WMAs that are relatively small or have a history of surface mining aerial photography is used.

WMA Map Legend

	WMA Office		WMA Boundary		Populated Place
	Information Kiosk		Aerial photograph		Kentucky Boundary
	Check station		Other Public Hunting Areas		Interstate Highway
	Mobility-impaired Hunting Blind		Elk Hunting Units		Kentucky Parkway
	Trailhead		Area Off Limits		U.S. Highway
	Horseback Trailhead		No Hunting		State Highway
	Parking Lot		Seasonally Restricted Access *		Local Road
	Picnic Area		Mobility Impaired Hunting Area		Forest Service Road
	Restrooms		Primitive Hunting Only		Active Railroad
	Wildlife Viewing Site		Foot Traffic Only		Abandoned Railroad
	Interpretive Site		Open Water		Federal Recreation Trail
	Retriever Training Site		Wetland		State Park Trail
	Gate		Woodland		WMA Road
	Campground				WMA Foot Trail
	Cemetery				WMA Horse Trail
	Corps of Engineers Office				Gas Pipeline
	Waterfowl Blind				Powerline
	Shooting Range				Rivers and Streams
	Established Bank Access				Dam
	Fishing Pier				Trout Waters
	Carrydown Launch				Elevation Contour
	Small Boat Ramp				
	Large Boat Ramp				
	State Park Office				