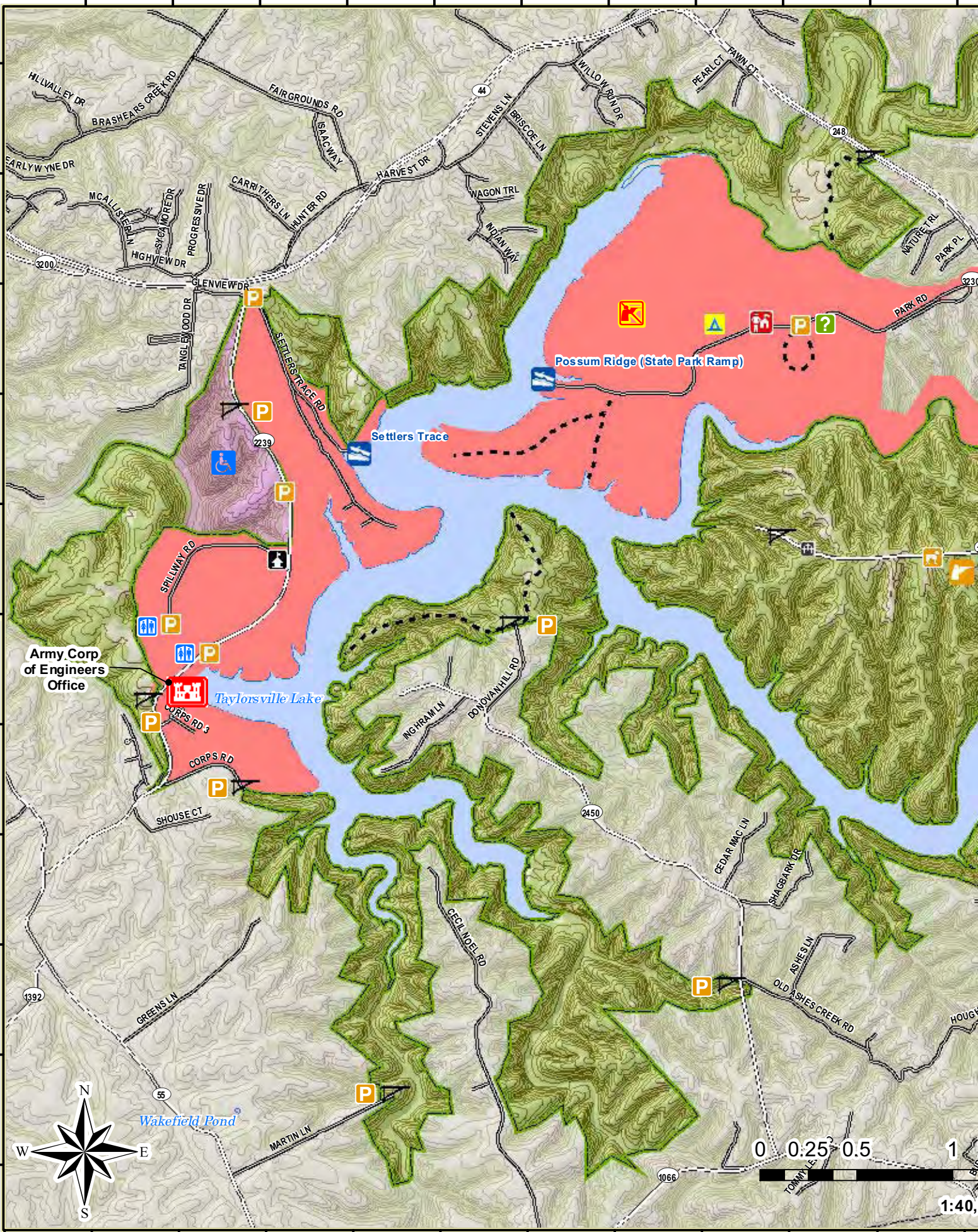


85°19'0"W 85°18'30"W 85°18'0"W 85°17'30"W 85°17'0"W 85°16'30"W 85°16'0"W 85°15'30"W 85°15'0"W 85°14'30"W 85°14'0"W

38°30'0"N  
38°23'0"N  
38°20'0"N  
38°13'0"N  
38°10'0"N  
38°03'0"N  
38°00'0"N  
37°59'30"N  
37°59'0"N  
37°58'30"N  
37°58'0"N



Army Corp of Engineers Office

Taylorville Lake

Possum Ridge (State Park Ramp)

Settlers Trace

Wakefield Pond

0 0.25 0.5 1

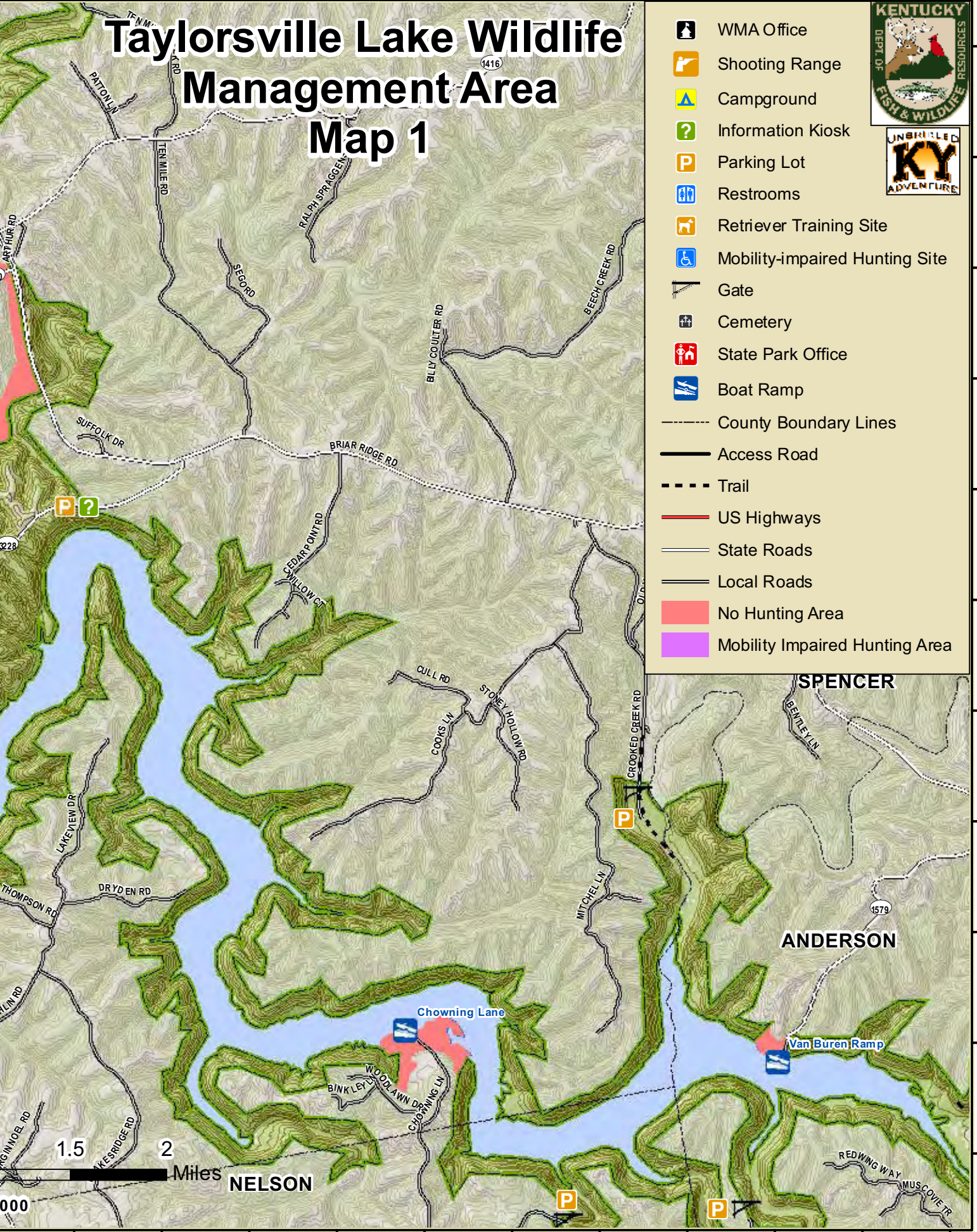
1.40

# Taylorsville Lake Wildlife Management Area

## Map 1

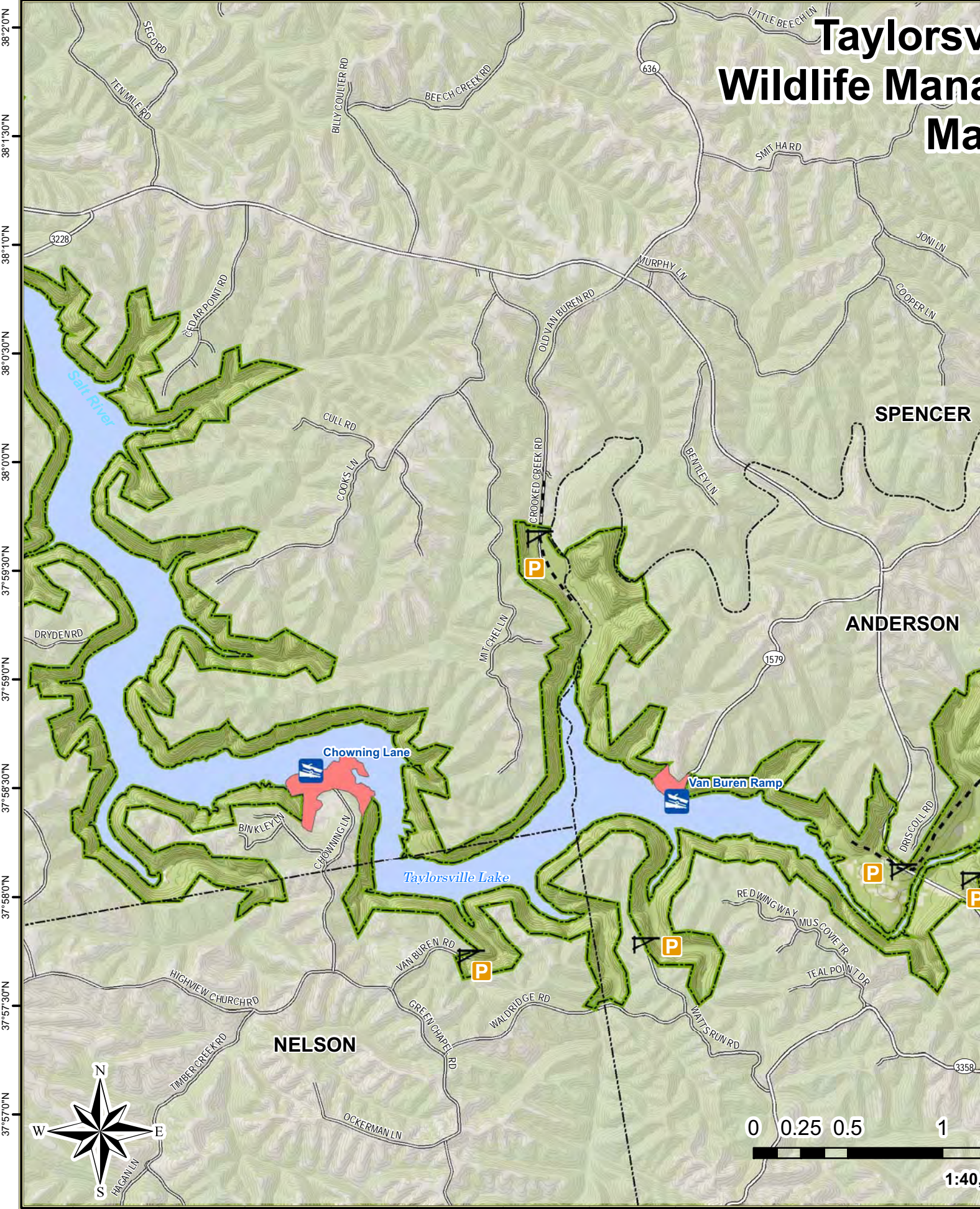


- WMA Office
- Shooting Range
- Campground
- Information Kiosk
- Parking Lot
- Restrooms
- Retriever Training Site
- Mobility-impaired Hunting Site
- Gate
- Cemetery
- State Park Office
- Boat Ramp
- County Boundary Lines
- Access Road
- Trail
- US Highways
- State Roads
- Local Roads
- No Hunting Area
- Mobility Impaired Hunting Area



85°13'0"W 85°12'30"W 85°12'0"W 85°11'30"W 85°11'0"W 85°10'30"W 85°10'0"W 85°9'30"W 85°9'0"W 85°8'30"W 85°8'0"W

# Taylorville Wildlife Management Area



SPENCER

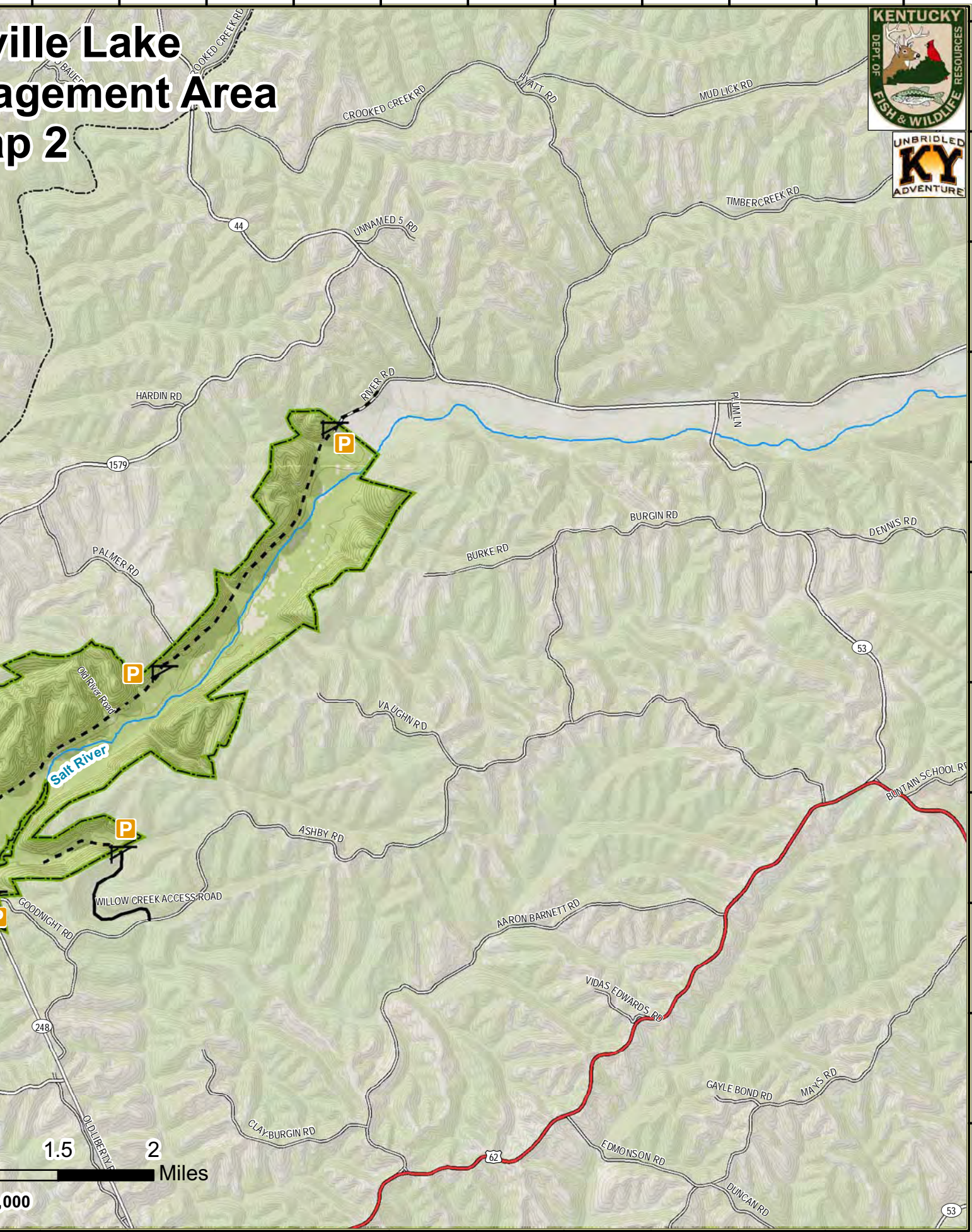
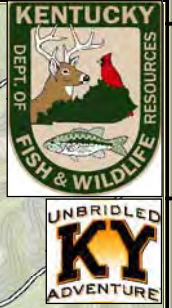
ANDERSON

NELSON

85°7'30"W 85°7'0"W 85°6'30"W 85°6'0"W 85°5'30"W 85°5'0"W 85°4'30"W 85°4'0"W 85°3'30"W 85°3'0"W 85°2'30"W

# Saltsville Lake Management Area

## Map 2



000

53

# Taylorsville Lake WMA Information

## Public Hunting Area Location



## Regional Locator



## WMA Overview

**Location & Size:** Spencer, Anderson & Nelson counties, 9,418 acres.

**Contact:** (502) 477-9024; COE office (502) 477-8882

**Elevation:** Minimum 479 feet, maximum 804 feet.

**Area Habitat:** Mostly forest: open land 4%, forest 91%, wetland 2%, open water 3%.

**Directions & Description:** Access off Highways. 44 and 248 E. of Taylorsville and by lake (6 boat ramps on lake). Hilly to gently sloping woodland terrain with open ridge tops. Flat Salt River bottoms, steep hillsides. Wildlife viewing area in nearby State Park. Mobility impaired access to permit holders in designated area. Waterfowl hunting hours are ½ hour before sunrise until 2 PM daily on the entire WMA (including on the lake) from November 1 through February. Shooting range on Briar Ridge Road (for single projectile firearms only; no shotshells allowed) open Monday-Saturday 9:00 AM-sunset & Sundays noon-sunset. Check online calendar (see <http://fw.ky.gov/app1/calendar.aspx> and select **Other**) for closures or events. Owned by U.S. Army Corps of Engineers.

For more online information about this public hunting area [click here](#).

## Online Resources

Public Hunting Area users must abide by the Kentucky hunting, trapping, and fishing regulations. It is incumbent on persons using Public Hunting Areas to become familiar with these regulations. Kentucky Department of Fish & Wildlife Resources provides these regulations on our Web site at [fw.ky.gov](http://fw.ky.gov) or by calling 1-800-858-1549. If you are viewing this as a PDF, clicking on the links below will direct your browser to our regulations and maps.

## Guides and Publications

- Spring Turkey and Squirrel Guide
- Waterfowl Guide
- Fishing and Boating Guide
- Spring Turkey and Squirrel Guide
- Hunting Guide for Dove, Wood Duck, Teal, Woodcock, Snipe, and Crow
- Kentucky Hunting and Trapping Guide
- ADA Accessible Hunting Sites
- A Guide to Wildlife Management Areas in Kentucky

## Maps and Geographic Information




- [Game Zone – Seasons Maps](#)
- [Wildlife Management Areas/Public Hunting Areas](#)
- [Other KDFWR Maps](#)
- [A Guide to Public Hunting Areas in Kentucky](#)
- [Google Maps – Statewide Public Hunting Area Locations](#)
- [Google Earth Files for Public Hunting Areas, boating and fishing access locations](#)
- [GPS Files for Public Hunting Areas, boating and fishing access locations](#)
- [Interactive Hunting and Fishing Areas Mapper](#)

# Wildlife Management Area Map Notes & Legend

## NOTE TO MAP USERS:

For most WMA maps the landscape is depicted using a combination of elevation contours, hillshading and a green tint indicating woodland areas that is derived from satellite imagery. On WMAs that are relatively small or have a history of surface mining aerial photography is used.

## WMA Map Legend

	WMA Office		WMA Boundary		Populated Place
	Information Kiosk		Aerial photograph		Kentucky Boundary
	Check station		Other Public Hunting Areas		Interstate Highway
	Mobility-impaired Hunting Blind		Elk Hunting Units		Kentucky Parkway
	Trailhead		Area Off Limits		U.S. Highway
	Horseback Trailhead		No Hunting		State Highway
	Parking Lot		Seasonally Restricted Access *		Local Road
	Picnic Area		Mobility Impaired Hunting Area		Forest Service Road
	Restrooms		Primitive Hunting Only		Active Railroad
	Wildlife Viewing Site		Foot Traffic Only		Abandoned Railroad
	Interpretive Site		Open Water		Federal Recreation Trail
	Retriever Training Site		Wetland		State Park Trail
	Gate		Woodland		WMA Road
	Campground				WMA Foot Trail
	Cemetery				WMA Horse Trail
	Corps of Engineers Office				Gas Pipeline
	Waterfowl Blind				Powerline
	Shooting Range				Rivers and Streams
	Established Bank Access				Dam
	Fishing Pier				Trout Waters
	Carrydown Launch				Elevation Contour
	Small Boat Ramp				
	Large Boat Ramp				
	State Park Office				