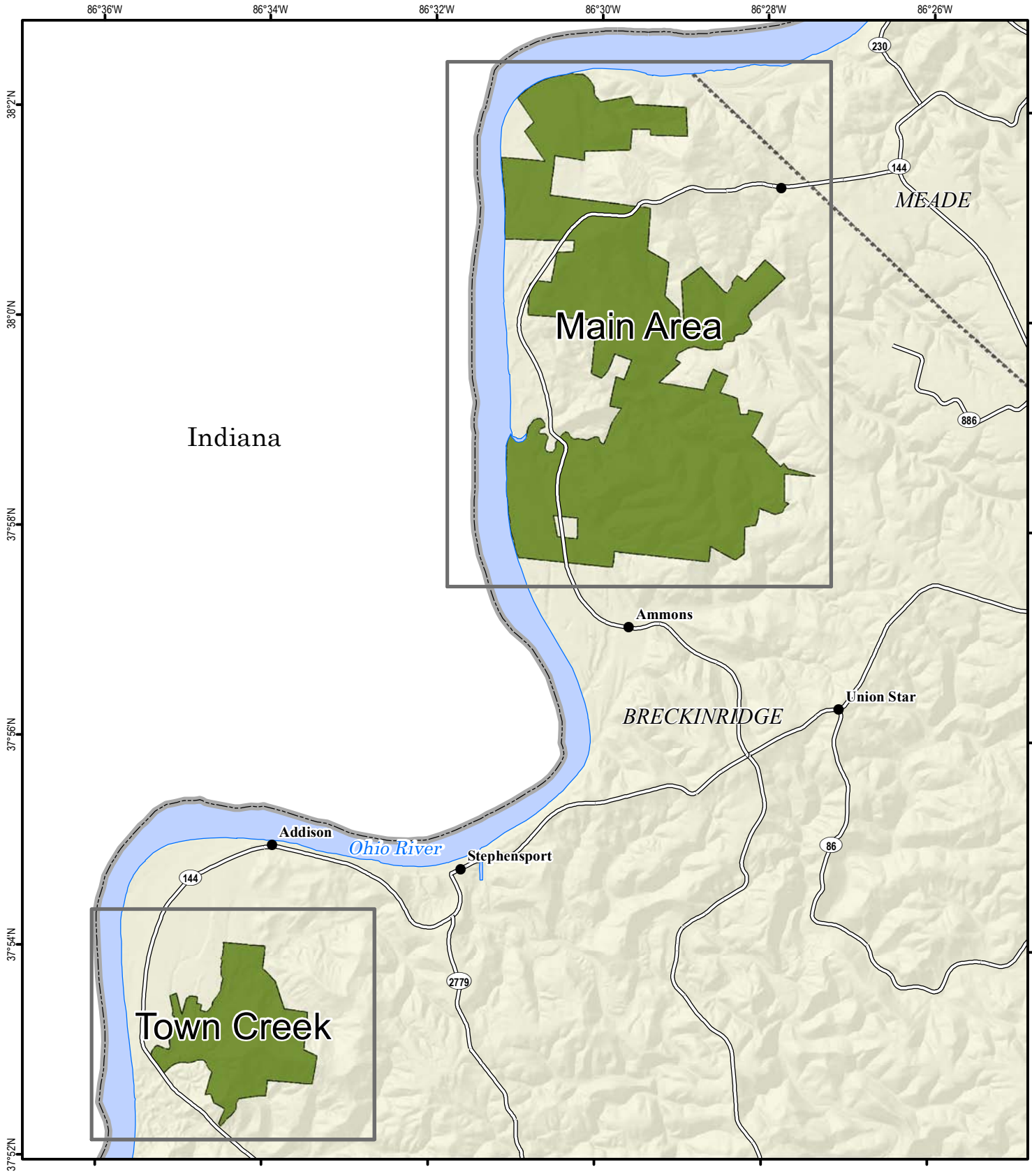
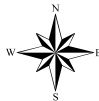


Yellowbank Wildlife Management Area Index Map



A map legend and additional information are provided on PDF pages that accompany this map.

Publication Date: 10/31/2011



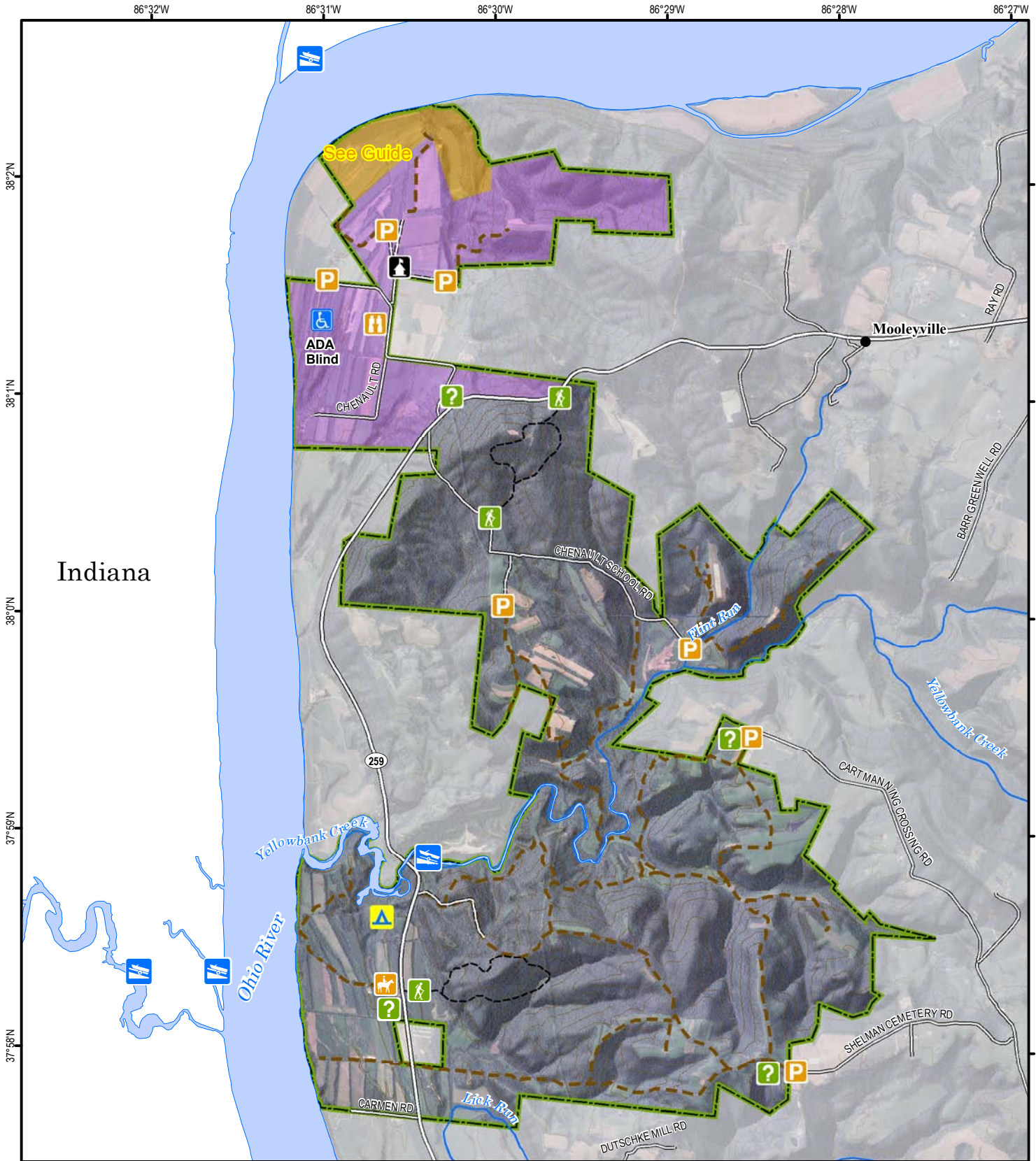
0 1 2 3 Mile

Scale 1:93,000



Note to Map Users

Map prepared by Kentucky Department of Fish & Wildlife Resources (KDFWR). Although KDFWR strives for accuracy, data used to create this map are from a variety of sources and dates; as such, KDFWR makes no representations regarding the accuracy or fitness for use of the information furnished herein.

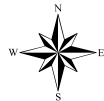


Indiana

See adjoining Town Creek map

A map legend and additional information are provided on PDF pages that accompany this map.

Publication Date: 10/31/2011



0 0.25 0.5 0.75 1 Mile

Scale 1:45,000

Contour interval: 60 feet

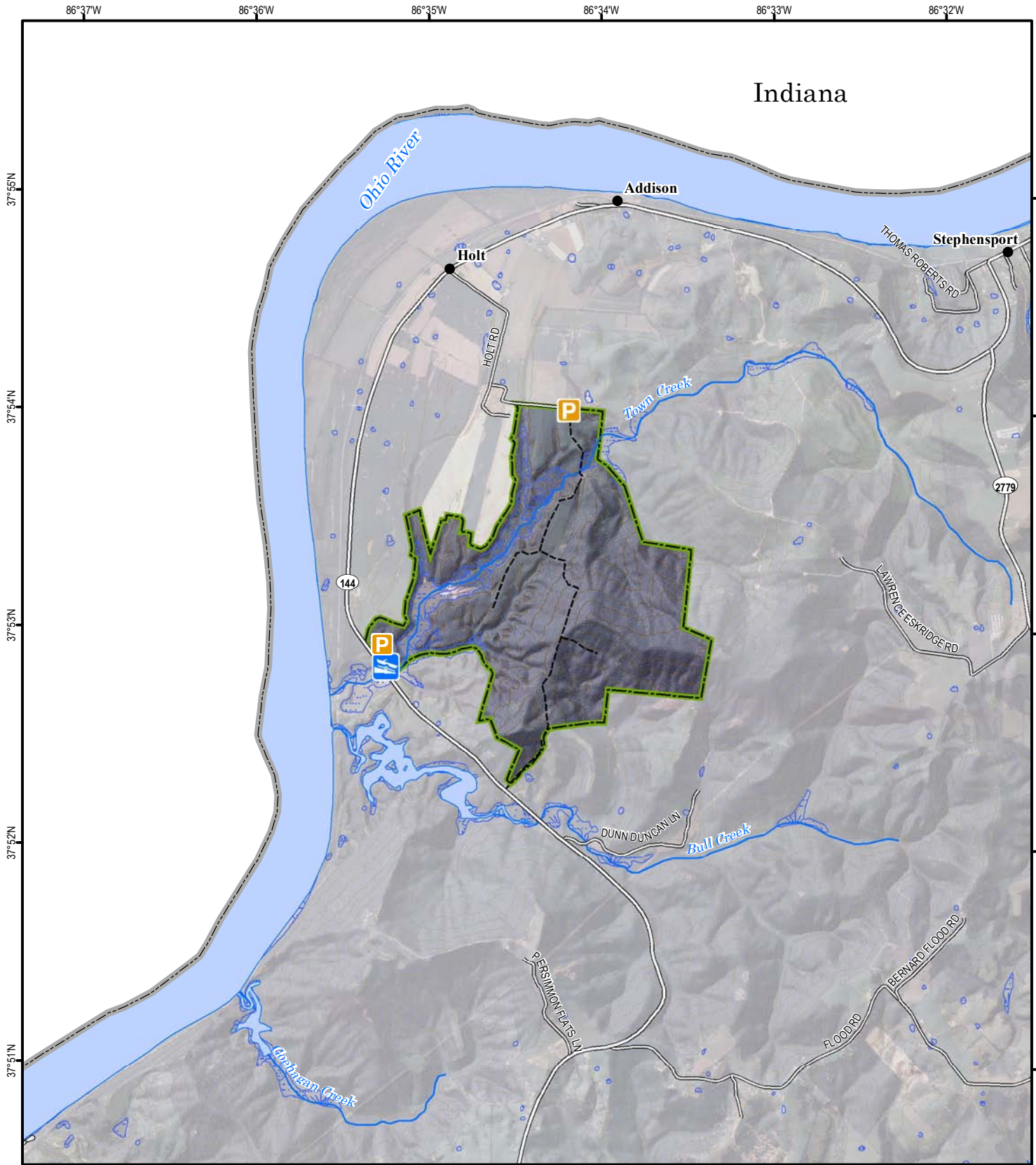


Note to Map Users

Map prepared by Kentucky Department of Fish & Wildlife Resources (KDFWR). Although KDFWR strives for accuracy, data used to create this map are from a variety of sources and dates; as such, KDFWR makes no representations regarding the accuracy or fitness for use of the information furnished herein.

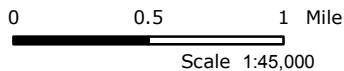
See adjoining
Main map

Yellowbank Wildlife Management Area Town Creek



A map legend and additional information are provided on PDF pages that accompany this map.

Publication Date: 10/31/2011



Contour interval: 60 feet



Note to Map Users

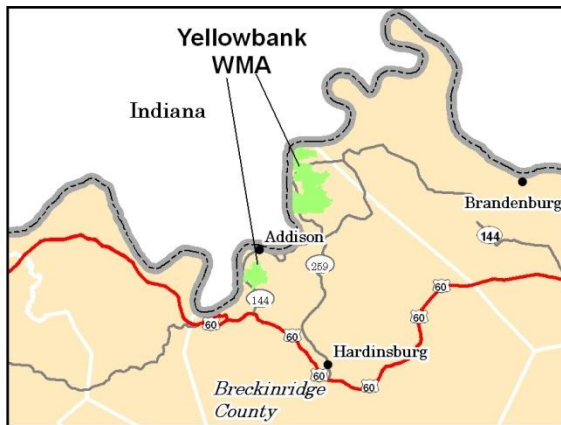
Map prepared by Kentucky Department of Fish & Wildlife Resources (KDFWR). Although KDFWR strives for accuracy, data used to create this map are from a variety of sources and dates; as such, KDFWR makes no representations regarding the accuracy or fitness for use of the information furnished herein.

Yellowbank WMA Information

Public Hunting Area Location



Regional Locator



WMA Overview

Location & Size: Breckinridge County, 6,775 acres

Contact (270) 547-6856

Elevation minimum 349 feet, maximum 852 feet.

Area Habitat mostly forest: open land 11%, forest 85%, wetland 3%, open water 1%.

Directions & Description: Consists of 2 separate tracts, the Main Area and Town Creek Tract both in Breckinridge County.

Main Area: Near Ohio River and Meade County line; 20 miles north of Hardinsburg on KY 259;

20 miles west of Brandenburg off KY 144 to KY 259. Quality Deer Management Special Regulations apply. Horseback riding allowed only on roads and trails (25 miles) indicated by signs. No off-road/field/woods horse use. Horseback parking area located next to information station. Hiking trails (.6 miles, 2.5 miles loops) across from information station on Hwy 259 and a 1.2-mile loop trail accessed from center of WMA. Self-guided demonstration area features habitat types, prairie grasses, wetlands. A 20-stop archery trail (¾ mile loop) located at the end of campground is open to public. No broad head use allowed while target shooting, field tips only; all targets are off to the right of the trail for safe walking. Fishing in area ponds and on Yellowbank Creek, ramp at creek, providing access to Ohio River. Areas within Tract 1 closed Oct. 15-March 15. Waterfowl refuge marked by signs. Primitive camping on designated site only - primitive rest rooms in camp ground. Tract 1 (north of KY 259) is a designated Mobility Impaired Area.

Town Creek Tract, Near Addison and Ohio River; 14 miles NW of Hardinsburg on KY 60 to KY 144; 2 miles W of Addison on KY 144 to Holt Road; Access/ Parking area on KY 144 near Town Creek Bridge and Holt Road. Foot Travel Only. Fishing and Hunting allowed in Town Creek Embayment except for Private Property surrounding the eastern portion of the bay. Visitors must observe posted signs at access/ parking areas. Owned by Kentucky Department of Fish and Wildlife Resources, portions purchased with funds from the Heritage Lands Conservation Fund Board.

For more online information about this public hunting area [click here](#).

Online Resources

Public Hunting Area users must abide by the Kentucky hunting, trapping, and fishing regulations. It is incumbent on persons using Public Hunting Areas to become familiar with these regulations. Kentucky Department of Fish & Wildlife Resources provides these regulations on our Web site at fw.ky.gov or by calling 1-800-858-1549. If you are viewing this as a PDF, clicking on the links below will direct your browser to our regulations and maps.

Guides and Publications

- Spring Turkey and Squirrel Guide
- Waterfowl Guide
- Fishing and Boating Guide
- Spring Turkey and Squirrel Guide
- Hunting Guide for Dove, Wood Duck, Teal, Woodcock, Snipe, and Crow
- Kentucky Hunting and Trapping Guide
- ADA Accessible Hunting Sites
- A Guide to Wildlife Management Areas in Kentucky

Maps and Geographic Information

- [Game Zone – Seasons Maps](#)
- [Wildlife Management Areas/Public Hunting Areas](#)
- [Other KDFWR Maps](#)
- [A Guide to Public Hunting Areas in Kentucky](#)
- [Google Maps – Statewide Public Hunting Area Locations](#)
- [Google Earth Files for Public Hunting Areas, boating and fishing access locations](#)
- [GPS Files for Public Hunting Areas, boating and fishing access locations](#)
- [Interactive Hunting and Fishing Areas Mapper](#)

Wildlife Management Area Map Notes & Legend

NOTE TO MAP USERS:

For most WMA maps the landscape is depicted using a combination of elevation contours, hillshading and a green tint indicating woodland areas that is derived from satellite imagery. On WMAs that are relatively small or have a history of surface mining aerial photography is used.

WMA Map Legend

	WMA Office		WMA Boundary		Populated Place
	Information Kiosk		Aerial photograph		Kentucky Boundary
	Check station		Other Public Hunting Areas		Interstate Highway
	Mobility-impaired Hunting Blind		Elk Hunting Units		Kentucky Parkway
	Trailhead		Area Off Limits		U.S. Highway
	Horseback Trailhead		No Hunting		State Highway
	Parking Lot		Seasonally Restricted Access *		Local Road
	Picnic Area		Mobility Impaired Hunting Area		Forest Service Road
	Restrooms		Primitive Hunting Only		Active Railroad
	Wildlife Viewing Site		Foot Traffic Only		Abandoned Railroad
	Interpretive Site		Open Water		Federal Recreation Trail
	Retriever Training Site		Wetland		State Park Trail
	Gate		Woodland		WMA Road
	Campground				WMA Foot Trail
	Cemetery				WMA Horse Trail
	Corps of Engineers Office				Gas Pipeline
	Waterfowl Blind				Powerline
	Shooting Range				Rivers and Streams
	Established Bank Access				Dam
	Fishing Pier				Trout Waters
	Carrydown Launch				Elevation Contour
	Small Boat Ramp				
	Large Boat Ramp				
	State Park Office				