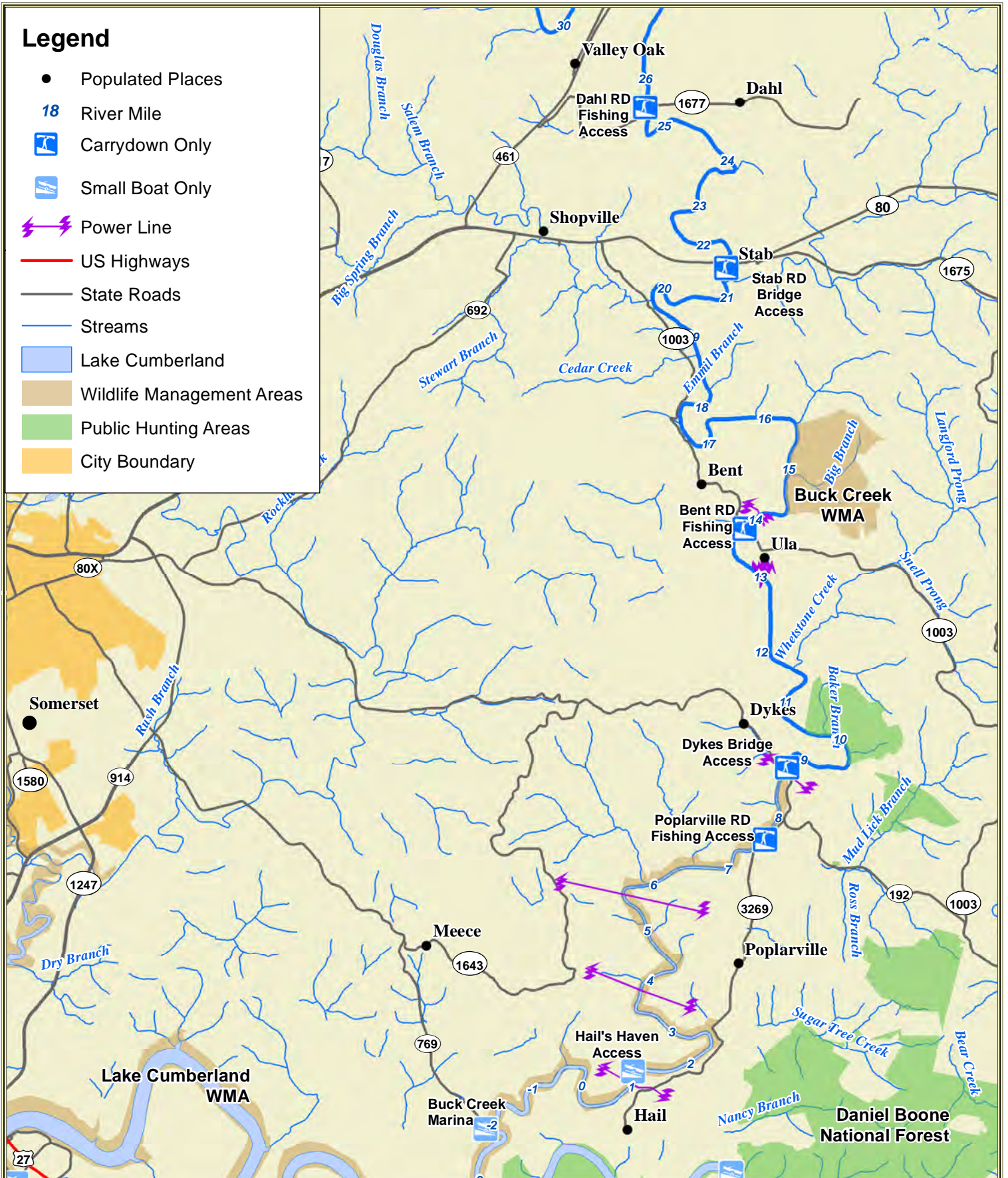


Legend

- Populated Places
- 18 River Mile
- Carrydown Only
- Small Boat Only
- Power Line
- US Highways
- State Roads
- Streams
- Lake Cumberland
- Wildlife Management Areas
- Public Hunting Areas
- City Boundary



Ramp to Ramp Distances
 Dahl RD Access to Stab RD Access = 4m
 Stab RD Access to Bent RD Access = 7.5m
 Bent RD Access to Dykes Bridge = 5m
 Dykes Bridge to Poplarville RD Access = 1m
 Poplarville RD Access to Hail's Haven Access = 6.5m



Map prepared by Kentucky Department of Fish & Wildlife Resources
 Publication Date: September 25, 2014

NOTICE TO BOATERS:
 Public access to Buck Creek is at the following locations: Dahl RD Access, Stab RD Bridge Access, Bent RD Access, Dykes Bridge Access, Poplarville RD Access and Hail's Haven Access.