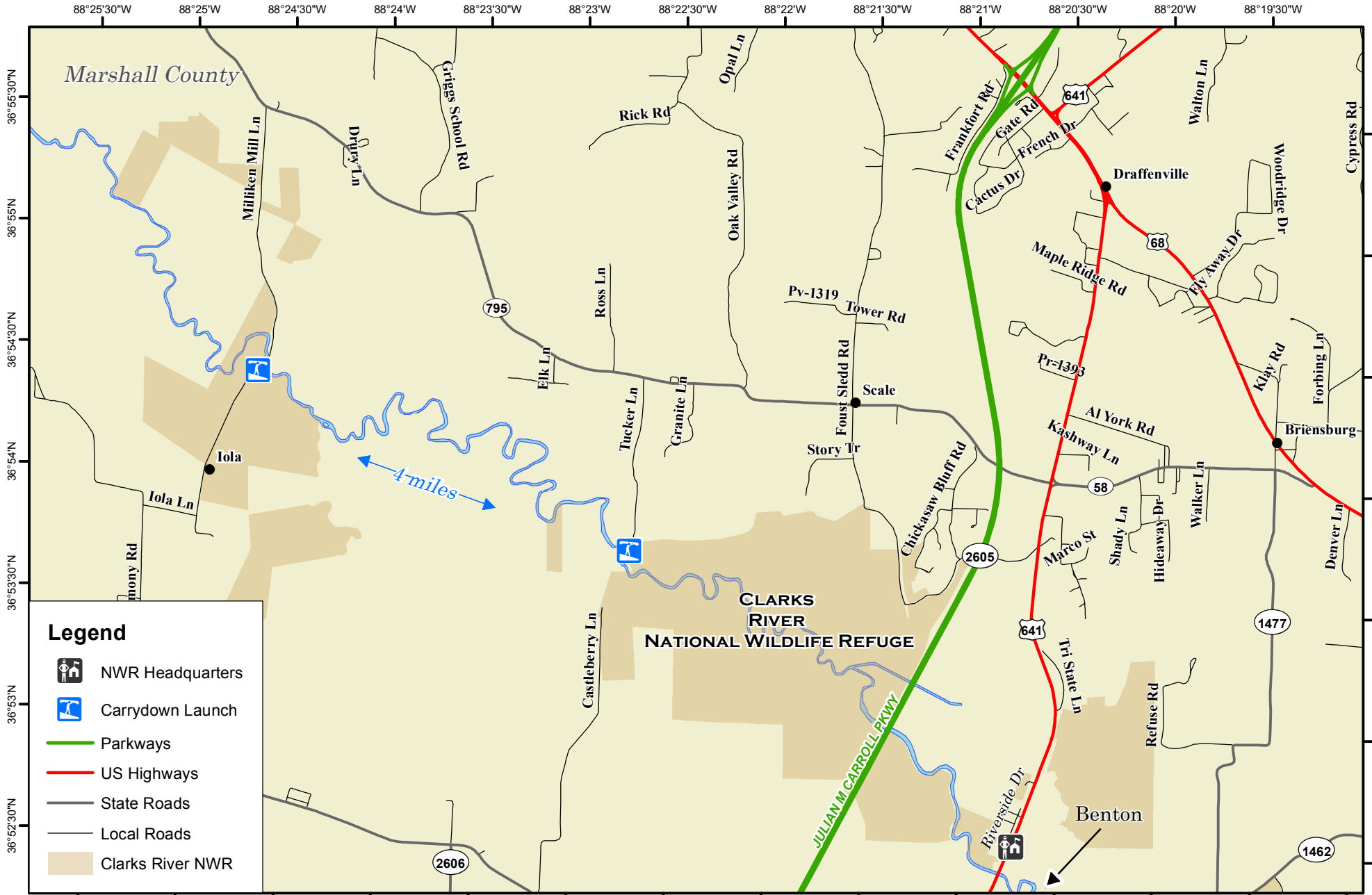


Blue Water Trail: Clarks River



Legend

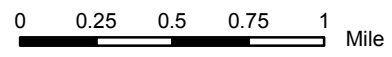
- NWR Headquarters
- Carrydown Launch
- Parkways
- US Highways
- State Roads
- Local Roads
- Clarks River NWR

Ramp to Ramp distance

Milliken Mill Ln to
Tucker Ln = 4 miles



Map prepared by Kentucky
Department of Fish & Wildlife
Resources Publication
Date: September 15, 2011



Scale 1:40,000



NOTICE TO BOATERS:

Public access to Clarks River is at the following locations: Milliken Mill Lane bank access and Tucker Lane bank access, both areas off of KY 795 (Scale Rd).