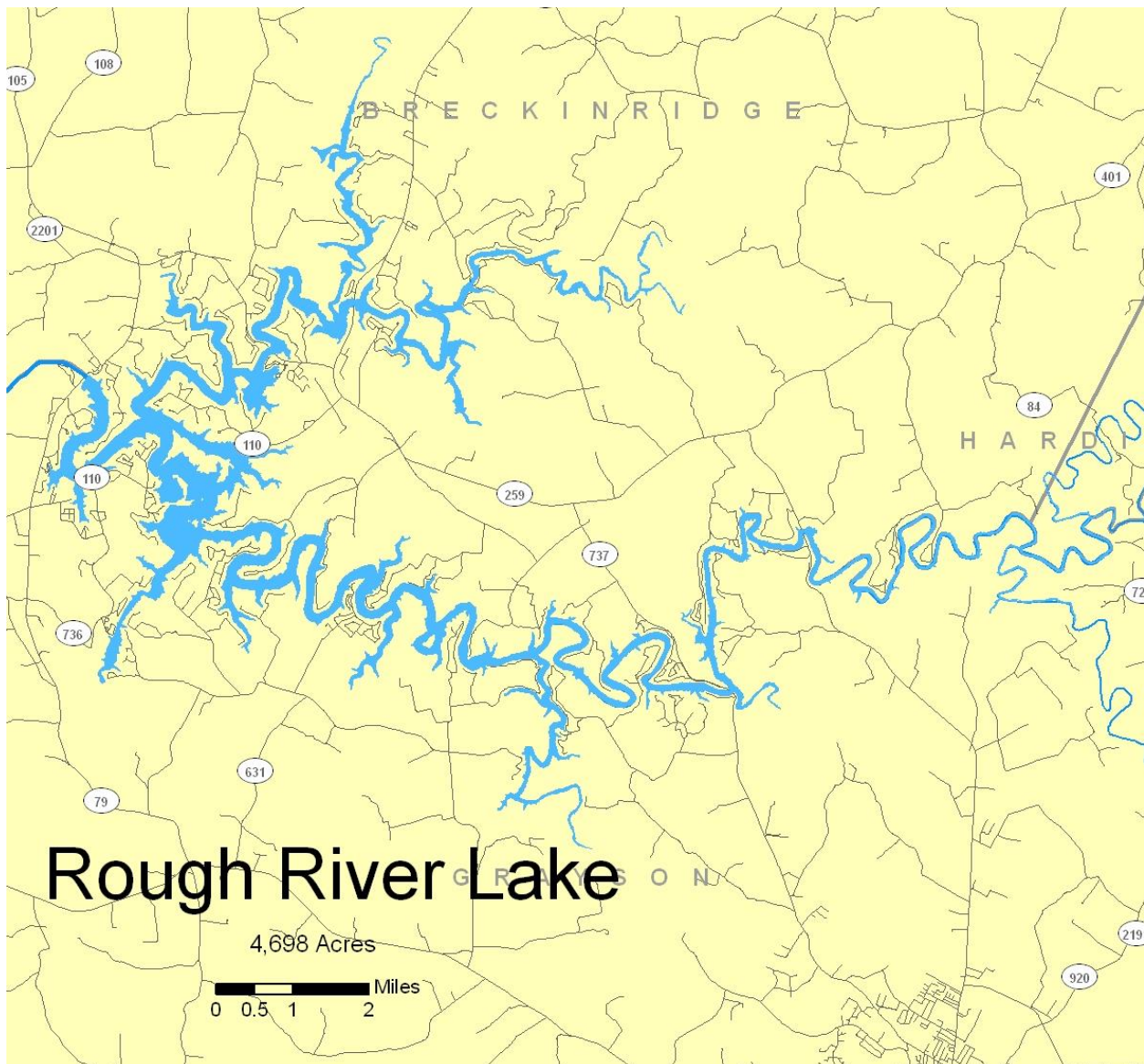


Rough River Lake Bass Assessment 2016

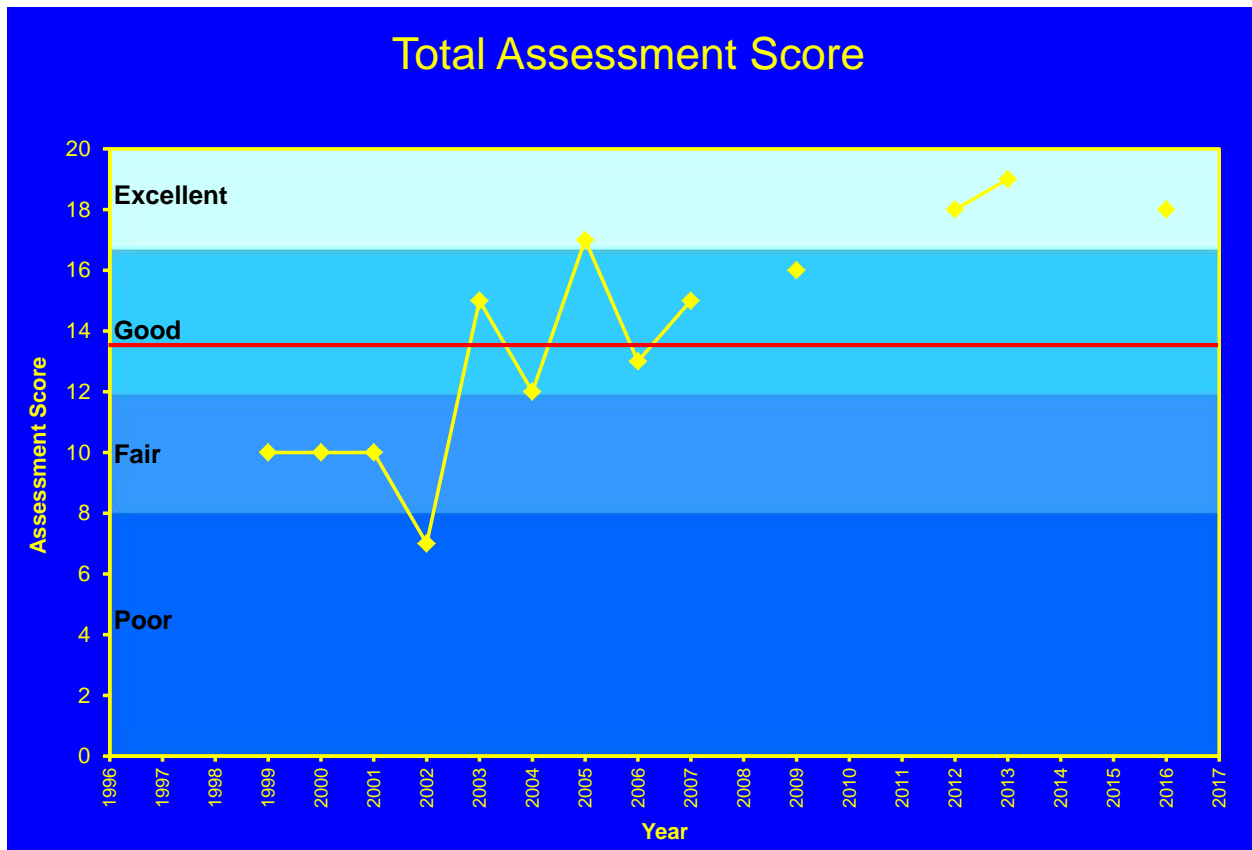
Rough River Lake is a 5,100 acre multipurpose reservoir on Rough River. The lake, located in Breckinridge, Grayson and Hardin counties has 9 boat ramps and 3 marinas and is a popular fishing destination for largemouth bass, hybrid striped bass, crappie and catfish. The following graphs show trends and rankings for each of the five population parameters used in the largemouth bass assessment.

Please see the [Sportfish Assessments](#) page for an explanation of how the assessment works and for a list of other lakes with largemouth bass assessments.



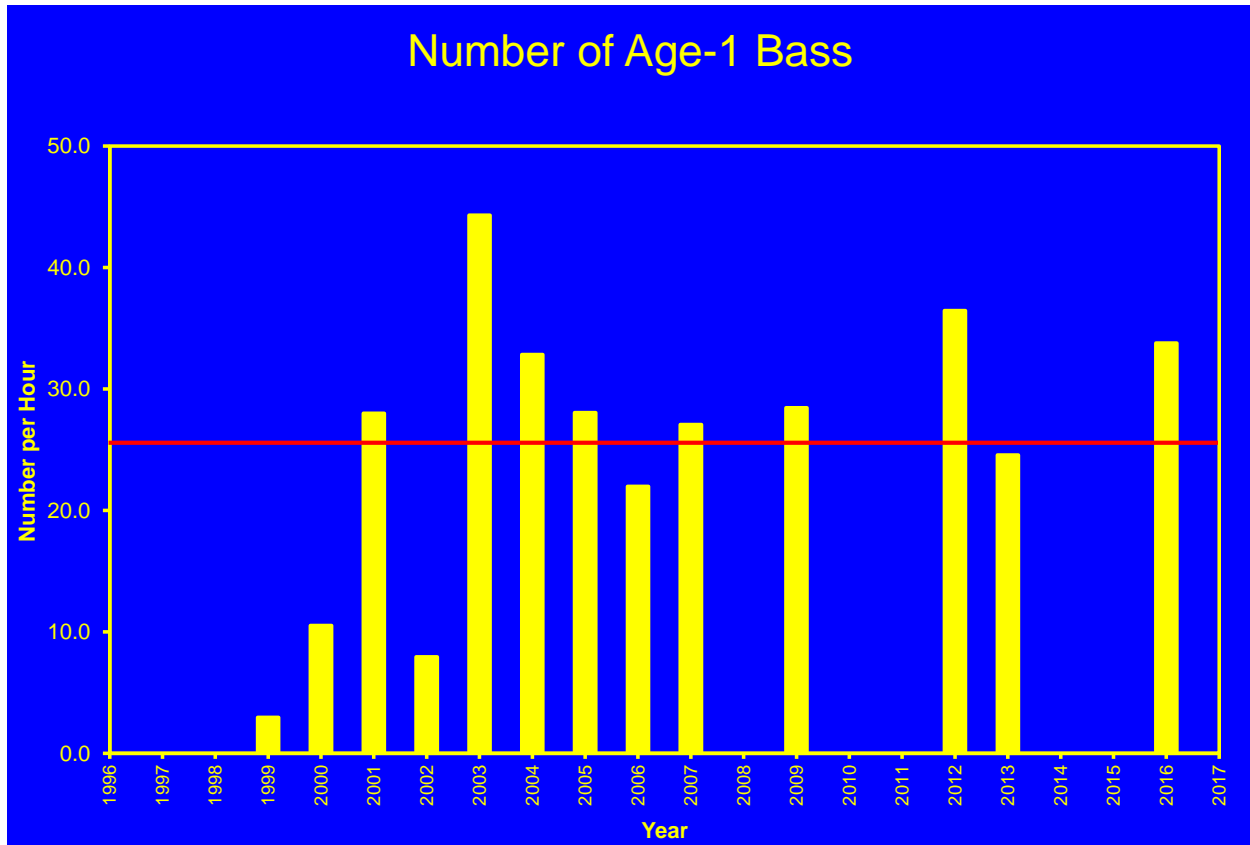
Parameter 1 – Length at age-3 (growth rate)

At Rough River Lake, the length of 3 year old largemouth bass has averaged 13.1 inches since 1996 (represented by the red line). This population parameter is important for management purposes because it tells how well fish are growing and is derived from the total lengths of all three-year old bass collected. When compared to other lakes of similar size, this is considered “Good” growth for largemouth bass. Growth rate can be variable and is generally related to factors such as population density, food availability, and weather.



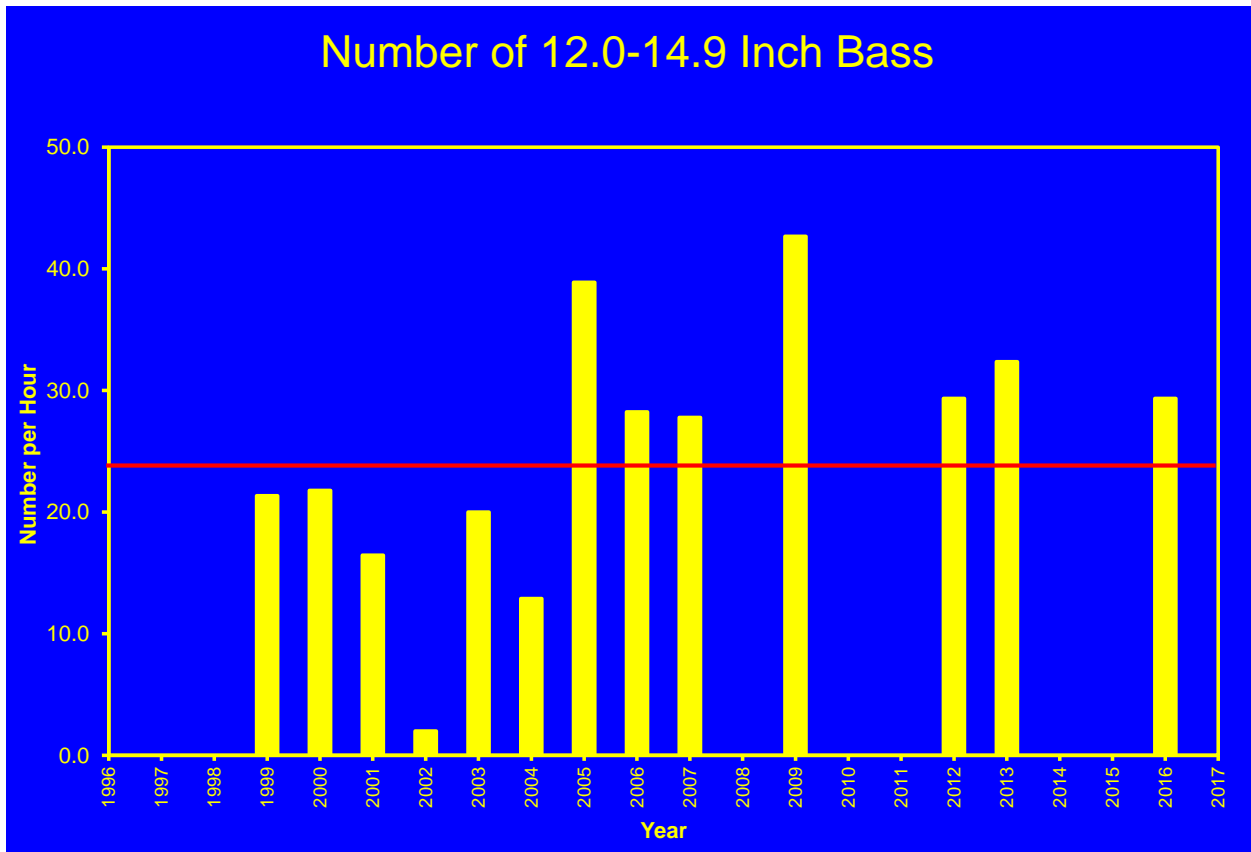
Parameter 2 – Numbers of age-1 bass (how good the spawn was)

KDFWR looks at the electrofishing catch rate of 1 year old largemouth bass to determine the success of the previous year's spawn. This is an important parameter because the number of age-1 bass collected is used as a predictor for how good the fishing will be in years to come. At Rough River Lake, age-1 largemouth bass catch rates have averaged just over 25.0 fish/hour of electrofishing. When compared to other lakes in this size range, this is considered to be a "Good" age-1 catch rate.



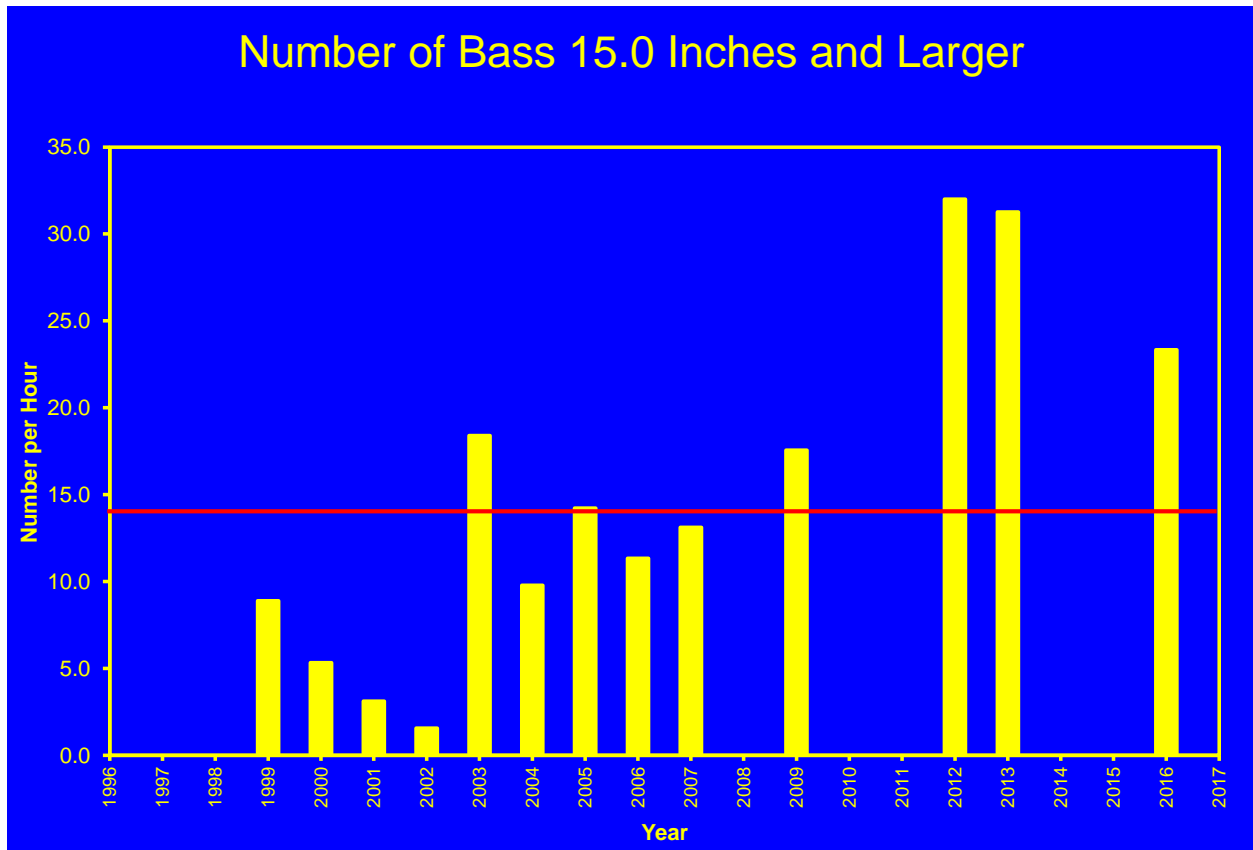
Parameter 3 – Numbers of 12.0-14.9 inch bass

The electrofishing catch of 12.0-14.9 inch largemouth bass has averaged 24.8 fish/hour since 1996 giving Rough River Lake a “Good” rating compared to other lakes of similar size. This parameter is important because these fish will soon grow to exceed the 15.0 inch legal harvestable size limit and result in an increased number of larger bass available to anglers. The catch rate since 2005 has been fairly consistent and above average. The 2009 catch rate is the highest recorded in almost two decades of monitoring.



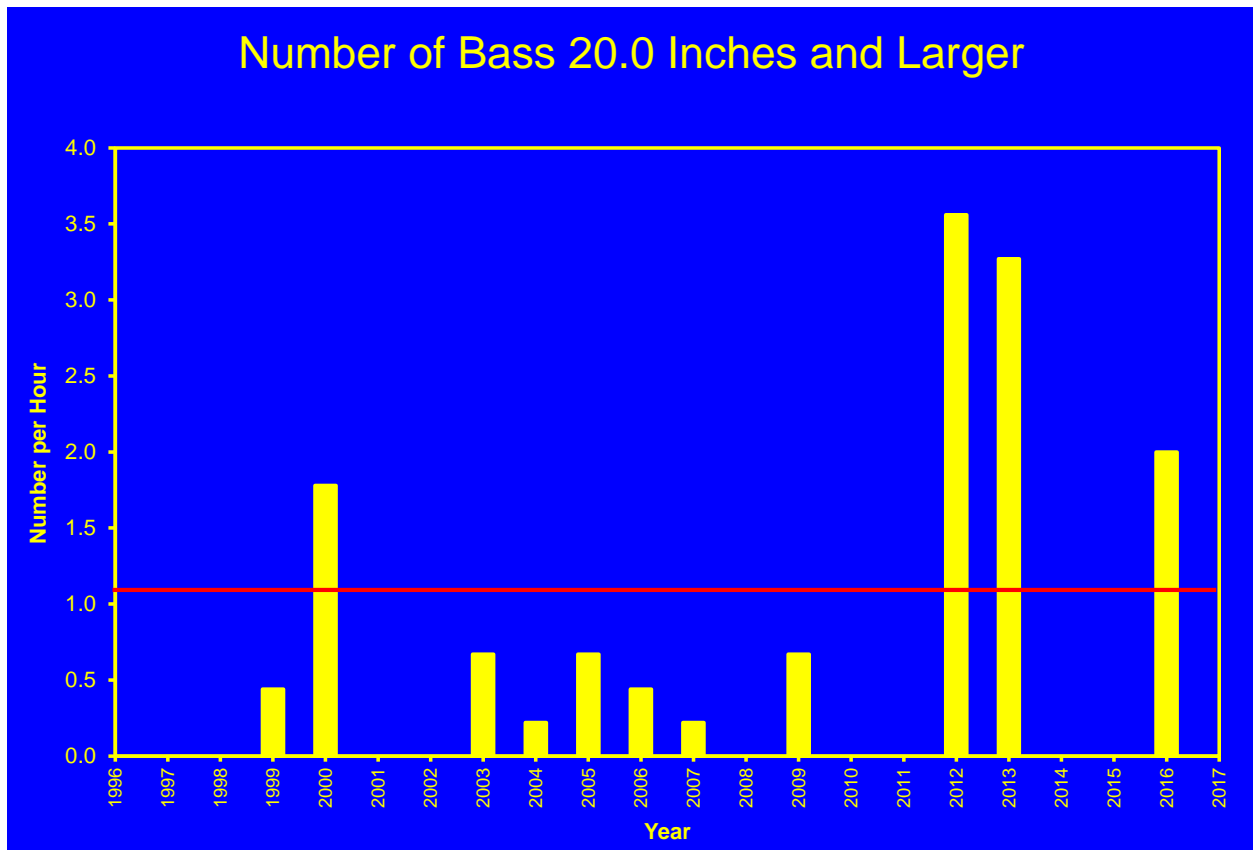
Parameter 4 – Numbers of 15.0 inch and larger bass

This parameter reflects the number of legally harvestable fish in the population. The catch rate of 15.0 inch and larger largemouth bass at Rough River Lake has averaged 14.6 fish/hour of electrofishing since 1996. Although the 2016 catch rate is less than the 2012-2013 catch rates it is still well above average. The 2012 and 2013 catch rates are the highest observed in almost two decades of monitoring. The increasing catch rates of both 12.0-14.9 inch and ≥ 15.0 inch bass indicate bass fishing should continue to be very good for the next several years.



Parameter 5 – Numbers of 20.0-inch and larger bass

The electrofishing catch of 20.0 inch and larger largemouth bass averages just over 1.0 fish/hour for Rough River Lake from 1996 to 2016. When compared to similarly sized lakes, this catch rate is considered “Good”. Fish of this size are difficult to sample consistently and accounts for much of the variability in their catch rates. Like the 12.0-14.9 inch and > 15.0 inch bass, the 2016 catch rate for bass > 20.0 inches is less than the 2012-2013 catch rates, but it is still double the average. Increases in the number of 12.0-14.9 inch and ≥ 15.0 inch bass should lead to a higher catch rate of ≥ 20.0 inch bass, which has been the case in last several years.



Overall – Total Assessment Score (All five parameters added together)

Overall the largemouth bass population assessment at Rough River Lake has averaged a “Good” rating (13.8) since 1996 (indicated by the red line), but have been in the “Excellent” range since 2012. Sampling could not be conducted in 2008, 2010, 2011, and 2015 due to extremely high water levels during the sampling time frame.

Largemouth bass assessment scores at Rough River Lake have been variable but are generally better now than they were prior to 2003 due to an increased number of bass over 12 inches in the population. Sampling data can be highly variable and reiterates the fact that data must be looked at over time and information collected in a given year cannot be used singularly to make management decisions. Yearly sampling will continue to monitor this fishery.

