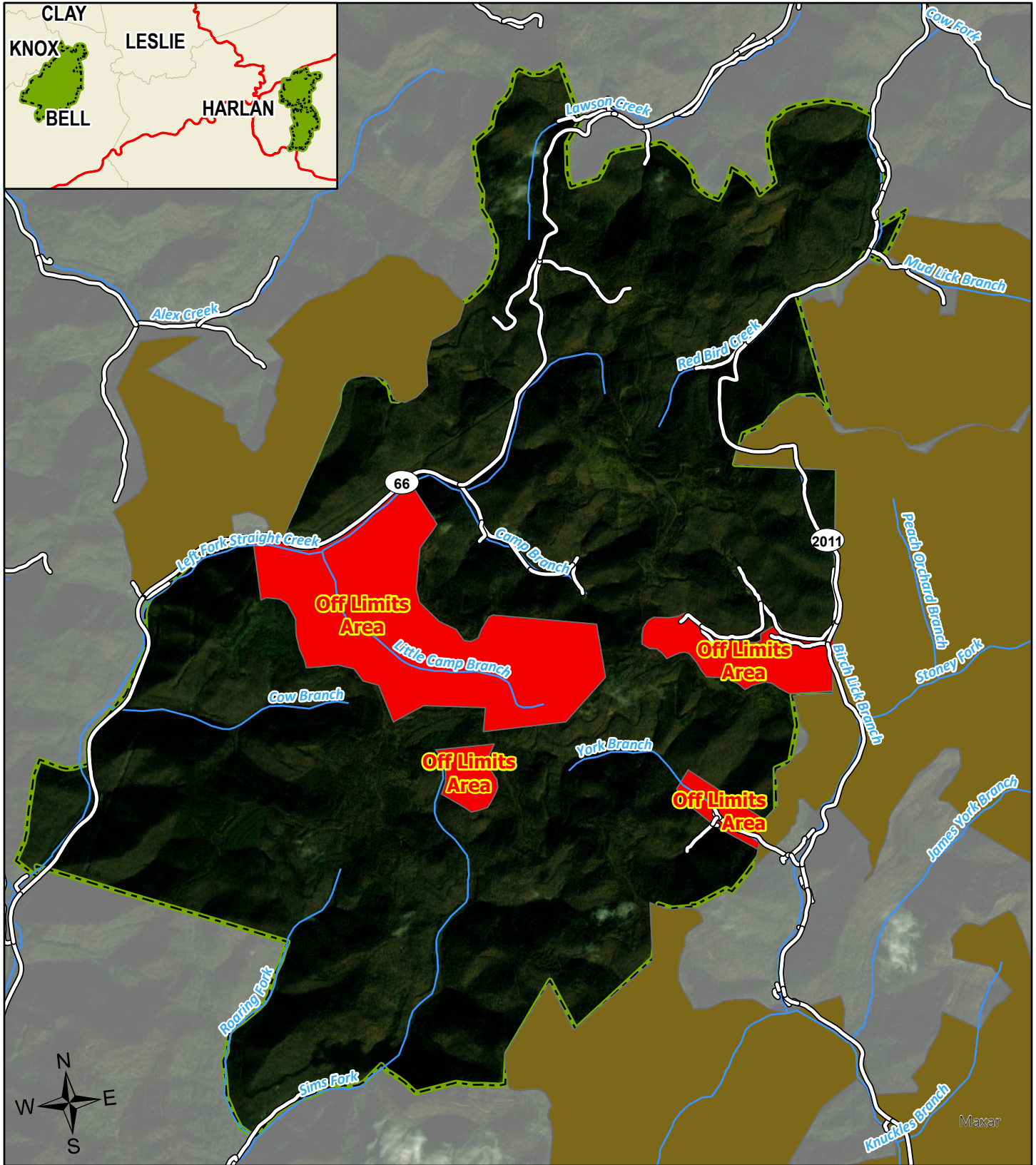
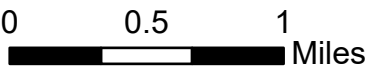


# Asher Hunting Access Area



A map legend and additional information are provided on PDF pages that accompany this map.

Publication Date: 11/7/2022 12:03 PM



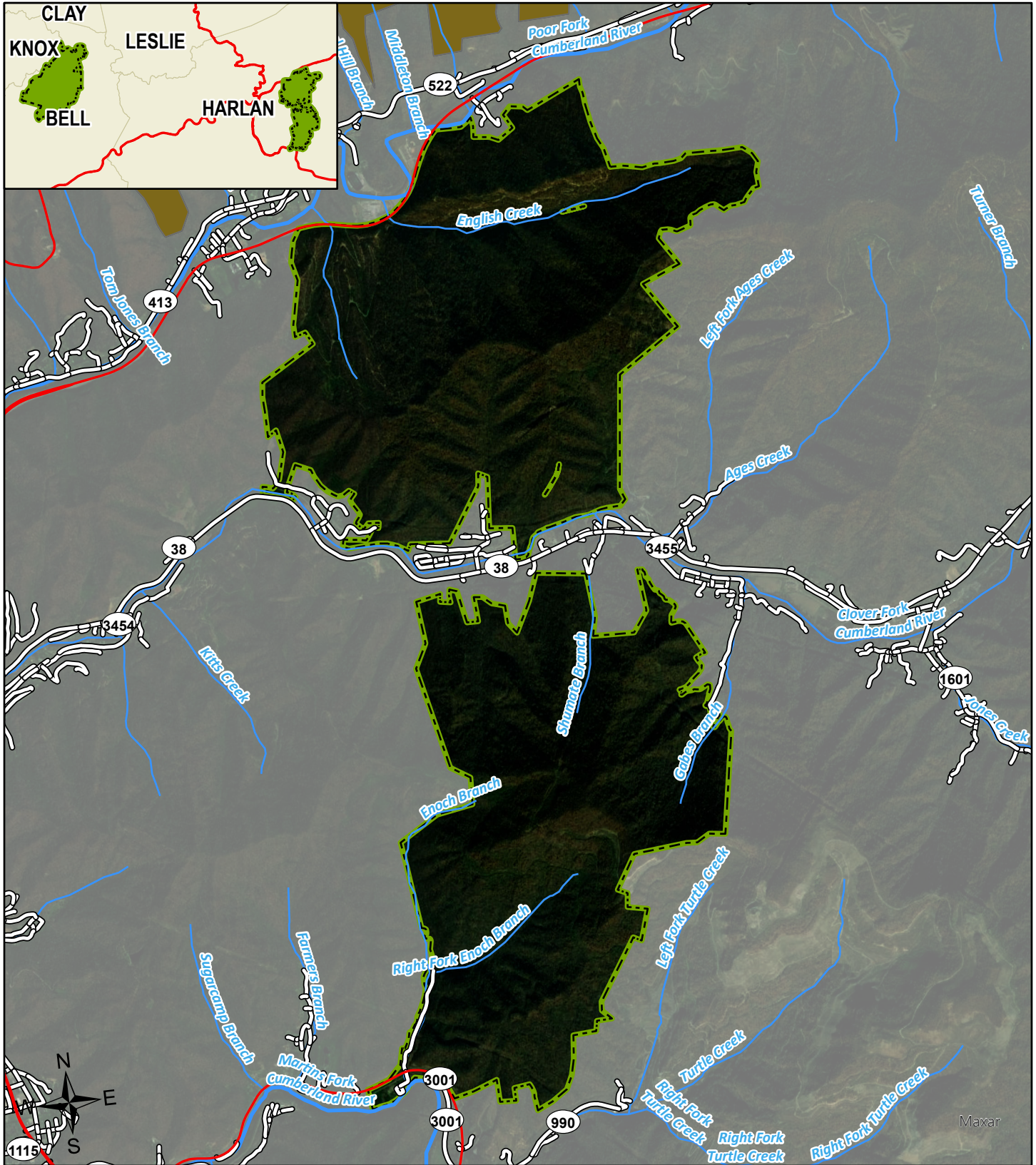
### Note to Map Users

Map prepared by Kentucky Department of Fish & Wildlife Resources (KDFWR). Although KDFWR strives for accuracy, data used to create this map are from a variety of sources and dates; as such, KDFWR makes no representations regarding the accuracy or fitness for use of the information furnished herein.



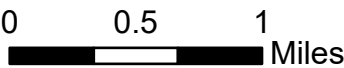


# Asher Hunting Access Area



A map legend and additional information are provided on PDF pages that accompany this map.

Publication Date: 11/7/2022 12:03 PM



## Note to Map Users

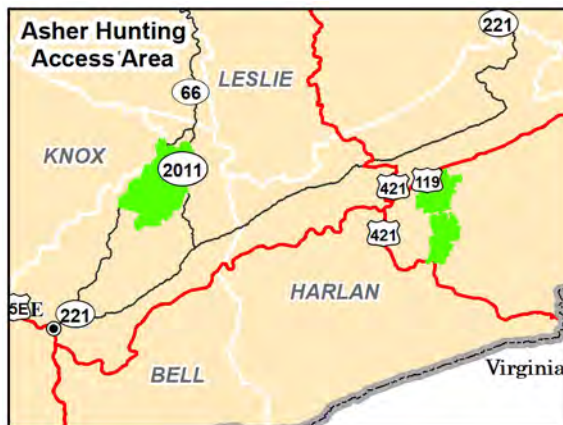
Map prepared by Kentucky Department of Fish & Wildlife Resources (KDFWR). Although KDFWR strives for accuracy, data used to create this map are from a variety of sources and dates; as such, KDFWR makes no representations regarding the accuracy or fitness for use of the information furnished herein.

# Asher Hunting Access Area Information

## Public Hunting Area Location



## Regional Locator



## Directions & Description:

**To the Western Tract:** From US 25E/HWY 66 in Pineville, travel 1.5 miles east on HWY 66, and turn right (east) onto HWY 221. Travel 9.2 miles and turn left (north) onto HWY 2011. Go 5.7 miles and turn left at the top of the hill. The western side of the area may also be reached from HWY 66, 13 miles northeast from Pineville.

**To the Eastern Tracts:** Four miles east of Harlan on both sides of state road 38. The southern tract is also accessible off state road 2074.

Area is open to hunting for statewide regulations and rules and regulations in effect for the county. Habitat consists primarily of reclaimed surface-mined and forested land. Foot travel only off area mine roads or behind locked gates. Off-limit areas are indicated on the map.

Owned by Asher Land and Mineral, LLLP. The western tract is located within Elk Hunting Unit 2. The eastern tracts are locations within Elk Hunting Unit 3. Please refer to the elk portion of our website.

## Online Resources

Public Hunting Area users must abide by the Kentucky hunting, trapping, and fishing regulations. It is incumbent on persons using Public Hunting Areas to become familiar with these regulations. Kentucky Department of Fish & Wildlife Resources provides these regulations on our Web site at [fw.ky.gov](http://fw.ky.gov) or by calling 1-800-858-1549.

## Hunting Access Area Overview

**Location & Size:** Bell & Harlan County, 13,143 acres.

**Contact:** Wes Hodges, (606) 654-2533

**Elevation:** minimum 1200 feet, maximum 3360 feet. **Entrance GPS coordinates:** Latitude N 36.89671, Longitude W -83.57717

**Area Habitat:** Open land 21%, forest 79%, wetland 0%, water < 1%



# Wildlife Management Area Map Notes & Legend

## NOTE TO MAP USERS:

For most WMA maps the landscape is depicted using a combination of elevation contours, hillshading and a green tint indicating woodland areas that is derived from satellite imagery. On WMAs that are relatively small or have a history of surface mining aerial photography is used.

## WMA Map Legend

	WMA Office		WMA Boundary		Populated Place
	Information Kiosk		Aerial imagery		Kentucky Boundary
	Check station		Other Public Hunting Areas		Interstate Highway
	Mobility-impaired Hunting Blind		Area Off Limits		Kentucky Parkway
	Trailhead		No Hunting		U.S. Highway
	Horseback Trailhead		Seasonally Restricted Access		State Highway
	Parking Lot		Mobility Impaired Hunting Area		Local Road
	Picnic Area		Primitive Hunting Only		Forest Service Road
	Restrooms		Open Water		Active Railroad
	Wildlife Viewing Site		Wetland		Abandoned Railroad
	Interpretive Site		Woodland		Federal Recreation Trail
	Retriever Training Site				WMA Road
	Gate				WMA Foot Trail
	Campground				WMA Horse Trail
	Cemetery				Gas Pipeline
	Corps of Engineers Office				Powerline
	Waterfowl Blind				Rivers and Streams
	Any Boat				Dam
	Bank Access				Trout Waters
	Carrydown Only				Elevation Contour
	Fishing Pier				
	Small Boat Only				
	Shooting Range				
	State Park Office				