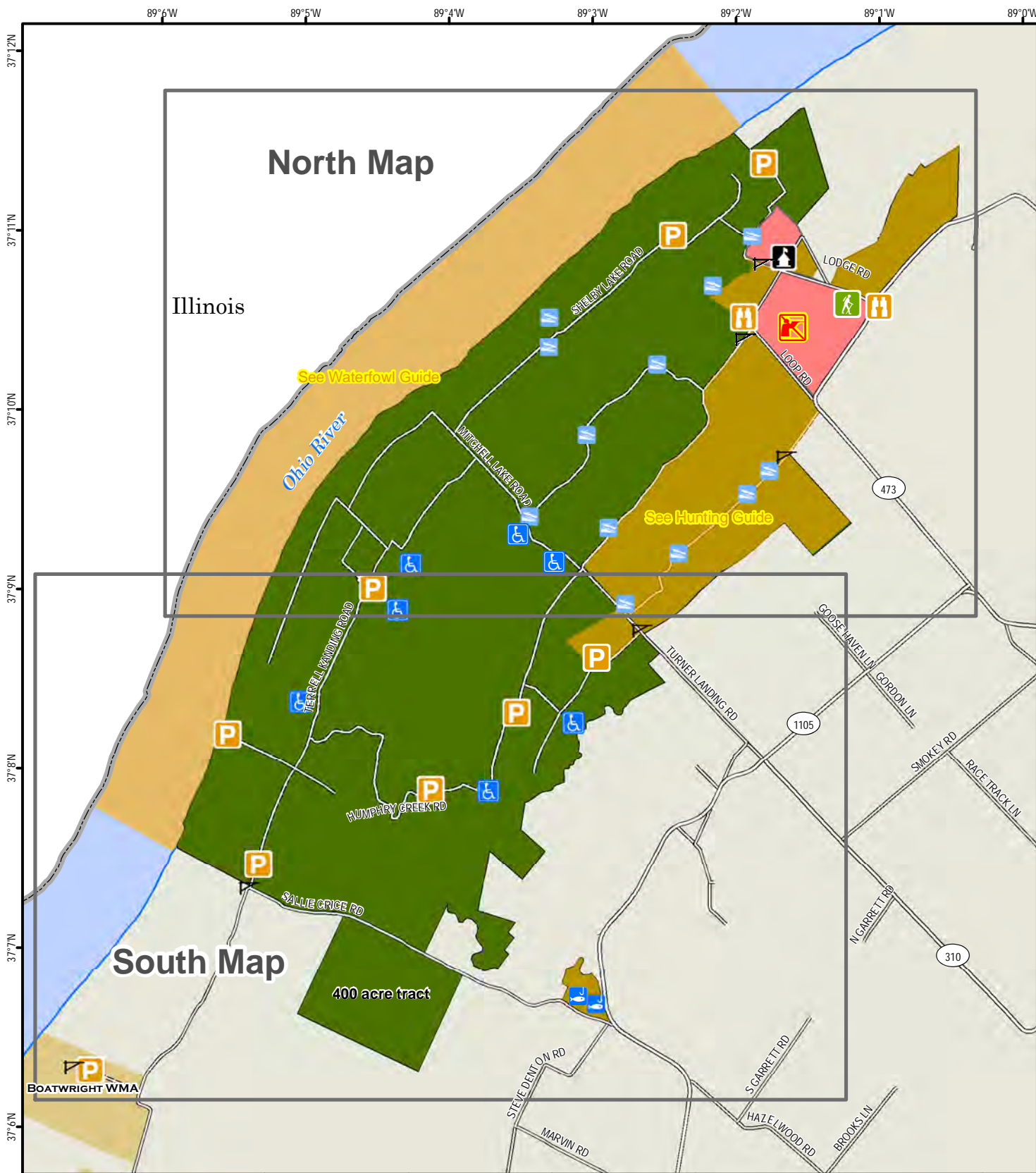


Ballard Wildlife Management Area Index Map



A map legend and additional information are provided on PDF pages that accompany this map.

Publication Date: 11/16/2016



0 0.25 0.5 0.75 1 Mile

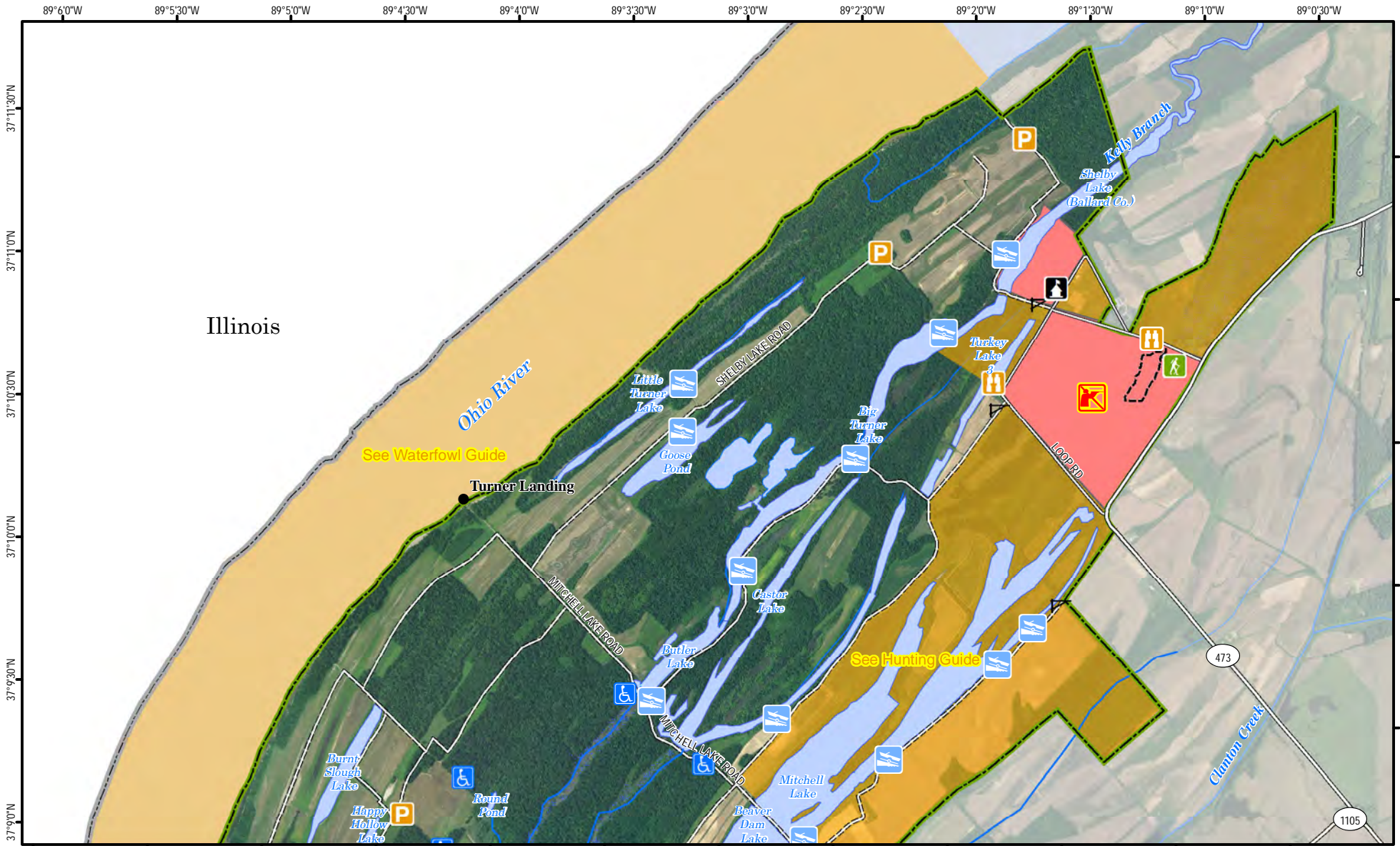
Scale 1:55,000

Note to Map Users

Map prepared by Kentucky Department of Fish & Wildlife Resources (KDFWR). Although KDFWR strives for accuracy, data used to create this map are from a variety of sources and dates; as such, KDFWR makes no representations regarding the accuracy or fitness for use of the information furnished herein.

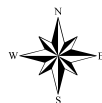


Ballard Wildlife Management Area - North



A map legend and additional information are provided on PDF pages that accompany this map.

Publication Date: 11/16/2016
Imagery from Farm Service Agency 2016



0 0.25 0.5 0.75 1 Mile

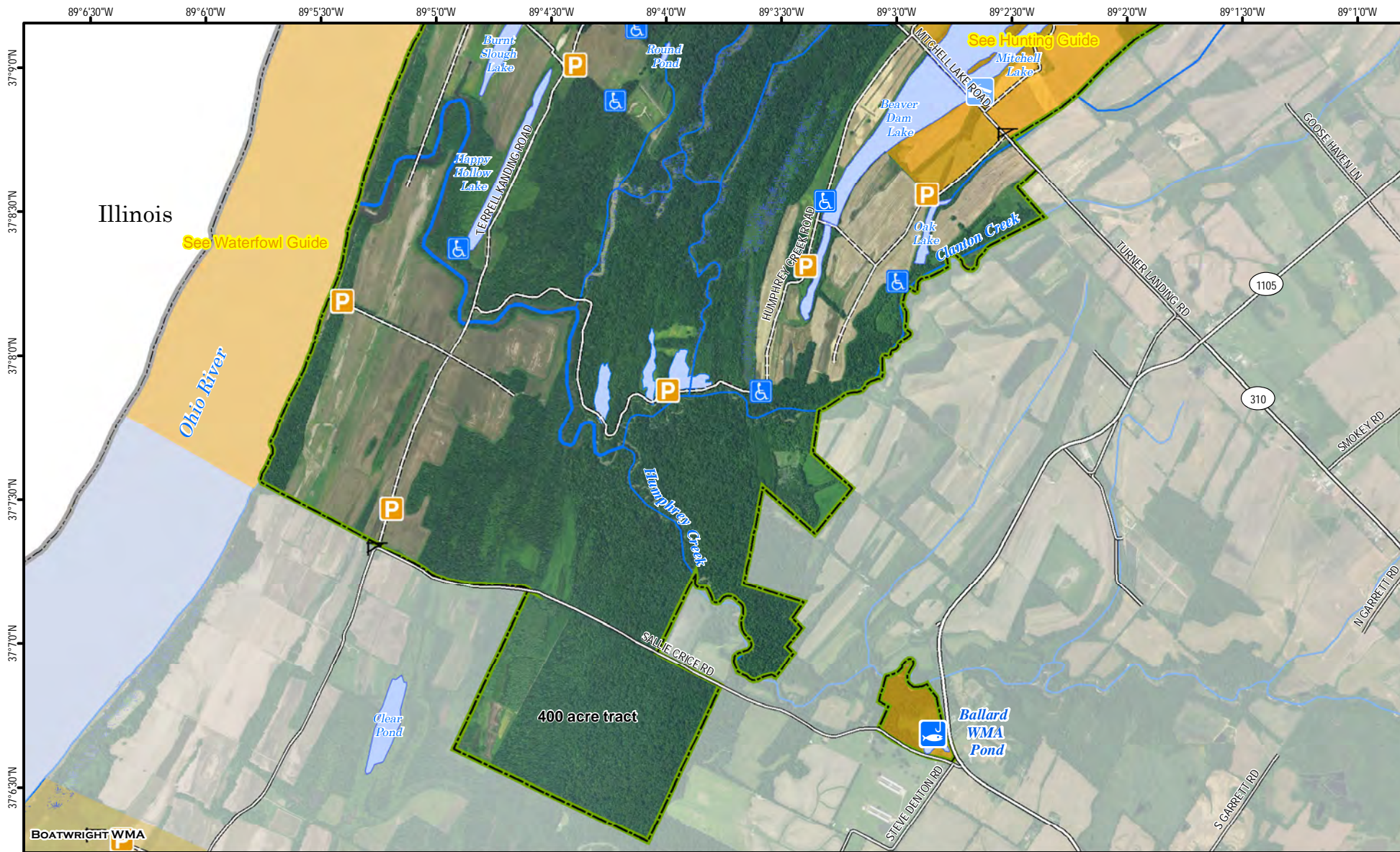
Scale 1:35,000



Note to Map Users

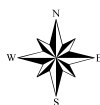
Map prepared by Kentucky Department of Fish & Wildlife Resources (KDFWR). Although KDFWR strives for accuracy, data used to create this map are from a variety of sources and dates; as such, KDFWR makes no representations regarding the accuracy or fitness for use of the information furnished herein.

Ballard Wildlife Management Area - South



A map legend and additional information are provided on PDF pages that accompany this map.

Publication Date: 11/16/2016
Imagery from Farm Service Agency 2016



0 0.25 0.5 0.75 1 Mile

Scale 1:35,000



Note to Map Users

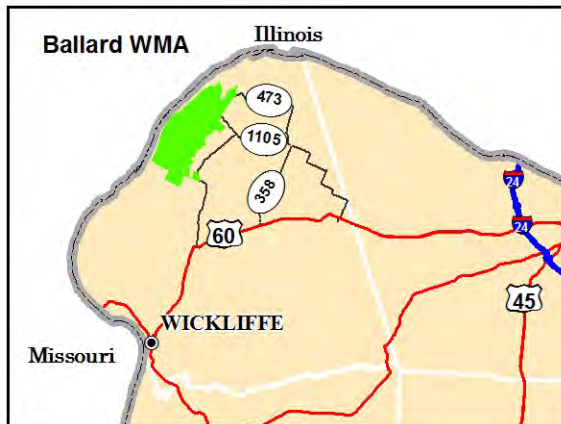
Map prepared by Kentucky Department of Fish & Wildlife Resources (KDFWR). Although KDFWR strives for accuracy, data used to create this map are from a variety of sources and dates; as such, KDFWR makes no representations regarding the accuracy or fitness for use of the information furnished herein.

Ballard WMA Information

Public Hunting Area Location



Regional Locator



Directions & Description:

Thirty miles west of Paducah, on Ohio River. From Paducah take US 60 for 17 miles to LaCenter, take KY 358 north 5.6 miles to KY 1105. Turn west through Bandana, follow KY 1105 to KY 473. Travel 6 miles to Lodge Road. Several roads within area.

Sloughs and agricultural bottomlands, some hardwood stands. Wintering bald eagles, eagle nests. Fishing in 11 lakes on area.

Special regulations for hunting and fishing. The 400-acre tract located south of Sallie Crice/Terrell Landing Road (formerly the Ballard Hunting Unit) falls under Boatwright WMA Olmsted and Peal Unit hunting regulations. Fee, advance application required of deer, waterfowl hunters. Write, email or call Kentucky Department of Fish and Wildlife Resources for additional information.

Area closed Oct. 15-March 15. Owned by Kentucky Department of Fish and Wildlife Resources.

Online Resources

Public Hunting Area users must abide by the Kentucky hunting, trapping, and fishing regulations. It is incumbent on persons using Public Hunting Areas to become familiar with these regulations. Kentucky Department of Fish & Wildlife Resources provides these regulations on our Web site at fw.ky.gov or by calling 1-800-858-1549.

WMA Overview

Location & Size: Ballard County, 8,015 acres

Contact: (270) 224-2244

Elevation: minimum 286 feet, maximum 367 feet.

Entrance GPS coordinates: Latitude N 37.18212, Longitude W -89.02707

Area Habitat: mostly wetland: open land 27%, forest 28%, wetland 39%, open water 6%.

Wildlife Management Area Map Notes & Legend

NOTE TO MAP USERS:

For most WMA maps the landscape is depicted using a combination of elevation contours, hillshading and a green tint indicating woodland areas that is derived from satellite imagery. On WMAs that are relatively small or have a history of surface mining aerial photography is used.

WMA Map Legend

	WMA Office		WMA Boundary		Populated Place
	Information Kiosk		Aerial photograph		Kentucky Boundary
	Check station		Other Public Hunting Areas		Interstate Highway
	Mobility-impaired Hunting Site		Area Off Limits		Kentucky Parkway
	Trailhead		No Hunting		U.S. Highway
	Horseback Trailhead		Seasonally Restricted Access		State Highway
	Parking Lot		Mobility Impaired Hunting Area		Local Road
	Picnic Area		Primitive Hunting Only		Forest Service Road
	Restrooms		Foot Traffic Only		Active Railroad
	Wildlife Viewing Site		Open Water		Abandoned Railroad
	Interpretive Site		Wetland		Federal Recreation Trail
	Retriever Training Site		Woodland		WMA Road
	Gate				WMA Foot Trail
	Campground				WMA Horse Trail
	Cemetery				Gas Pipeline
	Corps of Engineers Office				Powerline
	Waterfowl Blind				Rivers and Streams
	Shooting Range				Dam
	Established Bank Access				Trout Waters
	Fishing Pier				Elevation Contour
	Carrydown Launch				
	Small Boat Ramp				
	Large Boat Ramp				
	State Park Office				