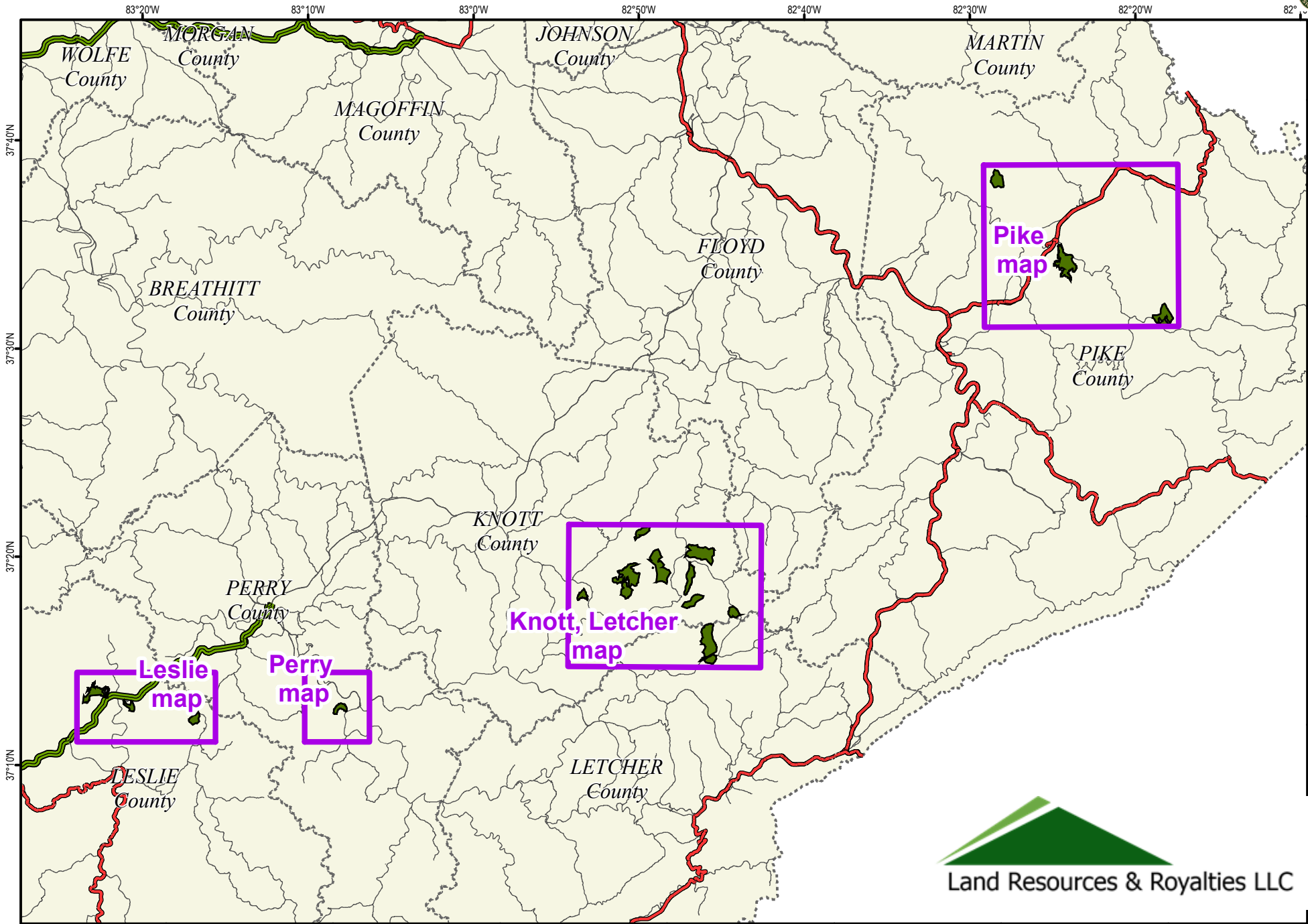
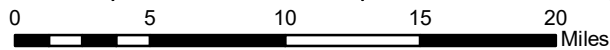


Betterment Wildlife Hunting Access Area - Index Map

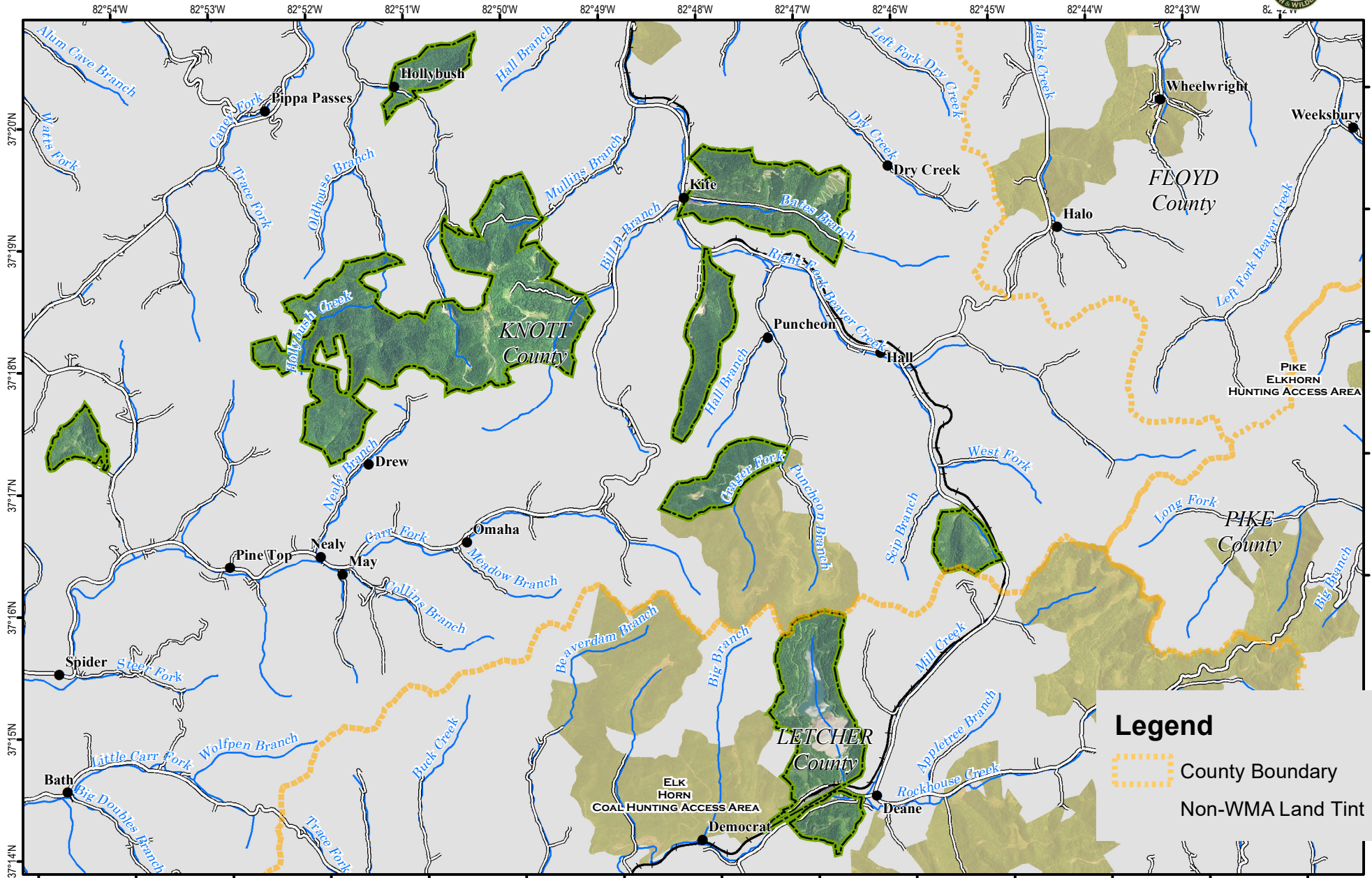


A map legend and additional information are provided on PDF pages that accompany this map.



Note to Map Users
Map prepared by Kentucky Department of Fish & Wildlife Resources (KDFWR). Although KDFWR strives for accuracy, data used to create this map are from a variety of sources and dates, as such, KDFWR makes no representations regarding the accuracy or fitness for use of the information furnished herein.

Betterment Wildlife Hunting Access Area - Knott Letcher

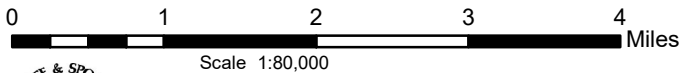
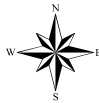


Legend

- County Boundary
- Non-WMA Land Tint

A map legend and additional information are provided on PDF pages that accompany this map.

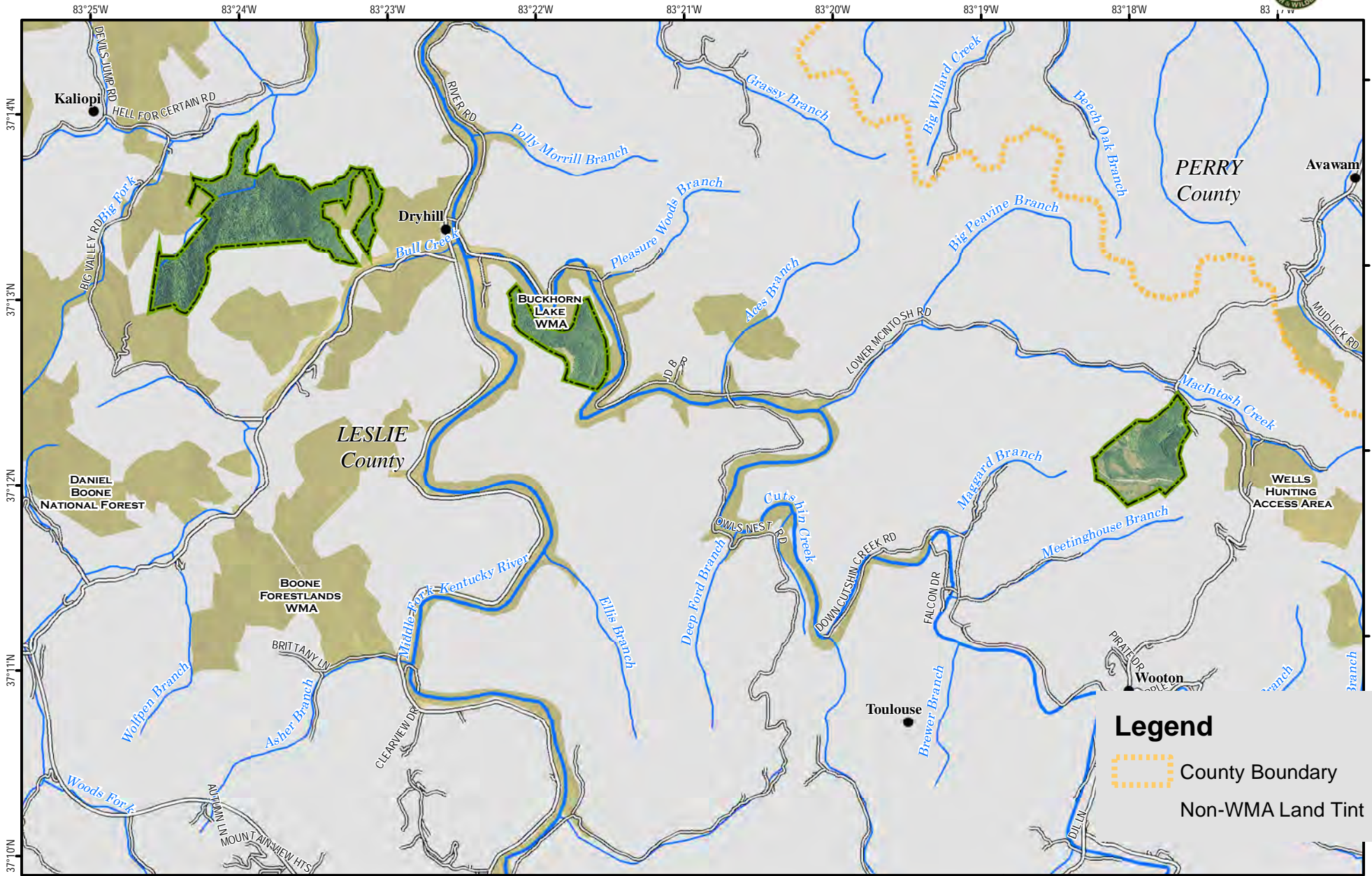
Publication Date: 8/28/2020
Imagery from Farm Service Agency 2018



Note to Map Users

Map prepared by Kentucky Department of Fish & Wildlife Resources (KDFWR). Although KDFWR strives for accuracy, data used to create this map are from a variety of sources and dates; as such, KDFWR makes no representations regarding the accuracy or fitness for use of the information furnished herein.

Betterment Wildlife Hunting Access Area - Leslie

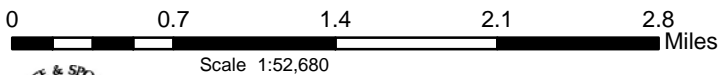
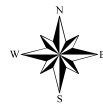


Legend

- County Boundary
- Non-WMA Land Tint

A map legend and additional information are provided on PDF pages that accompany this map.

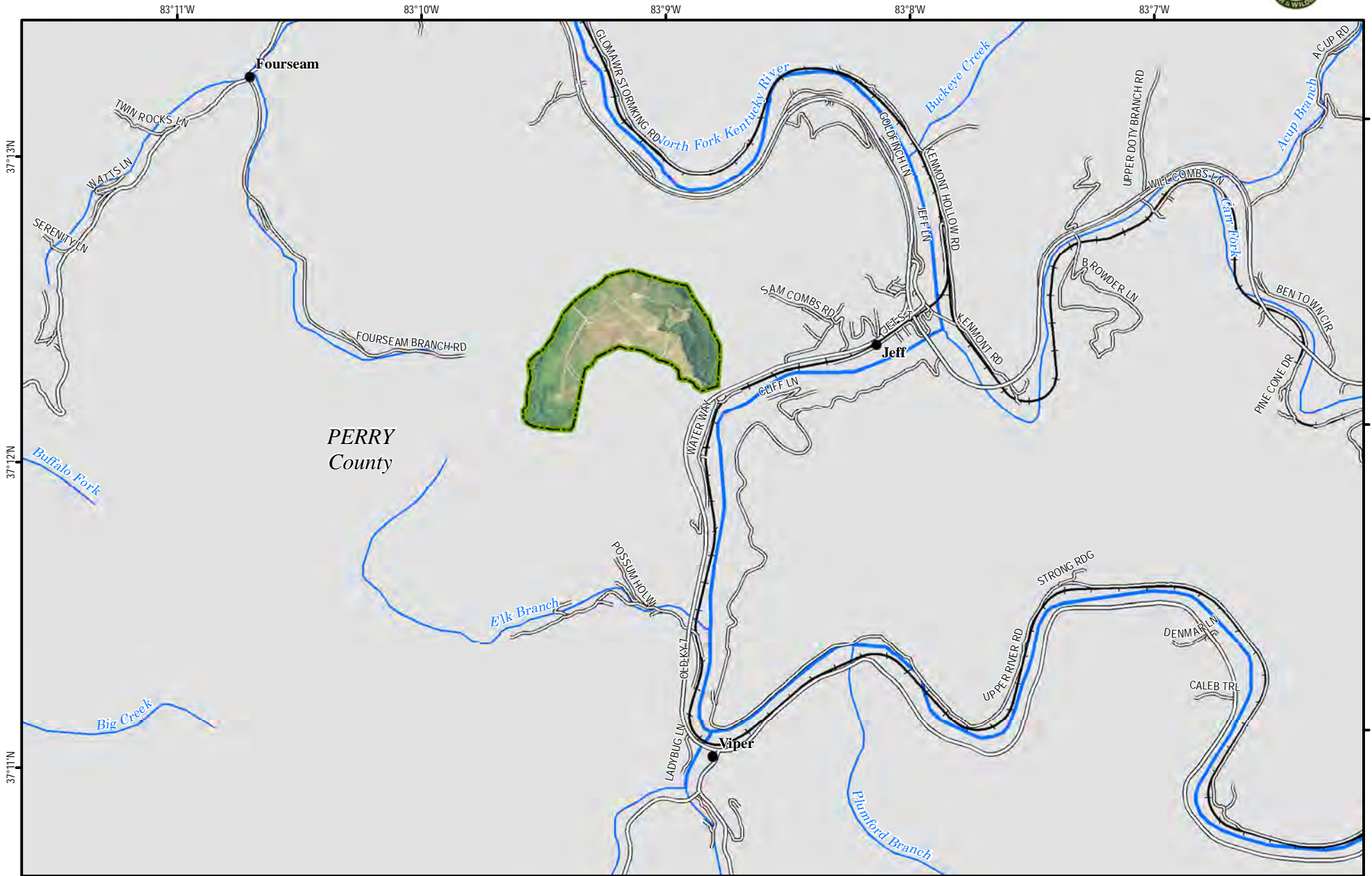
Publication Date: 8/28/2020
Imagery from Farm Service Agency 2018



Note to Map Users

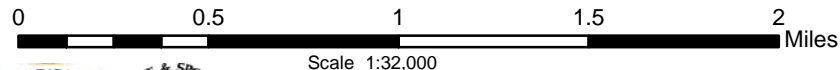
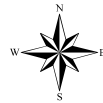
Map prepared by Kentucky Department of Fish & Wildlife Resources (KDFWR). Although KDFWR strives for accuracy, data used to create this map are from a variety of sources and dates; as such, KDFWR makes no representations regarding the accuracy or fitness for use of the information furnished herein.

Betterment Wildlife Hunting Access Area - Perry



A map legend and additional information are provided on PDF pages that accompany this map.

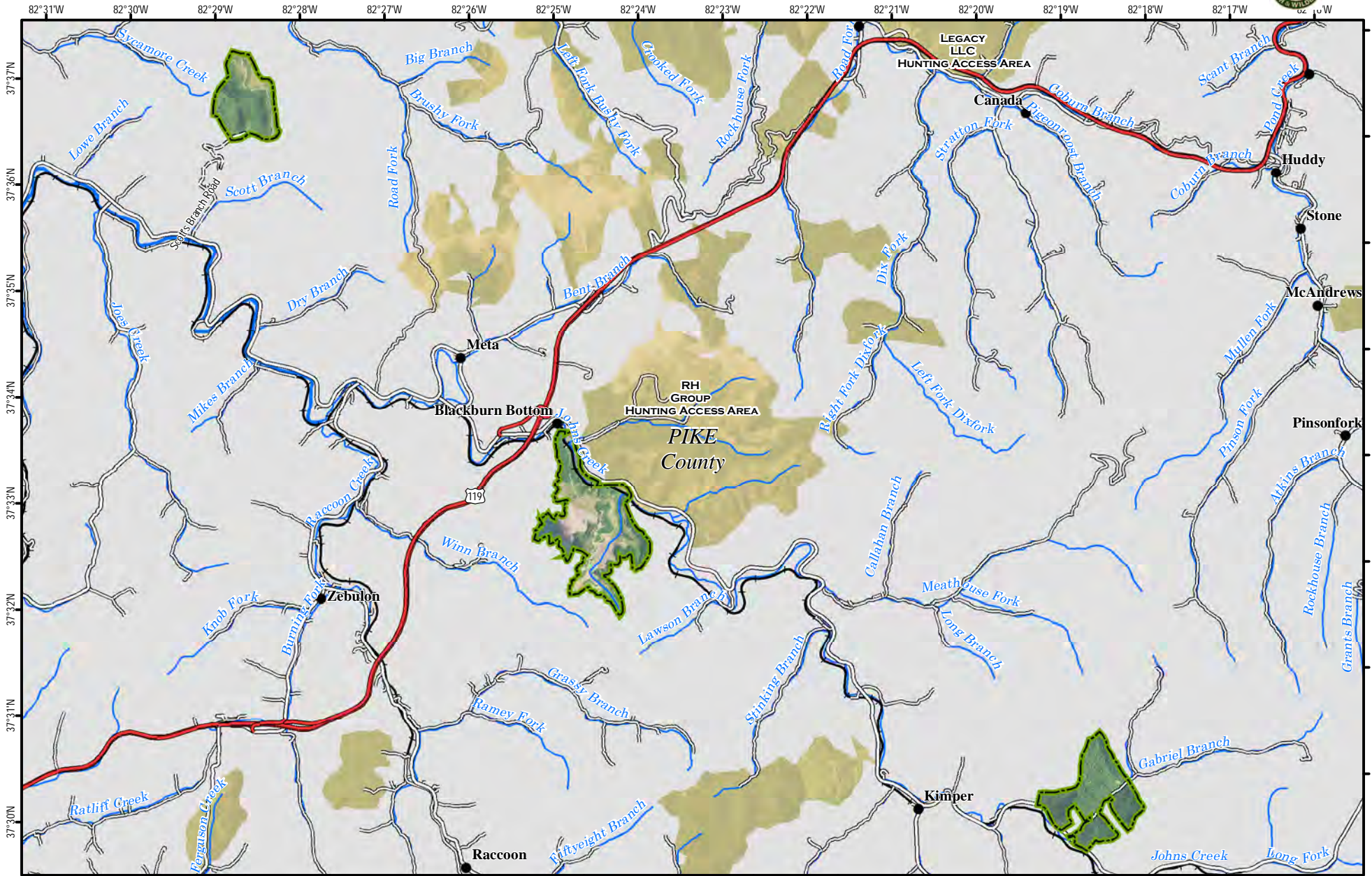
Publication Date: 8/28/2020
Imagery from Farm Service Agency 2018



Note to Map Users

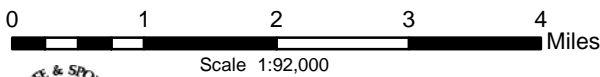
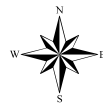
Map prepared by Kentucky Department of Fish & Wildlife Resources (KDFWR). Although KDFWR strives for accuracy, data used to create this map are from a variety of sources and dates; as such, KDFWR makes no representations regarding the accuracy or fitness for use of the information furnished herein.

Betterment Wildlife Hunting Access Area - Pike



A map legend and additional information are provided on PDF pages that accompany this map.

Publication Date: 8/30/2020
Imagery from Farm Service Agency 2018



Note to Map Users

Map prepared by Kentucky Department of Fish & Wildlife Resources (KDFWR). Although KDFWR strives for accuracy, data used to create this map are from a variety of sources and dates; as such, KDFWR makes no representations regarding the accuracy or fitness for use of the information furnished herein.

Betterment Wildlife Hunting Access Area Information

Public Hunting Area Location



Area Habitat: Open land 26%, forest 72%, wetland 0%, water 2%

Directions & Description:

This property is located in southeastern Kentucky and divided amongst several tracts across numerous counties. Habitat varies on the individual tracts, but is predominantly forested with some surface mining areas of pasture and shrub/scrub habitat as well. Active surface mining operations or other natural resource extractions may still be taking place on the area. Please be careful when navigating the haul roads and stay well away from equipment and high wall mines. Semi-trucks and mining equipment always have the right-of-way!

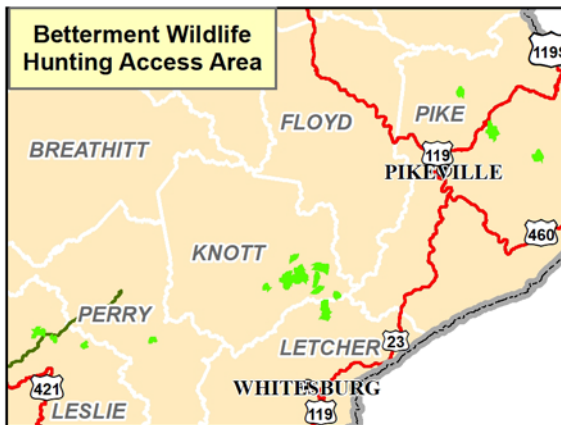
Open under statewide regulations for all game species.

Owned by Land Resources and Royalties LLC. Damage to any trees, such as screw-in tree steps, baiting, and hunting over or with the use of bait are prohibited on the properties.

Online Resources

Public Hunting Area users must abide by the Kentucky hunting, trapping, and fishing regulations. It is incumbent on persons using Public Hunting Areas to become familiar with these regulations. Kentucky Department of Fish & Wildlife Resources provides these regulations on our Web site at fw.ky.gov or by calling 1-800-858-1549.

Regional Locator



Hunting Access Area Overview

Location & Size: Knott, Leslie, Letcher, Perry, Pike, 5,923 acres.

Contact: Pike County Scott Freidhof – (606)-783-8634, For Knot, Letcher, Wes Hodges (606) 654-2533, For Leslie, Perry Becky Littleton 606-877-8409. Contact Dan Crank 606-435-6225 for elk hunting questions.

Elevation: minimum 760 feet, maximum 2280 feet.


Entrance GPS coordinates: Latitude N 37.30773
Longitude W -82.82232

Wildlife Management Area Map Notes & Legend

NOTE TO MAP USERS:

For most WMA maps the landscape is depicted using a combination of elevation contours, hillshading and a green tint indicating woodland areas that is derived from satellite imagery. On WMAs that are relatively small or have a history of surface mining aerial photography is used.

WMA Map Legend

	WMA Office		WMA Boundary		Populated Place
	Information Kiosk		Aerial photograph		Kentucky Boundary
	Check station		Other Public Hunting Areas		Interstate Highway
	Mobility-impaired Hunting Blind		Area Off Limits		Kentucky Parkway
	Trailhead		No Hunting		U.S. Highway
	Horseback Trailhead		Seasonally Restricted Access		State Highway
	Parking Lot		Mobility Impaired Hunting Area		Local Road
	Picnic Area		Primitive Hunting Only		Forest Service Road
	Restrooms		Foot Traffic Only		Active Railroad
	Wildlife Viewing Site		Open Water		Abandoned Railroad
	Interpretive Site		Wetland		Federal Recreation Trail
	Retriever Training Site		Woodland		WMA Road
	Gate				WMA Foot Trail
	Campground				WMA Horse Trail
	Cemetery				Gas Pipeline
	Corps of Engineers Office				Powerline
	Waterfowl Blind				Rivers and Streams
	Shooting Range				Dam
	Established Bank Access				Trout Waters
	Fishing Pier				Elevation Contour
	Carrydown Launch				
	Small Boat Ramp				
	Large Boat Ramp				
	State Park Office				