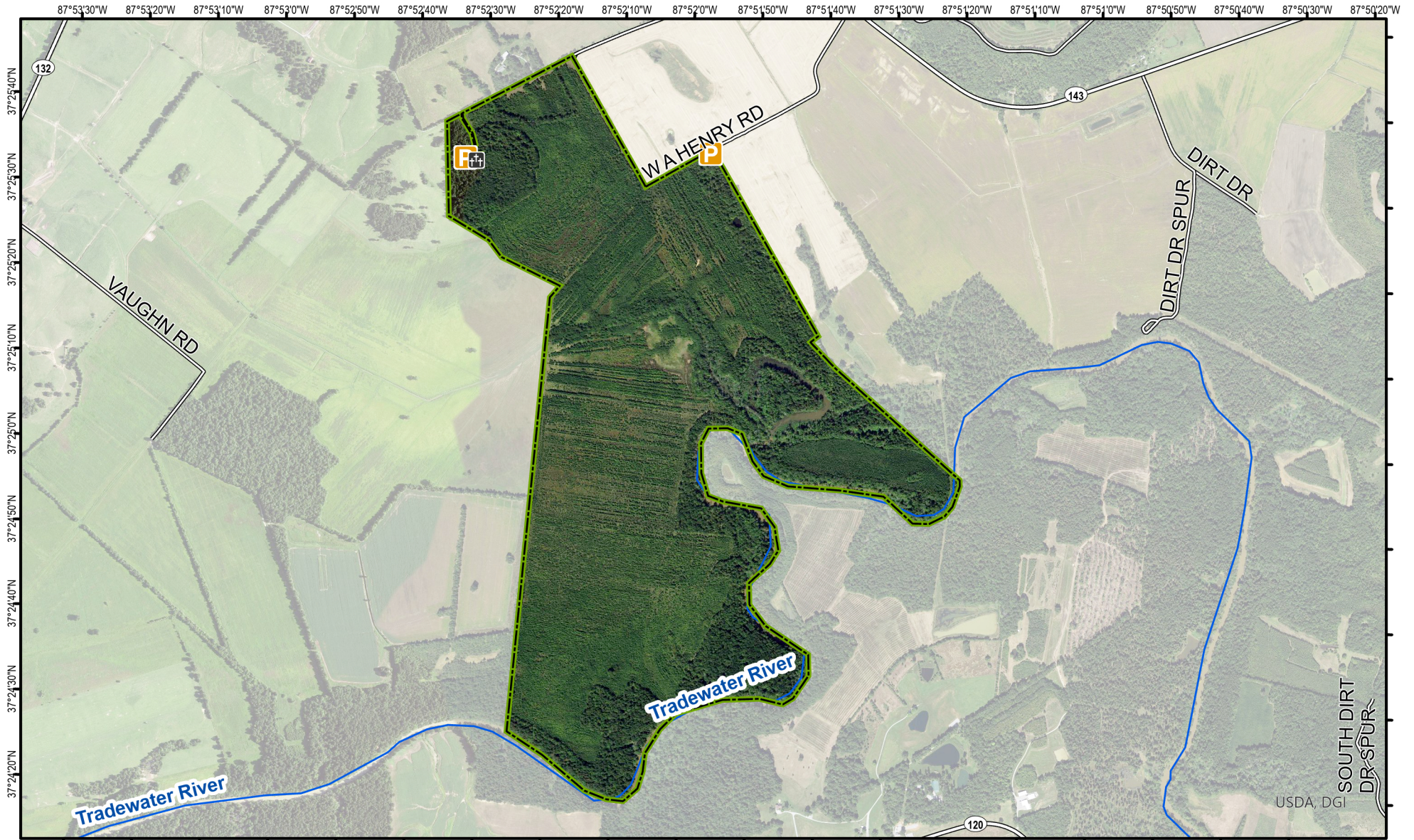


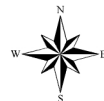
Blackford Oaks WMA



*Shading indicates topography

A map legend and additional information are provided on PDF pages that accompany this map.

Publication Date: 1/8/2024
Imagery from Farm Service Agency 2018



0 0.25 0.5 0.75 1 Mile

Scale 1:19,429

Note to Map Users

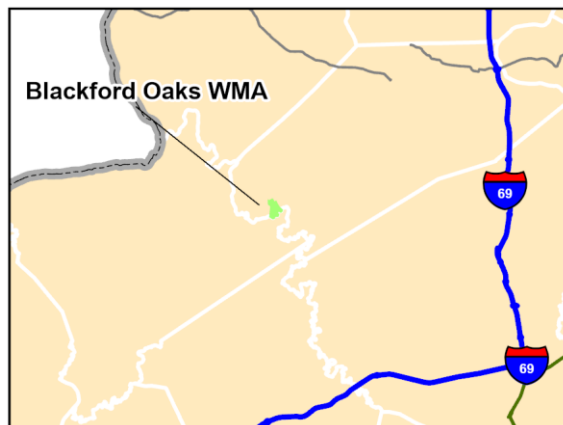
Map prepared by Kentucky Department of Fish & Wildlife Resources (KDFWR). Although KDFWR strives for accuracy, data used to create this map are from a variety of sources and dates; as such, KDFWR makes no representations regarding the accuracy or fitness for use of the information furnished herein.

Blackford Oaks WMA Information

Public Hunting Area Location



Regional Locator



Directions & Description:

From Providence, Kentucky, take KY-109 North/West to KY-143. Turn left onto KY-143 and travel 2.8 miles to W.A. Henry Road. Turn left onto W.A. Henry Road and travel 0.5 miles to the WMA. Parking Area will be located on your left along with a second parking area located off of Jack Brantley Lane.

Primarily forested with 2.3 miles of Tradewater River frontage. A portion of the WMA is subject to annual flooding from the Tradewater River with restricted access. Visit fw.ky.gov for current regulations. Open to Statewide Regulations for all Hunting and Trapping Seasons.

Online Resources

Public Hunting Area users must abide by the Kentucky hunting, trapping, and fishing regulations. It is incumbent on persons using Public Hunting Areas to become familiar with these regulations. Kentucky Department of Fish & Wildlife Resources provides these regulations on our Web site at fw.ky.gov or by calling 1-800-858-1549.

WMA Overview

Location & Size: Webster County, 565 acres

Contact:

Elevation: minimum 350 feet, maximum 425 feet.

Area Habitat: Open land 43%, Forest 17%, Wetland 40%.

Entrance GPS coordinates: Latitude N 37.4263, Longitude W -87.8649

Wildlife Management Area Map Notes & Legend

NOTE TO MAP USERS:

For most WMA maps the landscape is depicted using a combination of elevation contours, hillshading and a green tint indicating woodland areas that is derived from satellite imagery. On WMAs that are relatively small or have a history of surface mining aerial photography is used.

WMA Map Legend

	WMA Office		WMA Boundary		Populated Place
	Information Kiosk		Aerial imagery		Kentucky Boundary
	Check station		Other Public Hunting Areas		Interstate Highway
	Mobility-impaired Hunting Blind		Area Off Limits		Kentucky Parkway
	Trailhead		No Hunting		U.S. Highway
	Horseback Trailhead		Seasonally Restricted Access		State Highway
	Parking Lot		Mobility Impaired Hunting Area		Local Road
	Picnic Area		Primitive Hunting Only		Forest Service Road
	Restrooms		Open Water		Active Railroad
	Wildlife Viewing Site		Wetland		Abandoned Railroad
	Interpretive Site		Woodland		Federal Recreation Trail
	Retriever Training Site				WMA Road
	Gate				WMA Foot Trail
	Campground				WMA Horse Trail
	Cemetery				Gas Pipeline
	Corps of Engineers Office				Powerline
	Waterfowl Blind				Rivers and Streams
	Any Boat				Dam
	Bank Access				Trout Waters
	Carrydown Only				Elevation Contour
	Fishing Pier				
	Small Boat Only				
	Shooting Range				
	State Park Office				