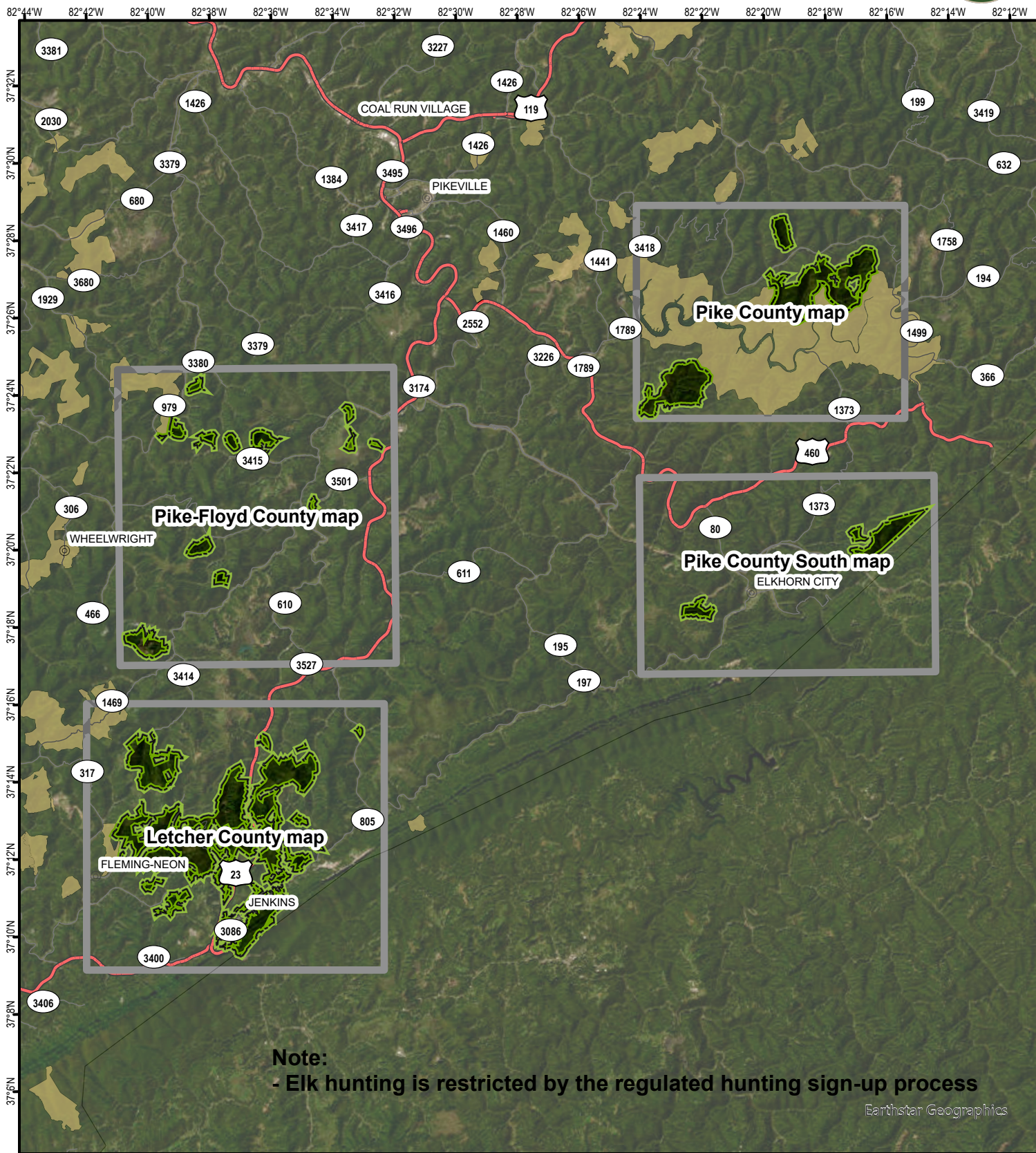


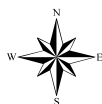
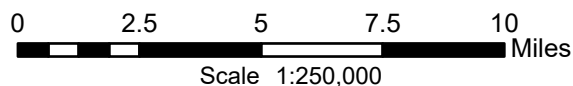


Continental Hunting Access Area - Index Map



A map legend and additional information are provided on PDF pages that accompany this map.

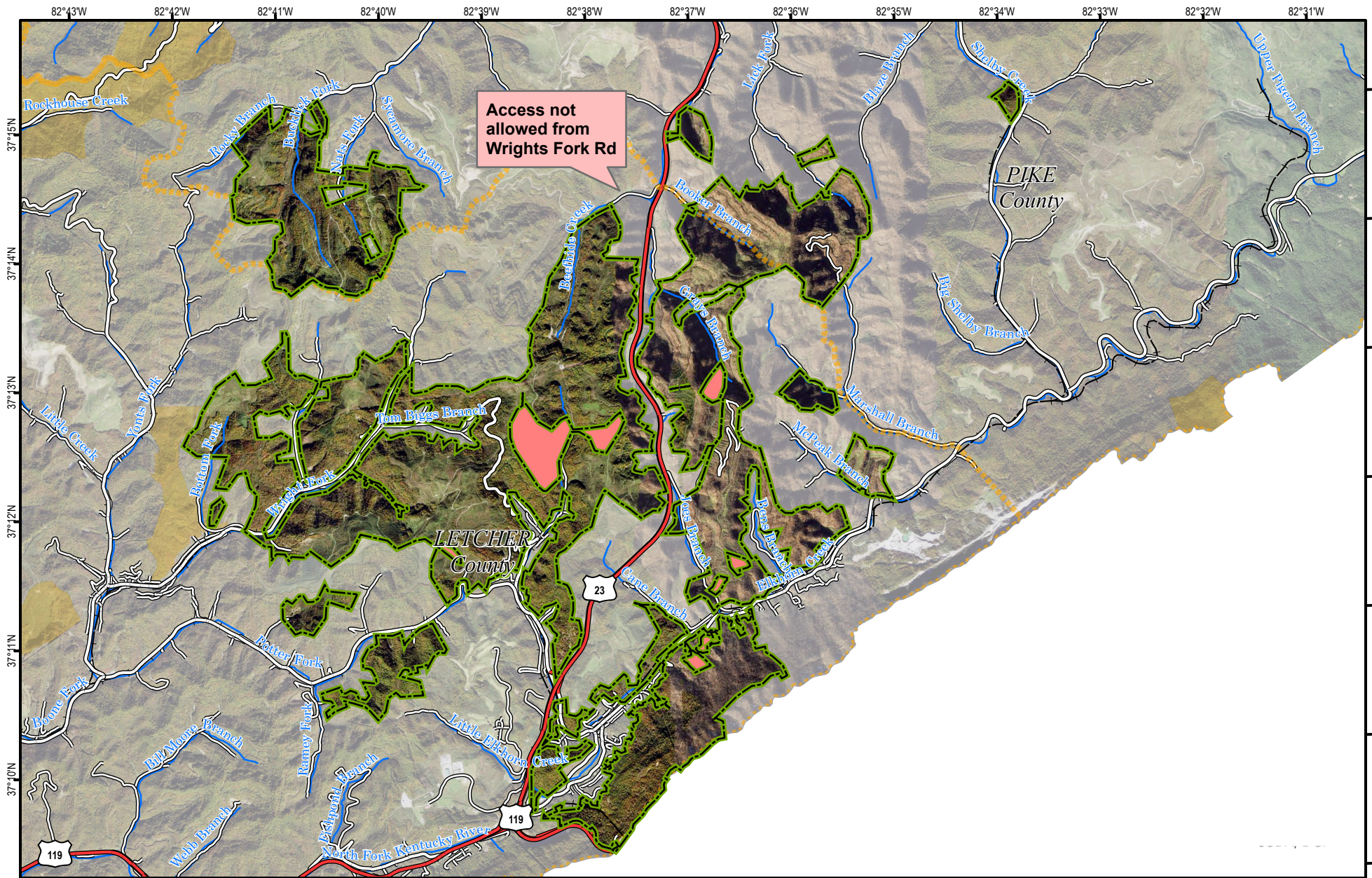
Publication Date: 07/17/2024



Note to Map Users

Map prepared by Kentucky Department of Fish & Wildlife Resources (KDFWR). Although KDFWR strives for accuracy, data used to create this map are from a variety of sources and dates; as such, KDFWR makes no representations regarding the accuracy or fitness for use of the information furnished herein.

Continental Hunting Access Area - Letcher/Pike Tracts



A map legend and additional information are provided on PDF pages that accompany this map.

Publication Date: 07/17/2024
Imagery from Farm Service Agency 2018

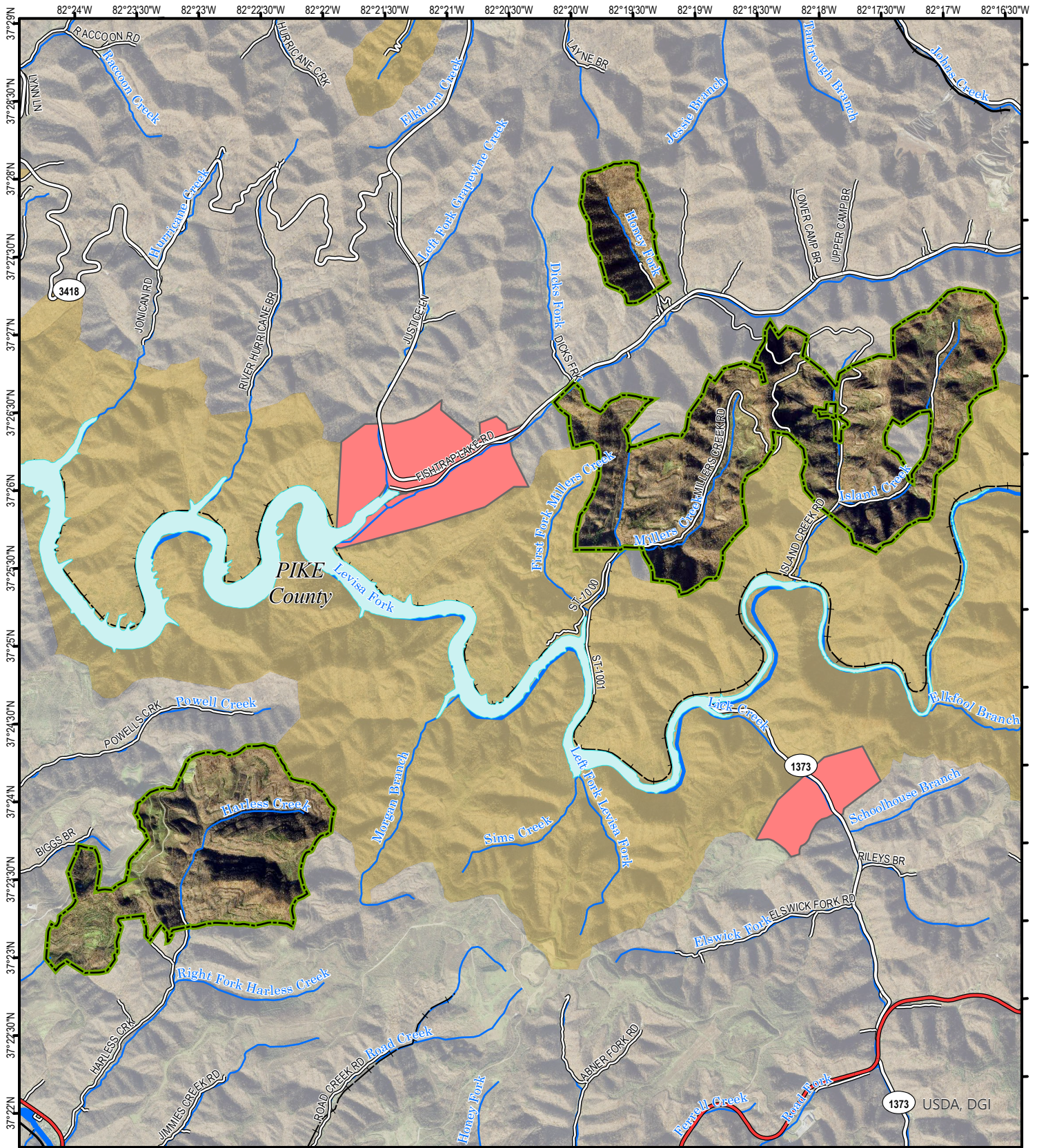
0 0.95 1.9 2.85 3.8 Miles
Scale 1:76,000



Note to Map Users

Map prepared by Kentucky Department of Fish & Wildlife Resources (KDFWR). Although KDFWR strives for accuracy, data used to create this map are from a variety of sources and dates; as such, KDFWR makes no representations regarding the accuracy or fitness for use of the information furnished herein.

Continental Hunting Access Area -Pike Tracts



A map legend and additional information are provided on PDF pages that accompany this map.

Publication Date: 07/17/2024
Imagery from Farm Service Agency 2018

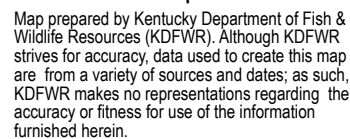


Scale 1:62,000



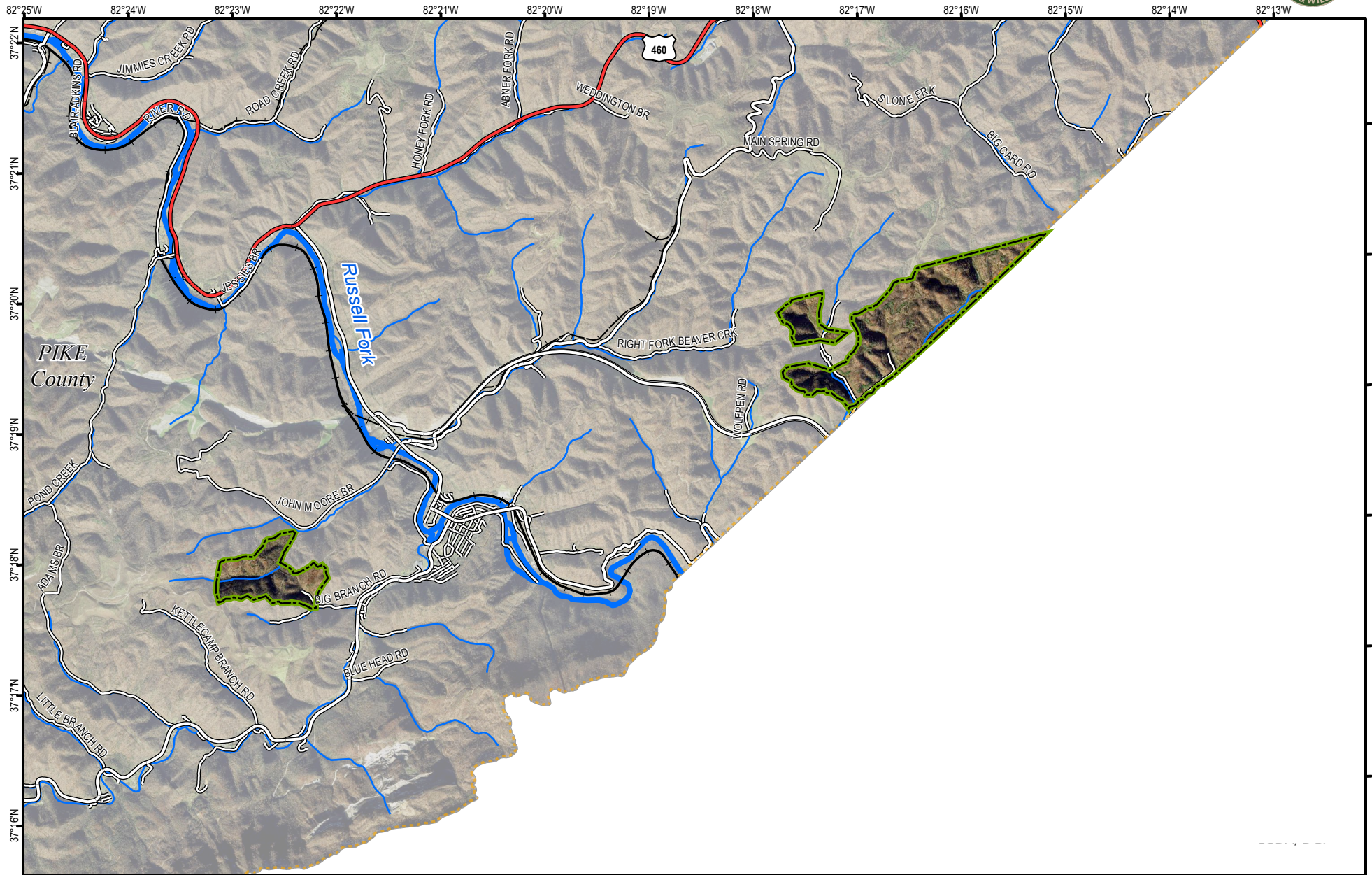
Note to Map Users

Map prepared by Kentucky Department of Fish & Wildlife Resources (KDFWR). Although KDFWR strives for accuracy, data used to create this map are from a variety of sources and dates; as such, KDFWR makes no representations regarding the accuracy or fitness for use of the information furnished herein.





Continental Hunting Access Area - Pike County South

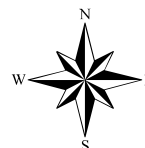


A map legend and additional information are provided on PDF pages that accompany this map.

Publication Date: 07/17/2024
Imagery from Farm Service Agency 2018

0 0.95 1.9 2.85 3.8 Miles

Scale 1:75,000



Note to Map Users

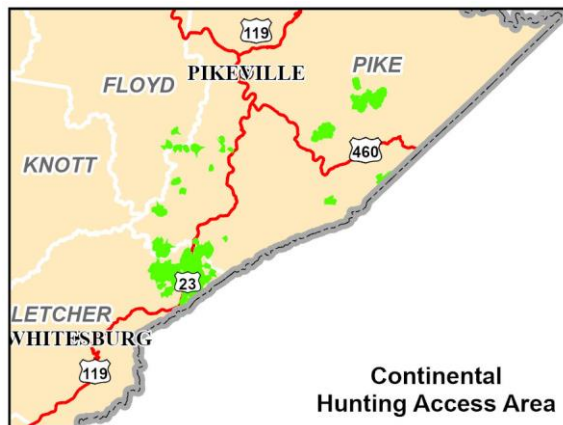
Map prepared by Kentucky Department of Fish & Wildlife Resources (KDFWR). Although KDFWR strives for accuracy, data used to create this map are from a variety of sources and dates; as such, KDFWR makes no representations regarding the accuracy or fitness for use of the information furnished herein.

Continental Hunting Access Area Information

Public Hunting Area Location



Regional Locator



Hunting Access Area Overview

Location & Size: Pike, Letcher, Floyd Counties, 15,038 acres.

Contact: Pike and Floyd Cos. Scott Freidhof . (606)-783-8634, For Letcher Co Wes Hodges (606) 654-2533. Contact Joe McDermott 502-892-4432 for elk hunting questions

Elevation: minimum 800 feet, maximum 3000 feet.

Entrance GPS coordinates: Latitude N 37.20633, Longitude W -82.61236

Area Habitat: Open land 35%, forest 65%, wetland 0%, water 0%

Directions & Description:

Habitat consists primarily of reclaimed surface-mined and forested land. Foot travel only off area mine roads or behind locked gates. Active mining practices are underway on some portions of the property. Use caution when travelling and always give mining equipment and large trucks the right of way.

This property is open under statewide regulations for all game species other than elk. This is a Regulated Area for elk hunting and is located in Elk Hunting Unit 7. Drawn elk hunters may apply to hunt this property during the Elk Hunting Unit and Regulated Area drawing.

Access to the Letcher county property via Wright's Fork Road of US 23 is not permitted

Owned by Continental Land Co., LLC. No ATV's, camping, horseback riding, rock climbing, or hunting with the aid of or over bait is allowed on the area. The use of a hunting guide to assist hunters during their hunt is not permitted on any portions of this property.

Online Resources







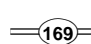








Public Hunting Area users must abide by the Kentucky hunting, trapping, and fishing regulations. It is incumbent on persons using Public Hunting Areas to become familiar with these regulations. Kentucky Department of Fish & Wildlife Resources provides these regulations on our Web site at fw.ky.gov or by calling 1-800-858-1549.

Wildlife Management Area Map Notes & Legend

NOTE TO MAP USERS:

For most WMA maps the landscape is depicted using a combination of elevation contours, hillshading and a green tint indicating woodland areas that is derived from satellite imagery. On WMAs that are relatively small or have a history of surface mining aerial photography is used.

WMA Map Legend

	WMA Office		WMA Boundary		Populated Place
	Information Kiosk		Aerial photograph		Kentucky Boundary
	Check station		Other Public Hunting Areas		Interstate Highway
	Mobility-impaired Hunting Blind		Area Off Limits		Kentucky Parkway
	Trailhead		No Hunting		U.S. Highway
	Horseback Trailhead		Seasonally Restricted Access		State Highway
	Parking Lot		Mobility Impaired Hunting Area		Local Road
	Picnic Area		Primitive Hunting Only		Forest Service Road
	Restrooms		Foot Traffic Only		Active Railroad
	Wildlife Viewing Site		Open Water		Abandoned Railroad
	Interpretive Site		Wetland		Federal Recreation Trail
	Retriever Training Site		Woodland		WMA Road
	Gate				WMA Foot Trail
	Campground				WMA Horse Trail
	Cemetery				Gas Pipeline
	Corps of Engineers Office				Powerline
	Waterfowl Blind				Rivers and Streams
	Shooting Range				Dam
	Established Bank Access				Trout Waters
	Fishing Pier				Elevation Contour
	Carrydown Launch				
	Small Boat Ramp				
	Large Boat Ramp				
	State Park Office				