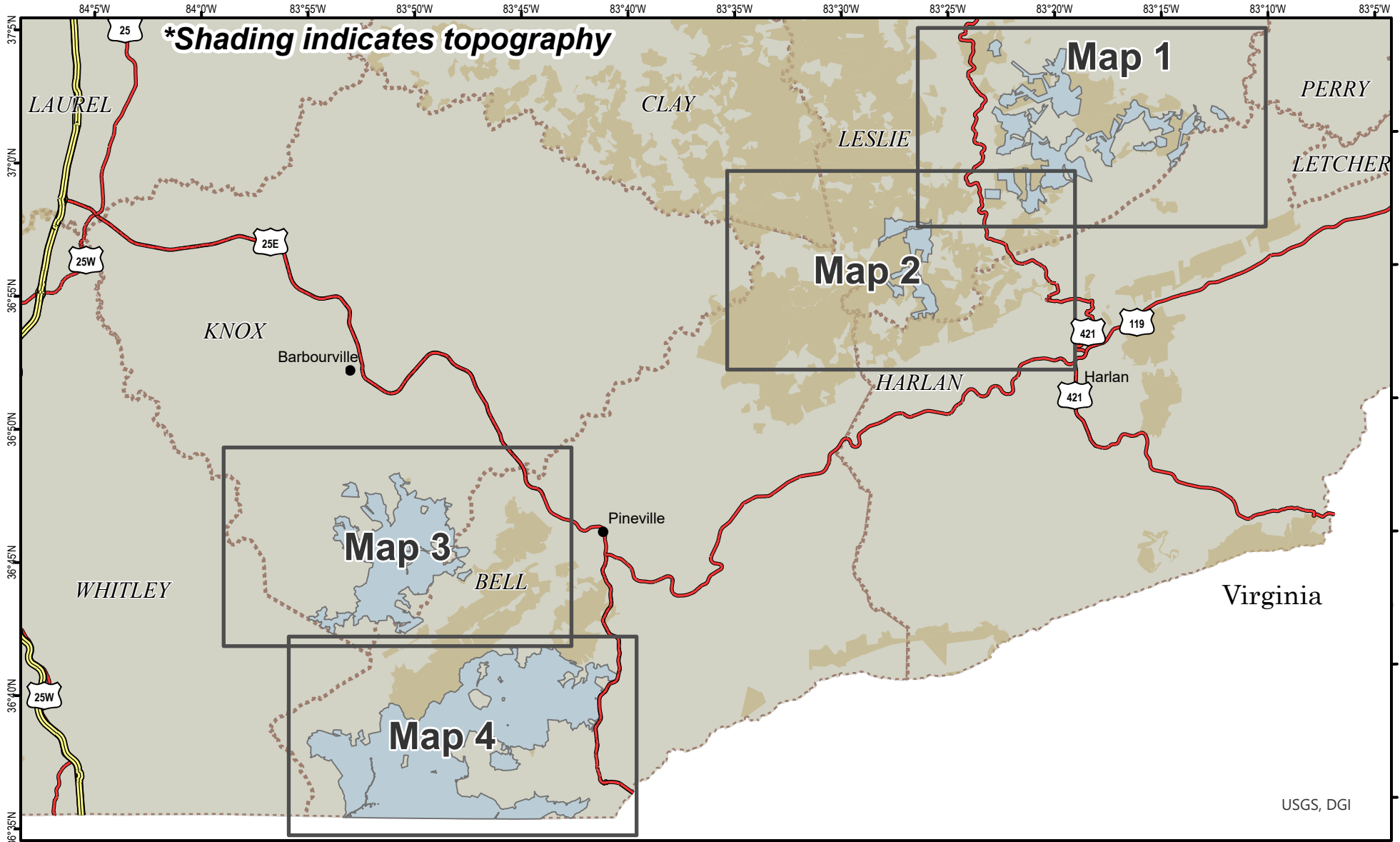


Cumberland Forest WMA Index Map



A map legend and additional information are provided on PDF pages that accompany this map.

Publication Date: 1/5/2024



0 1 2 3 4 5 Mile



Scale 1:375,000

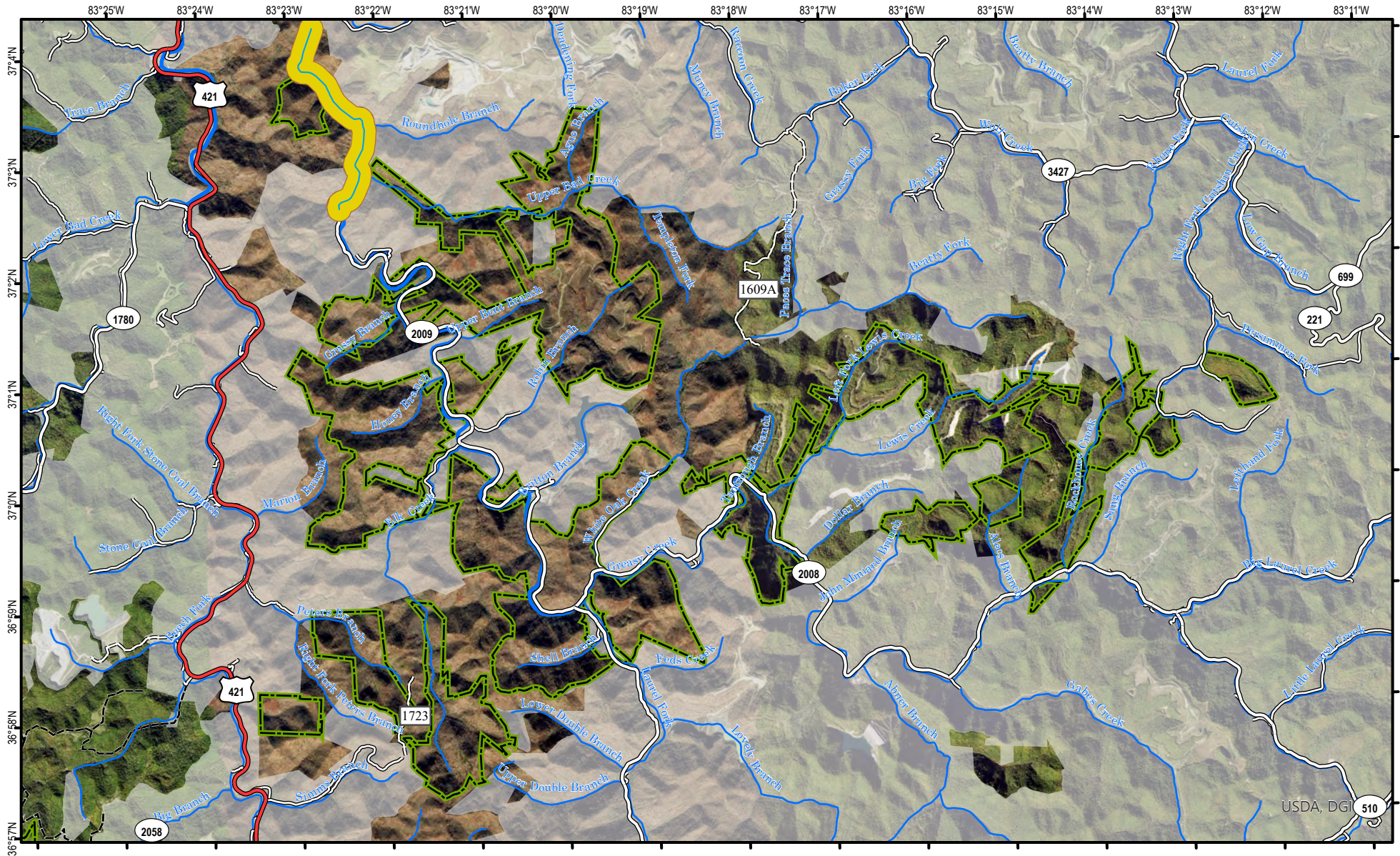
Note to Map Users

Map prepared by Kentucky Department of Fish & Wildlife Resources (KDFWR). Although KDFWR strives for accuracy, data used to create this map are from a variety of sources and dates; as such, KDFWR makes no representations regarding the accuracy or fitness for use of the information furnished herein.



USGS, DGI

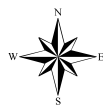
Cumberland Forest WMA Map 1 (Formerly Corrigan WMA)



A map legend and additional information are provided on PDF pages that accompany this map.

Publication Date: 1/5/2024
Imagery from Farm Service Agency 2018

See Adjoining Map 2



0 0.5 1 1.5 2 Mile

Scale 1:90,000

Note to Map Users

Map prepared by Kentucky Department of Fish & Wildlife Resources (KDFWR). Although KDFWR strives for accuracy, data used to create this map are from a variety of sources and dates; as such, KDFWR makes no representations regarding the accuracy or fitness for use of the information furnished herein.

Cumberland Forest WMA Map 2 (Formerly Corrigan WMA)

See Adjoining Map 1



A map legend and additional information are provided on PDF pages that accompany this map.

Publication Date: 1/5/2024
Imagery from Farm Service Agency 2018



0 0.5 1 1.5 2 Mile

Scale 1:90,000



See Adjoining Map 3

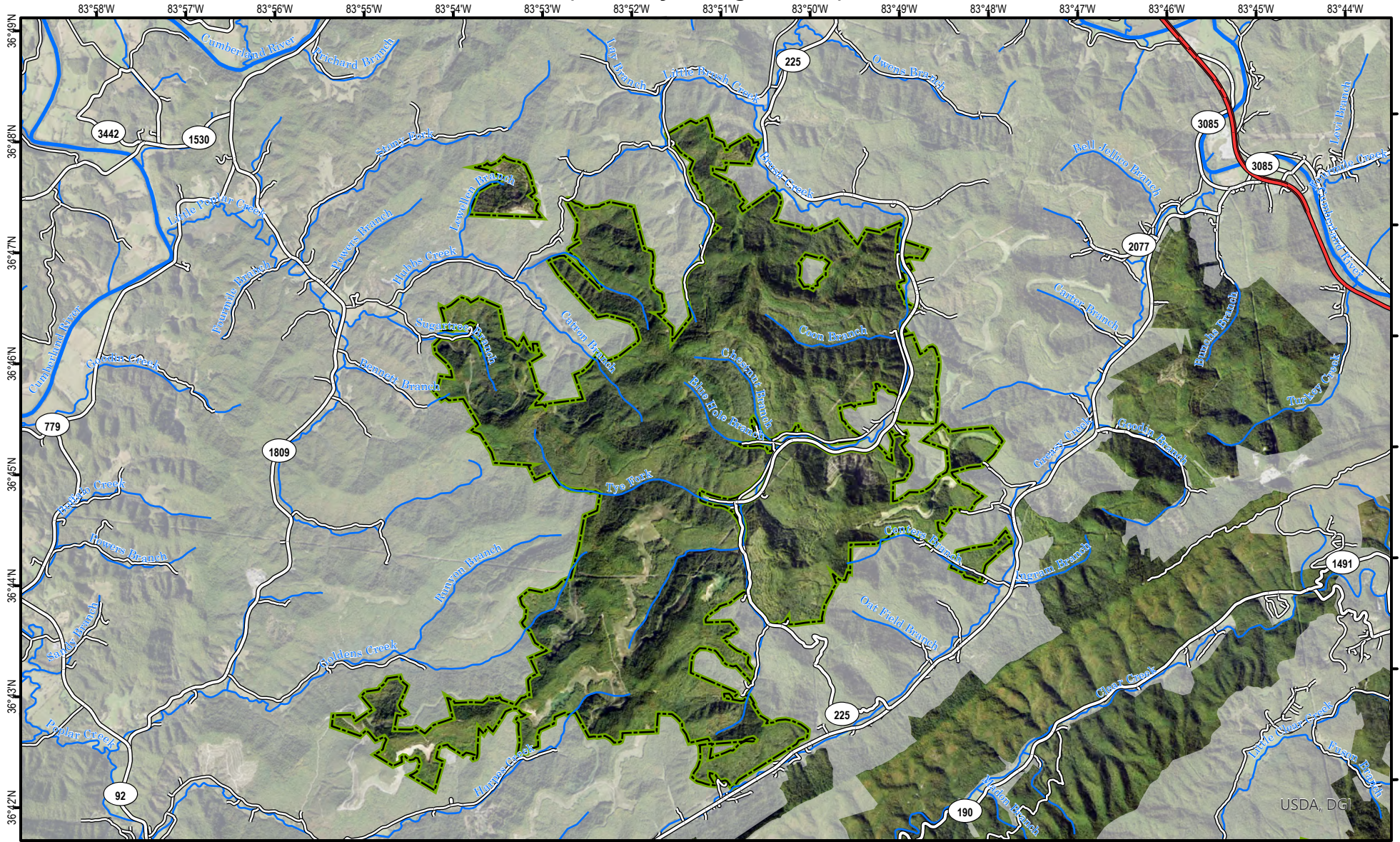
Note to Map Users

Map prepared by Kentucky Department of Fish & Wildlife Resources (KDFWR). Although KDFWR strives for accuracy, data used to create this map are from a variety of sources and dates; as such, KDFWR makes no representations regarding the accuracy or fitness for use of the information furnished herein.

Cumberland Forest WMA Map 3

(Formerly Corrigan WMA)

See Adjoining Map 2



A map legend and additional information are provided on PDF pages that accompany this map.

Publication Date: 1/5/2024
Imagery from Farm Service Agency 2018



0 0.5 1 1.5 2 Mile

Scale 1:90,000



See Adjoining Map 4

Note to Map Users

Map prepared by Kentucky Department of Fish & Wildlife Resources (KDFWR). Although KDFWR strives for accuracy, data used to create this map are from a variety of sources and dates; as such, KDFWR makes no representations regarding the accuracy or fitness for use of the information furnished herein.

Cumberland Forest WMA Map 4 (Formerly Corrigan WMA)

See Adjoining Map 3



USDA, DGI

A map legend and additional information are provided on PDF pages that accompany this map.

Publication Date: 1/5/2024
Imagery from Farm Service Agency 2018



0 0.5 1 1.5 2 Mile

Scale 1:90,000



Note to Map Users

Map prepared by Kentucky Department of Fish & Wildlife Resources (KDFWR). Although KDFWR strives for accuracy, data used to create this map are from a variety of sources and dates; as such, KDFWR makes no representations regarding the accuracy or fitness for use of the information furnished herein.

C. F. Ataya WMA Information

Public Hunting Area Location



Regional Locator



Directions & Description:

This area was formerly called Corrigan WMA. C. F. Ataya consists of several tracts in different counties. One of the larger tracts is west of Middlesboro and is crossed by Highway 74.

The area consists of reclaimed surface-mined and forested land located in several disjointed tracts in Bell, Knox and Leslie Counties. Active surface mine sites, deep mines and other mining-related facilities are off limits to the public. Good to moderate populations of squirrel, rabbits, grouse, deer, turkey and songbirds exist on the area.

The area is open under statewide regulations for small game, turkey, and deer seasons. This property is located in Elk Hunting Units 2 and 3. The Bell County section of the property located within unit 2 is managed as a Regulated Area. Drawn elk hunters may apply to hunt this property during the Elk Hunting Unit and Regulated Area drawing. Please refer to the elk portion of our website.

C. F. Ataya WMA is owned by the C. F. Ataya LLC,. The property is managed by The Nature Conservancy and the Kentucky Department of Fish and Wildlife Resources.

Online Resources

Public Hunting Area users must abide by the Kentucky hunting, trapping, and fishing regulations. It is incumbent on persons using Public Hunting Areas to become familiar with these regulations. Kentucky Department of Fish & Wildlife Resources provides these regulations on our Web site at fw.ky.gov or by calling 1-800-858-1549.

WMA Overview

Location & Size: Bell, Knox & Leslie counties, 54,556 acres.

Contact: Wes Hodges, (606)-654-2533

Elevation: minimum 929 feet, maximum 3143 feet.

Entrance GPS coordinate: Latitude N 36.63016, Longitude W -83.8576




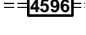

Area Habitat: mostly forest: open land 20%, forest 80%, wetland 0%, open water 0%

Wildlife Management Area Map Notes & Legend

NOTE TO MAP USERS:

For most WMA maps the landscape is depicted using a combination of elevation contours, hillshading and a green tint indicating woodland areas that is derived from satellite imagery. On WMAs that are relatively small or have a history of surface mining aerial photography is used.

WMA Map Legend

	WMA Office		WMA Boundary		Populated Place
	Information Kiosk		Aerial photograph		Kentucky Boundary
	Check station		Other Public Hunting Areas		Interstate Highway
	Mobility-impaired Hunting Blind		Area Off Limits		Kentucky Parkway
	Trailhead		No Hunting		U.S. Highway
	Horseback Trailhead		Seasonally Restricted Access		State Highway
	Parking Lot		Mobility Impaired Hunting Area		Local Road
	Picnic Area		Primitive Hunting Only		Forest Service Road
	Restrooms		Foot Traffic Only		Active Railroad
	Wildlife Viewing Site		Open Water		Abandoned Railroad
	Interpretive Site		Wetland		Federal Recreation Trail
	Retriever Training Site		Woodland		WMA Road
	Gate				WMA Foot Trail
	Campground				WMA Horse Trail
	Cemetery				Gas Pipeline
	Corps of Engineers Office				Powerline
	Waterfowl Blind				Rivers and Streams
	Shooting Range				Dam
	Established Bank Access				Trout Waters
	Fishing Pier				Elevation Contour
	Carrydown Launch				
	Small Boat Ramp				
	Large Boat Ramp				
	State Park Office				