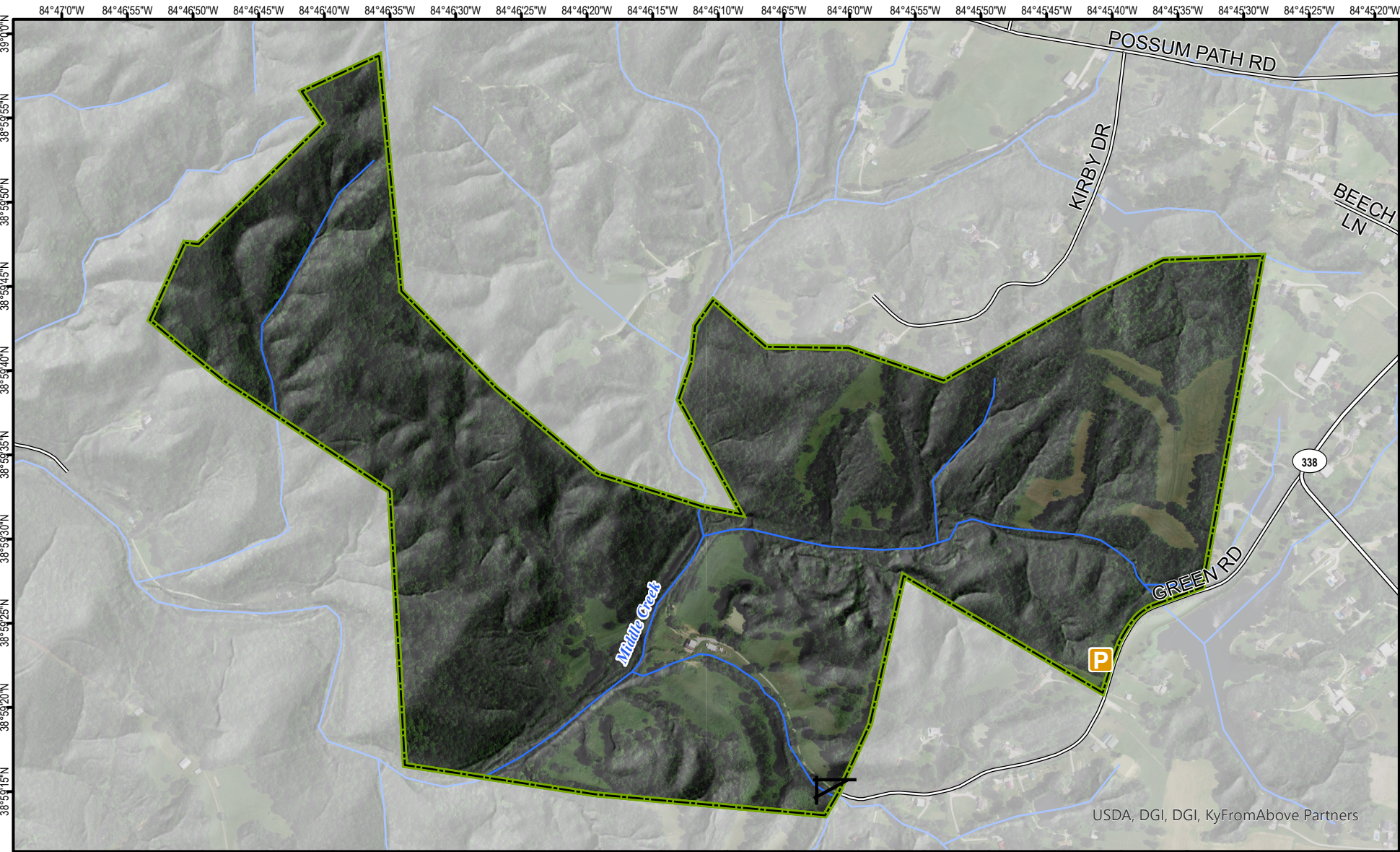


# Decker WMA

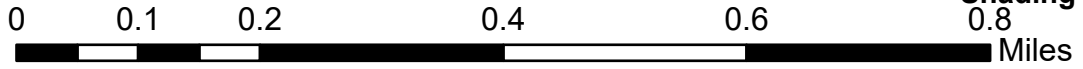


USDA, DGI, DGI, KyFromAbove Partners

**\*Shading indicates topography**

A map legend and additional information are provided on PDF pages that accompany this map.

Publication Date: 9/1/2023  
Imagery from Farm Service Agency 2018



Scale 1:10,000

**Note to Map Users**  
Map prepared by Kentucky Department of Fish & Wildlife Resources (KDFWR). Although KDFWR strives for accuracy, data used to create this map are from a variety of sources and dates; as such, KDFWR makes no representations regarding the accuracy or fitness for use of the information furnished herein.

# Wildlife Management Area Map Notes & Legend

## NOTE TO MAP USERS:

For most WMA maps the landscape is depicted using a combination of elevation contours, hillshading and a green tint indicating woodland areas that is derived from satellite imagery. On WMAs that are relatively small or have a history of surface mining aerial photography is used.

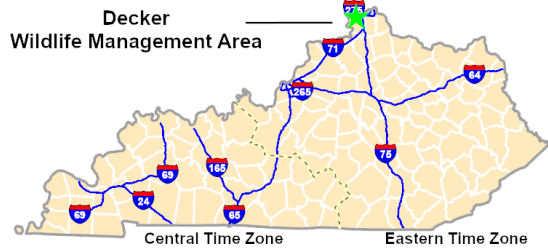
## WMA Map Legend

	WMA Office		WMA Boundary		Populated Place
	Information Kiosk		Aerial imagery		Kentucky Boundary
	Check station		Other Public Hunting Areas		Interstate Highway
	Mobility-impaired Hunting Blind		Area Off Limits		Kentucky Parkway
	Trailhead		No Hunting		U.S. Highway
	Horseback Trailhead		Seasonally Restricted Access		State Highway
	Parking Lot		Mobility Impaired Hunting Area		Local Road
	Picnic Area		Primitive Hunting Only		Forest Service Road
	Restrooms		Open Water		Active Railroad
	Wildlife Viewing Site		Wetland		Abandoned Railroad
	Interpretive Site		Woodland		Federal Recreation Trail
	Retriever Training Site				WMA Road
	Gate				WMA Foot Trail
	Campground				WMA Horse Trail
	Cemetery				Gas Pipeline
	Corps of Engineers Office				Powerline
	Waterfowl Blind				Rivers and Streams
	Any Boat				Dam
	Bank Access				Trout Waters
	Carrydown Only				Elevation Contour
	Fishing Pier				
	Small Boat Only				
	Shooting Range				
	State Park Office				

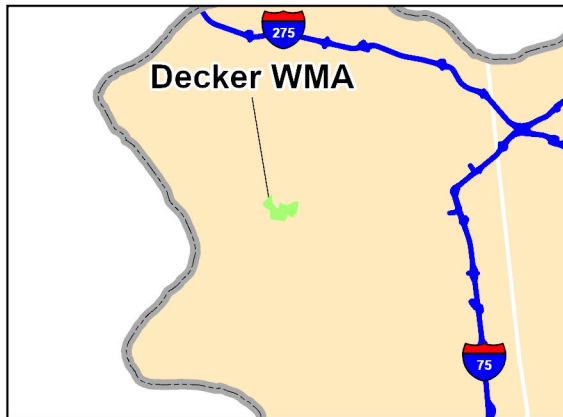


# Decker WMA Information

## Public Hunting Area Location



## Regional Locator



## WMA Overview

**Location & Size:** Boone County, 299 acres

**Contact** (859) 428-2262

**Elevation** Minimum 665 feet, Maximum 908 feet.

**Area Habitat** Mostly Deciduous Forest: Open Land 2%, Deciduous Forest 85%, Mixed Forest 6%, Hay / Pasture 7%.

**Entrance GPS coordinates:** Latitude N 38.9894,  
Longitude W -84.7641

## Directions & Description:

From Burlington Kentucky, take KY-338 South/East Bend Road to Green Road. Turn right onto Green Road. Follow Green Road 0.33 miles. Parking Area will be located on your right.

Primarily forested with a few old fields and Middle Creek intersecting the property. Access within the WMA may be restricted due to stream and/or wetland construction project. Visit [fw.ky.gov](http://fw.ky.gov) for current regulations. Deer hunting open to archery/crossbow only. Firearms hunting for all other species open to use of shotgun only (No Single Projectile Ammunition), No target shooting allowed.

## Online Resources

Public Hunting Area users must abide by the Kentucky hunting, trapping, and fishing regulations. It is incumbent on persons using Public Hunting Areas to become familiar with these regulations. Kentucky Department of Fish & Wildlife Resources provides these regulations on our Web site at [fw.ky.gov](http://fw.ky.gov) or by calling 1-800-858-1549.