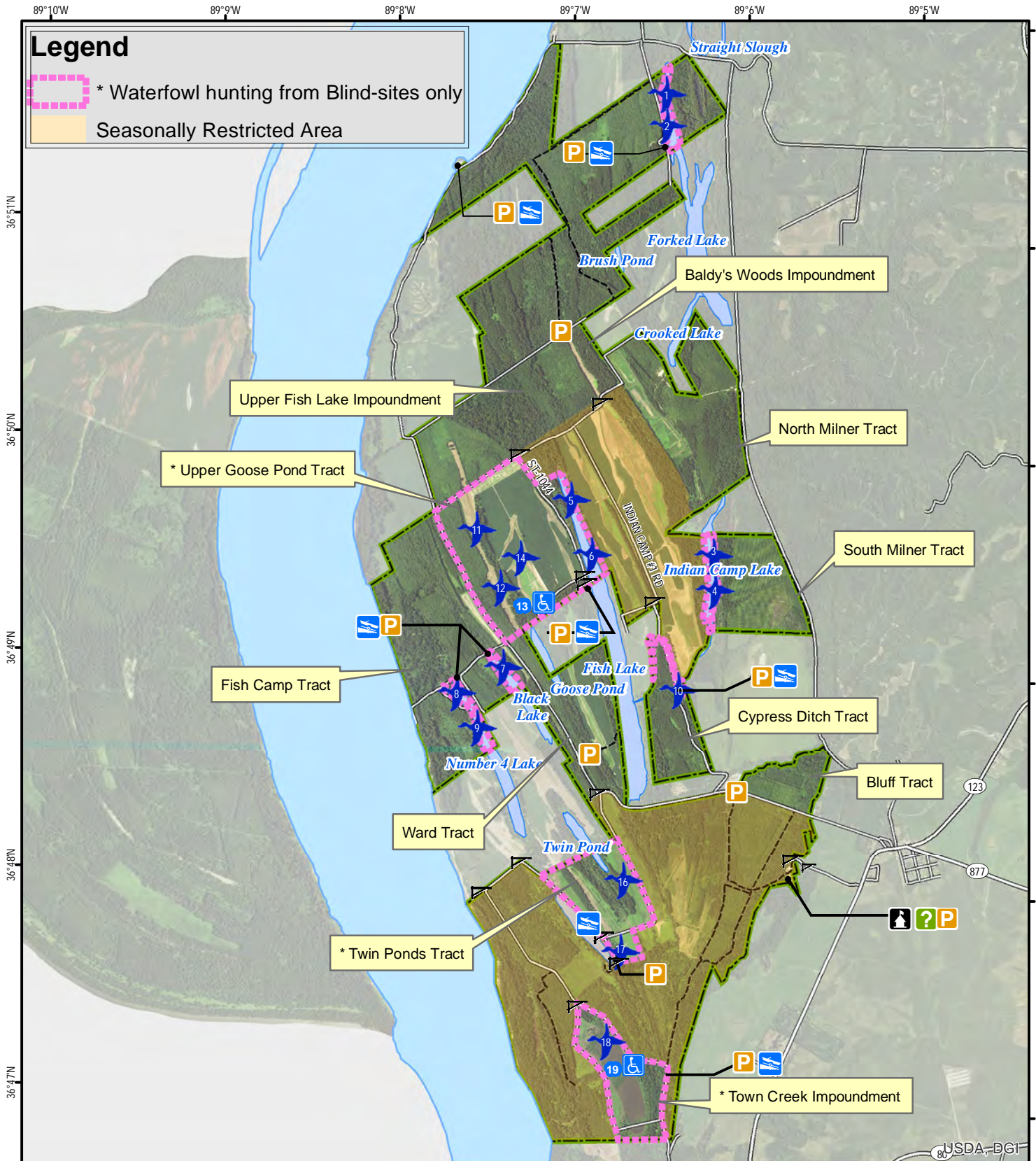


# Doug Travis Wildlife Management Area



A map legend and additional information are provided on PDF pages that accompany this map.

Publication Date: 9/19/2019  
Imagery from Farm Service Agency 2018



0 0.5 1 Mile



## Note to Map Users

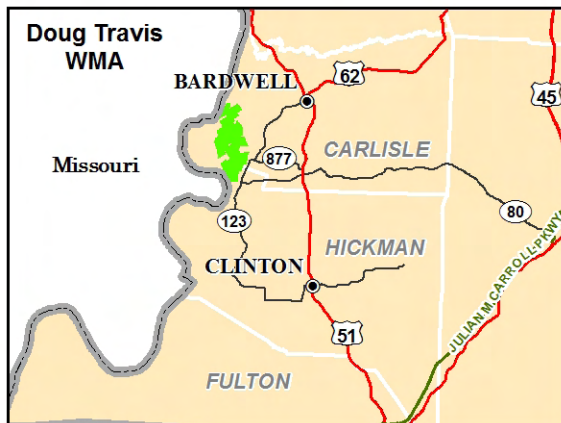
Map prepared by Kentucky Department of Fish & Wildlife Resources (KDFWR). Although KDFWR strives for accuracy, data used to create this map are from a variety of sources and dates; as such, KDFWR makes no representations regarding the accuracy or fitness for use of the information furnished herein.

# Doug Travis WMA Information

## Public Hunting Area Location



## Regional Locator



## WMA Overview

**Location & Size:** Carlisle & Hickman counties, 4,132 acres.

**Contact:** (270) 488-3233

**Elevation:** minimum 280 feet, maximum 456 feet.

**Entrance GPS coordinates:** Latitude N 36.80145, Longitude W -89.09328

**Area Habitat:** mostly forest: open land 28%, forest 37%, wetland 19%, open water 17%.

## Directions & Description:

South of Wickliffe along Mississippi River. From Paducah, take HWY 62 (west) to Bardwell, then pick up HWY 123 to its intersection with HWY 877 at Berkley. Continue south on HWY 123 to the WMA office driveway on the right less than ½ mile from the intersection. From Wickliffe, take HWY 51(south) to Bardwell and pick up HWY 123 to Berkley.

Bottomland hardwood forest, cypress sloughs, moist-soil units and cropland. Several oxbow lakes for fishing from bank or small boats. Great blue heron rookery. Populations of deer, turkey, squirrel, furbearers and waterfowl exist on the area.

Open to statewide hunting regulations, except special regulations apply for waterfowl hunting on portions of the area. Portions of the area are closed to all access Nov. 1-March 15.

Owned by Kentucky Department of Fish and Wildlife Resources.

## Online Resources


Public Hunting Area users must abide by the Kentucky hunting, trapping, and fishing regulations. It is incumbent on persons using Public Hunting Areas to become familiar with these regulations. Kentucky Department of Fish & Wildlife Resources provides these regulations on our Web site at [fw.ky.gov](http://fw.ky.gov) or by calling 1-800-858-1549.

# Wildlife Management Area Map Notes & Legend

## NOTE TO MAP USERS:

For most WMA maps the landscape is depicted using a combination of elevation contours, hillshading and a green tint indicating woodland areas that is derived from satellite imagery. On WMAs that are relatively small or have a history of surface mining aerial photography is used.

## WMA Map Legend

	WMA Office		WMA Boundary		Populated Place
	Information Kiosk		Aerial photograph		Kentucky Boundary
	Check station		Other Public Hunting Areas		Interstate Highway
	Mobility-impaired Hunting Blind		Area Off Limits		Kentucky Parkway
	Trailhead		No Hunting		U.S. Highway
	Horseback Trailhead		Seasonally Restricted Access		State Highway
	Parking Lot		Mobility Impaired Hunting Area		Local Road
	Picnic Area		Primitive Hunting Only		Forest Service Road
	Restrooms		Foot Traffic Only		Active Railroad
	Wildlife Viewing Site		Open Water		Abandoned Railroad
	Interpretive Site		Wetland		Federal Recreation Trail
	Retriever Training Site		Woodland		WMA Road
	Gate				WMA Foot Trail
	Campground				WMA Horse Trail
	Cemetery				Gas Pipeline
	Corps of Engineers Office				Powerline
	Waterfowl Blind				Rivers and Streams
	Shooting Range				Dam
	Established Bank Access				Trout Waters
	Fishing Pier				Elevation Contour
	Carrydown Launch				
	Small Boat Ramp				
	Large Boat Ramp				
	State Park Office				