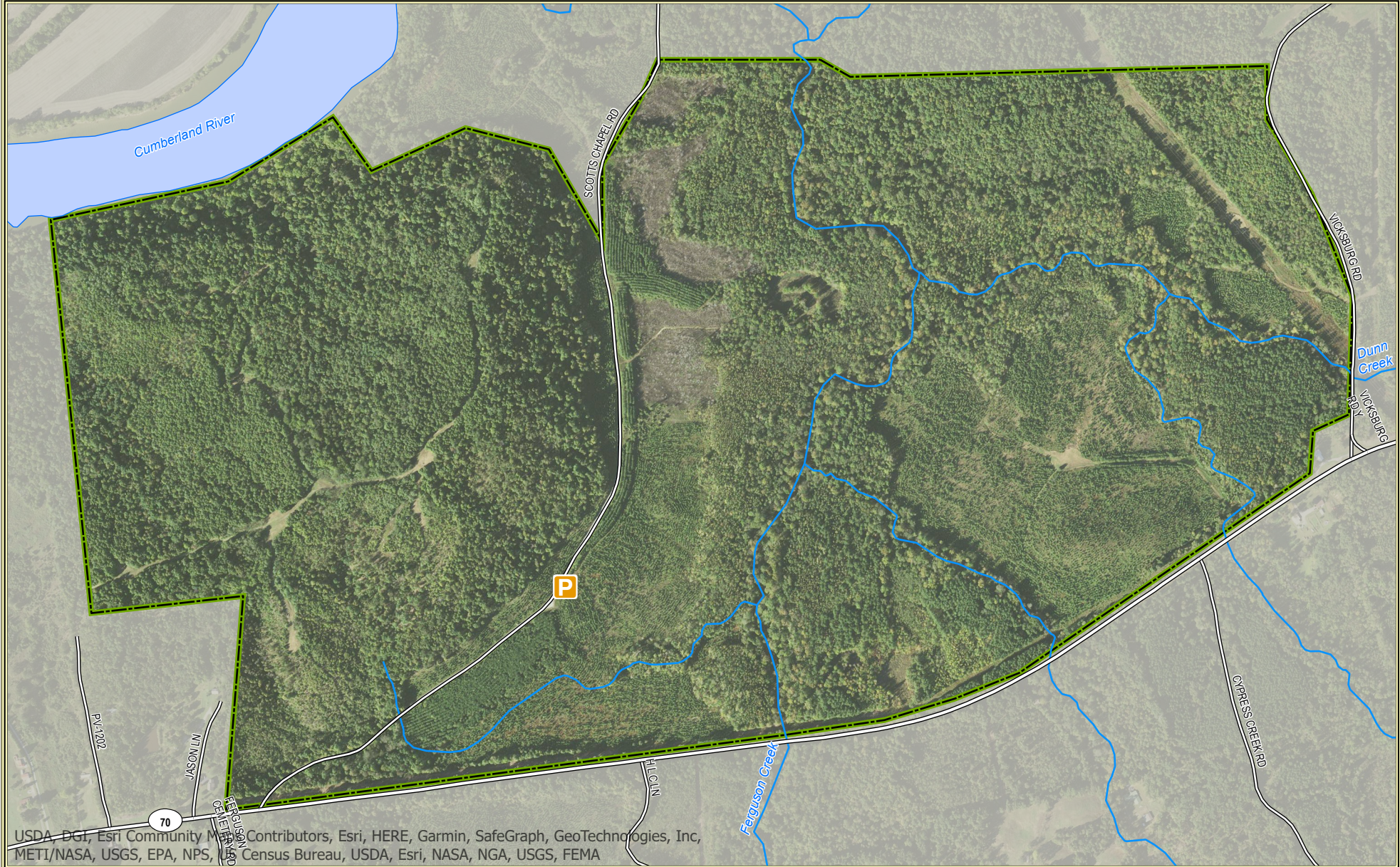
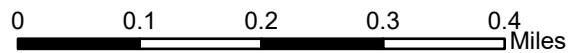


Ferguson Creek WMA



USDA, DGI, Esri Community Map Contributors, Esri, HERE, Garmin, SafeGraph, GeoTechnologies, Inc, METI/NASA, USGS, EPA, NPS, Census Bureau, USDA, Esri, NASA, NGA, USGS, FEMA



Scale: 1:10,000

3/28/2023 1:55 PM

Wildlife Management Area Map Notes & Legend

NOTE TO MAP USERS:

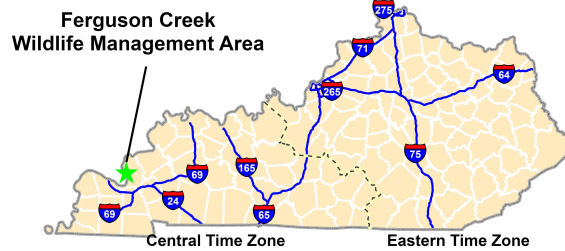
For most WMA maps the landscape is depicted using a combination of elevation contours, hillshading and a green tint indicating woodland areas that is derived from satellite imagery. On WMAs that are relatively small or have a history of surface mining aerial photography is used.

WMA Map Legend

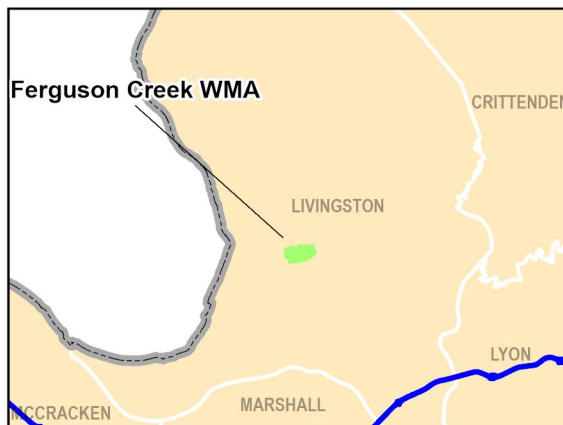
	WMA Office		WMA Boundary		Populated Place
	Information Kiosk		Aerial imagery		Kentucky Boundary
	Check station		Other Public Hunting Areas		Interstate Highway
	Mobility-impaired Hunting Blind		Area Off Limits		Kentucky Parkway
	Trailhead		No Hunting		U.S. Highway
	Horseback Trailhead		Seasonally Restricted Access		State Highway
	Parking Lot		Mobility Impaired Hunting Area		Local Road
	Picnic Area		Primitive Hunting Only		Forest Service Road
	Restrooms		Open Water		Active Railroad
	Wildlife Viewing Site		Wetland		Abandoned Railroad
	Interpretive Site		Woodland		Federal Recreation Trail
	Retriever Training Site				WMA Road
	Gate				WMA Foot Trail
	Campground				WMA Horse Trail
	Cemetery				Gas Pipeline
	Corps of Engineers Office				Powerline
	Waterfowl Blind				Rivers and Streams
	Any Boat				Dam
	Bank Access				Trout Waters
	Carrydown Only				Elevation Contour
	Fishing Pier				
	Small Boat Only				
	Shooting Range				
	State Park Office				

Ferguson Creek Wildlife Management Area Information

Public Hunting Area Location



Regional Locator



Directions & Description:

Driving Directions: From Smithland, KY- take State Highway 70 east, 1.8 miles to Scotts Chapel Rd.; WMA property will be on both sides of the road. Additional access can be found 1.3 miles East of Scotts Chapel road, down HWY 70.

Description: the property consists of rolling hills above the banks of the Cumberland river, with a scattering of low lying wetlands within the interior of the property.

Area is open to hunting for statewide regulations and rules and regulations in effect for the county.

Online Resources

Public Hunting Area users must abide by the Kentucky hunting, trapping, and fishing regulations. It is incumbent on persons using Public Hunting Areas to become familiar with these regulations. Kentucky Department of Fish & Wildlife Resources provides these regulations on our Web site at fw.ky.gov or by calling 1-800-858-1549.

WMA Overview

Location & Size: Livingston County, 614 acres.

Contact: (270)753-6913

Elevation: Minimum 302 feet, Maximum 553 feet.

Entrance GPS coordinates: Latitude N 36.89671, Longitude W -83.57717

Area Habitat: Open Land 6%, Forest 80%, Wetland 14%, Water 0%