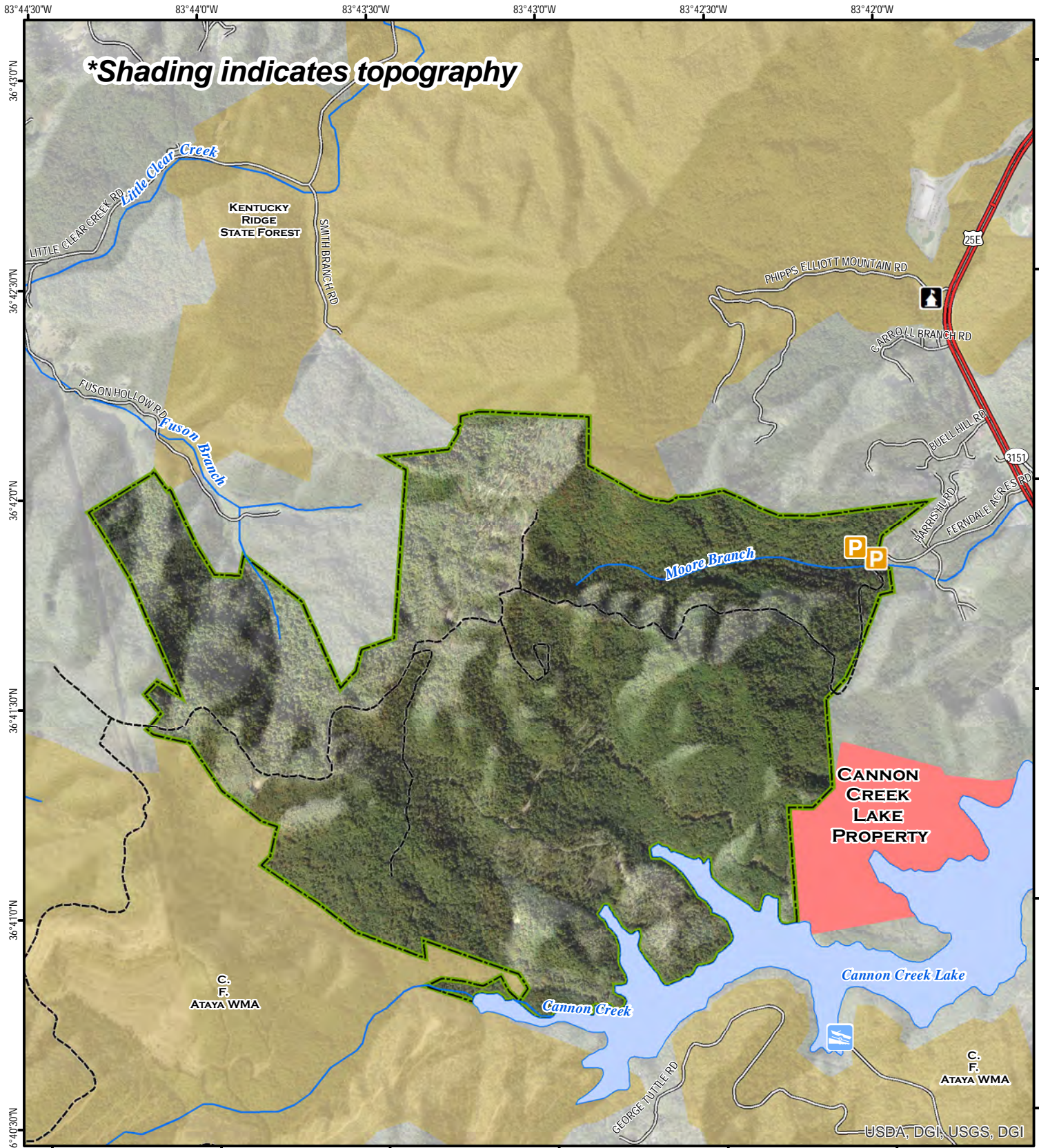
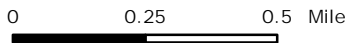
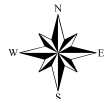


Fortner-Davis Wildlife Management Area



A map legend and additional information are provided on PDF pages that accompany this map.



Scale 1:23,000

Publication Date: 3/27/2020
Imagery from Farm Service Agency 2018



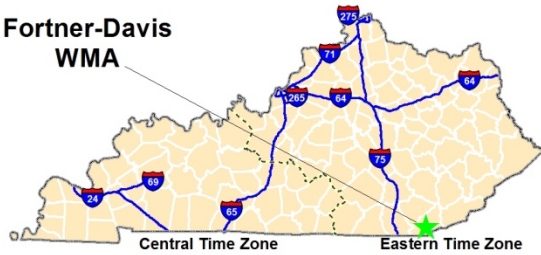
Note to Map Users

Map prepared by Kentucky Department of Fish & Wildlife Resources (KDFWR). Although KDFWR strives for accuracy, data used to create this map are from a variety of sources and dates; as such, KDFWR makes no representations regarding the accuracy or fitness for use of the information furnished herein.

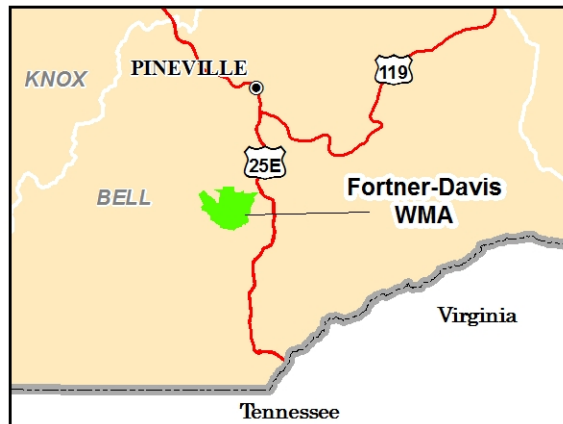
Fortner-Davis WMA Information

Public Hunting Area Location

Fortner-Davis
WMA



Regional Locator



Directions & Description:

From Pineville, KY in Bell County take US 25E south approximately 4.5 miles to CR-1149 (Ferndale Acres RD) and turn right (west). WMA entrance approximately ½ mile from US 25E.

From Middlesboro, take 25E north to CR-1149 (Ferndale Acres RD) and turn left toward WMA entrance. Access to Cannon Creek Lake from 25E, turn onto Rice RD.

Area consists of forestland and reclaimed mined land with steep to rugged topography. Good to moderate populations of squirrel, rabbits, grouse, deer, turkey and songbirds exist on the area.

Fortner-Davis WMA is privately owned.

Online Resources

Public Hunting Area users must abide by the Kentucky hunting, trapping, and fishing regulations. It is incumbent on persons using Public Hunting Areas to become familiar with these regulations. Kentucky Department of Fish & Wildlife Resources provides these regulations on our Web site at fw.ky.gov or by calling 1-800-858-1549.

WMA Overview

Location & Size: Bell County, 1,358 acres.

Contact: (606) 654-2533

Elevation: minimum 1280 feet, maximum 2400 feet.

Entrance GPS coordinates: Latitude N 36.69696, Longitude W -83.7004

Area Habitat: mostly forest: open land 5%, forest 94%, wetland 0%, open water 1%.

Wildlife Management Area Map Notes & Legend

NOTE TO MAP USERS:

For most WMA maps the landscape is depicted using a combination of elevation contours, hillshading and a green tint indicating woodland areas that is derived from satellite imagery. On WMAs that are relatively small or have a history of surface mining aerial photography is used.

WMA Map Legend

	WMA Office		WMA Boundary		Populated Place
	Information Kiosk		Aerial photograph		Kentucky Boundary
	Check station		Other Public Hunting Areas		Interstate Highway
	Mobility-impaired Hunting Blind		Area Off Limits		Kentucky Parkway
	Trailhead		No Hunting		U.S. Highway
	Horseback Trailhead		Seasonally Restricted Access		State Highway
	Parking Lot		Mobility Impaired Hunting Area		Local Road
	Picnic Area		Primitive Hunting Only		Forest Service Road
	Restrooms		Foot Traffic Only		Active Railroad
	Wildlife Viewing Site		Open Water		Abandoned Railroad
	Interpretive Site		Wetland		Federal Recreation Trail
	Retriever Training Site		Woodland		WMA Road
	Gate				WMA Foot Trail
	Campground				WMA Horse Trail
	Cemetery				Gas Pipeline
	Corps of Engineers Office				Powerline
	Waterfowl Blind				Rivers and Streams
	Shooting Range				Dam
	Established Bank Access				Trout Waters
	Fishing Pier				Elevation Contour
	Carrydown Launch				
	Small Boat Ramp				
	Large Boat Ramp				
	State Park Office				