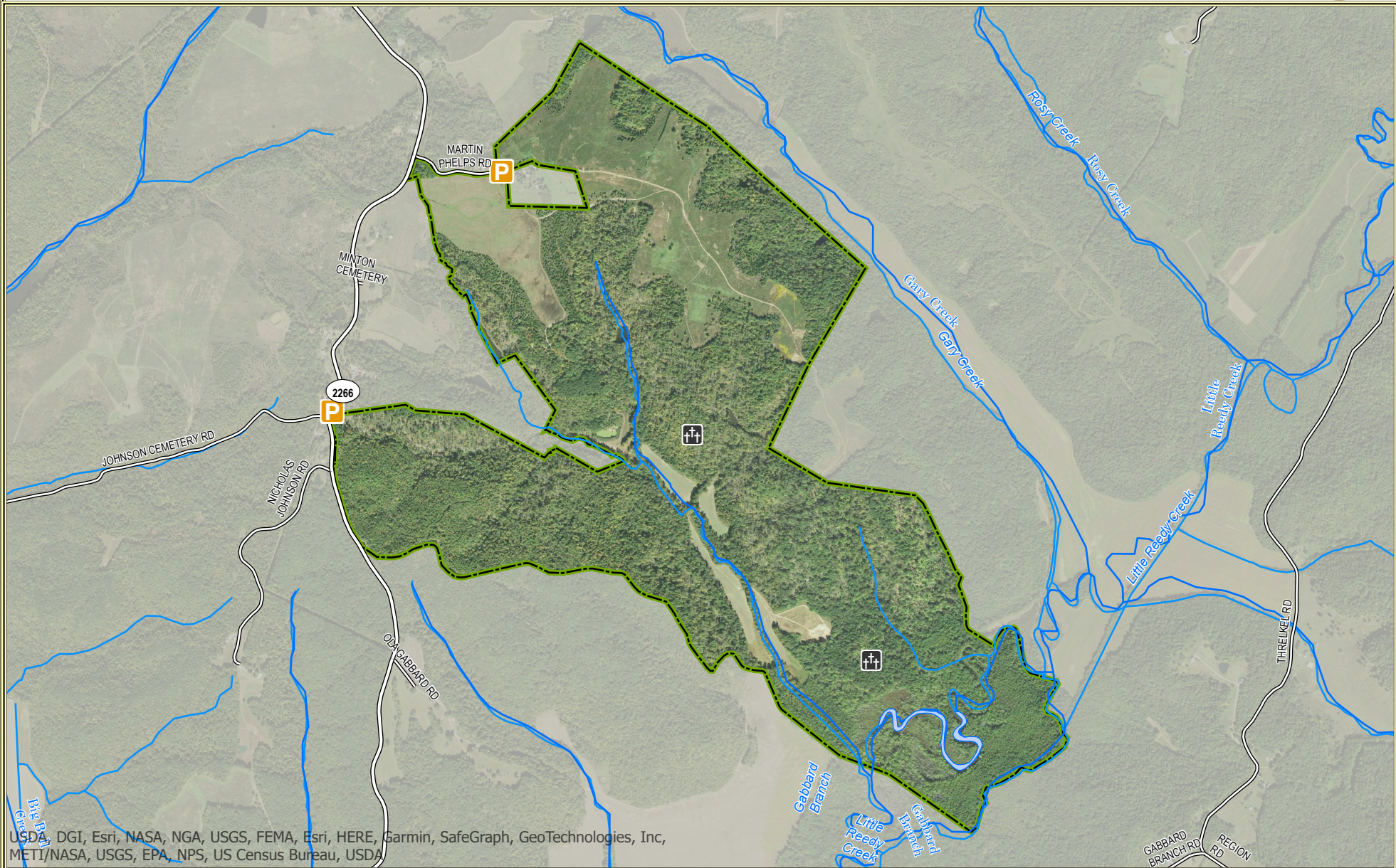
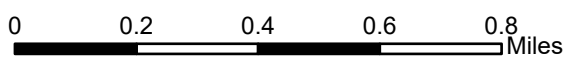


Gabbard Branch WMA



USDA, DGI, Esri, NASA, NGA, USGS, FEMA, Esri, HERE, Garmin, SafeGraph, GeoTechnologies, Inc, METI/NASA, USGS, EPA, NPS, US Census Bureau, USDA



1:20,000

3/28/2023 1:55 PM

Wildlife Management Area Map Notes & Legend

NOTE TO MAP USERS:

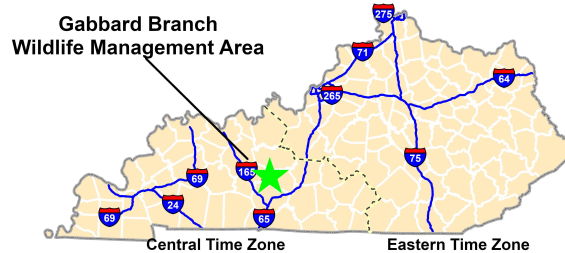
For most WMA maps the landscape is depicted using a combination of elevation contours, hillshading and a green tint indicating woodland areas that is derived from satellite imagery. On WMAs that are relatively small or have a history of surface mining aerial photography is used.

WMA Map Legend

	WMA Office		WMA Boundary		Populated Place
	Information Kiosk		Aerial imagery		Kentucky Boundary
	Check station		Other Public Hunting Areas		Interstate Highway
	Mobility-impaired Hunting Blind		Area Off Limits		Kentucky Parkway
	Trailhead		No Hunting		U.S. Highway
	Horseback Trailhead		Seasonally Restricted Access		State Highway
	Parking Lot		Mobility Impaired Hunting Area		Local Road
	Picnic Area		Primitive Hunting Only		Forest Service Road
	Restrooms		Open Water		Active Railroad
	Wildlife Viewing Site		Wetland		Abandoned Railroad
	Interpretive Site		Woodland		Federal Recreation Trail
	Retriever Training Site				WMA Road
	Gate				WMA Foot Trail
	Campground				WMA Horse Trail
	Cemetery				Gas Pipeline
	Corps of Engineers Office				Powerline
	Waterfowl Blind				Rivers and Streams
	Any Boat				Dam
	Bank Access				Trout Waters
	Carrydown Only				Elevation Contour
	Fishing Pier				
	Small Boat Only				
	Shooting Range				
	State Park Office				

Gabbard Branch Wildlife Management Area Information

Public Hunting Area Location



Directions & Description:

From US 231 north of Morgantown, take Brownsville Rd. (St Hwy 70) east 9 miles to Leonard Oak Rd. (St Hwy 1328) on the right. Continue onto Millshed Rd. (St Hwy 2266) for 2.1 miles and turn left on Martin Phelps Rd.

Online Resources

Public Hunting Area users must abide by the Kentucky hunting, trapping, and fishing regulations. It is incumbent on persons using Public Hunting Areas to become familiar with these regulations. Kentucky Department of Fish & Wildlife Resources provides these regulations on our Web site at fw.ky.gov or by calling 1-800-858-1549.

Regional Locator



Area is open to hunting for statewide regulations and rules in effect for the county. Habitat consists primarily of old-field uplands, forest land, and open-wetland bottoms. Foot travel only from designated parking areas.

Wildlife Management Area Overview

Location & Size: Butler County, 809.02 Acres

Contact: (270) 476-1889

Elevation: Minimum 672 feet, maximum 401 feet.

Entrance GPS Coordinates: Latitude N 37.218612,
Longitude W -86.546610

Area Habitat: Open Land 17%, Forest 80%, wetland
3% Water < 1%