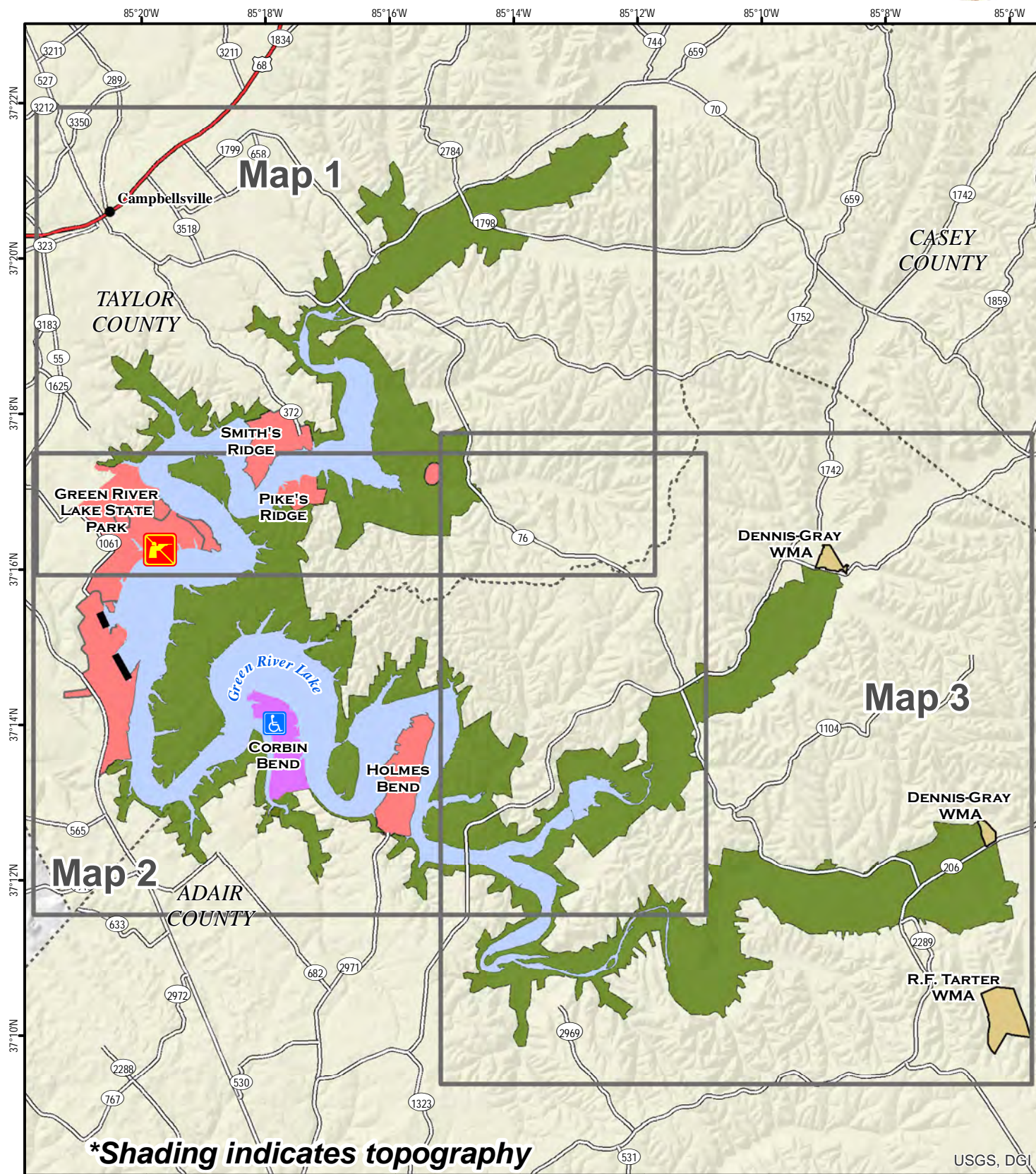




Green River Lake WMA Index Map



A map legend and additional information are provided on PDF pages that accompany this map.

Publication Date: 11/17/2016



0 0.5 1 1.5 2 2.5 3 Mile

Scale 1:127,000

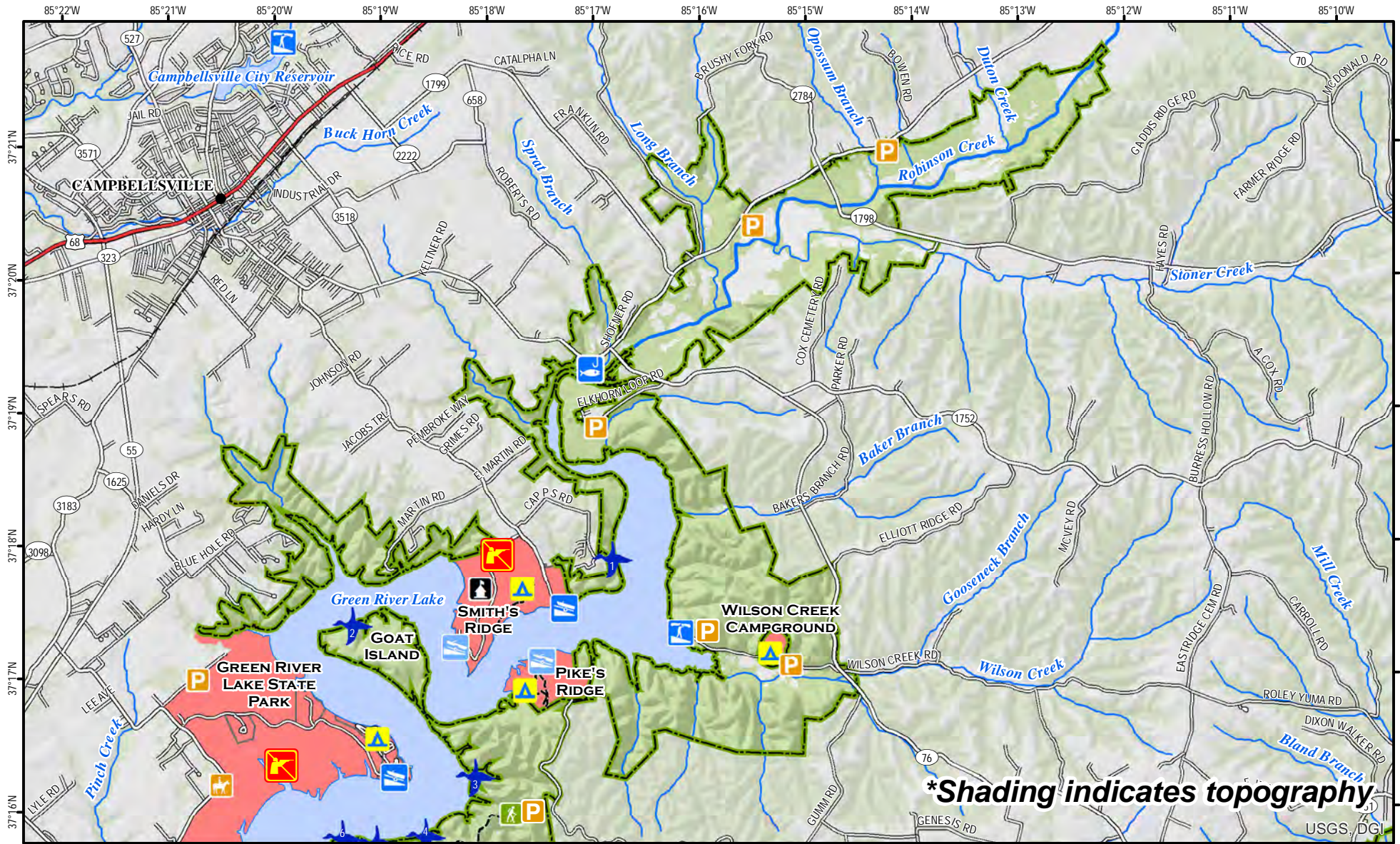


Note to Map Users

Map prepared by Kentucky Department of Fish & Wildlife Resources (KDFWR). Although KDFWR strives for accuracy, data used to create this map are from a variety of sources and dates; as such, KDFWR makes no representations regarding the accuracy or fitness for use of the information furnished herein.

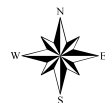


Green River Lake WMA Map 1



A map legend and additional information are provided on PDF pages that accompany this map.

Publication Date: 11/18/2016
Land Classification from National
Land Cover Database 2011



0 0.5 1 1.5 2 Mile

Scale 1:75,000



See Map 2

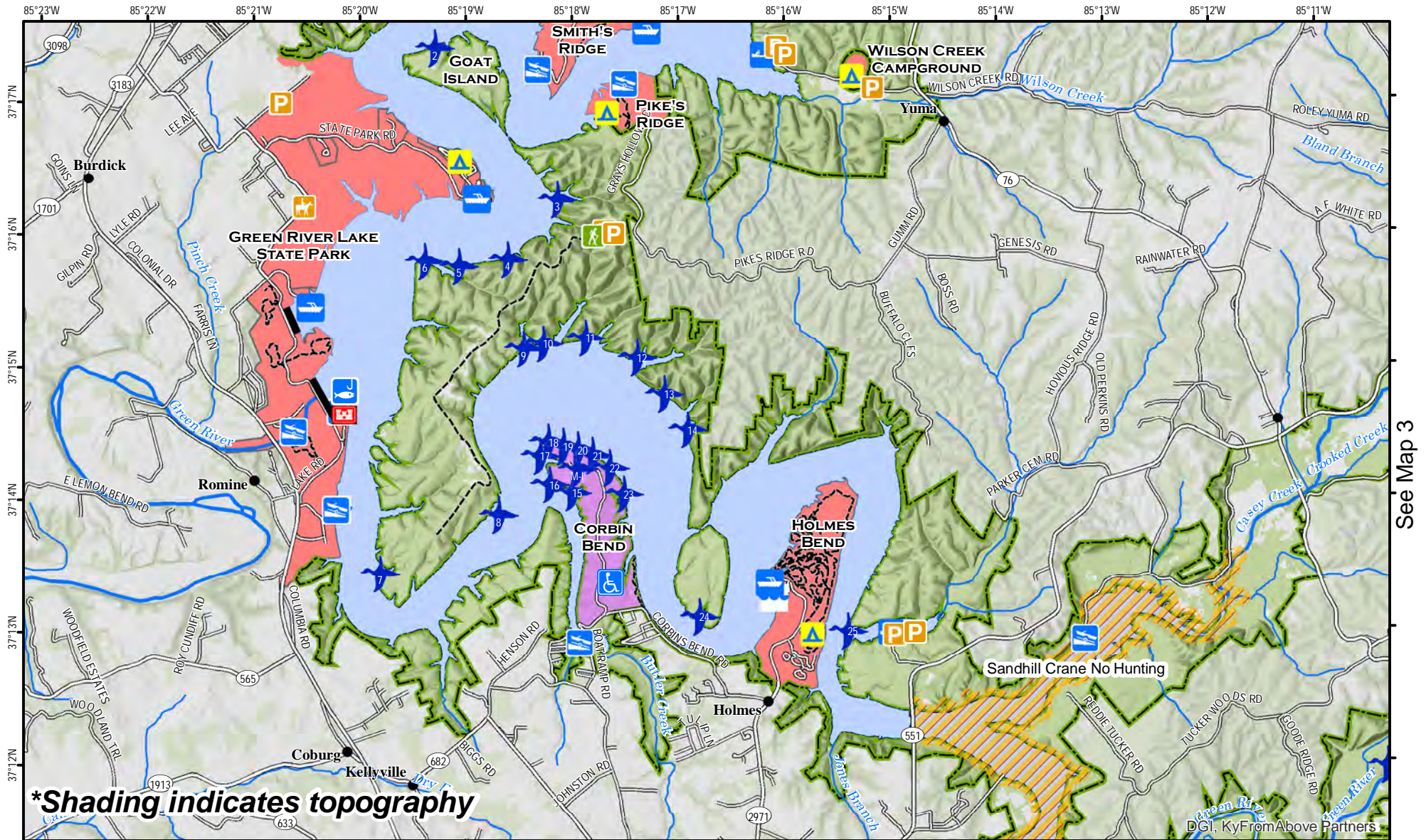
Note to Map Users

Map prepared by Kentucky Department of Fish & Wildlife Resources (KDFWR). Although KDFWR strives for accuracy, data used to create this map are from a variety of sources and dates; as such, KDFWR makes no representations regarding the accuracy or fitness for use of the information furnished herein.

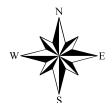


Green River Lake WMA Map 2

See Map 1



A map legend and additional information are provided on PDF pages that accompany this map.



0 0.5 1 1.5 2 Mile
Scale 1:75,000

Publication Date: 9/5/2018
Land Classification from National
Land Cover Database 2011



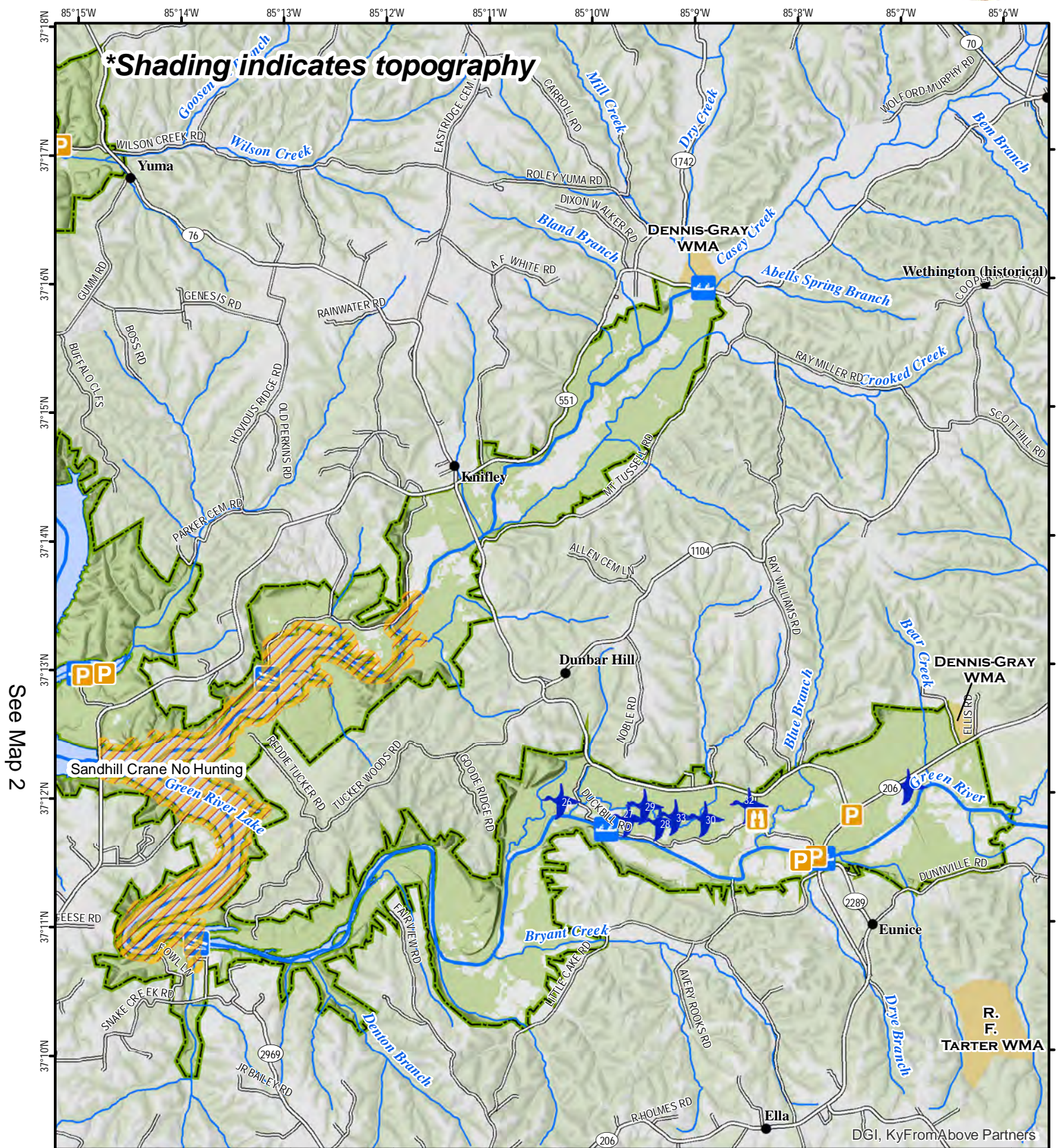
Note to Map Users

Map prepared by Kentucky Department of Fish & Wildlife Resources (KDFWR). Although KDFWR strives for accuracy, data used to create this map are from a variety of sources and dates; as such, KDFWR makes no representations regarding the accuracy or fitness for use of the information furnished herein.

See Map 3



Green River Lake WMA Map 3



See Map 2

A map legend and additional information are provided on PDF pages that accompany this map.

Publication Date: 9/5/2018
Land Classification from National Land Cover Database 2011



Note to Map Users

Map prepared by Kentucky Department of Fish & Wildlife Resources (KDFWR). Although KDFWR strives for accuracy, data used to create this map are from a variety of sources and dates; as such, KDFWR makes no representations regarding the accuracy or fitness for use of the information furnished herein.

Green River Lake WMA Information

Public Hunting Area Location

Green River Lake WMA



Regional Locator



WMA Overview

Location & Size: Taylor & Adair counties. WMA is 21,039 acres, Green River Lake is 8,181 acres.

Contact: (270) 465-5039; COE office (270) 465-4463

Elevation: minimum 687 feet, maximum 996 feet.

Entrance GPS coordinates: Latitude N 37.29253, Longitude W -85.29981

Area Habitat: mostly forest: open land 11%, forest 86%, wetland 0%, open water 2%.

Directions & Description:

WMA consists of shoreline surrounding Green River Lake. Located between Campbellsville and Columbia.

From Campbellsville take HWY 70 East 4 miles to where WMA begins. You can also take HWY 76 off of HWY 70 to other portions of the WMA. From Columbia take HWY 551 North for 8 miles or HWY 206 North for 12 miles to WMA. Various other county roads or boats can also be used to access the WMA.

Gently rolling terrain with flat bottoms and ridge tops. Mixed hardwoods with cleared areas in agricultural crops and wildlife food plots. Camping in designated areas only. Boating, fishing at Green River Lake State Park.

Owned by U.S. Army Corps of Engineers.

Online Resources

Public Hunting Area users must abide by the Kentucky hunting, trapping, and fishing regulations. It is incumbent on persons using Public Hunting Areas to become familiar with these regulations. Kentucky Department of Fish & Wildlife Resources provides these regulations on our Web site at fw.ky.gov or by calling 1-800-858-1549.

Wildlife Management Area Map Notes & Legend

NOTE TO MAP USERS:

For most WMA maps the landscape is depicted using a combination of elevation contours, hillshading and a green tint indicating woodland areas that is derived from satellite imagery. On WMAs that are relatively small or have a history of surface mining aerial photography is used.

WMA Map Legend

	WMA Office		WMA Boundary		Populated Place
	Information Kiosk		Aerial imagery		Kentucky Boundary
	Check station		Other Public Hunting Areas		Interstate Highway
	Mobility-impaired Hunting Blind		Area Off Limits		Kentucky Parkway
	Trailhead		No Hunting		U.S. Highway
	Horseback Trailhead		Seasonally Restricted Access		State Highway
	Parking Lot		Mobility Impaired Hunting Area		Local Road
	Picnic Area		Primitive Hunting Only		Forest Service Road
	Restrooms		Open Water		Active Railroad
	Wildlife Viewing Site		Wetland		Abandoned Railroad
	Interpretive Site		Woodland		Federal Recreation Trail
	Retriever Training Site				WMA Road
	Gate				WMA Foot Trail
	Campground				WMA Horse Trail
	Cemetery				Gas Pipeline
	Corps of Engineers Office				Powerline
	Waterfowl Blind				Rivers and Streams
	Any Boat				Dam
	Bank Access				Trout Waters
	Carrydown Only				Elevation Contour
	Fishing Pier				
	Small Boat Only				
	Shooting Range				
	State Park Office				