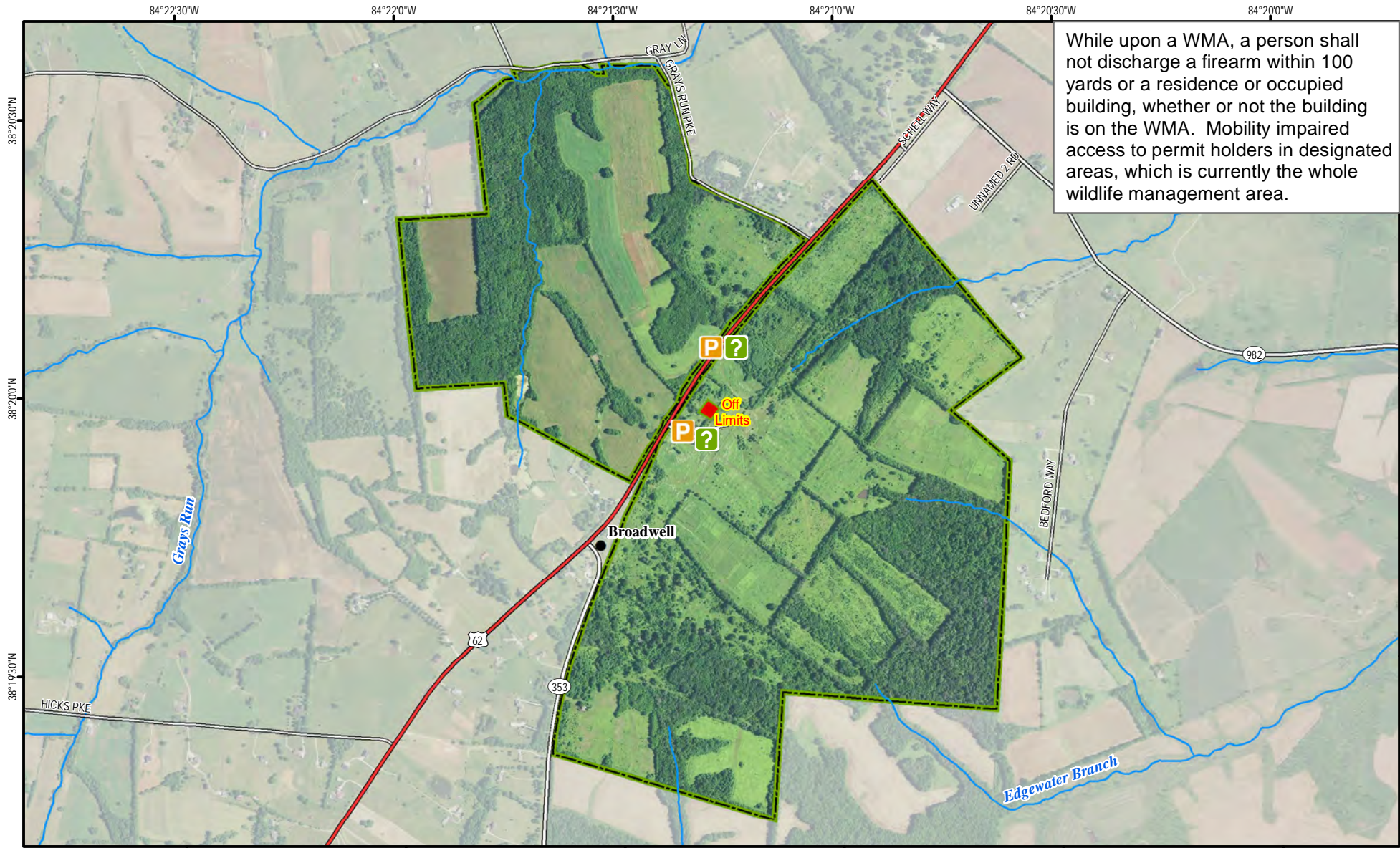
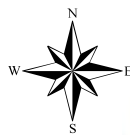


# Griffith Woods Wildlife Management Area



A map legend and additional information are provided on PDF pages that accompany this map.

Publication Date: 11/16/2016  
Imagery from Farm Service Agency 2016



0 0.5 Mile

Scale 1:18,000



### Note to Map Users

Map prepared by Kentucky Department of Fish & Wildlife Resources (KDFWR). Although KDFWR strives for accuracy, data used to create this map are from a variety of sources and dates; as such, KDFWR makes no representations regarding the accuracy or fitness for use of the information furnished herein.

# Griffith Woods WMA Information

## Public Hunting Area Location



## Regional Locator



## WMA Overview

**Location & Size:** Harrison County, 746 acres.

**Contact:** 859-428-2262

**Elevation:** minimum 790 feet, maximum 920 feet.

**Entrance GPS coordinates:** Latitude N 38.33457, Longitude W -84.354

**Area Habitat:** mostly open land: open land 68%, forest 31%, wetland 0%, open water 0%.

## Directions & Description:

Griffith Woods WMA (in the past referred to as Silver Lake Farm) is located in Harrison County near the junction of US 62 and Russell Cave RD (State RD 353). It is approximately 4 miles southwest of Cynthiana, 15 miles east of Georgetown, and 25 miles northeast of Lexington. KDFWR purchased approximately 350 acres from The Nature Conservancy while the University of Kentucky donated 391 acres acquired through the Kentucky Heritage Land Conservation Fund. The Nature Conservancy donated an additional 9 acres and retained ownership of a small parcel containing a family cemetery that is not open to public use.

The area has a long history of human occupation and agricultural use. The property consists of various cover types ranging from agriculture, old field, pasture, and woodland including a unique open woodland composed of chinquapin oaks, burr oaks, and blue ash that are 150-350 years old. This open woodland habitat is representative of a blue ash-oak savanna-woodland community type thought to have occupied the Bluegrass Region of Kentucky around the time of European settlement. KDFWR will focus on preserving and restoring this unique landscape while providing outdoor recreational opportunity for hunters, wildlife viewers, hikers, and other outdoor enthusiasts.

While upon a WMA, a person shall not discharge a firearm within 100 yards of a residence or occupied building, whether or not the building is on the WMA. Mobility impaired access to permit holders in designated areas, which is currently the whole wildlife management area.

Owned by Kentucky Department of Fish and Wildlife Resources.

## Online Resources




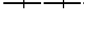

Public Hunting Area users must abide by the Kentucky hunting, trapping, and fishing regulations. It is incumbent on persons using Public Hunting Areas to become familiar with these regulations. Kentucky Department of Fish & Wildlife Resources provides these regulations on our Web site at [fw.ky.gov](http://fw.ky.gov) or by calling 1-800-858-1549.

# Wildlife Management Area Map Notes & Legend

## NOTE TO MAP USERS:

For most WMA maps the landscape is depicted using a combination of elevation contours, hillshading and a green tint indicating woodland areas that is derived from satellite imagery. On WMAs that are relatively small or have a history of surface mining aerial photography is used.

## WMA Map Legend

	WMA Office		WMA Boundary		Populated Place
	Information Kiosk		Aerial photograph		Kentucky Boundary
	Check station		Other Public Hunting Areas		Interstate Highway
	Mobility-impaired Hunting Blind		Area Off Limits		Kentucky Parkway
	Trailhead		No Hunting		U.S. Highway
	Horseback Trailhead		Seasonally Restricted Access		State Highway
	Parking Lot		Mobility Impaired Hunting Area		Local Road
	Picnic Area		Primitive Hunting Only		Forest Service Road
	Restrooms		Foot Traffic Only		Active Railroad
	Wildlife Viewing Site		Open Water		Abandoned Railroad
	Interpretive Site		Wetland		Federal Recreation Trail
	Retriever Training Site		Woodland		WMA Road
	Gate				WMA Foot Trail
	Campground				WMA Horse Trail
	Cemetery				Gas Pipeline
	Corps of Engineers Office				Powerline
	Waterfowl Blind				Rivers and Streams
	Shooting Range				Dam
	Established Bank Access				Trout Waters
	Fishing Pier				Elevation Contour
	Carrydown Launch				
	Small Boat Ramp				
	Large Boat Ramp				
	State Park Office				