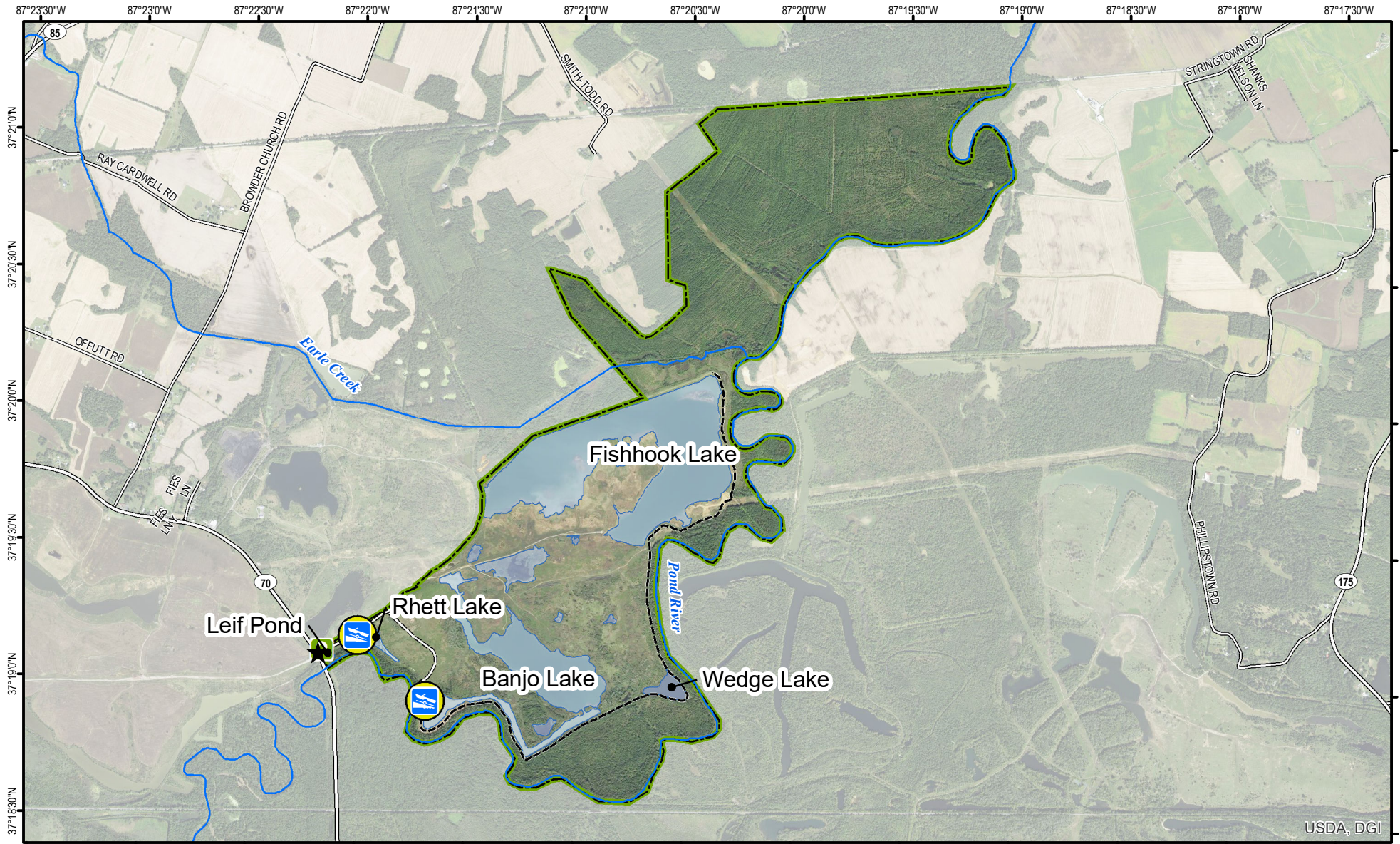


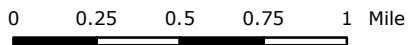
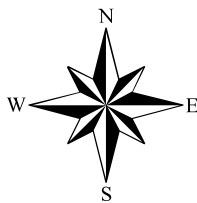
Harris-Dickerson WMA



USDA, DGI

A map legend and additional information are provided on PDF pages that accompany this map.

Publication Date: 3/10/2022
Imagery from Farm Service Agency 2018



Scale 1:36,482

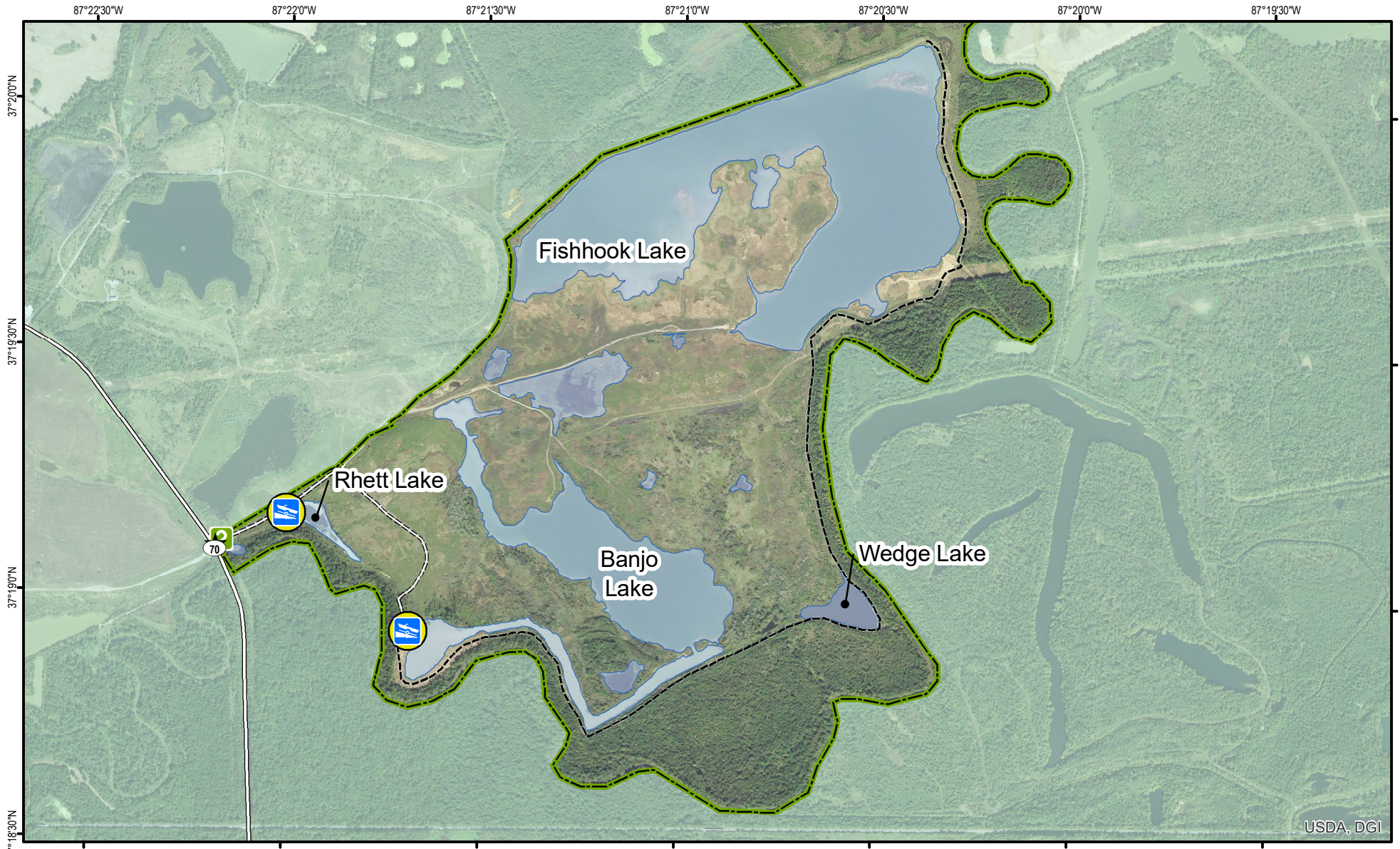


***Shading indicates topography**

Note to Map Users

Map prepared by Kentucky Department of Fish & Wildlife Resources (KDFWR). Although KDFWR strives for accuracy, data used to create this map are from a variety of sources and dates; as such, KDFWR makes no representations regarding the accuracy or fitness for use of the information furnished herein.

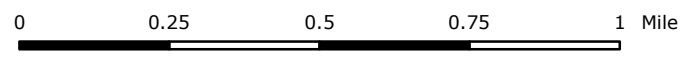
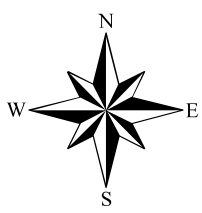
Harris-Dickerson WMA



USDA, DGI

A map legend and additional information are provided on PDF pages that accompany this map.

Publication Date: 3/10/2022
Imagery from Farm Service Agency 2018



Scale 1:20,259

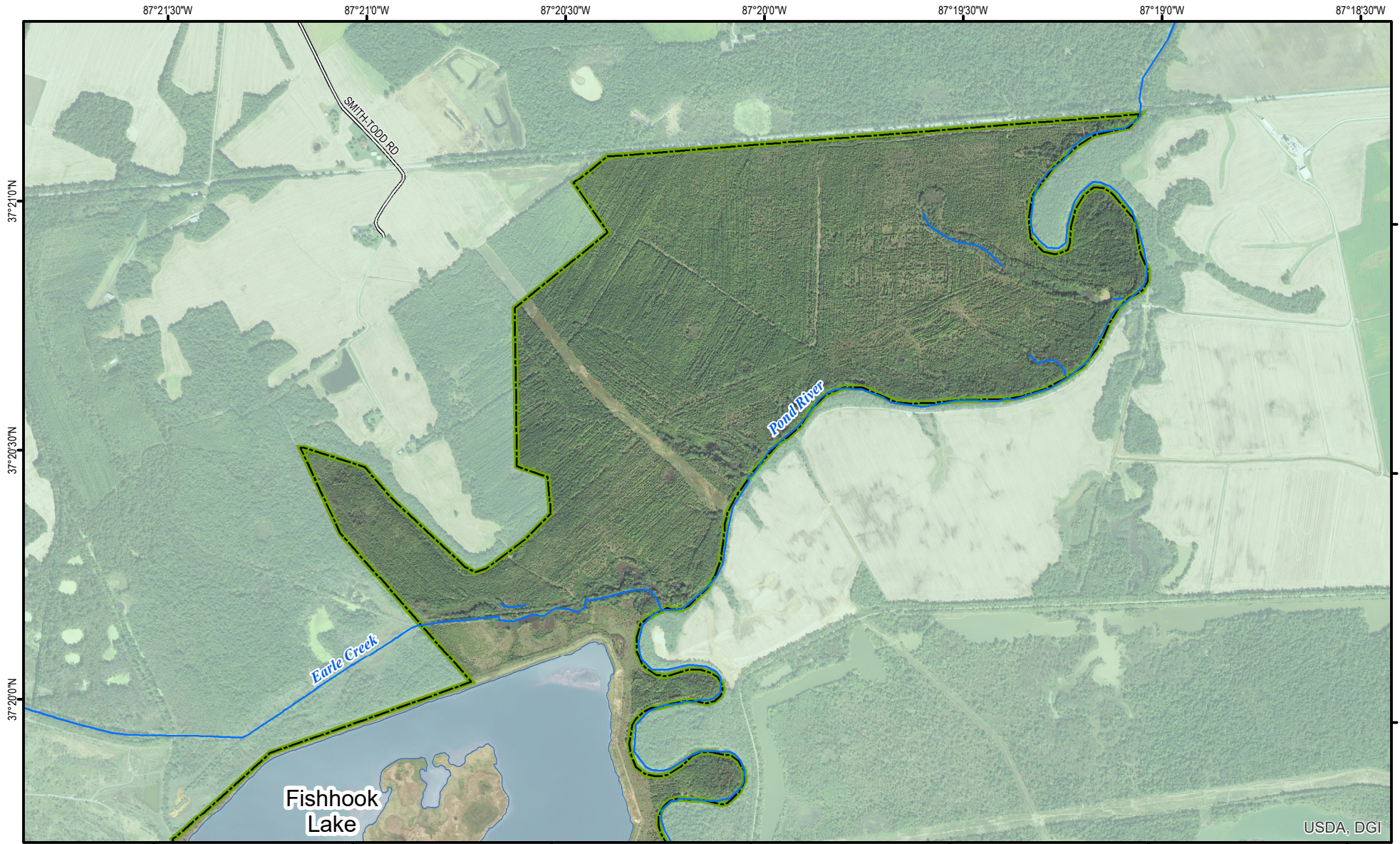


***Shading indicates topography**

Note to Map Users

Map prepared by Kentucky Department of Fish & Wildlife Resources (KDFWR). Although KDFWR strives for accuracy, data used to create this map are from a variety of sources and dates; as such, KDFWR makes no representations regarding the accuracy or fitness for use of the information furnished herein.

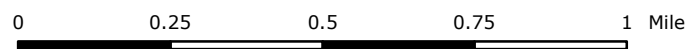
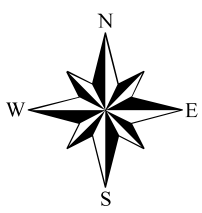
Harris-Dickerson WMA



USDA, DGI

A map legend and additional information are provided on PDF pages that accompany this map.

Publication Date: 3/10/2022
Imagery from Farm Service Agency 2018



Scale 1:20,000



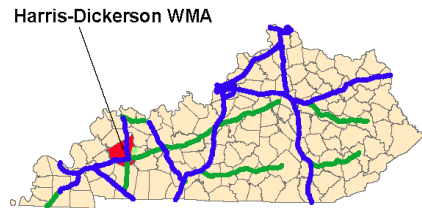
***Shading indicates topography**

Note to Map Users

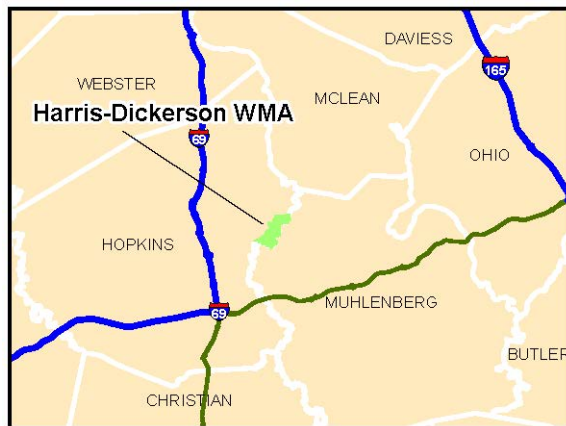
Map prepared by Kentucky Department of Fish & Wildlife Resources (KDFWR). Although KDFWR strives for accuracy, data used to create this map are from a variety of sources and dates; as such, KDFWR makes no representations regarding the accuracy or fitness for use of the information furnished herein.

Harris-Dickerson WMA Information

Public Hunting Area Location



Regional Locator



Directions & Description:

From Madisonville, KY, take Exit 114 from I69 onto Hwy 85/70. Travel east on Hwy 85/70 three miles and turn right onto Hwy 70. Travel three miles on Hwy 70 to entrance on the left.

Flat bottomland hardwood forests to the north, rolling reclaimed strip mine and lakes to the south, bounded on the east side by the Pond River. Good populations of deer, turkey, small game, furbearers waterfowl and fish exist on the area. ATVs are prohibited. Owned by KY Department of Fish and Wildlife Resources.

Online Resources

Public Hunting Area users must abide by the Kentucky hunting, trapping, and fishing regulations. It is incumbent on persons using Public Hunting Areas to become familiar with these regulations. Kentucky Department of Fish & Wildlife Resources provides these regulations on our Web site at fw.ky.gov or by calling 1-800-858-1549.

WMA Overview

Location & Size: Hopkins County, 1,837 acres

Contact (270) 476-1889

Elevation minimum 378 feet, maximum 393 feet.

Area Habitat Open Land 8%, Forest 4%, Wetland 70%, Open Water 19%.

Entrance GPS coordinates: Latitude N 37.318292, Longitude W -87.369566

Wildlife Management Area Map Notes & Legend

NOTE TO MAP USERS:

For most WMA maps the landscape is depicted using a combination of elevation contours, hillshading and a green tint indicating woodland areas that is derived from satellite imagery. On WMAs that are relatively small or have a history of surface mining aerial photography is used.

WMA Map Legend

	WMA Office		WMA Boundary		Populated Place
	Information Kiosk		Aerial imagery		Kentucky Boundary
	Check station		Other Public Hunting Areas		Interstate Highway
	Mobility-impaired Hunting Blind		Area Off Limits		Kentucky Parkway
	Trailhead		No Hunting		U.S. Highway
	Horseback Trailhead		Seasonally Restricted Access		State Highway
	Parking Lot		Mobility Impaired Hunting Area		Local Road
	Picnic Area		Primitive Hunting Only		Forest Service Road
	Restrooms		Open Water		Active Railroad
	Wildlife Viewing Site		Wetland		Abandoned Railroad
	Interpretive Site		Woodland		Federal Recreation Trail
	Retriever Training Site				WMA Road
	Gate				WMA Foot Trail
	Campground				WMA Horse Trail
	Cemetery				Gas Pipeline
	Corps of Engineers Office				Powerline
	Waterfowl Blind				Rivers and Streams
	Any Boat				Dam
	Bank Access				Trout Waters
	Carrydown Only				Elevation Contour
	Fishing Pier				
	Small Boat Only				
	Shooting Range				
	State Park Office				