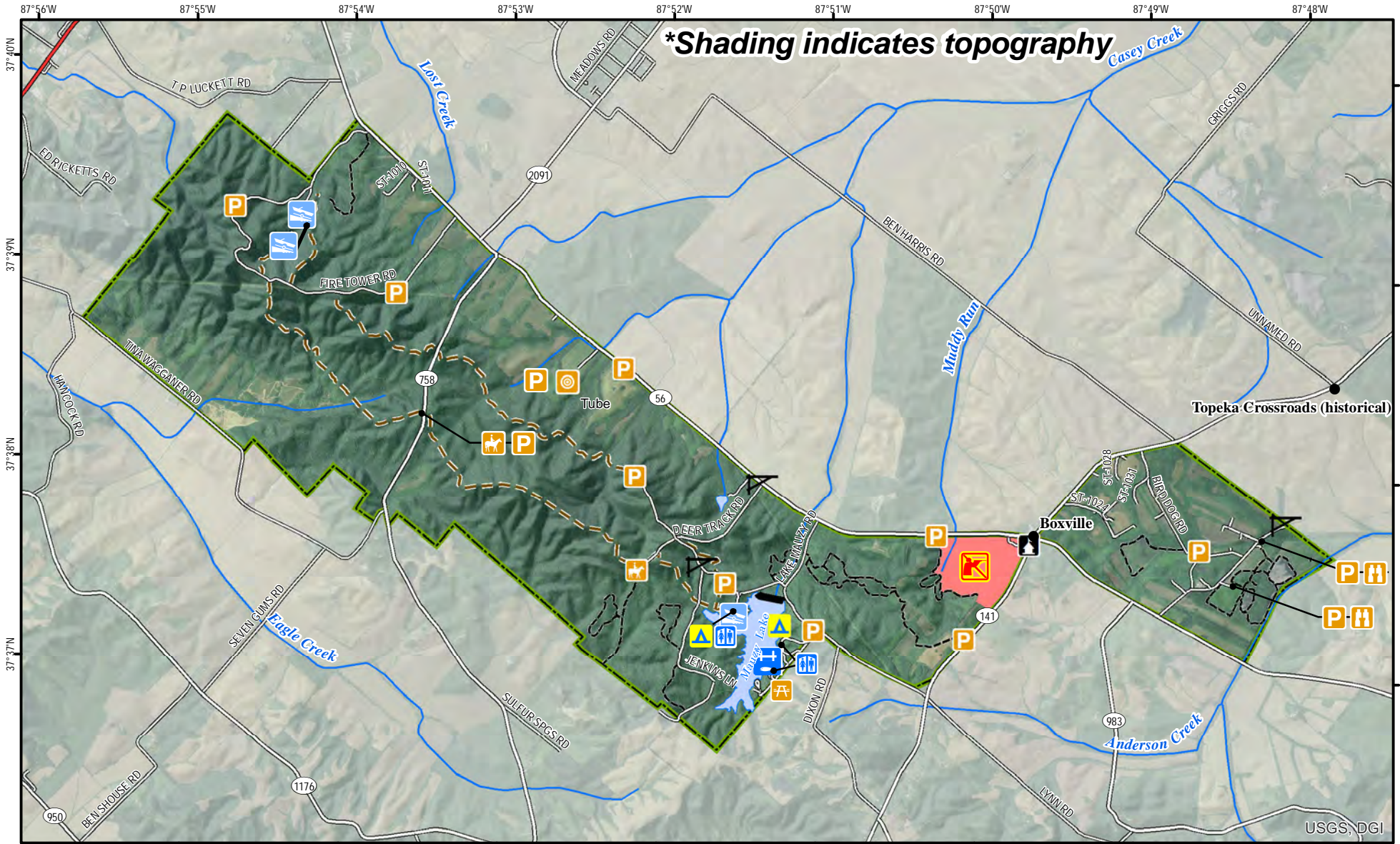




Higginson-Henry Wildlife Management Area



A map legend and additional information are provided on PDF pages that accompany this map.

Publication Date: 11/16/2016
 Imagery from Farm Service Agency 2016



0 0.5 1 1.5 2 Mile

Scale 1:50,000

Contour interval: 40 feet



Note to Map Users

Map prepared by Kentucky Department of Fish & Wildlife Resources (KDFWR). Although KDFWR strives for accuracy, data used to create this map are from a variety of sources and dates; as such, KDFWR makes no representations regarding the accuracy or fitness for use of the information furnished herein.

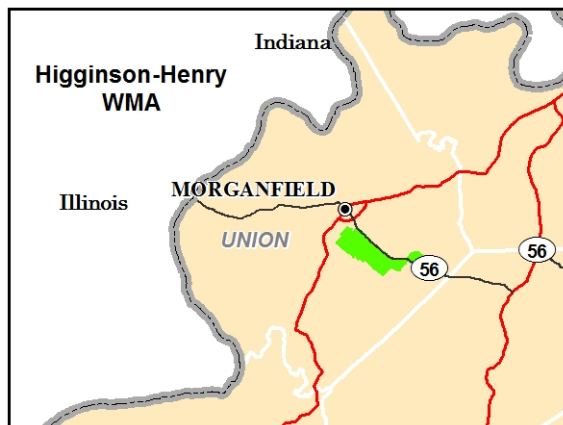
Higginson-Henry WMA Information

Public Hunting Area Location

Higginson-Henry WMA



Regional Locator



Directions & Description:

Two miles east of Morganfield on KY 56. Rolling hills with hardwood patches, numerous small clearings, and wildlife plantings. Migratory waterfowl, some shore birds on the moist soil units, has good rabbit and quail hunting. The area has an outdoor learning center with moist soil units, interpretive hiking trails and various wildlife habitat vegetative plantings for view. There are 23 miles of hiking only trails. Hiking and horseback riding are available on internal public roads and on 9 miles of designated trails. An 80-acre lake with several improvements for bank fishing access, launching ramp, 2 smaller lakes, picnic areas. Camping on designated sites only.

Shooting range (for single projectile firearms only; no shotshells or pistols allowed) open Monday-Saturday 9:00 AM-sunset & Sundays noon-sunset. Check online calendar or call Area office for closures or events.

Owned by Kentucky Department of Fish and Wildlife Resources.

Public Hunting Area users must abide by the Kentucky hunting, trapping, and fishing regulations. It is incumbent on persons using Public Hunting Areas to become familiar with these regulations. Kentucky Department of Fish & Wildlife Resources provides these regulations on our Web site at fw.ky.gov or by calling 1-800-858-1549.

WMA Overview

Location & Size: Union County, 5,450 acres.

Contact: (270) 389-3580

Elevation: minimum 396 feet, maximum 675 feet.

Entrance GPS coordinates: Latitude N 37.62797, Longitude W -87.82861

Area Habitat: mostly forest: open land 16%, forest 81%, wetland 1%, open water 1%.


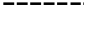
Online Resources

Wildlife Management Area Map Notes & Legend

NOTE TO MAP USERS:

For most WMA maps the landscape is depicted using a combination of elevation contours, hillshading and a green tint indicating woodland areas that is derived from satellite imagery. On WMAs that are relatively small or have a history of surface mining aerial photography is used.

WMA Map Legend

	WMA Office		WMA Boundary		Populated Place
	Information Kiosk		Aerial photograph		Kentucky Boundary
	Check station		Other Public Hunting Areas		Interstate Highway
	Mobility-impaired Hunting Blind		Area Off Limits		Kentucky Parkway
	Trailhead		No Hunting		U.S. Highway
	Horseback Trailhead		Seasonally Restricted Access		State Highway
	Parking Lot		Mobility Impaired Hunting Area		Local Road
	Picnic Area		Primitive Hunting Only		Forest Service Road
	Restrooms		Foot Traffic Only		Active Railroad
	Wildlife Viewing Site		Open Water		Abandoned Railroad
	Interpretive Site		Wetland		Federal Recreation Trail
	Retriever Training Site		Woodland		WMA Road
	Gate				WMA Foot Trail
	Campground				WMA Horse Trail
	Cemetery				Gas Pipeline
	Corps of Engineers Office				Powerline
	Waterfowl Blind				Rivers and Streams
	Shooting Range				Dam
	Established Bank Access				Trout Waters
	Fishing Pier				Elevation Contour
	Carrydown Launch				
	Small Boat Ramp				
	Large Boat Ramp				
	State Park Office				