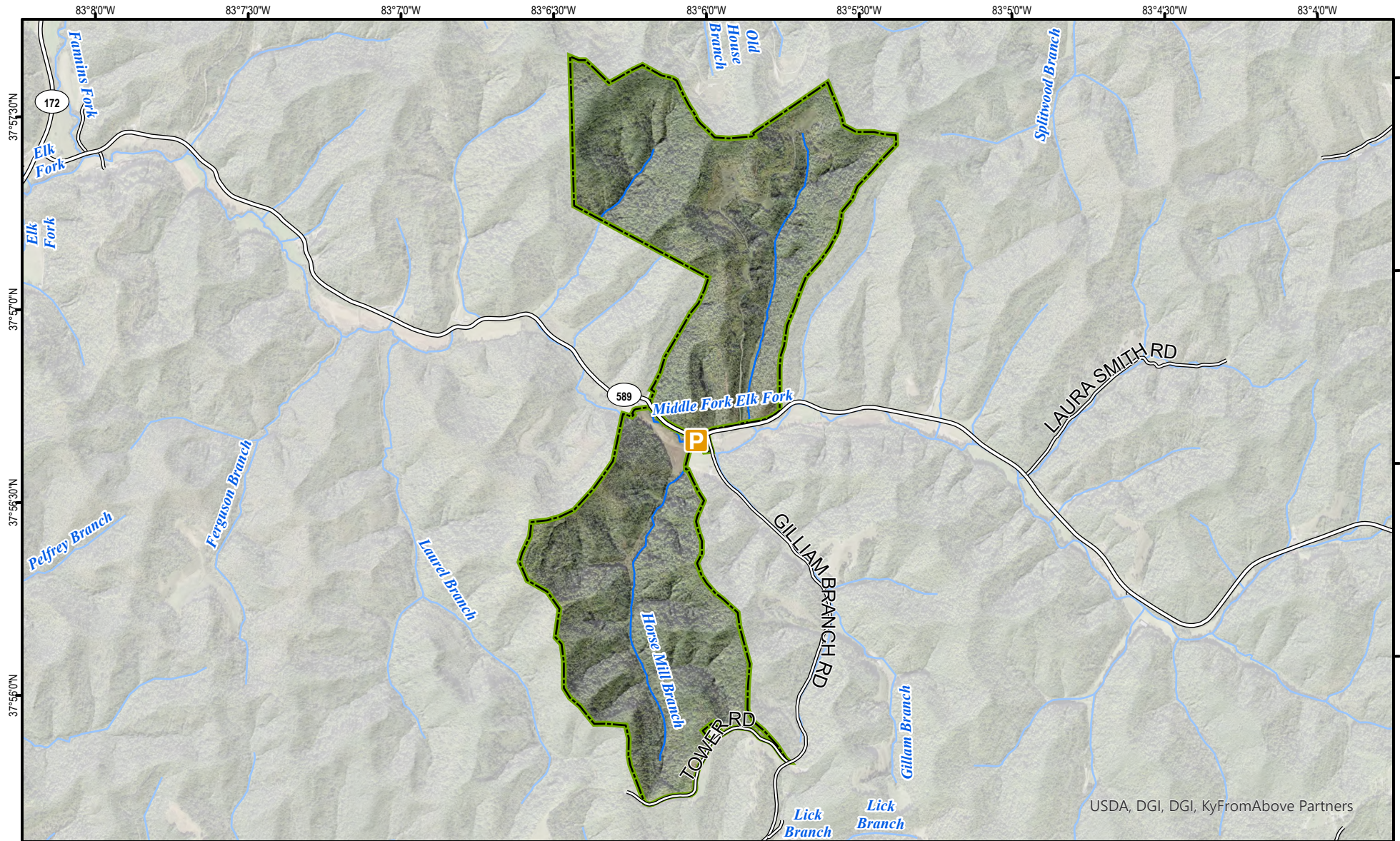


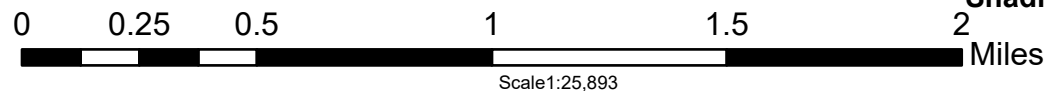
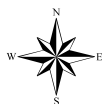
# Horse Mill Branch WMA



USDA, DGI, DGI, KyFromAbove Partners

A map legend and additional information are provided on PDF pages that accompany this map.

Publication Date: 3/27/2024  
Imagery from Farm Service Agency 2018



\*Shading indicates topography

## Note to Map Users

Map prepared by Kentucky Department of Fish & Wildlife Resources (KDFWR). Although KDFWR strives for accuracy, data used to create this map are from a variety of sources and dates; as such, KDFWR makes no representations regarding the accuracy or fitness for use of the information furnished herein.



# Wildlife Management Area Map Notes & Legend

## NOTE TO MAP USERS:

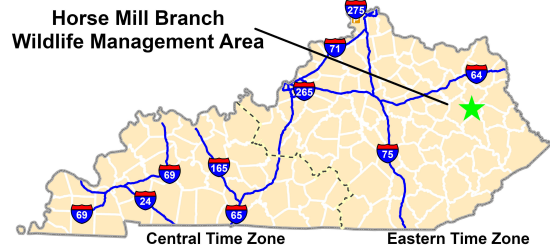
For most WMA maps the landscape is depicted using a combination of elevation contours, hillshading and a green tint indicating woodland areas that is derived from satellite imagery. On WMAs that are relatively small or have a history of surface mining aerial photography is used.

## WMA Map Legend

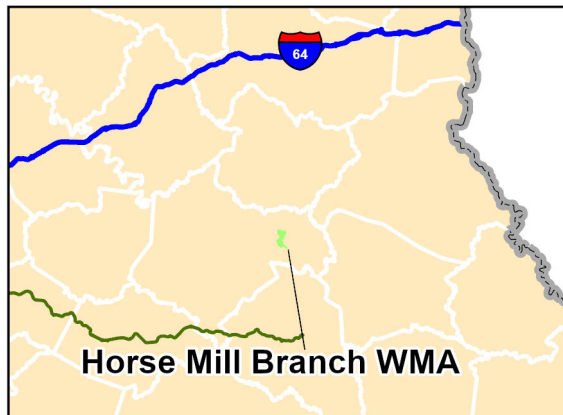
	WMA Office		WMA Boundary		Populated Place
	Information Kiosk		Aerial imagery		Kentucky Boundary
	Check station		Other Public Hunting Areas		Interstate Highway
	Mobility-impaired Hunting Blind		Area Off Limits		Kentucky Parkway
	Trailhead		No Hunting		U.S. Highway
	Horseback Trailhead		Seasonally Restricted Access		State Highway
	Parking Lot		Mobility Impaired Hunting Area		Local Road
	Picnic Area		Primitive Hunting Only		Forest Service Road
	Restrooms		Open Water		Active Railroad
	Wildlife Viewing Site		Wetland		Abandoned Railroad
	Interpretive Site		Woodland		Federal Recreation Trail
	Retriever Training Site				WMA Road
	Gate				WMA Foot Trail
	Campground				WMA Horse Trail
	Cemetery				Gas Pipeline
	Corps of Engineers Office				Powerline
	Waterfowl Blind				Rivers and Streams
	Any Boat				Dam
	Bank Access				Trout Waters
	Carrydown Only				Elevation Contour
	Fishing Pier				
	Small Boat Only				
	Shooting Range				
	State Park Office				

# Horse Mill Branch WMA Information

## Public Hunting Area Location



## Regional Locator



## Directions & Description:

The WMA consists mostly of upland hardwood forest with some scattered old-field habitat and will provide good opportunity for deer hunting, turkey hunting and small game species such as squirrel, rabbit and the possibility to flush grouse. Terrain is moderately steep slopes leading to upland oak forests on the ridge tops. Horse Mill WMA will be open to statewide regulations. KY Streams and Mitigation funding along with a generous donation

Horse Mill WMA is located in between West Liberty in Morgan County and Sandy Hook in Elliott County. To access the property take Highway 7 into West Liberty, turn left at the stop light onto Prestonsburg Street. Travel 1 mile and turn left onto Highway 172, take highway 172 for approximately 9 miles and turn right onto 589. Horse Mill WMA will be 2.5 miles from the intersection of Highway 172 and 589. The parking area for the WMA is located on the right side of the road at the intersection of Gilliam Branch road and 589.

## Online Resources

Public Hunting Area users must abide by the Kentucky hunting, trapping, and fishing regulations. It is incumbent on persons using Public Hunting Areas to become familiar with these regulations. Kentucky Department of Fish & Wildlife Resources provides these regulations on our Web site at [fw.ky.gov](http://fw.ky.gov) or by calling 1-800-858-1549.

## WMA Overview

**Location & Size:** Morgan County, 640 acres

**Contact** (606) 226 - 9133

**Elevation** minimum 880 feet, maximum 1240 feet.

**Area Habitat** mostly Deciduous Forest: open land 1%, Deciduous Forest 98%, Hay / Pasture 1%.

**Entrance GPS coordinates:** Latitude N 37.94353, Longitude W -83.101212