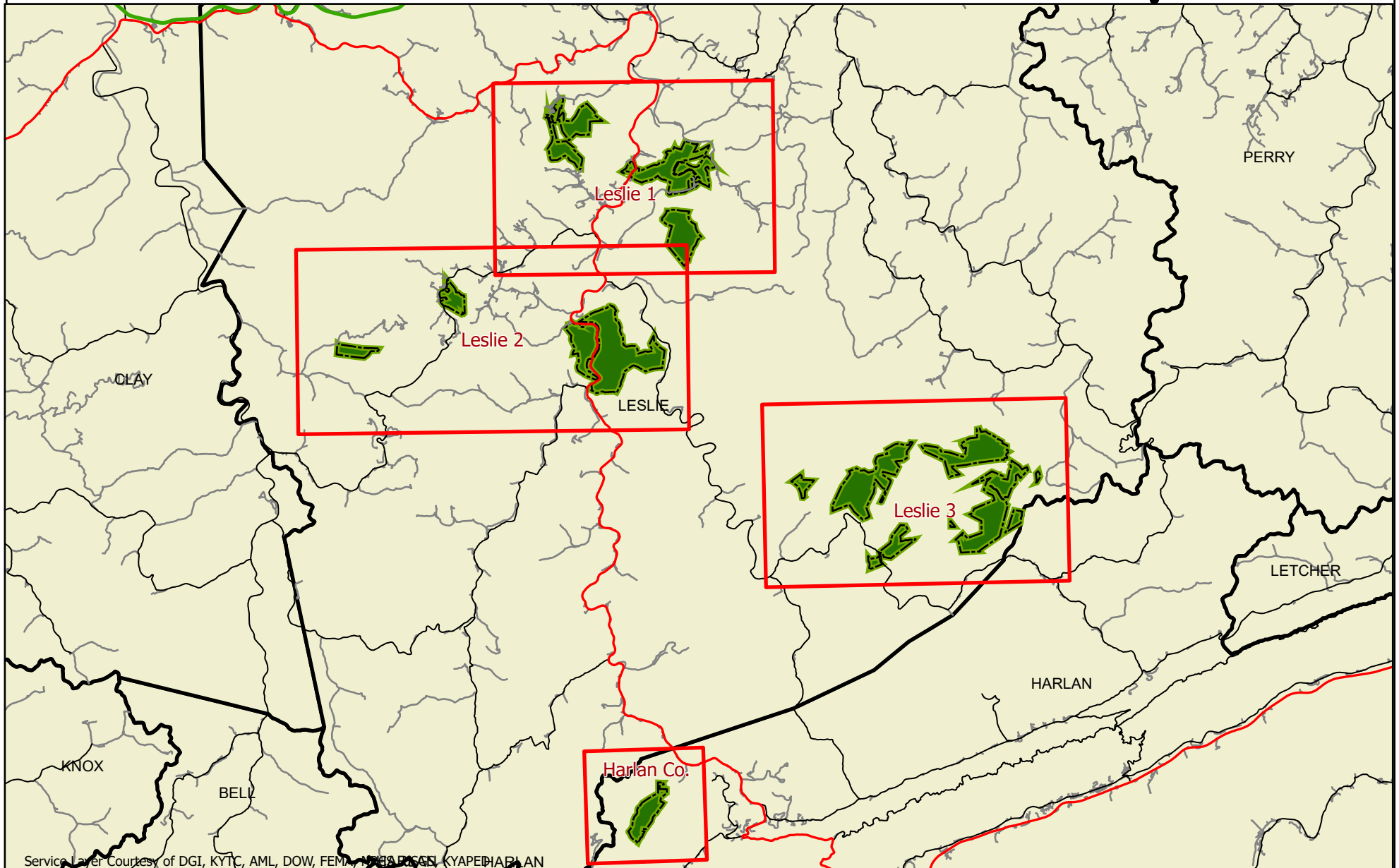
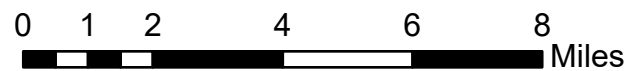


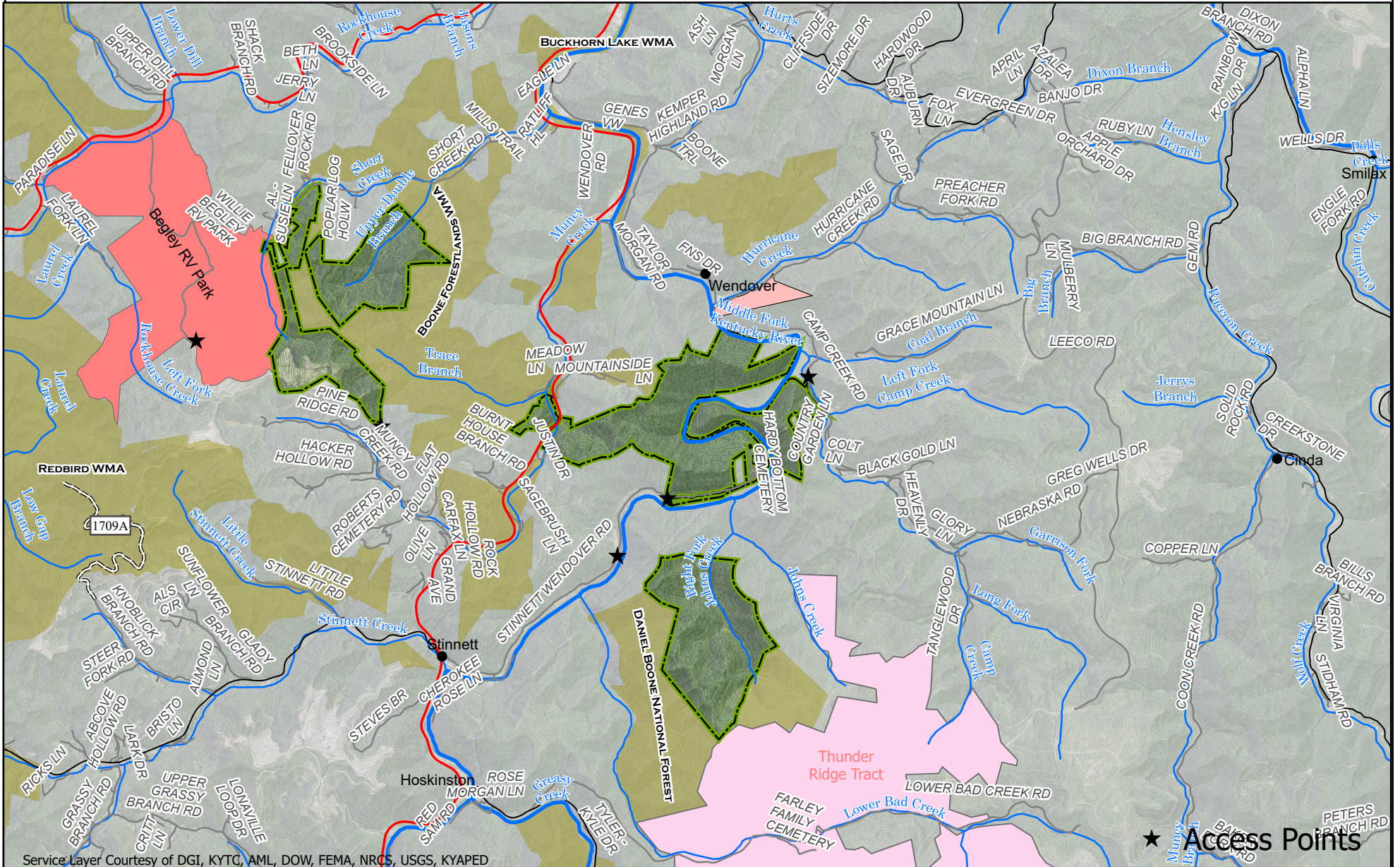
# Hoskins WMA - Index Map



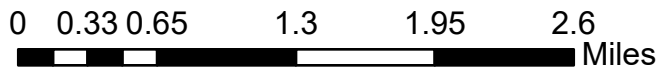
Service Layer Courtesy of DGI, KYTC, AML, DOW, FEMA, NCHS, BASS, KYAPED, HARLAN



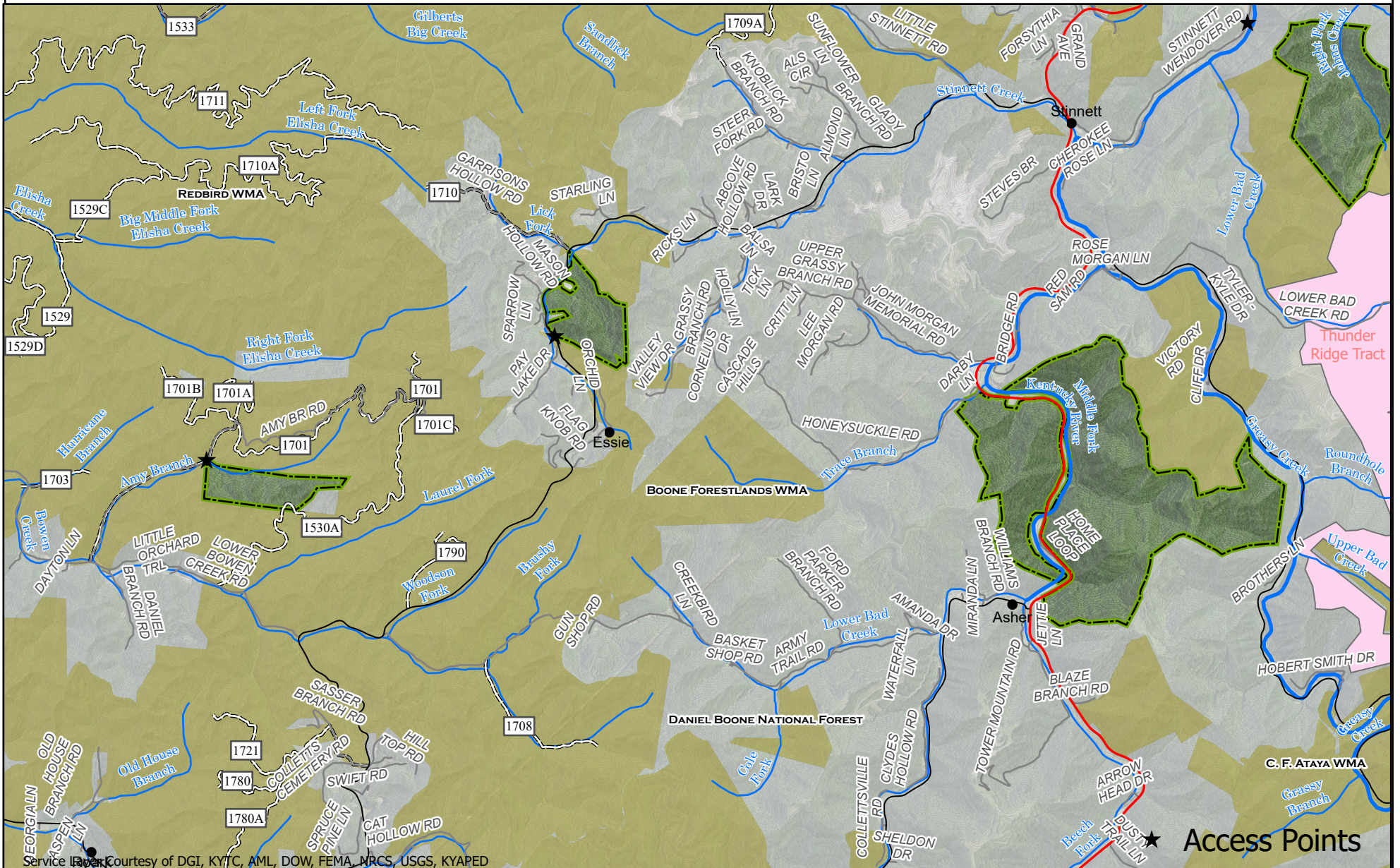
# Leslie 1



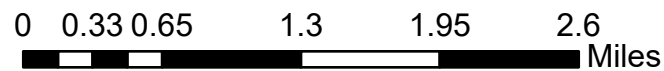
Service Layer Courtesy of DGI, KYTC, AML, DOW, FEMA, NRCS, USGS, KYAPED



# Leslie 2

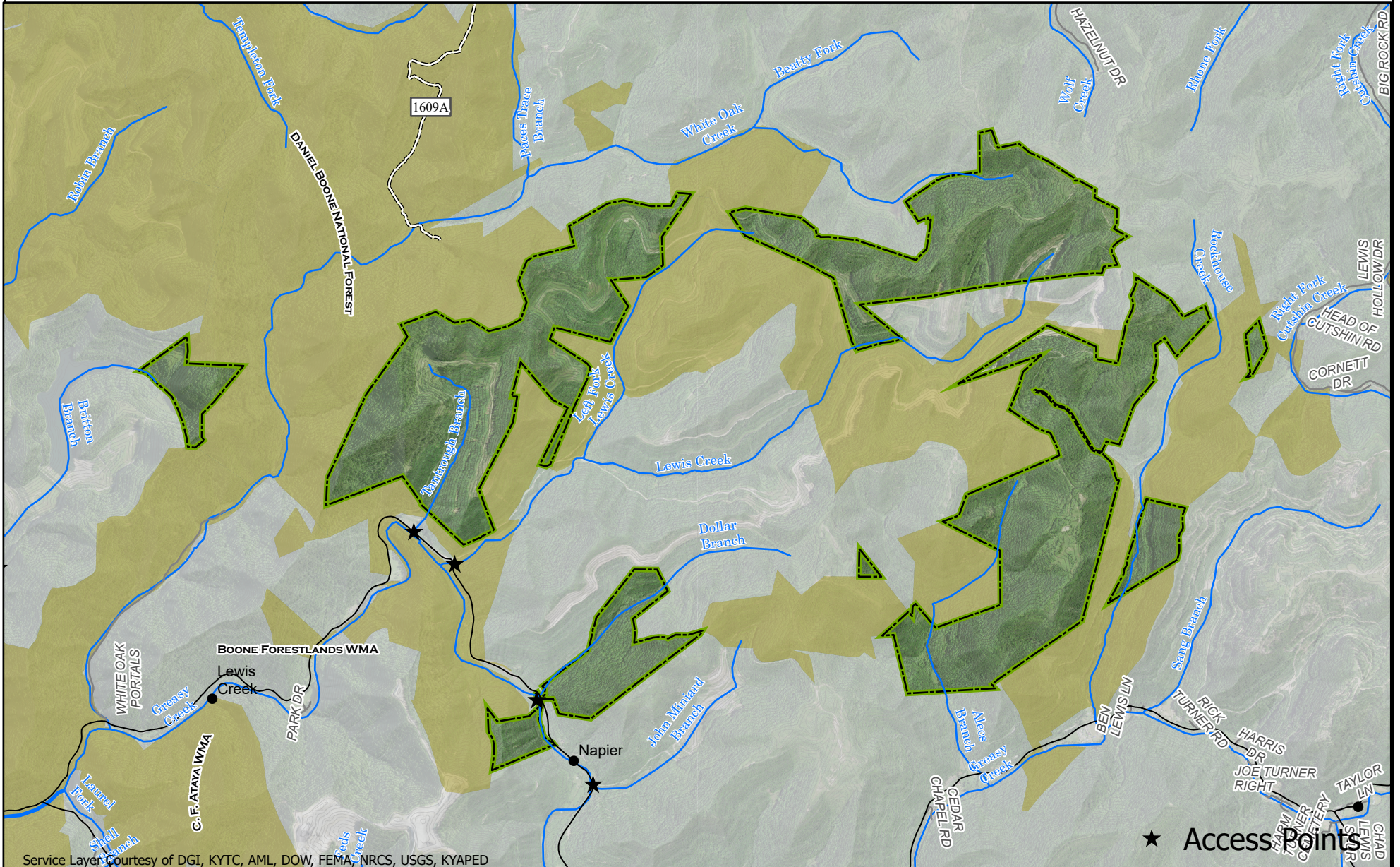


Service Layer Courtesy of DGI, KYTC, AML, DOW, FEMA, NRCS, USGS, KYAPD

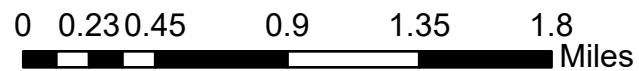


★ Access Points

# Leslie 3



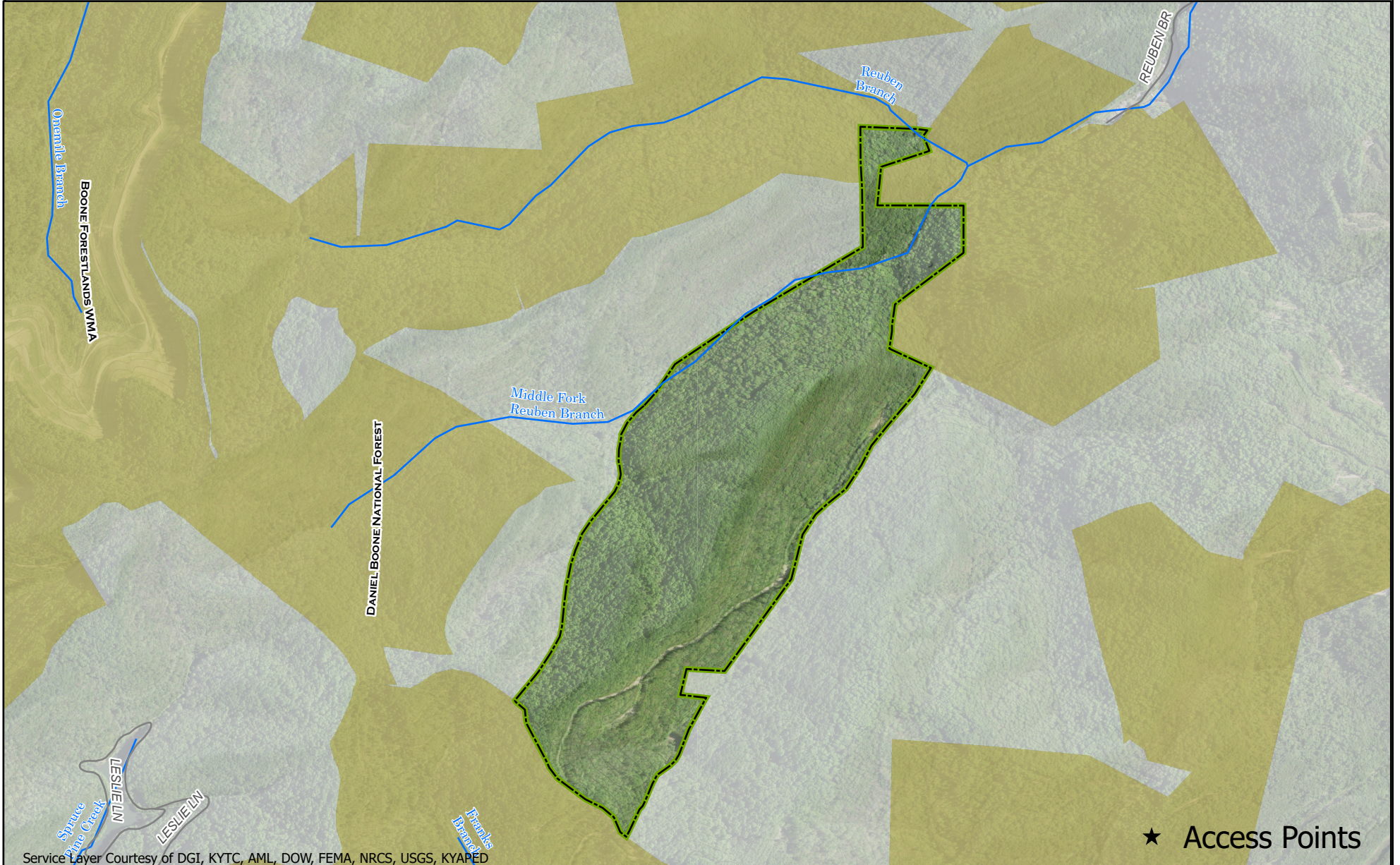
Service Layer Courtesy of DGI, KYTC, AML, DOW, FEMA, NRCS, USGS, KYAPED



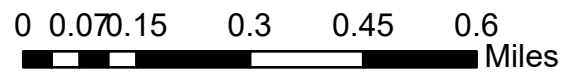
★ Access Points

11/10/2022 9:59 PM

# Harlan Co

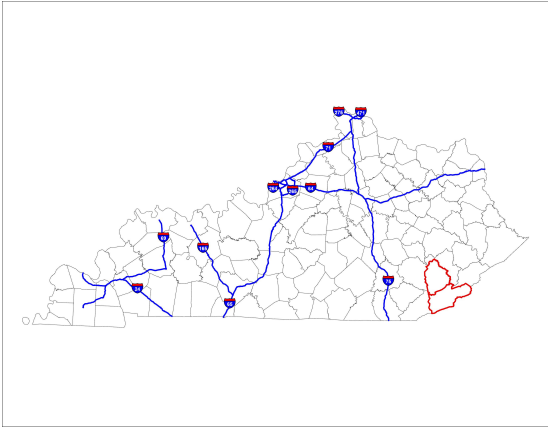


Service Layer Courtesy of DGI, KYTC, AML, DOW, FEMA, NRCS, USGS, KYAPED



# Hoskins WMA Area Information

## Public Hunting Area Location



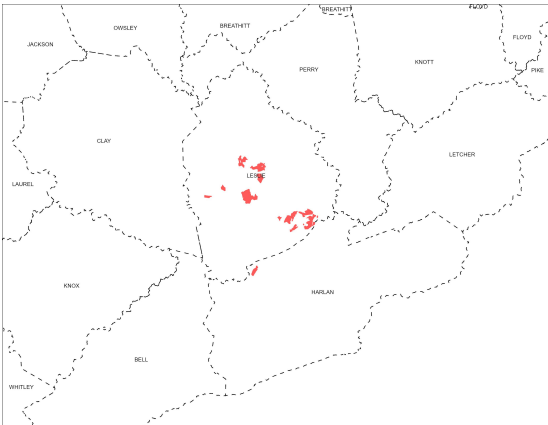
### Description:

The Hoskins WMA is divided into numerous tracts within Clay, Harlan, and Leslie Counties. Habitat types vary on the WMA, but a majority of the property is a mixture of closed canopy forest and reclaimed mine lands in varying stages of regeneration. Hunters should expect to traverse relatively rough terrain on most all of the tracts. Open under statewide regulations for all game species.

### Online Resources

Public Hunting Area users must abide by the Kentucky hunting, trapping, and fishing regulations. It is incumbent on persons using Public Hunting Areas to become familiar with these regulations. Kentucky Department of Fish & Wildlife Resources provides these regulations on our Web site at [fw.ky.gov](http://fw.ky.gov) or by calling 1-800-858-1549.

## Regional Locator



Remember that mining equipment and large machinery always have the right-of-way when present.

## Hunting Access Area Overview Location &

**Size:** Leslie & Harlan County, 5,298 acres.

**Contact:** For general questions about the WMA, Wes Hodges 606-654-2533. Please contact Mark Peterson for elk questions 606-847-8499.

**Elevation:** minimum 880 feet, maximum 2,520 feet.

**Area Habitat:** Open land 5%, forest 95%, wetland 0%, water 0%

# Wildlife Management Area Map Notes & Legend

## NOTE TO MAP USERS:

For most WMA maps the landscape is depicted using a combination of elevation contours, hillshading and a green tint indicating woodland areas that is derived from satellite imagery. On WMAs that are relatively small or have a history of surface mining aerial photography is used.

## WMA Map Legend

	WMA Office		WMA Boundary		Populated Place
	Information Kiosk		Aerial imagery		Kentucky Boundary
	Check station		Other Public Hunting Areas		Interstate Highway
	Mobility-impaired Hunting Blind		Area Off Limits		Kentucky Parkway
	Trailhead		No Hunting		U.S. Highway
	Horseback Trailhead		Seasonally Restricted Access		State Highway
	Parking Lot		Mobility Impaired Hunting Area		Local Road
	Picnic Area		Primitive Hunting Only		Forest Service Road
	Restrooms		Open Water		Active Railroad
	Wildlife Viewing Site		Wetland		Abandoned Railroad
	Interpretive Site		Woodland		Federal Recreation Trail
	Retriever Training Site				WMA Road
	Gate				WMA Foot Trail
	Campground				WMA Horse Trail
	Cemetery				Gas Pipeline
	Corps of Engineers Office				Powerline
	Waterfowl Blind				Rivers and Streams
	Any Boat				Dam
	Bank Access				Trout Waters
	Carrydown Only				Elevation Contour
	Fishing Pier				
	Small Boat Only				
	Shooting Range				
	State Park Office				