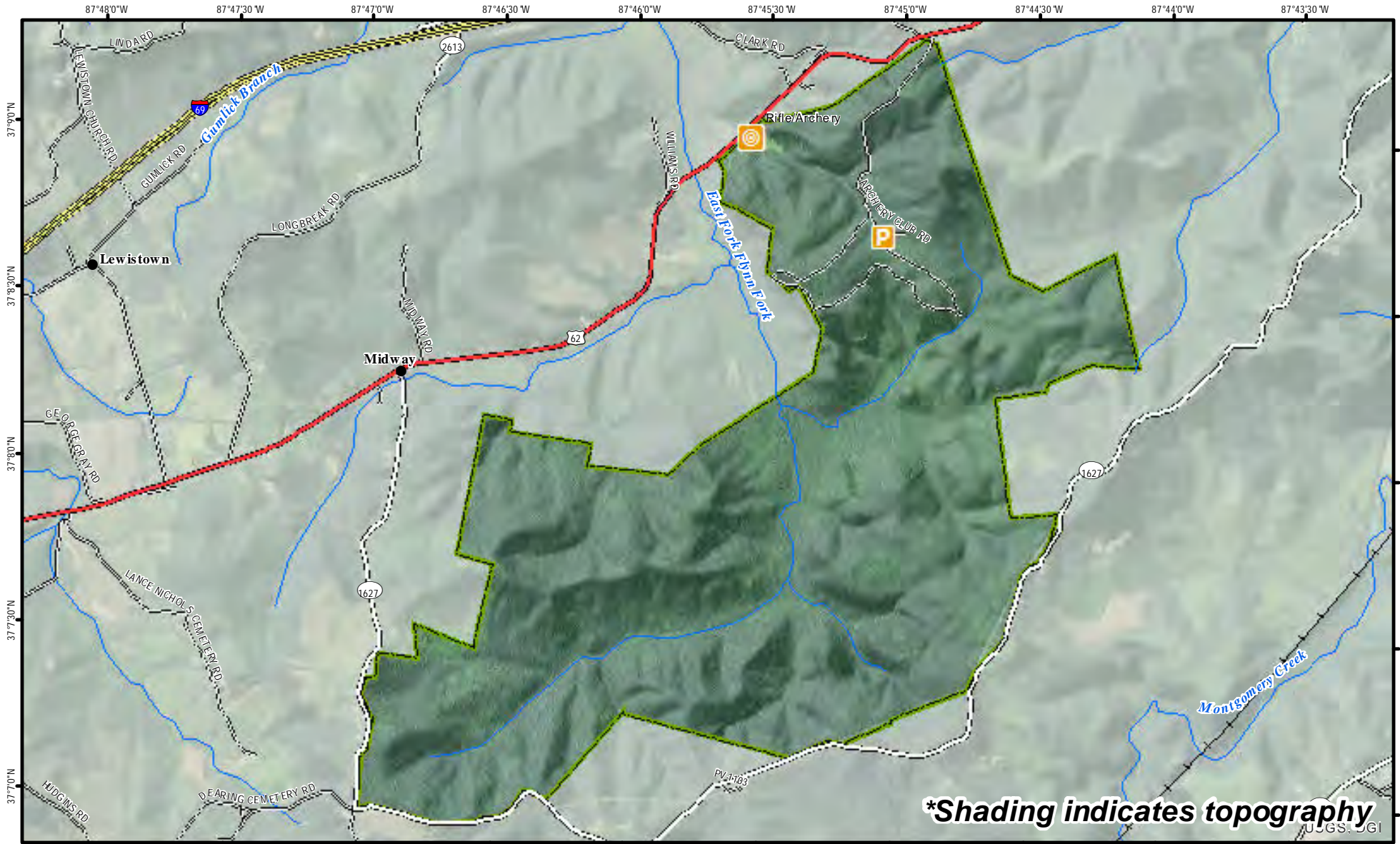
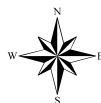


Jones-Keeney Wildlife Management Area



***Shading indicates topography**

A map legend and additional information are provided on PDF pages that accompany this map.



0 0.25 0.5 0.75 1 Mile

Scale 1:30,000

Publication Date: 1/31/2017
Imagery from Farm Service Agency 2016



Note to Map Users

Map prepared by Kentucky Department of Fish & Wildlife Resources (KDFWR). Although KDFWR strives for accuracy, data used to create this map are from a variety of sources and dates; as such, KDFWR makes no representations regarding the accuracy or fitness for use of the information furnished herein.

Jones-Keeney WMA Information

Public Hunting Area Location



Directions & Description:

Between Princeton and Dawson Springs on US 62.
From I-69 accessed via exit 13 (KY-293
Providence/Princeton or exit 24 KY-109 Providence/
Dawson Springs.

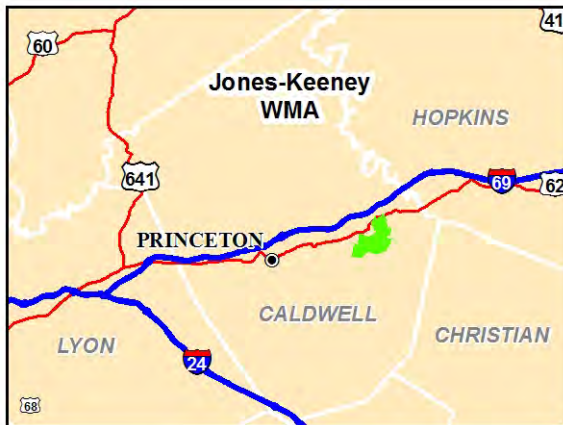
Very few trails, roads within area. Hilly terrain,
forested sections, old growth forest, some clearings in
bottoms, on ridges. Scenic overlook. Bow and rifle
ranges, rules posted.

Owned by Kentucky Department of Fish and Wildlife
Resources.

Online Resources

Public Hunting Area users must abide by the
Kentucky hunting, trapping, and fishing regulations.
It is incumbent on persons using Public Hunting
Areas to become familiar with these regulations.
Kentucky Department of Fish & Wildlife Resources
provides these regulations on our Web site at
fw.ky.gov or by calling 1-800-858-1549.

Regional Locator



WMA Overview

Location & Size: Caldwell County, 2,055 acres.

Contact: (270) 753-6913

Elevation: minimum 390 feet, maximum 688 feet.

Entrance GPS coordinates: Latitude N 37.1497,
Longitude W -87.75992


Area Habitat: mostly forest: open land 1%, forest
99%, wetland 1%, open water 0%.

Wildlife Management Area Map Notes & Legend

NOTE TO MAP USERS:

For most WMA maps the landscape is depicted using a combination of elevation contours, hillshading and a green tint indicating woodland areas that is derived from satellite imagery. On WMAs that are relatively small or have a history of surface mining aerial photography is used.

WMA Map Legend

	WMA Office		WMA Boundary		Populated Place
	Information Kiosk		Aerial photograph		Kentucky Boundary
	Check station		Other Public Hunting Areas		Interstate Highway
	Mobility-impaired Hunting Blind		Area Off Limits		Kentucky Parkway
	Trailhead		No Hunting		U.S. Highway
	Horseback Trailhead		Seasonally Restricted Access		State Highway
	Parking Lot		Mobility Impaired Hunting Area		Local Road
	Picnic Area		Primitive Hunting Only		Forest Service Road
	Restrooms		Foot Traffic Only		Active Railroad
	Wildlife Viewing Site		Open Water		Abandoned Railroad
	Interpretive Site		Wetland		Federal Recreation Trail
	Retriever Training Site		Woodland		WMA Road
	Gate				WMA Foot Trail
	Campground				WMA Horse Trail
	Cemetery				Gas Pipeline
	Corps of Engineers Office				Powerline
	Waterfowl Blind				Rivers and Streams
	Shooting Range				Dam
	Established Bank Access				Trout Waters
	Fishing Pier				Elevation Contour
	Carrydown Launch				
	Small Boat Ramp				
	Large Boat Ramp				
	State Park Office				