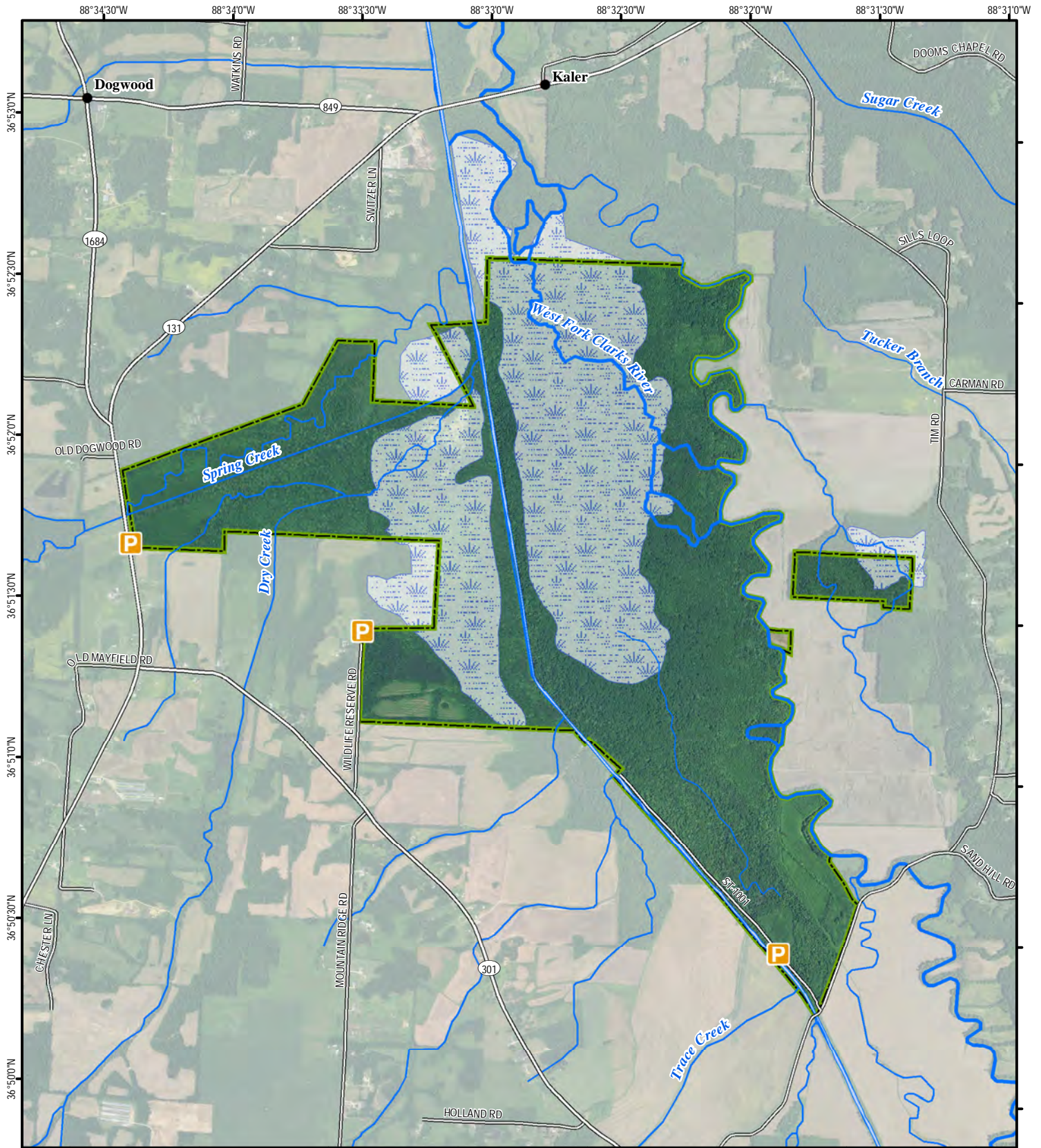
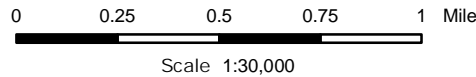
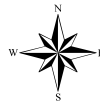


# Kaler Bottoms Wildlife Management Area



A map legend and additional information are provided on PDF pages that accompany this map.



**Note to Map Users**

Map prepared by Kentucky Department of Fish & Wildlife Resources (KDFWR). Although KDFWR strives for accuracy, data used to create this map are from a variety of sources and dates; as such, KDFWR makes no representations regarding the accuracy or fitness for use of the information furnished herein.

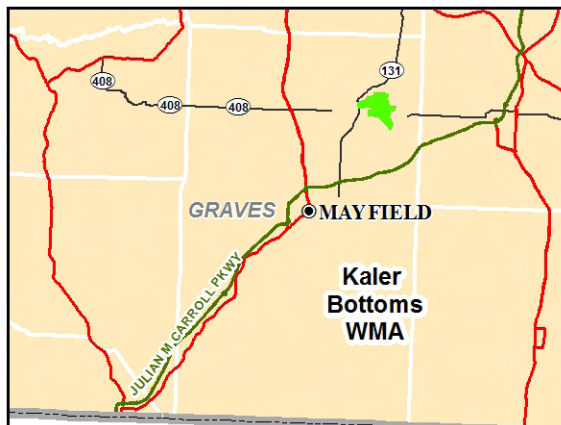


# Kaler Bottoms WMA Information

## Public Hunting Area Location



## Regional Locator



## Directions & Description:

Eight miles northeast of Mayfield between the JULIAN M CARROLL PKWY to the south, US-45 to the west, and I-24 to the north. Access from KY 131, KY 408 and Tim Owen RD.

Cypress swamps, hardwoods, low terrain throughout. Limited access, especially when bottoms are wet. Swamp rabbit, great blue heron rookery, black vulture roost. No developed facilities.

Owned by Kentucky Department of Fish and Wildlife Resources.

## Online Resources

Public Hunting Area users must abide by the Kentucky hunting, trapping, and fishing regulations. It is incumbent on persons using Public Hunting Areas to become familiar with these regulations. Kentucky Department of Fish & Wildlife Resources provides these regulations on our Web site at [fw.ky.gov](http://fw.ky.gov) or by calling 1-800-858-1549.

## WMA Overview

**Location & Size:** Graves County, 1,852 acres.

**Contact:** (270) 753-6913

**Elevation:** minimum 341 feet, maximum 470 feet.

**Entrance GPS coordinates:** Latitude N 36.83822, Longitude W -88.52705

**Area Habitat:** mostly wetland: open land 4%, forest 36%, wetland 60%, open water 0%.




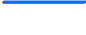


# Wildlife Management Area Map Notes & Legend

## NOTE TO MAP USERS:

For most WMA maps the landscape is depicted using a combination of elevation contours, hillshading and a green tint indicating woodland areas that is derived from satellite imagery. On WMAs that are relatively small or have a history of surface mining aerial photography is used.

## WMA Map Legend

	WMA Office		WMA Boundary		Populated Place
	Information Kiosk		Aerial photograph		Kentucky Boundary
	Check station		Other Public Hunting Areas		Interstate Highway
	Mobility-impaired Hunting Blind		Area Off Limits		Kentucky Parkway
	Trailhead		No Hunting		U.S. Highway
	Horseback Trailhead		Seasonally Restricted Access		State Highway
	Parking Lot		Mobility Impaired Hunting Area		Local Road
	Picnic Area		Primitive Hunting Only		Forest Service Road
	Restrooms		Foot Traffic Only		Active Railroad
	Wildlife Viewing Site		Open Water		Abandoned Railroad
	Interpretive Site		Wetland		Federal Recreation Trail
	Retriever Training Site		Woodland		WMA Road
	Gate				WMA Foot Trail
	Campground				WMA Horse Trail
	Cemetery				Gas Pipeline
	Corps of Engineers Office				Powerline
	Waterfowl Blind				Rivers and Streams
	Shooting Range				Dam
	Established Bank Access				Trout Waters
	Fishing Pier				Elevation Contour
	Carrydown Launch				
	Small Boat Ramp				
	Large Boat Ramp				
	State Park Office				