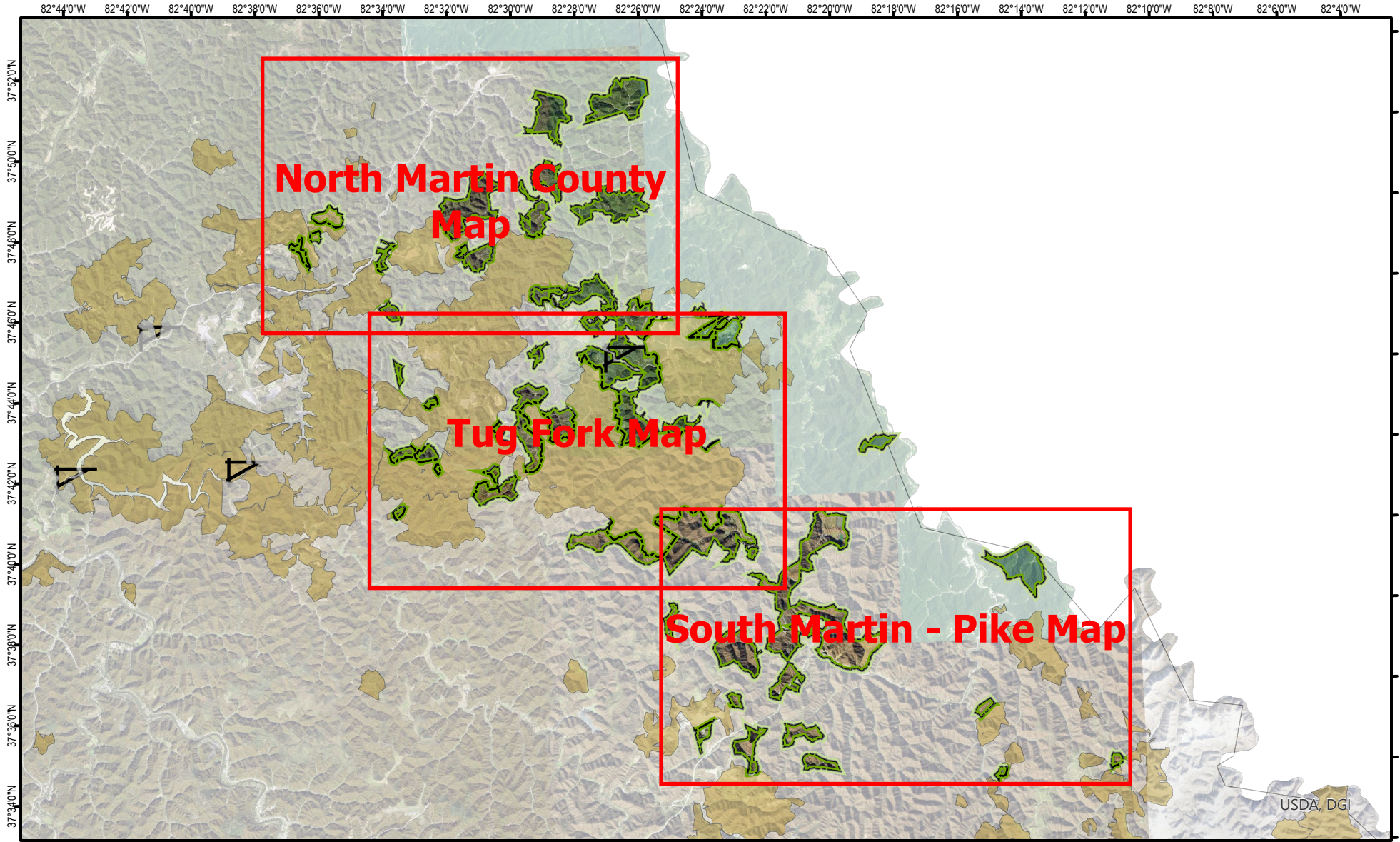


Legacy WMA

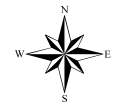


USDA, DGI

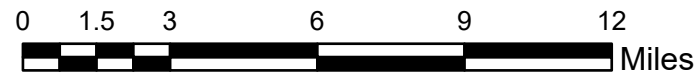
*Shading indicates topography

A map legend and additional information are provided on PDF pages that accompany this map.

Publication Date: 8/19/2024
Imagery from Farm Service Agency 2018

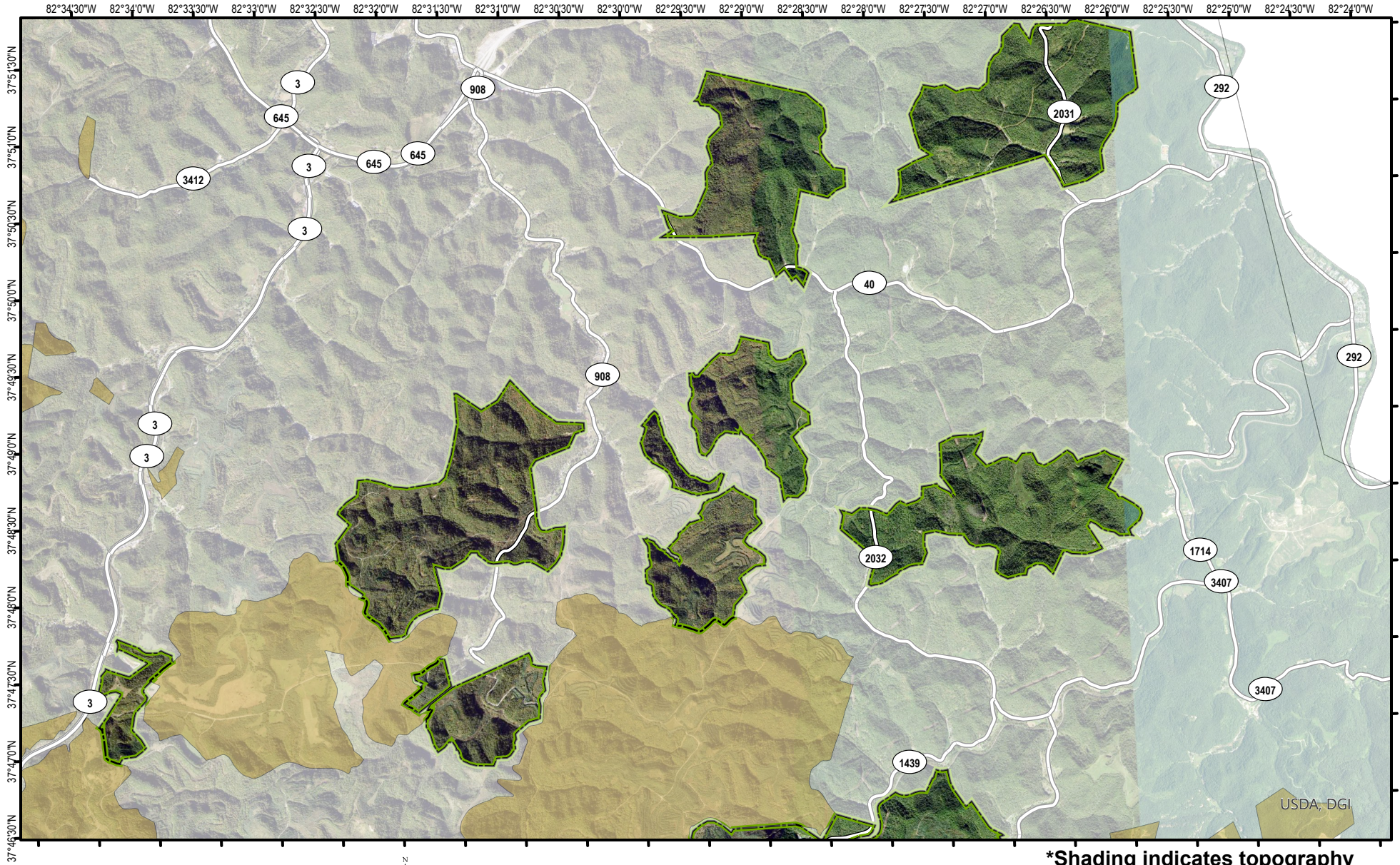


Scale 1:247,905



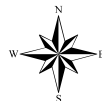
Note to Map Users
Map prepared by Kentucky Department of Fish & Wildlife Resources (KDFWR). Although KDFWR strives for accuracy, data used to create this map are from a variety of sources and dates; as such, KDFWR makes no representations regarding the accuracy or fitness for use of the information furnished herein.

North Martin County Map

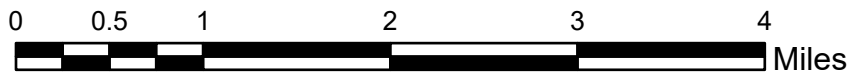


A map legend and additional information are provided on PDF pages that accompany this map.

Publication Date: 8/19/2024
Imagery from Farm Service Agency 2018



Scale: 1:64,987



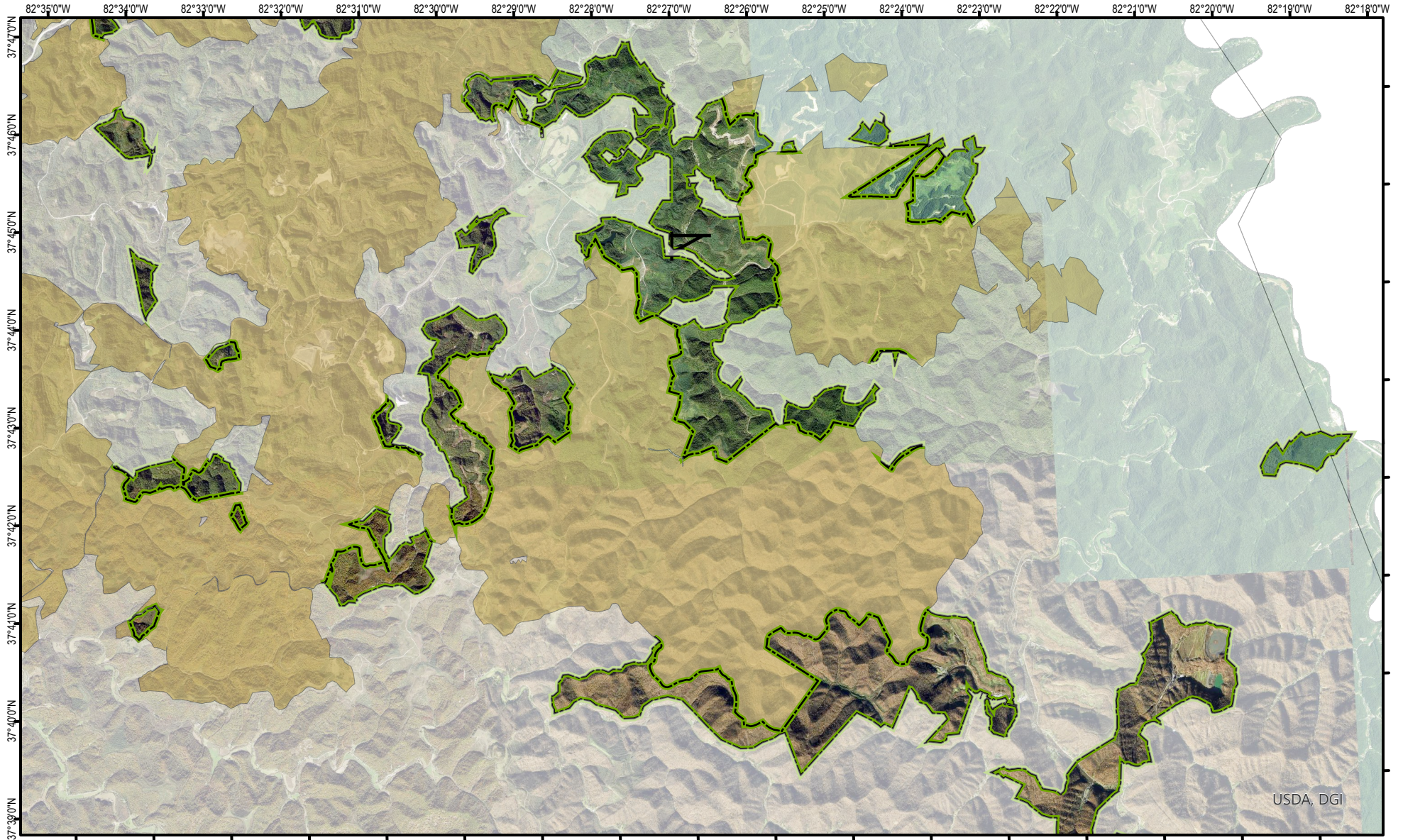
*Shading indicates topography

Note to Map Users

Map prepared by Kentucky Department of Fish & Wildlife Resources (KDFWR). Although KDFWR strives for accuracy, data used to create this map are from a variety of sources and dates; as such, KDFWR makes no representations regarding the accuracy or fitness for use of the information furnished herein.

USDA, DGI

Tug Fork Map

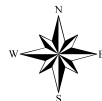


USDA, DGI

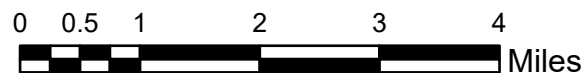
***Shading indicates topography**

A map legend and additional information are provided on PDF pages that accompany this map.

Publication Date: 8/19/2024
Imagery from Farm Service Agency 2018

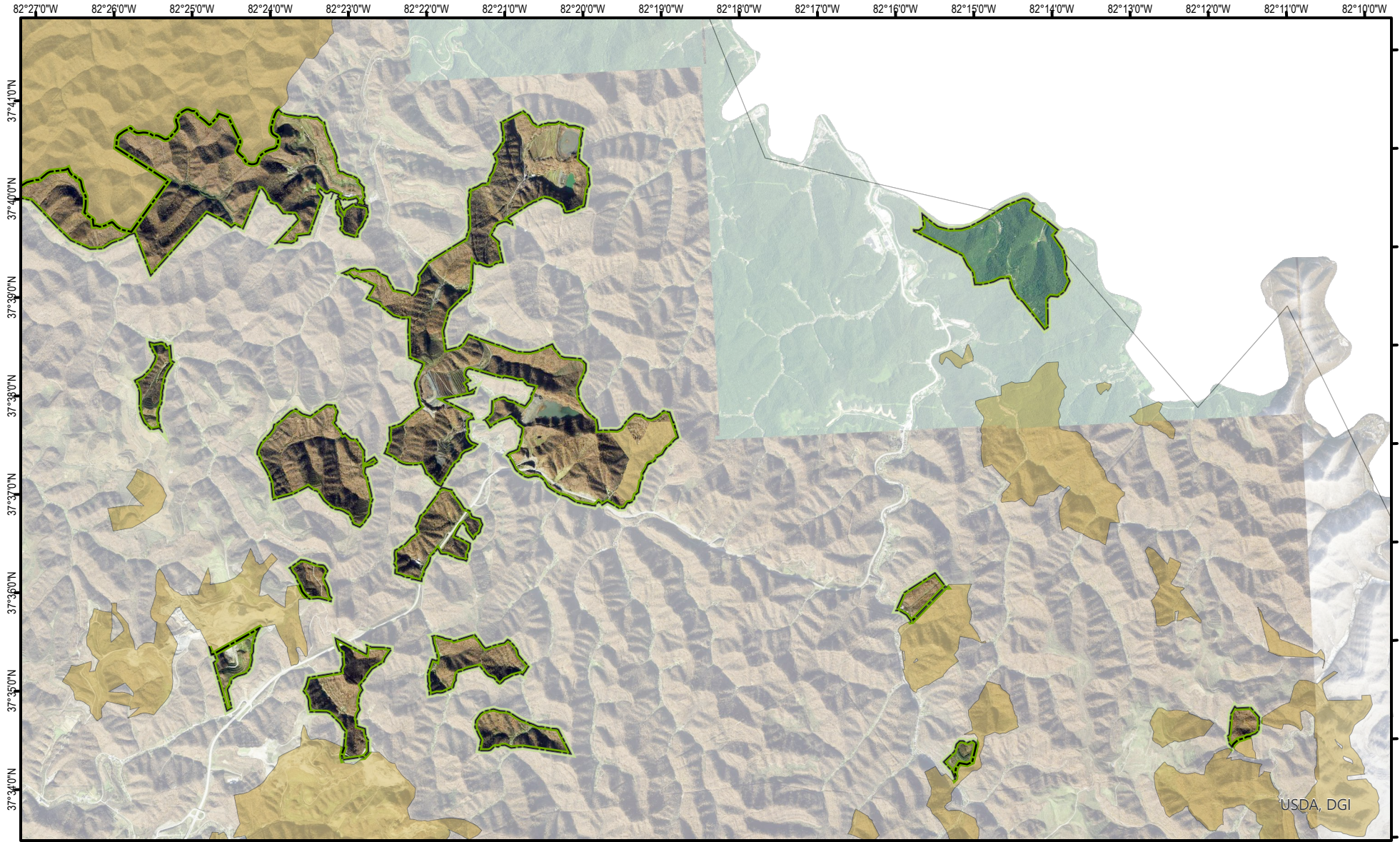


Scale 1:101,542



Note to Map Users
Map prepared by Kentucky Department of Fish & Wildlife Resources (KDFWR). Although KDFWR strives for accuracy, data used to create this map are from a variety of sources and dates; as such, KDFWR makes no representations regarding the accuracy or fitness for use of the information furnished herein.

South Martin - Pike Map

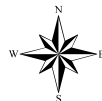


USDA, DGI

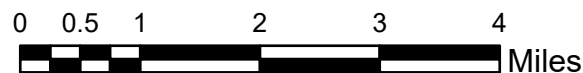
***Shading indicates topography**

A map legend and additional information are provided on PDF pages that accompany this map.

Publication Date: 8/19/2024
Imagery from Farm Service Agency 2018



Scale 1:101,542



Note to Map Users

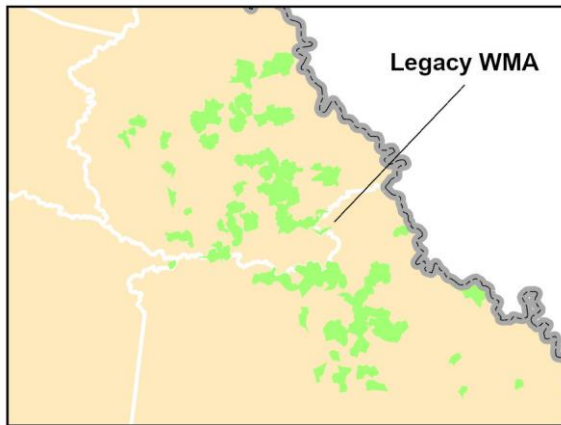
Map prepared by Kentucky Department of Fish & Wildlife Resources (KDFWR). Although KDFWR strives for accuracy, data used to create this map are from a variety of sources and dates; as such, KDFWR makes no representations regarding the accuracy or fitness for use of the information furnished herein.

Legacy WMA Information

Public Hunting Area Location



Regional Locator



WMA Overview

Location & Size: Martin and Pike Counties, 21,820 acres

Contact Scott Freidhof 606-783-8634. Contact John Hast, (502) 892-4533 for elk hunting questions.

Elevation minimum 720 feet, maximum 1650 feet.

Area Habitat mostly Deciduous Forest: open land 15%, Deciduous Forest 85%, Mixed Forest 0%, Hay / Pasture 0%.

Entrance GPS coordinates:

Directions & Description (by tract): This area is open for the hunting of all game animals, but refer to tract description for elk hunting specifics. **Damage to any trees, such as screw-in steps, baiting, and hunting over or with the aid of bait are prohibited on the properties. Active surface mining operations may still be taking place on the area. Please be careful when navigating the haul roads and stay well away from equipment and high wall mines. Semi-trucks and mining equipment always have the right-of-way!**

North Martin County: Contact: Scott Freidhof 606783-8634 This property is located in Martin County northeast of Dewey Lake WMA. Habitat on this area consists of reclaimed strip mine land comprised of grass and scrub with areas of timber dispersed over the area. This section of the property is within Elk Hunting Unit 6. A portion of the property on the southern part of this map is managed as the Tug Fork Regulated Area for elk hunting, while the remainder is open without restrictions to hunters selected for this unit. Drawn elk hunters may apply to hunt this property during the Elk Hunting Unit and Regulated Area drawing. Please refer to the elk hunting portion of our website.

Tug Fork - Martin: Contact: Scott Freidhof 606783-8634 This property is comprised of reclaimed strip mine areas of varying stage/ age of reclamation as well as large sections of timber. This property is located within Elk Hunting Unit 6 in Martin, Floyd, and Pike Counties. The majority of this tract is managed as the Tug Fork Regulated Area, but the smaller outlying tracts are open without restrictions to hunters selected for this unit. Drawn elk hunters may apply to hunt this property during the Elk Hunting Unit and Regulated Area drawing. Please refer to the elk hunting portion of our website.

South Martin - Pike: Contact: Scott Freidhof 606783-8634 This tract is located in Martin and Pike Counties, and is comprised of large sections of reclaimed surface mines bisected by timbered ridges and hollows. This portion of the property is split into Elk Hunting Units 6 and 7 with highway 119 being the dividing line, with north and west of 119 Unit 6, and south and east unit 7. Be aware that the northwest corner of this tract is managed as the Tug Fork Regulated Area, but the rest of this tract is open to elk hunters without restrictions to those selected for these units. Drawn elk hunters may apply to hunt this property during the Elk Hunting Unit and Regulated Area drawing. Please refer to the elk hunting portion of our website.

Online Resources

Public Hunting Area users must abide by the Kentucky hunting, trapping, and fishing regulations. It is incumbent on persons using Public Hunting Areas to become familiar with these regulations. Kentucky Department of Fish & Wildlife Resources provides these regulations on our Web site at fw.ky.gov or by calling 1-800-858-1549.

Wildlife Management Area Map Notes & Legend

NOTE TO MAP USERS:

For most WMA maps the landscape is depicted using a combination of elevation contours, hillshading and a green tint indicating woodland areas that is derived from satellite imagery. On WMAs that are relatively small or have a history of surface mining aerial photography is used.

WMA Map Legend

	WMA Office		WMA Boundary		Populated Place
	Information Kiosk		Aerial imagery		Kentucky Boundary
	Check station		Other Public Hunting Areas		Interstate Highway
	Mobility-impaired Hunting Blind		Area Off Limits		Kentucky Parkway
	Trailhead		No Hunting		U.S. Highway
	Horseback Trailhead		Seasonally Restricted Access		State Highway
	Parking Lot		Mobility Impaired Hunting Area		Local Road
	Picnic Area		Primitive Hunting Only		Forest Service Road
	Restrooms		Open Water		Active Railroad
	Wildlife Viewing Site		Wetland		Abandoned Railroad
	Interpretive Site		Woodland		Federal Recreation Trail
	Retriever Training Site				WMA Road
	Gate				WMA Foot Trail
	Campground				WMA Horse Trail
	Cemetery				Gas Pipeline
	Corps of Engineers Office				Powerline
	Waterfowl Blind				Rivers and Streams
	Any Boat				Dam
	Bank Access				Trout Waters
	Carrydown Only				Elevation Contour
	Fishing Pier				
	Small Boat Only				
	Shooting Range				
	State Park Office				