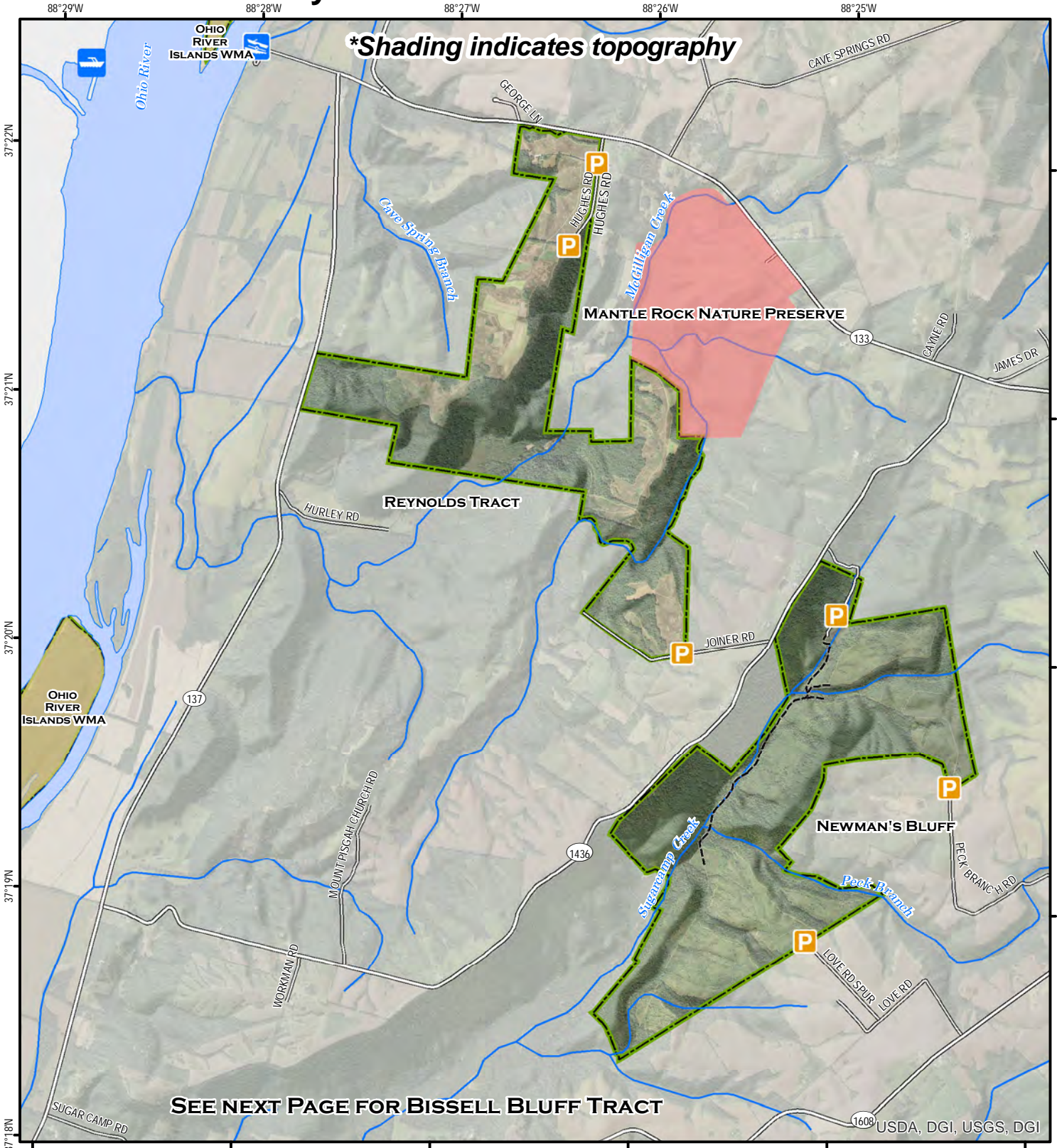
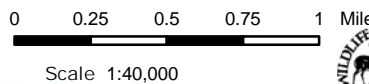


Livingston County WMA and State Natural Area Reynolds and Newmans Bluff Tracts



A map legend and additional information are provided on PDF pages that accompany this map.

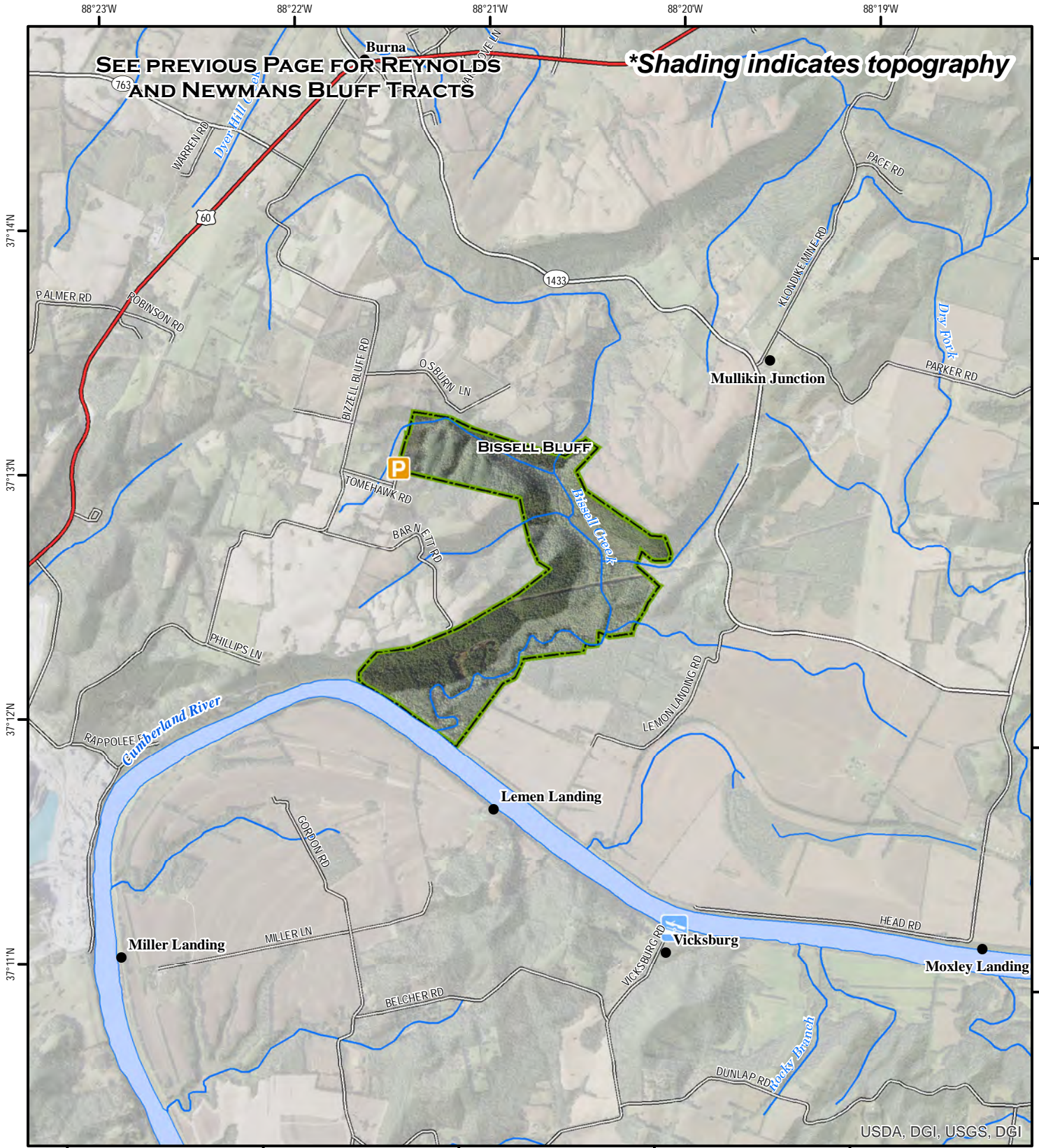
Publication Date: 7/17/2020
Imagery from Farm Service Agency 2018



Note to Map Users

Map prepared by Kentucky Department of Fish & Wildlife Resources (KDFWR). Although KDFWR strives for accuracy, data used to create this map are from a variety of sources and dates; as such, KDFWR makes no representations regarding the accuracy or fitness for use of the information furnished herein.

Livingston County WMA and State Natural Area Bissell Bluff Tract



A map legend and additional information are provided on PDF pages that accompany this map.

Publication Date: 7/17/2020
Imagery from Farm Service Agency 2018

0 0.25 0.5 0.75 1 Mile



Note to Map Users

Map prepared by Kentucky Department of Fish & Wildlife Resources (KDFWR). Although KDFWR strives for accuracy, data used to create this map are from a variety of sources and dates; as such, KDFWR makes no representations regarding the accuracy or fitness for use of the information furnished herein.

USDA, DGI, USGS, DGI

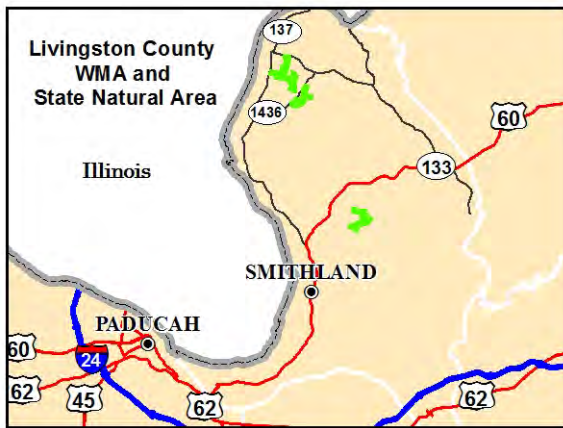
Livingston County WMA and State Natural Area Information

Public Hunting Area Location

Livingston County WMA and State Natural Area



Regional Locator



WMA Overview

Location & Size: Livingston County, 2,430 acres.

Contact: (270) 210-9774

Elevation: minimum 300 feet, maximum 667 feet.

Entrance GPS coordinates: Latitude N 37.33616, Longitude W -88.41726

Area Habitat: mostly forest: open land 3%, forest 83%, wetland 14%, open water 0%.

Directions & Description:

Consists of three tracts, the Bissell Bluff SNA (562 acres), Newman's Bluff SNA (994 acres), and Reynolds (873 acres).

* To reach the Bissell Bluff State Natural Area, from Smithland travel about 5 miles north on HWY 60 to Three Rivers Rock RD. Go south on Three Rivers Rock RD to the intersection with Bizzell Bluff RD. Turn left on Bizzell Bluff Rd by the quarry entrance. After 2.3 miles turn right on Tomahawk RD and proceed just 0.2 miles to area entrance. The Bissell Bluff tract protects a mature forest and bottomland forest along the Cumberland River. This area floods annually when the Cumberland River overflows in the spring. Terrain could be considered very rugged.

* To reach Newman's Bluff, from Smithland, go east of US 60 about 3 miles and turn left on SR 137. Go about 11 miles and turn right into Mt. Pigsah Church RD (1436). Follow about 4.5 miles, and watch for an entrance sign. Turn right on Old Good Hope Cemetery RD and proceed down the steep hill around Old Good Hope Cemetery for about ¼ mile. The Newman's Bluff tract protects habitat along the forested slope of Newman's Bluff and creek. High limestone bluffs overlook a deep heavily forested valley. This tract has a stream-fed lake near the parking area. A small waterfall is below the lake.

* Access to Reynolds tract from Joiner RD, about ½ mile on Mt. Pigsah Church RD beyond Old Good Hope Cemetery RD. Access is also available from Hughes RD, off HWY 133. Good to moderate populations of squirrel, deer, turkey and songbirds exist on the area. The area is open under statewide regulations for small game. Additional restrictions apply to turkey and deer hunting.

See the Fall Hunting and Trapping Guide for specific information concerning hunting seasons.

Management of these tracts is shared between the Livingston County Fiscal Court, the Kentucky Department of Fish and Wildlife Resources and the Kentucky State Nature Preserves Commission, portions purchased with funds from the Heritage Lands Conservation Fund.

Online Resources


Public Hunting Area users must abide by the Kentucky hunting, trapping, and fishing regulations. It is incumbent on persons using Public Hunting Areas to become familiar with these regulations. Kentucky Department of Fish & Wildlife Resources provides these regulations on our Web site at fw.ky.gov or by calling 1-800-858-1549.

Wildlife Management Area Map Notes & Legend

NOTE TO MAP USERS:

For most WMA maps the landscape is depicted using a combination of elevation contours, hillshading and a green tint indicating woodland areas that is derived from satellite imagery. On WMAs that are relatively small or have a history of surface mining aerial photography is used.

WMA Map Legend

	WMA Office		WMA Boundary		Populated Place
	Information Kiosk		Aerial photograph		Kentucky Boundary
	Check station		Other Public Hunting Areas		Interstate Highway
	Mobility-impaired Hunting Blind		Area Off Limits		Kentucky Parkway
	Trailhead		No Hunting		U.S. Highway
	Horseback Trailhead		Seasonally Restricted Access		State Highway
	Parking Lot		Mobility Impaired Hunting Area		Local Road
	Picnic Area		Primitive Hunting Only		Forest Service Road
	Restrooms		Foot Traffic Only		Active Railroad
	Wildlife Viewing Site		Open Water		Abandoned Railroad
	Interpretive Site		Wetland		Federal Recreation Trail
	Retriever Training Site		Woodland		WMA Road
	Gate				WMA Foot Trail
	Campground				WMA Horse Trail
	Cemetery				Gas Pipeline
	Corps of Engineers Office				Powerline
	Waterfowl Blind				Rivers and Streams
	Shooting Range				Dam
	Established Bank Access				Trout Waters
	Fishing Pier				Elevation Contour
	Carrydown Launch				
	Small Boat Ramp				
	Large Boat Ramp				
	State Park Office				